

# **TA239-01 - New South Wales Ambulance PCB**

The TA239-01 is an options board which fits inside a standard T2020, it allows the connection of interface equipment plus the addition of a handset to the rear of the T2000. This additional handset can be operated in parallel with the first microphone. This product requires special AED T2020 radio firmware to work with it. That is, the product contains both software and hardware.

When ordering radios for this it must be specified that the options connectors are required.

The product uses the standard T2020 programming software version 2.37 or later.

The T2020 firmware included is for the series II logic boards only.

## **UPGRADING FIRMWARE**

To upgrade the radio firmware takes three steps. Download firmware, program a valid database and test radio.

### **1. DOWNLOAD**

1. Copy all the files to a directory on the local hard drive and move to that directory.
2. Connect a normal programming lead between the PC and the radio to upgrade.
3. Type DL1 or DL2 depending on which com port the programming lead is connected to.

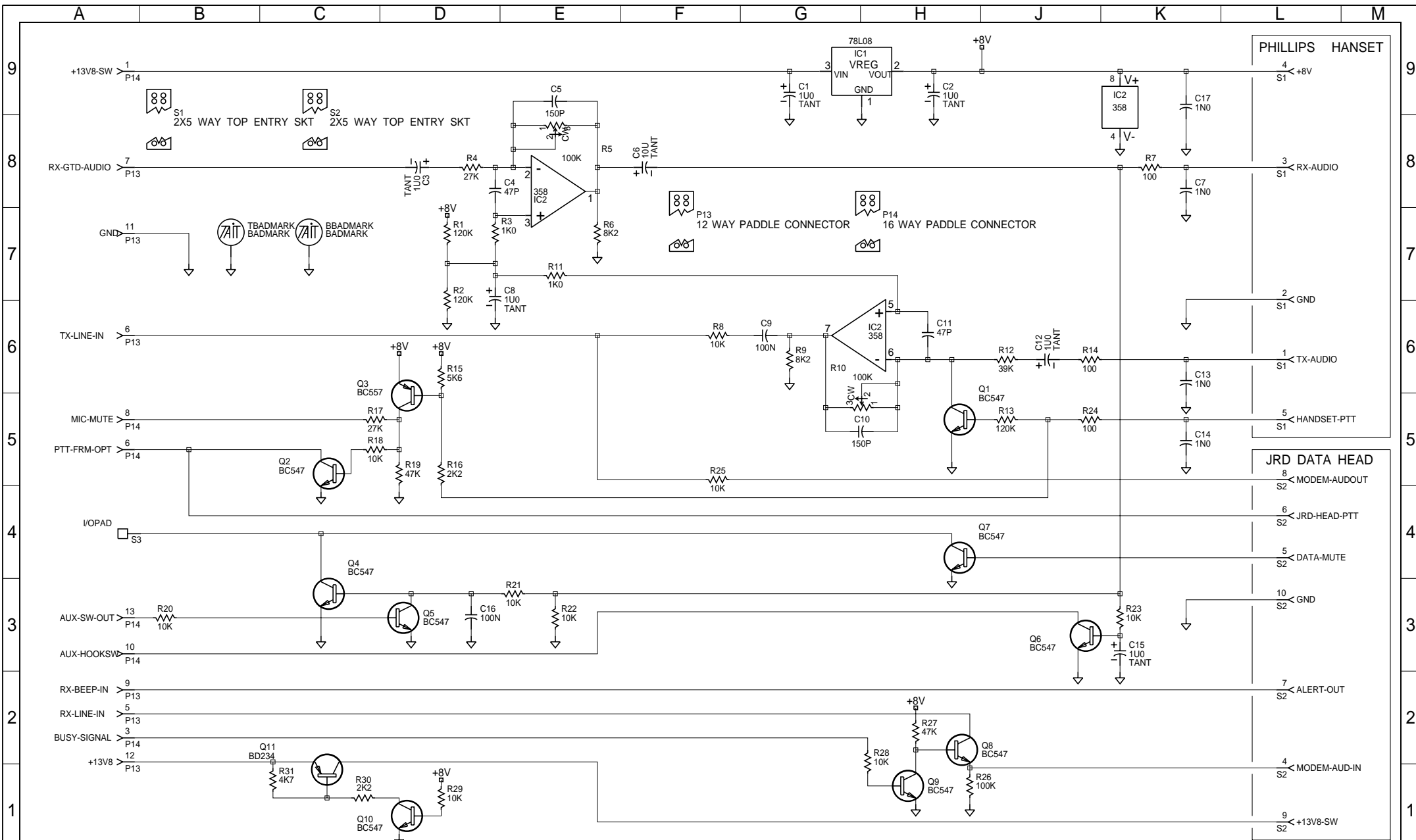
### **2. PROGRAMMING THE RADIO DATABASE.**

This radio firmware requires a special database and must be programmed with the programming software and data file supplied in this directory.

### **3. TESTING**

To test the radio power up with the PTT pressed and check that the correct software version number is displayed.

**IF ANY PROBLEMS ARE FOUND WITH THIS INFORMATION THEN PLESABE REPORT THEM BACK TO AED. ALSO PLEASE REPORT BACK IF DIFFERENT DATA FILES WOULD BE PREFERRED.**



2A	MIGRATED TO UNICAD	M.HALL				
1A	ADDED MECHANICAL PARTS TO BOM.	M.HALL	M.HALL	M.HALL	S.CRAGG	05/09/95
P2	CONNECTED R17 TO R18.	M.HALL	P.V.D.M.	D.ELDER	S.CRAGG	07/11/95
P1	PROTOTYPE	M.HALL	P.V.D.M.	D.ELDER	S.CRAGG	28/06/94
REV/ISS	AMENDMENTS	DRAWN	CHKD	D.O.	APVD	DATE

© TAIT ELECTRONICS  
 TA239-01  
 T2000 HANDSET TO DISPLAY BOARD

IPN:	ISSUE:	ID:
227-23901-02	A	2.SC. 1
PROJECT:	DESIGNER:	FILE NAME:
TA239-01	M.HALL	A023912A
FILE DATE:	NO.SHEETS:	
02/04/98	2	

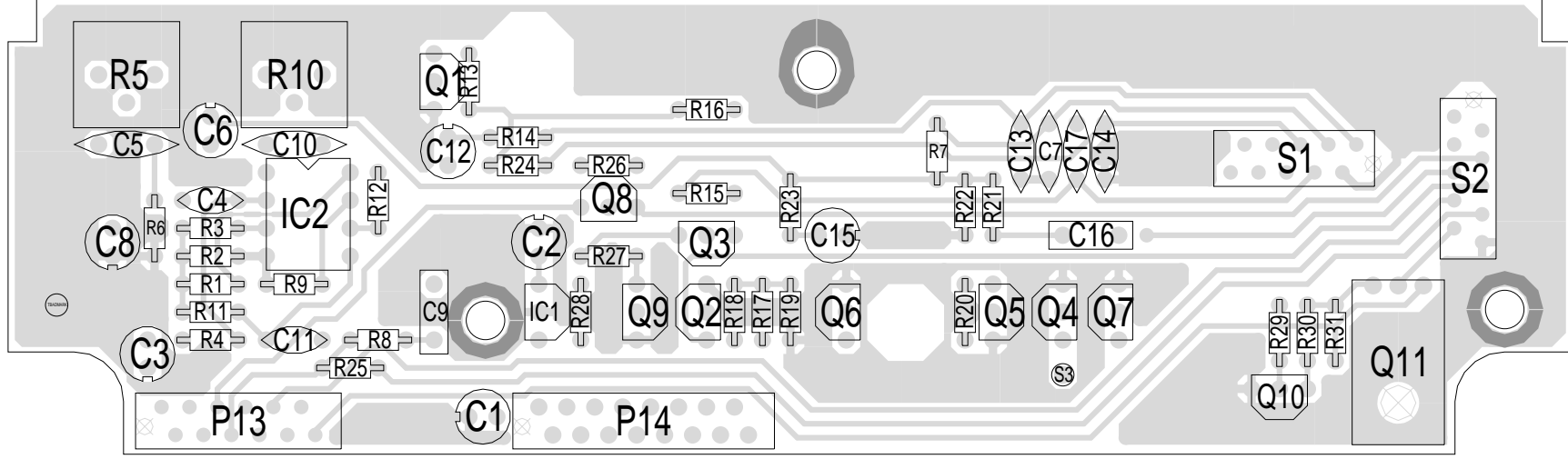
	A	B	C	D	E	F	G	H	J	K
9										
8										
7										
6										
5										
4										
3										
2										
1										
0										

QTY: 0.07	IPN: 205-00010-12	CABLE FLAT RIBBON 16 CORE GREY	(MECH PART)
QTY: 0.20	IPN: 205-00010-13	CABLE FLAT RIBBON 10 CORE GREY	(MECH PART)
QTY: 0.20	IPN: 205-00010-50	CABLE 8WAY OVAL STD TELECOM	(MECH PART)
QTY: 3.0	IPN: 240-00010-77	PLUG 10 WAY 2X5 MICROMATCH	(PURE MECH PART)
QTY: 1.0	IPN: 240-00020-10	PLUG MODULAR PHONE 8WAY OVAL CABLE	(MECH PART)
QTY: 1.0	IPN: 240-00020-51	PLUG 12 WAY 2X6 MICROMATCH	(PURE MECH PART)
QTY: 1.0	IPN: 240-00020-54	PLUG 16 WAY 2X8 MICROMATCH	(MECH PART)
QTY: 1.0	IPN: 240-04020-47	SKT 10WAY 2ROW IDC BT224 HARDING	(MECH PART)
QTY: 2.0	IPN: 316-80032-00	PACKAGE FOAM A4M2495	(MECH PART)
QTY: 1.0	IPN: 345-00040-10	SCREW M3*6MM PAN POZI ST BZ	(MECH PART)
QTY: 3.0	IPN: 349-00020-32	SCREW TAPTITE M3*8MM PAN POZI ST BZ	(MECH PART)
QTY: 1.0	IPN: 352-00010-08	NUT M3 PRESSED HEX ST BZ	(MECH PART)
QTY: 1.0	IPN: 353-00010-13	WASHER M3 SHAKEPROOF INT BZ	(MECH PART)
QTY: 1.0	IPN: 365-01482-00	LABEL BLANK 20X67MM BRIGHT ORANGE	(MECH PART)
QTY: 1.0	IPN: 369-00010-14	CABLE TIE NYLON 100*2.6MM	(MECH PART)
QTY: 1.0	IPN: 369-00010-32	CABLE TIE CLAMP M3 BLACK	(MECH PART)
QTY: 1.0	IPN: 399-00010-51	BAG PLASTIC 75*100MM	(MECH PART)
QTY: 1.0	IPN: 399-00010-88	BAG STATIC SHIELDING 152*254MM	(MECH PART)
QTY: 1.0	IPN: 410-01072-00	CARTON ACCESSORY A2A678 204*136*60MM	(MECH PART)

© TAIT ELECTRONICS  
TA239-01  
T2000 HANDSET TO DISPLAY BOARD  
IPN: 227-23901-02      ISSUE: A      ID: 2.SC. 2  
PROJECT: TA239-01      DESIGNER: M.HALL      FILE NAME: A023912A      FILE DATE: 02/04/98      NO.SHEETS: 2

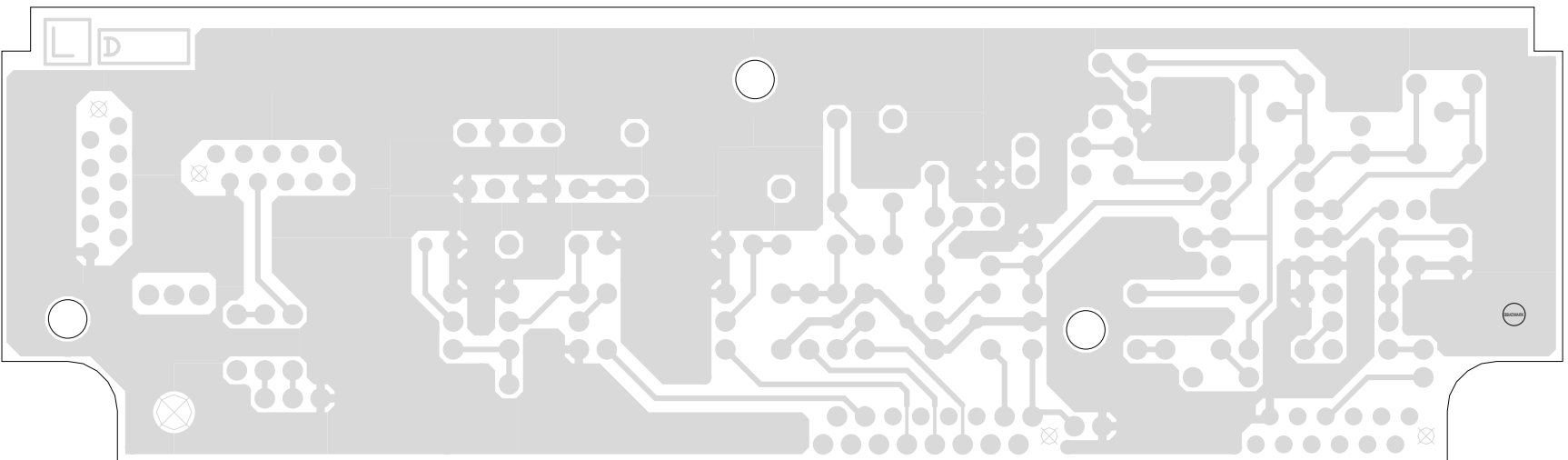
REV/ISS	AMENDMENTS			DRAWN	CHKD	D.O.	APVD	DATE
---------	------------	--	--	-------	------	------	------	------

	A	B	C	D	E	F	G	H	J	K
--	---	---	---	---	---	---	---	---	---	---



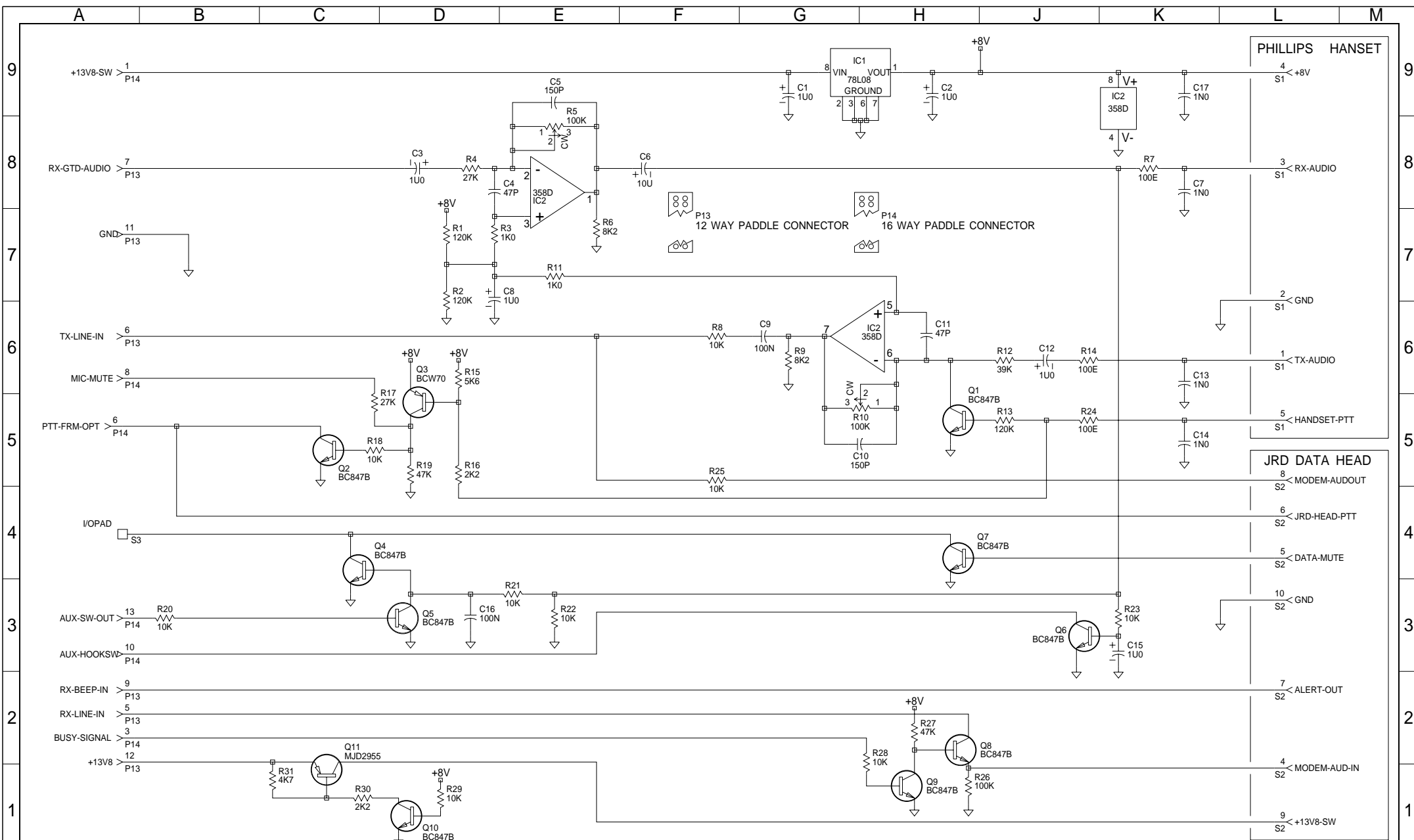
TAIT ELECTRONICS	IPN: 227-23901-02	ISS: A	ID: 1.1A	DATE: 3 Apr 1998
TA239-01 PCB LAYOUT - TOP SIDE				

Scale: 1:6:1 ; Rotation: 0 degrees



TAIT ELECTRONICS	IPN:	ISS:	ID:	DATE:
TA239-01 PCB LAYOUT - BOTTOM SIDE	227-23901-02	A	2.BA	3 Apr 1998

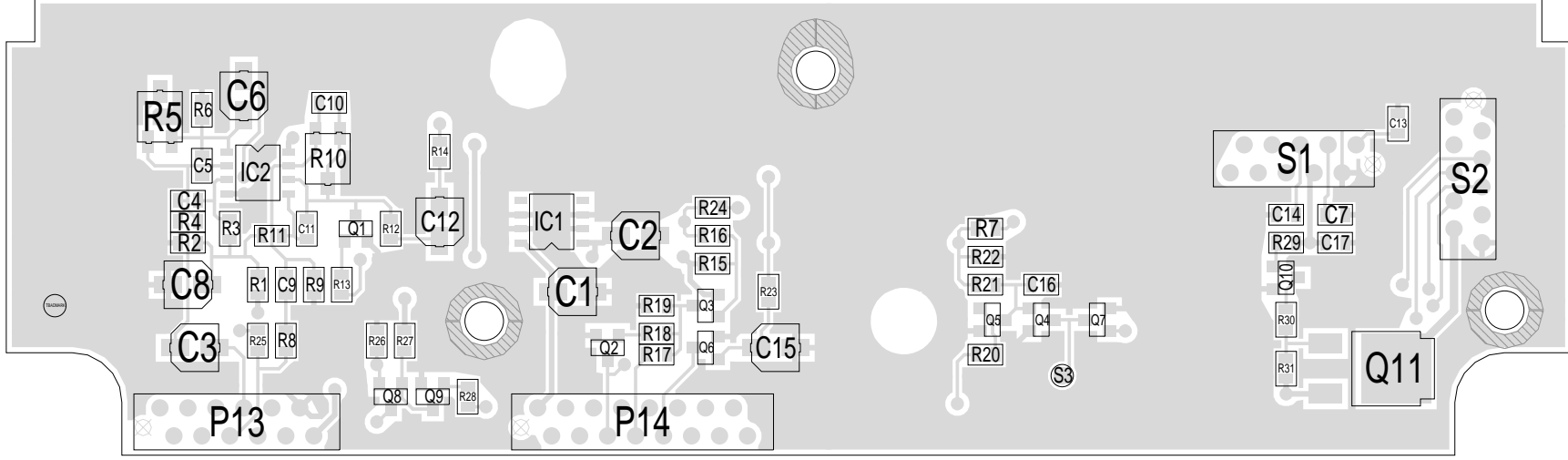
Scale: 1:6:1 : Rotation: 0 degrees



3A	ECO770363 CHANGED TO SMD	ADAM.D	M.HALL	HAN.O		22/08/01
2A	MIGRATED TO UNICAD	M.HALL	M.HALL	M.HALL	S.CRAGG	05/09/95
1A	ADDED MECHANICAL PARTS TO BOM.	M.HALL	M.HALL	M.HALL	S.CRAGG	07/11/95
P2	CONNECTED R17 TO R18.	M.HALL	P.V.D.M.	D.ELDER	S.CRAGG	28/06/94
P1	PROTOTYPE	M.HALL	P.V.D.M.	D.ELDER	S.CRAGG	28/06/94
REV/ISS	AMENDMENTS	DRAWN	CHKD	D.O.	APVD	DATE

S1 2X5 WAY TOP ENTRY SKT  
 S2 2X5 WAY TOP ENTRY SKT  
 TBMARK BADMARK

© TAIT ELECTRONICS  
 TA239-01  
 T2000 HANDSET TO DISPLAY BOARD  
 IPN: 227-23901-03 ISSU: A ID: 2.SC. 1  
 PROJECT: TAZ39-01 DESIGNER: HAN.O FILE NAME: a023913a FILE DATE: 30-Aug-01 NO.SHEETS: 2



TAIT ELECTRONICS

IPN: 227-23901-03

ISS: A

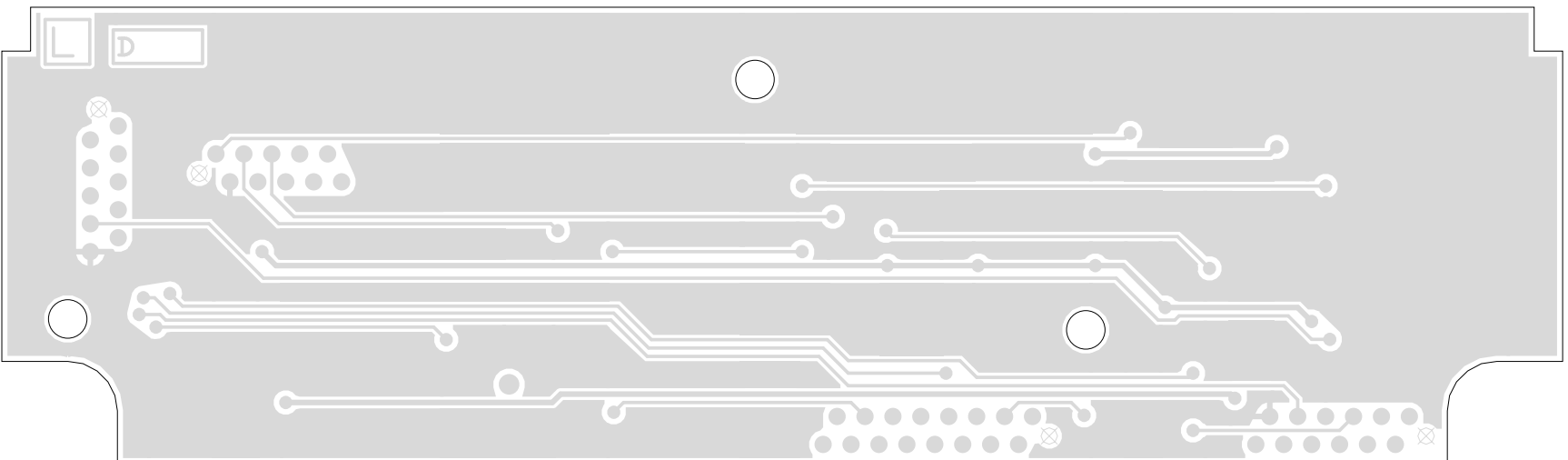
ID: 1.1TA

DATE: 30 Aug 2001

TA239-01 PCB LAYOUT - TOP SIDE

Scale: 1.6:1

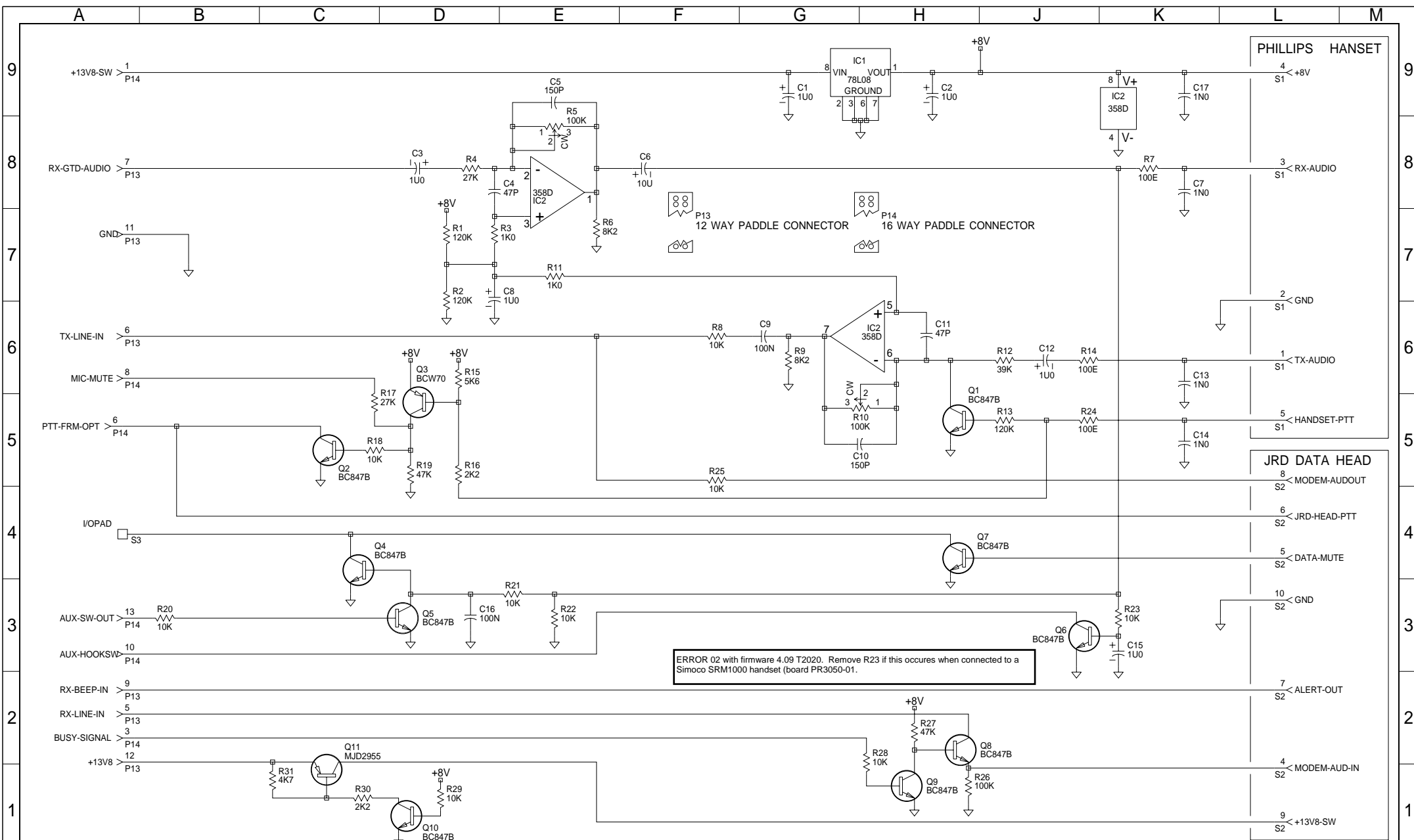
Rotation: 270 degrees



TAIT ELECTRONICS	IPN:	ISS:	ID:	DATE:
TA239-01 PCB LAYOUT - BOTTOM SIDE	227-23901-03	A	2.BA	30 Aug 2001

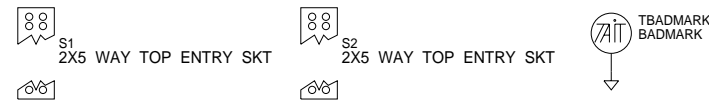
Scale: 1.6"1 : Rotation: 90 degrees





ERROR 02 with firmware 4.09 T2020. Remove R23 if this occurs when connected to a Simoco SRM1000 handset (board PR3050-01.

3A	ECO770363 CHANGED TO SMD	ADAM.D	M.HALL	HAN.O		22/08/01
2A	MIGRATED TO UNICAD	M.HALL	M.HALL			
1A	ADDED MECHANICAL PARTS TO BOM.	M.HALL	M.HALL	M.HALL	S.CRAGG	05/09/95
P2	CONNECTED R17 TO R18.	M.HALL	P.V.D.M.	D.ELDER	S.CRAGG	07/11/95
P1	PROTOTYPE	M.HALL	P.V.D.M.	D.ELDER	S.CRAGG	28/06/94
REV/ISS	AMENDMENTS	DRAWN	CHKD	D.O.	APVD	DATE



© TAIT ELECTRONICS

TA239-01  
T2000 HANDSET TO DISPLAY BOARD

IPN: 227-23901-03    ISSUE: A    ID: 2.SC. 1

PROJECT: TA239-01    DESIGNER: HAN.O    FILE NAME: a023913a    FILE DATE: 30-Aug-01    NO.SHEETS: 2