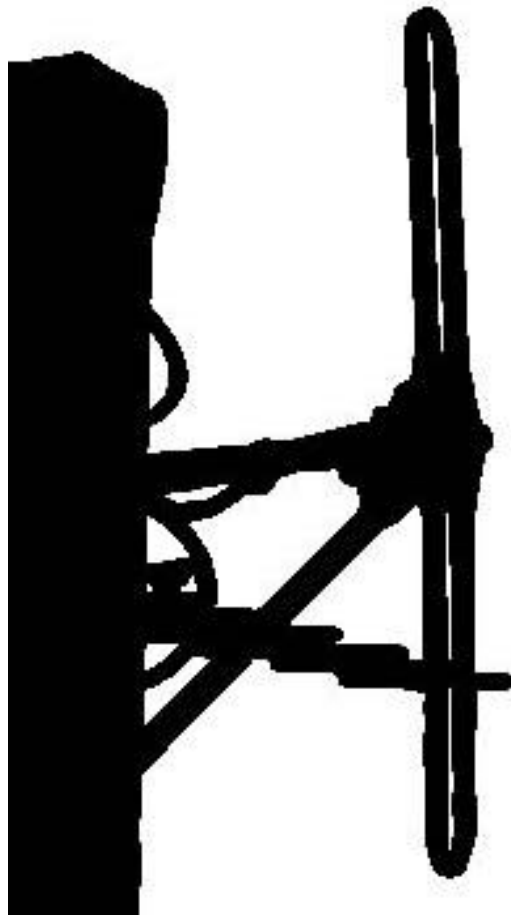


PIB 23
Oct 2002
(Issue 3)

VHF and UHF Mobile Service Bands in New Zealand



Prepared by: B E Rickerby

Approved for
Issue by: Manager Licensing Services

**THE INCLUSION OF ANY BAND OR
CHANNEL DOES NOT
NECESSARILY MEAN THAT THE
BAND OR CHANNEL IS
AVAILABLE FOR LICENSING.**

CONTENTS

Page

1. LAND MOBILE BANDS	5
1.1 VHF (< 300 MHz).....	5
1.1.1 ESA BAND (12.5 kHz Channelling).....	5
1.1.2 A BAND (12.5 kHz Channelling)	8
1.1.3 AX BAND (12.5 kHz Channelling)	14
1.1.4 ESB BAND (12.5 kHz Channelling).....	16
1.1.5 ESX BAND (12.5 kHz Channelling).....	21
1.1.6 CIVIL DEFENCE BAND (For reference only).....	23
1.1.7 CIVIL DEFENCE BAND SIMPLEX (For reference only).....	24
1.1.8 EN BAND (12.5 kHz Channelling).....	25
1.1.9 ENX BAND SIMPLEX (12.5 KHz Channelling).....	30
1.1.10 MS BAND (25 kHz Channelling)	32
1.1.11 MS BAND SIMPLEX (25 kHz Channelling).....	33
1.1.12 EE BAND (12.5 kHz Channelling)	34
1.1.13 EEX BAND (12.5 kHz Channelling).....	39
1.1.14 BUSH WINCH BANDS.....	47
1.2 UHF (300 MHz to 1000 MHz).....	49
1.2.1 TD BAND.....	49
1.2.2 TDX BAND.....	59
1.2.3 C BAND (25 kHz Channelling) (For reference only).....	60
1.2.4 CX BAND (25 kHz Channelling) (For reference only).....	63
1.2.5 CN BAND (12.5 kHz Channelling).....	64
1.2.6 CNX BAND (12.5 kHz Channelling).....	70
1.2.7 D BAND (25 kHz Channelling) (For reference only).....	72
1.2.8 DX BAND (25 kHz Channelling) (For reference only).....	75
1.2.9 DN BAND (12.5 kHz Channelling).....	77
1.2.10 DNX BAND (12.5 kHz Channelling).....	83
1.2.11 F BAND (25 kHz Channelling) (For reference only).....	86
1.2.12 FX BAND (25 kHz Channelling) (For reference only).....	93
1.2.13 FN BAND (12.5 kHz Channelling)	98
1.2.14 FNX BAND (12.5 kHz Channelling).....	112
1.2.15 TS BAND.....	122
1.2.16 TX BAND.....	128

Contents

2. AERONAUTICAL BANDS	129
2.1.1 AERONAUTICAL (R) BAND.....	129
2.1.2 AERONAUTICAL (OR) BAND	139
2.1.3 AERONAUTICAL REPEATERS.....	143
3. MARITIME MOBILE BANDS.....	144
3.1.1 MARITIME VHF BAND.....	144
4. MISCELLANEOUS BANDS	146
4.1.1 PERSONAL RADIO SERVICE BAND.....	146
4.1.2 TELECOMMAND AND TELEMETRY BAND.....	147
4.1.3 RADIO PAGING BAND.....	149
5. APPENDIX.....	150
5.1 CTCSS	150
5.1.1 Tone Groups	150
5.1.1.1 Group A.....	150
5.1.1.2 Group B.....	150
5.1.2 A/B Areas	151

1. LAND MOBILE BANDS

1.1 VHF (< 300 MHz)

1.1.1 ESA BAND (12.5 kHz Channelling)

Band	Structure	EIRP	Emission	Channel Spacing	Remarks
'ESA'		Repeater 14 dBW Mobile 14 dBW	FM	12.5 kHz	

<u>CHANNEL</u>	<u>BASE TX FREQ</u>	<u>MOBILE TX FREQ</u>
ESA 1	75.22500	78.10625
ESA 2	75.23750	78.11875
ESA 3	75.25000	78.13125
ESA 4	75.26250	78.14375
ESA 5	75.27500	78.15625
ESA 6	75.28750	78.16875
ESA 7	75.30000	78.18125
ESA 8	75.31250	78.19375
ESA 9	75.32500	78.20625
ESA 10	75.33750	78.21875
ESA 11	75.35000	78.23125
ESA 12	75.36250	78.24375
ESA 13	75.37500	78.25625
ESA 14	75.38750	78.26875
ESA 15	75.40000	78.28125
ESA 16	75.41250	78.29375
ESA 17	75.42500	78.30625
ESA 18	75.43750	78.31875
ESA 19	75.45000	78.33125
ESA 20	75.46250	78.34375
ESA 21	75.47500	78.35625
ESA 22	75.48750	78.36875
ESA 23	75.50000	78.38125
ESA 24	75.51250	78.39375
ESA 25	75.52500	78.40625
ESA 26	75.53750	78.41875
ESA 27	75.55000	78.43125
ESA 28	75.56250	78.44375
ESA 29	75.57500	78.45625
ESA 30	75.58750	78.46875

<u>CHANNEL</u>	<u>BASE TX FREQ</u>	<u>MOBILE TX FREQ</u>
ESA 31	75.60000	78.48125
ESA 32	75.61250	78.49375
ESA 33	75.62500	78.50625
ESA 34	75.63750	78.51875
ESA 35	75.65000	78.53125
ESA 36	75.66250	78.54375
ESA 37	75.67500	78.55625
ESA 38	75.68750	78.56875
ESA 39	75.70000	78.58125
ESA 40	75.71250	78.59375
ESA 41	75.72500	78.60625
ESA 42	75.73750	78.61875
ESA 43	75.75000	78.63125
ESA 44	75.76250	78.64375
ESA 45	75.77500	78.65625
ESA 46	75.78750	78.66875
ESA 47	75.80000	78.68125
ESA 48	75.81250	78.69375
ESA 49	75.82500	78.70625
ESA 50	75.83750	78.71875
ESA 51	75.85000	78.73125
ESA 52	75.86250	78.74375
ESA 53	75.87500	78.75625
ESA 54	75.88750	78.76875
ESA 55	75.90000	78.78125
ESA 56	75.91250	78.79375
ESA 57	75.92500	78.80625
ESA 58	75.93750	78.81875
ESA 59	75.95000	78.83125
ESA 60	75.96250	78.84375
ESA 61	75.97500	78.85625
ESA 62	75.98750	78.86875
ESA 63	76.00000	78.88125
ESA 64	76.01250	78.89375
ESA 65	76.02500	78.90625
ESA 66	76.03750	78.91875
ESA 67	76.05000	78.93125
ESA 68	76.06250	78.94375
ESA 69	76.07500	78.95625
ESA 70	76.08750	78.96875
ESA 71	76.10000	78.98125
ESA 72	76.11250	78.99375
ESA 73	76.12500	79.00625
ESA 74	76.13750	79.01875
ESA 75	76.15000	79.03125
ESA 76	76.16250	79.04375
ESA 77	76.17500	79.05625
ESA 78	76.18750	79.06875
ESA 79	76.20000	79.08125
ESA 80	76.21250	79.09375
ESA 81	76.22500	79.10625
ESA 82	76.23750	79.11875

<u>CHANNEL</u>	<u>BASE TX FREQ</u>	<u>MOBILE TX FREQ</u>
ESA 83	76.25000	79.13125
ESA 84	76.26250	79.14375
ESA 85	76.27500	79.15625
ESA 86	76.28750	79.16875

1.1.2 A BAND (12.5 kHz Channelling)

Band	Structure	EIRP	Emission	Channel Spacing	Remarks
'A'		81.00000 MHz	Repeater 14 dBW	FM AM	12.5 kHz 12.5 kHz
	A1		Mobile 14 dBW		
	Base Tx				
	A242	84.02500 MHz			
	AX243	84.03750 MHz			
	Simplex				
	AX318	84.97500 MHz			
	A1	84.98125 MHz			
	Mobile Tx				
	A242	87.99375 MHz			

<u>CHANNEL</u>	<u>BASE TX FREQ</u>	<u>MOBILE TX FREQ</u>
A 1	81.01250	84.98125
A 2	81.02500	84.99375
A 3	81.03750	85.00625
A 4	81.05000	85.01875
A 5	81.06250	85.03125
A 6	81.07500	85.04375
A 7	81.08750	85.05625
A 8	81.10000	85.06875
A 9	81.11250	85.08125
A 10	81.12500	85.09375
A 11	81.13750	85.10625
A 12	81.15000	85.11875
A 13	81.16250	85.13125
A 14	81.17500	85.14375
A 15	81.18750	85.15625
A 16	81.20000	85.16875
A 17	81.21250	85.18125
A 18	81.22500	85.19375
A 19	81.23750	85.20625
A 20	81.25000	85.21875
A 21	81.26250	85.23125
A 22	81.27500	85.24375
A 23	81.28750	85.25625
A 24	81.30000	85.26875
A 25	81.31250	85.28125
A 26	81.32500	85.29375
A 27	81.33750	85.30625
A 28	81.35000	85.31875
A 29	81.36250	85.33125
A 30	81.37500	85.34375
A 31	81.38750	85.35625
A 32	81.40000	85.36875
A 33	81.41250	85.38125
A 34	81.42500	85.39375

<u>CHANNEL</u>	<u>BASE TX FREQ</u>	<u>MOBILE TX FREQ</u>
A 35	81.43750	85.40625
A 36	81.45000	85.41875
A 37	81.46250	85.43125
A 38	81.47500	85.44375
A 39	81.48750	85.45625
A 40	81.50000	85.46875
A 41	81.51250	85.48125
A 42	81.52500	85.49375
A 43	81.53750	85.50625
A 44	81.55000	85.51875
A 45	81.56250	85.53125
A 46	81.57500	85.54375
A 47	81.58750	85.55625
A 48	81.60000	85.56875
A 49	81.61250	85.58125
A 50	81.62500	85.59375
A 51	81.63750	85.60625
A 52	81.65000	85.61875
A 53	81.66250	85.63125
A 54	81.67500	85.64375
A 55	81.68750	85.65625
A 56	81.70000	85.66875
A 57	81.71250	85.68125
A 58	81.72500	85.69375
A 59	81.73750	85.70625
A 60	81.75000	85.71875
A 61	81.76250	85.73125
A 62	81.77500	85.74375
A 63	81.78750	85.75625
A 64	81.80000	85.76875
A 65	81.81250	85.78125
A 66	81.82500	85.79375
A 67	81.83750	85.80625
A 68	81.85000	85.81875
A 69	81.86250	85.83125
A 70	81.87500	85.84375
A 71	81.88750	85.85625
A 72	81.90000	85.86875
A 73	81.91250	85.88125
A 74	81.92500	85.89375
A 75	81.93750	85.90625
A 76	81.95000	85.91875
A 77	81.96250	85.93125
A 78	81.97500	85.94375
A 79	81.98750	85.95625
A 80	82.00000	85.96875
A 81	82.01250	85.98125
A 82	82.02500	85.99375
A 83	82.03750	86.00625
A 84	82.05000	86.01875
A 85	82.06250	86.03125

<u>CHANNEL</u>	<u>BASE TX FREQ</u>	<u>MOBILE TX FREQ</u>
A 86	82.07500	86.04375
A 87	82.08750	86.05625
A 88	82.10000	86.06875
A 89	82.11250	86.08125
A 90	82.12500	86.09375
A 91	82.13750	86.10625
A 92	82.15000	86.11875
A 93	82.16250	86.13125
A 94	82.17500	86.14375
A 95	82.18750	86.15625
A 96	82.20000	86.16875
A 97	82.21250	86.18125
A 98	82.22500	86.19375
A 99	82.23750	86.20625
A 100	82.25000	86.21875
A 101	82.26250	86.23125
A 102	82.27500	86.24375
A 103	82.28750	86.25625
A 104	82.30000	86.26875
A 105	82.31250	86.28125
A 106	82.32500	86.29375
A 107	82.33750	86.30625
A 108	82.35000	86.31875
A 109	82.36250	86.33125
A 110	82.37500	86.34375
A 111	82.38750	86.35625
A 112	82.40000	86.36875
A 113	82.41250	86.38125
A 114	82.42500	86.39375
A 115	82.43750	86.40625
A 116	82.45000	86.41875
A 117	82.46250	86.43125
A 118	82.47500	86.44375
A 119	82.48750	86.45625
A 120	82.50000	86.46875
A 121	82.51250	86.48125
A 122	82.52500	86.49375
A 123	82.53750	86.50625
A 124	82.55000	86.51875
A 125	82.56250	86.53125
A 126	82.57500	86.54375
A 127	82.58750	86.55625
A 128	82.60000	86.56875
A 129	82.61250	86.58125
A 130	82.62500	86.59375
A 131	82.63750	86.60625
A 132	82.65000	86.61875
A 133	82.66250	86.63125
A 134	82.67500	86.64375
A 135	82.68750	86.65625
A 136	82.70000	86.66875

<u>CHANNEL</u>	<u>BASE TX FREQ</u>	<u>MOBILE TX FREQ</u>
A 137	82.71250	86.68125
A 138	82.72500	86.69375
A 139	82.73750	86.70625
A 140	82.75000	86.71875
A 141	82.76250	86.73125
A 142	82.77500	86.74375
A 143	82.78750	86.75625
A 144	82.80000	86.76875
A 145	82.81250	86.78125
A 146	82.82500	86.79375
A 147	82.83750	86.80625
A 148	82.85000	86.81875
A 149	82.86250	86.83125
A 150	82.87500	86.84375
A 151	82.88750	86.85625
A 152	82.90000	86.86875
A 153	82.91250	86.88125
A 154	82.92500	86.89375
A 155	82.93750	86.90625
A 156	82.95000	86.91875
A 157	82.96250	86.93125
A 158	82.97500	86.94375
A 159	82.98750	86.95625
A 160	83.00000	86.96875
A 161	83.01250	86.98125
A 162	83.02500	86.99375
A 163	83.03750	87.00625
A 164	83.05000	87.01875
A 165	83.06250	87.03125
A 166	83.07500	87.04375
A 167	83.08750	87.05625
A 168	83.10000	87.06875
A 169	83.11250	87.08125
A 170	83.12500	87.09375
A 171	83.13750	87.10625
A 172	83.15000	87.11875
A 173	83.16250	87.13125
A 174	83.17500	87.14375
A 175	83.18750	87.15625
A 176	83.20000	87.16875
A 177	83.21250	87.18125
A 178	83.22500	87.19375
A 179	83.23750	87.20625
A 180	83.25000	87.21875
A 181	83.26250	87.23125
A 182	83.27500	87.24375
A 183	83.28750	87.25625
A 184	83.30000	87.26875
A 185	83.31250	87.28125
A 186	83.32500	87.29375
A 187	83.33750	87.30625

<u>CHANNEL</u>	<u>BASE TX FREQ</u>	<u>MOBILE TX FREQ</u>
A 188	83.35000	87.31875
A 189	83.36250	87.33125
A 190	83.37500	87.34375
A 191	83.38750	87.35625
A 192	83.40000	87.36875
A 193	83.41250	87.38125
A 194	83.42500	87.39375
A 195	83.43750	87.40625
A 196	83.45000	87.41875
A 197	83.46250	87.43125
A 198	83.47500	87.44375
A 199	83.48750	87.45625
A 200	83.50000	87.46875
A 201	83.51250	87.48125
A 202	83.52500	87.49375
A 203	83.53750	87.50625
A 204	83.55000	87.51875
A 205	83.56250	87.53125
A 206	83.57500	87.54375
A 207	83.58750	87.55625
A 208	83.60000	87.56875
A 209	83.61250	87.58125
A 210	83.62500	87.59375
A 211	83.63750	87.60625
A 212	83.65000	87.61875
A 213	83.66250	87.63125
A 214	83.67500	87.64375
A 215	83.68750	87.65625
A 216	83.70000	87.66875
A 217	83.71250	87.68125
A 218	83.72500	87.69375
A 219	83.73750	87.70625
A 220	83.75000	87.71875
A 221	83.76250	87.73125
A 222	83.77500	87.74375
A 223	83.78750	87.75625
A 224	83.80000	87.76875
A 225	83.81250	87.78125
A 226	83.82500	87.79375
A 227	83.83750	87.80625
A 228	83.85000	87.81875
A 229	83.86250	87.83125
A 230	83.87500	87.84375
A 231	83.88750	87.85625
A 232	83.90000	87.86875
A 233	83.91250	87.88125
A 234	83.92500	87.89375
A 235	83.93750	87.90625
A 236	83.95000	87.91875
A 237	83.96250	87.93125
A 238	83.97500	87.94375

<u>CHANNEL</u>	<u>BASE TX FREQ</u>	<u>MOBILE TX FREQ</u>
A 239	83.98750	87.95625
A 240	84.00000	87.96875
A 241	84.01250	87.98125
A 242	84.02500	87.99375

1.1.3 AX BAND (12.5 kHz Channelling)

<u>CHANNEL</u>	<u>FREQUENCY</u>
AX 243	84.03750
AX 244	84.05000
AX 245	84.06250
AX 246	84.07500
AX 247	84.08750
AX 248	84.10000
AX 249	84.11250
AX 250	84.12500
AX 251	84.13750
AX 252	84.15000
AX 253	84.16250
AX 254	84.17500
AX 255	84.18750
AX 256	84.20000
AX 257	84.21250
AX 258	84.22500
AX 259	84.23750
AX 260	84.25000
AX 261	84.26250
AX 262	84.27500
AX 263	84.28750
AX 264	84.30000
AX 265	84.31250
AX 266	84.32500
AX 267	84.33750
AX 268	84.35000
AX 269	84.36250
AX 270	84.37500
AX 271	84.38750
AX 272	84.40000
AX 273	84.41250
AX 274	84.42500
AX 275	84.43750
AX 276	84.45000
AX 277	84.46250
AX 278	84.47500
AX 279	84.48750
AX 280	84.50000
AX 281	84.51250
AX 282	84.52500
AX 283	84.53750
AX 284	84.55000
AX 285	84.56250
AX 286	84.57500
AX 287	84.58750
AX 288	84.60000
AX 289	84.61250
AX 290	84.62500
AX 291	84.63750
AX 292	84.65000

<u>CHANNEL</u>	<u>FREQUENCY</u>
AX 293	84.66250
AX 294	84.67500
AX 295	84.68750
AX 296	84.70000
AX 297	84.71250
AX 298	84.72500
AX 299	84.73750
AX 300	84.75000
AX 301	84.76250
AX 302	84.77500
AX 303	84.78750
AX 304	84.80000
AX 305	84.81250
AX 306	84.82500
AX 307	84.83750
AX 308	84.85000
AX 309	84.86250
AX 310	84.87500
AX 311	84.88750
AX 312	84.90000
AX 313	84.91250
AX 314	84.92500
AX 315	84.93750
AX 316	84.95000
AX 317	84.96250
AX 318	84.97500

1.1.4 ESB BAND (12.5 kHz Channelling)

Band	Structure	EIRP	Emission	Channel Spacing	Remarks
'ESB'		Repeater 14 dBW Mobile 14 dBW	FM	12.5 kHz	
	ESB1 Mobile Tx	138.000 MHz			
	ESB200	140.500 MHz			
	ESX1 Simplex	140.5125 MHz			
	ESX40	141.000 MHz			
	ESB1 Base Tx	141.0125 MHz			
	ESB200	143.500 MHz			
	ESX41 Simplex	143.5125 MHz			
	ESX79	144.000 MHz			

<u>CHANNEL</u>	<u>BASE TX FREQ</u>	<u>MOBILE TX FREQ</u>
ESB 1	141.01250	138.01250
ESB 2	141.02500	138.02500
ESB 3	141.03750	138.03750
ESB 4	141.05000	138.05000
ESB 5	141.06250	138.06250
ESB 6	141.07500	138.07500
ESB 7	141.08750	138.08750
ESB 8	141.10000	138.10000
ESB 9	141.11250	138.11250
ESB 10	141.12500	138.12500
ESB 11	141.13750	138.13750
ESB 12	141.15000	138.15000
ESB 13	141.16250	138.16250
ESB 14	141.17500	138.17500
ESB 15	141.18750	138.18750
ESB 16	141.20000	138.20000
ESB 17	141.21250	138.21250
ESB 18	141.22500	138.22500
ESB 19	141.23750	138.23750
ESB 20	141.25000	138.25000
ESB 21	141.26250	138.26250
ESB 22	141.27500	138.27500
ESB 23	141.28750	138.28750
ESB 24	141.30000	138.30000
ESB 25	141.31250	138.31250
ESB 26	141.32500	138.32500
ESB 27	141.33750	138.33750
ESB 28	141.35000	138.35000
ESB 29	141.36250	138.36250
ESB 30	141.37500	138.37500

<u>CHANNEL</u>	<u>BASE TX FREQ</u>	<u>MOBILE TX FREQ</u>
ESB 31	141.38750	138.38750
ESB 32	141.40000	138.40000
ESB 33	141.41250	138.41250
ESB 34	141.42500	138.42500
ESB 35	141.43750	138.43750
ESB 36	141.45000	138.45000
ESB 37	141.46250	138.46250
ESB 38	141.47500	138.47500
ESB 39	141.48750	138.48750
ESB 40	141.50000	138.50000
ESB 41	141.51250	138.51250
ESB 42	141.52500	138.52500
ESB 43	141.53750	138.53750
ESB 44	141.55000	138.55000
ESB 45	141.56250	138.56250
ESB 46	141.57500	138.57500
ESB 47	141.58750	138.58750
ESB 48	141.60000	138.60000
ESB 49	141.61250	138.61250
ESB 50	141.62500	138.62500
ESB 51	141.63750	138.63750
ESB 52	141.65000	138.65000
ESB 53	141.66250	138.66250
ESB 54	141.67500	138.67500
ESB 55	141.68750	138.68750
ESB 56	141.70000	138.70000
ESB 57	141.71250	138.71250
ESB 58	141.72500	138.72500
ESB 59	141.73750	138.73750
ESB 60	141.75000	138.75000
ESB 61	141.76250	138.76250
ESB 62	141.77500	138.77500
ESB 63	141.78750	138.78750
ESB 64	141.80000	138.80000
ESB 65	141.81250	138.81250
ESB 66	141.82500	138.82500
ESB 67	141.83750	138.83750
ESB 68	141.85000	138.85000
ESB 69	141.86250	138.86250
ESB 70	141.87500	138.87500
ESB 71	141.88750	138.88750
ESB 72	141.90000	138.90000
ESB 73	141.91250	138.91250
ESB 74	141.92500	138.92500
ESB 75	141.93750	138.93750
ESB 76	141.95000	138.95000
ESB 77	141.96250	138.96250
ESB 78	141.97500	138.97500
ESB 79	141.98750	138.98750
ESB 80	142.00000	139.00000
ESB 81	142.01250	139.01250
ESB 82	142.02500	139.02500

<u>CHANNEL</u>	<u>BASE TX FREQ</u>	<u>MOBILE TX FREQ</u>
ESB 83	142.03750	139.03750
ESB 84	142.05000	139.05000
ESB 85	142.06250	139.06250
ESB 86	142.07500	139.07500
ESB 87	142.08750	139.08750
ESB 88	142.10000	139.10000
ESB 89	142.11250	139.11250
ESB 90	142.12500	139.12500
ESB 91	142.13750	139.13750
ESB 92	142.15000	139.15000
ESB 93	142.16250	139.16250
ESB 94	142.17500	139.17500
ESB 95	142.18750	139.18750
ESB 96	142.20000	139.20000
ESB 97	142.21250	139.21250
ESB 98	142.22500	139.22500
ESB 99	142.23750	139.23750
ESB 100	142.25000	139.25000
ESB 101	142.26250	139.26250
ESB 102	142.27500	139.27500
ESB 103	142.28750	139.28750
ESB 104	142.30000	139.30000
ESB 105	142.31250	139.31250
ESB 106	142.32500	139.32500
ESB 107	142.33750	139.33750
ESB 108	142.35000	139.35000
ESB 109	142.36250	139.36250
ESB 110	142.37500	139.37500
ESB 111	142.38750	139.38750
ESB 112	142.40000	139.40000
ESB 113	142.41250	139.41250
ESB 114	142.42500	139.42500
ESB 115	142.43750	139.43750
ESB 116	142.45000	139.45000
ESB 117	142.46250	139.46250
ESB 118	142.47500	139.47500
ESB 119	142.48750	139.48750
ESB 120	142.50000	139.50000
ESB 121	142.51250	139.51250
ESB 122	142.52500	139.52500
ESB 123	142.53750	139.53750
ESB 124	142.55000	139.55000
ESB 125	142.56250	139.56250
ESB 126	142.57500	139.57500
ESB 127	142.58750	139.58750
ESB 128	142.60000	139.60000
ESB 129	142.61250	139.61250
ESB 130	142.62500	139.62500
ESB 131	142.63750	139.63750
ESB 132	142.65000	139.65000
ESB 133	142.66250	139.66250
ESB 134	142.67500	139.67500

<u>CHANNEL</u>	<u>BASE TX FREQ</u>	<u>MOBILE TX FREQ</u>
ESB 135	142.68750	139.68750
ESB 136	142.70000	139.70000
ESB 137	142.71250	139.71250
ESB 138	142.72500	139.72500
ESB 139	142.73750	139.73750
ESB 140	142.75000	139.75000
ESB 141	142.76250	139.76250
ESB 142	142.77500	139.77500
ESB 143	142.78750	139.78750
ESB 144	142.80000	139.80000
ESB 145	142.81250	139.81250
ESB 146	142.82500	139.82500
ESB 147	142.83750	139.83750
ESB 148	142.85000	139.85000
ESB 149	142.86250	139.86250
ESB 150	142.87500	139.87500
ESB 151	142.88750	139.88750
ESB 152	142.90000	139.90000
ESB 153	142.91250	139.91250
ESB 154	142.92500	139.92500
ESB 155	142.93750	139.93750
ESB 156	142.95000	139.95000
ESB 157	142.96250	139.96250
ESB 158	142.97500	139.97500
ESB 159	142.98750	139.98750
ESB 160	143.00000	140.00000
ESB 161	143.01250	140.01250
ESB 162	143.02500	140.02500
ESB 163	143.03750	140.03750
ESB 164	143.05000	140.05000
ESB 165	143.06250	140.06250
ESB 166	143.07500	140.07500
ESB 167	143.08750	140.08750
ESB 168	143.10000	140.10000
ESB 169	143.11250	140.11250
ESB 170	143.12500	140.12500
ESB 171	143.13750	140.13750
ESB 172	143.15000	140.15000
ESB 173	143.16250	140.16250
ESB 174	143.17500	140.17500
ESB 175	143.18750	140.18750
ESB 176	143.20000	140.20000
ESB 177	143.21250	140.21250
ESB 178	143.22500	140.22500
ESB 179	143.23750	140.23750
ESB 180	143.25000	140.25000
ESB 181	143.26250	140.26250
ESB 182	143.27500	140.27500
ESB 183	143.28750	140.28750
ESB 184	143.30000	140.30000
ESB 185	143.31250	140.31250
ESB 186	143.32500	140.32500

<u>CHANNEL</u>	<u>BASE TX FREQ</u>	<u>MOBILE TX FREQ</u>
ESB 187	143.33750	140.33750
ESB 188	143.35000	140.35000
ESB 189	143.36250	140.36250
ESB 190	143.37500	140.37500
ESB 191	143.38750	140.38750
ESB 192	143.40000	140.40000
ESB 193	143.41250	140.41250
ESB 194	143.42500	140.42500
ESB 195	143.43750	140.43750
ESB 196	143.45000	140.45000
ESB 197	143.46250	140.46250
ESB 198	143.47500	140.47500
ESB 199	143.48750	140.48750
ESB 200	143.50000	140.50000

1.1.5 ESX BAND (12.5 kHz Channelling)

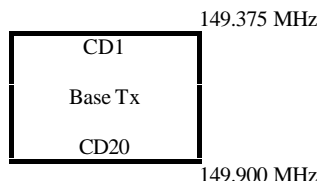
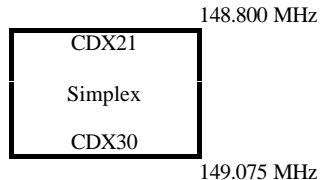
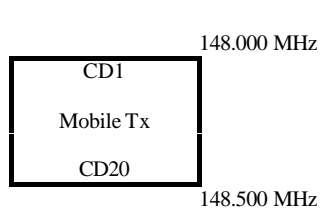
<u>CHANNEL</u>	<u>FREQUENCY</u>
ESX 1	140.51250
ESX 2	140.52500
ESX 3	140.53750
ESX 4	140.55000
ESX 5	140.56250
ESX 6	140.57500
ESX 7	140.58750
ESX 8	140.60000
ESX 9	140.61250
ESX 10	140.62500
ESX 11	140.63750
ESX 12	140.65000
ESX 13	140.66250
ESX 14	140.67500
ESX 15	140.68750
ESX 16	140.70000
ESX 17	140.71250
ESX 18	140.72500
ESX 19	140.73750
ESX 20	140.75000
ESX 21	140.76250
ESX 22	140.77500
ESX 23	140.78750
ESX 24	140.80000
ESX 25	140.81250
ESX 26	140.82500
ESX 27	140.83750
ESX 28	140.85000
ESX 29	140.86250
ESX 30	140.87500
ESX 31	140.88750
ESX 32	140.90000
ESX 33	140.91250
ESX 34	140.92500
ESX 35	140.93750
ESX 36	140.95000
ESX 37	140.96250
ESX 38	140.97500
ESX 39	140.98750
ESX 40	141.00000
ESX 41	143.51250
ESX 42	143.52500
ESX 43	143.53750
ESX 44	143.55000
ESX 45	143.56250
ESX 46	143.57500
ESX 47	143.58750
ESX 48	143.60000
ESX 49	143.61250

<u>CHANNEL</u>	<u>FREQUENCY</u>
ESX 50	143.62500
ESX 51	143.63750
ESX 52	143.65000
ESX 53	143.66250
ESX 54	143.67500
ESX 55	143.68750
ESX 56	143.70000
ESX 57	143.71250
ESX 58	143.72500
ESX 59	143.73750
ESX 60	143.75000
ESX 61	143.76250
ESX 62	143.77500
ESX 63	143.78750
ESX 64	143.80000
ESX 65	143.81250
ESX 66	143.82500
ESX 67	143.83750
ESX 68	143.85000
ESX 69	143.86250
ESX 70	143.87500
ESX 71	143.88750
ESX 72	143.90000
ESX 73	143.91250
ESX 74	143.92500
ESX 75	143.93750
ESX 76	143.95000
ESX 77	143.96250
ESX 78	143.97500
ESX 79	143.98750

1.1.6 CIVIL DEFENCE BAND (For reference only)

Band	Structure	EIRP	Emission	Channel Spacing	Remarks
------	-----------	------	----------	-----------------	---------

'CD'



Repeater
14 dBW
Mobile
14 dBW

FM

25 KHz

<u>CHANNEL</u>	<u>BASE TX FREQ</u>	<u>MOBILE TX FREQ</u>
CD 1	149.40000	148.01250
CD 2	149.42500	148.03750
CD 3	149.45000	148.06250
CD 4	149.47500	148.08750
CD 5	149.50000	148.11250
CD 6	149.52500	148.13750
CD 7	149.55000	148.16250
CD 8	149.57500	148.18750
CD 9	149.60000	148.21250
CD 10	149.62500	148.23750
CD 11	149.65000	148.26250
CD 12	149.67500	148.28750
CD 13	149.70000	148.31250
CD 14	149.72500	148.33750
CD 15	149.75000	148.36250
CD 16	149.77500	148.38750
CD 17	149.80000	148.41250
CD 18	149.82500	148.43750
CD 19	149.85000	148.46250
CD 20	149.87500	148.48750

1.1.7 CIVIL DEFENCE BAND SIMPLEX (For reference only)

<u>CHANNEL</u>	<u>FREQUENCY</u>
CD 21	148.8250
CD 22	148.8500
CD 23	148.8750
CD 24	148.9000
CD 25	148.9250
CD 26	148.9500
CD 27	148.9750
CD 28	149.0000
CD 29	149.0250
CD 30	149.0500

1.1.8 EN BAND (12.5 kHz Channelling)

Band	Structure	EIRP	Emission	Channel Spacing	Remarks
'EN'		150.050 MHz	Repeater 15.2 dBW	AM FM	12.5 kHz 12.5 kHz
	ENX1		Mobile 14 dBW		
	Simplex				
	ENX75	150.9875 MHz			
	EN22	151.0125 MHz			
	Base Tx				
	EN213	153.400 MHz			
	ENX76	153.43125 MHz			
	Simplex				
	ENX89	153.59375 MHz			
	EN87	153.60625 MHz			
	Mobile Tx				
	EN213	155.18125 MHz			
	EN22	155.19375 MHz			
Mobile Tx					
EN86					
		156.00 MHz			

<u>CHANNEL</u>	<u>BASE TX FREQ</u>	<u>MOBILE TX FREQ</u>
EN 22	151.01250	155.19375
EN 23	151.02500	155.20625
EN 24	151.03750	155.21875
EN 25	151.05000	155.23125
EN 26	151.06250	155.24375
EN 27	151.07500	155.25625
EN 28	151.08750	155.26875
EN 29	151.10000	155.28125
EN 30	151.11250	155.29375
EN 31	151.12500	155.30625
EN 32	151.13750	155.31875
EN 33	151.15000	155.33125
EN 34	151.16250	155.34375
EN 35	151.17500	155.35625
EN 36	151.18750	155.36875
EN 37	151.20000	155.38125
EN 38	151.21250	155.39375
EN 39	151.22500	155.40625
EN 40	151.23750	155.41875
EN 41	151.25000	155.43125
EN 42	151.26250	155.44375
EN 43	151.27500	155.45625
EN 44	151.28750	155.46875
EN 45	151.30000	155.48125
EN 46	151.31250	155.49375
EN 47	151.32500	155.50625

<u>CHANNEL</u>	<u>BASE TX FREQ</u>	<u>MOBILE TX FREQ</u>
EN 48	151.33750	155.51875
EN 49	151.35000	155.53125
EN 50	151.36250	155.54375
EN 51	151.37500	155.55625
EN 52	151.38750	155.56875
EN 53	151.40000	155.58125
EN 54	151.41250	155.59375
EN 55	151.42500	155.60625
EN 56	151.43750	155.61875
EN 57	151.45000	155.63125
EN 58	151.46250	155.64375
EN 59	151.47500	155.65625
EN 60	151.48750	155.66875
EN 61	151.50000	155.68125
EN 62	151.51250	155.69375
EN 63	151.52500	155.70625
EN 64	151.53750	155.71875
EN 65	151.55000	155.73125
EN 66	151.56250	155.74375
EN 67	151.57500	155.75625
EN 68	151.58750	155.76875
EN 69	151.60000	155.78125
EN 70	151.61250	155.79375
EN 71	151.62500	155.80625
EN 72	151.63750	155.81875
EN 73	151.65000	155.83125
EN 74	151.66250	155.84375
EN 75	151.67500	155.85625
EN 76	151.68750	155.86875
EN 77	151.70000	155.88125
EN 78	151.71250	155.89375
EN 79	151.72500	155.90625
EN 80	151.73750	155.91875
EN 81	151.75000	155.93125
EN 82	151.76250	155.94375
EN 83	151.77500	155.95625
EN 84	151.78750	155.96875
EN 85	151.80000	155.98125
EN 86	151.81250	155.99375
EN 87	151.82500	153.60625
EN 88	151.83750	153.61875
EN 89	151.85000	153.63125
EN 90	151.86250	153.64375
EN 91	151.87500	153.65625
EN 92	151.88750	153.66875
EN 93	151.90000	153.68125
EN 94	151.91250	153.69375
EN 95	151.92500	153.70625
EN 96	151.93750	153.71875
EN 97	151.95000	153.73125
EN 98	151.96250	153.74375
EN 99	151.97500	153.75625

<u>CHANNEL</u>	<u>BASE TX FREQ</u>	<u>MOBILE TX FREQ</u>
EN 100	151.98750	153.76875
EN 101	152.00000	153.78125
EN 102	152.01250	153.79375
EN 103	152.02500	153.80625
EN 104	152.03750	153.81875
EN 105	152.05000	153.83125
EN 106	152.06250	153.84375
EN 107	152.07500	153.85625
EN 108	152.08750	153.86875
EN 109	152.10000	153.88125
EN 110	152.11250	153.89375
EN 111	152.12500	153.90625
EN 112	152.13750	153.91875
EN 113	152.15000	153.93125
EN 114	152.16250	153.94375
EN 115	152.17500	153.95625
EN 116	152.18750	153.96875
EN 117	152.20000	153.98125
EN 118	152.21250	153.99375
EN 119	152.22500	154.00625
EN 120	152.23750	154.01875
EN 121	152.25000	154.03125
EN 122	152.26250	154.04375
EN 123	152.27500	154.05625
EN 124	152.28750	154.06875
EN 125	152.30000	154.08125
EN 126	152.31250	154.09375
EN 127	152.32500	154.10625
EN 128	152.33750	154.11875
EN 129	152.35000	154.13125
EN 130	152.36250	154.14375
EN 131	152.37500	154.15625
EN 132	152.38750	154.16875
EN 133	152.40000	154.18125
EN 134	152.41250	154.19375
EN 135	152.42500	154.20625
EN 136	152.43750	154.21875
EN 137	152.45000	154.23125
EN 138	152.46250	154.24375
EN 139	152.47500	154.25625
EN 140	152.48750	154.26875
EN 141	152.50000	154.28125
EN 142	152.51250	154.29375
EN 143	152.52500	154.30625
EN 144	152.53750	154.31875
EN 145	152.55000	154.33125
EN 146	152.56250	154.34375
EN 147	152.57500	154.35625
EN 148	152.58750	154.36875
EN 149	152.60000	154.38125
EN 150	152.61250	154.39375
EN 151	152.62500	154.40625

<u>CHANNEL</u>	<u>BASE TX FREQ</u>	<u>MOBILE TX FREQ</u>
EN 152	152.63750	154.41875
EN 153	152.65000	154.43125
EN 154	152.66250	154.44375
EN 155	152.67500	154.45625
EN 156	152.68750	154.46875
EN 157	152.70000	154.48125
EN 158	152.71250	154.49375
EN 159	152.72500	154.50625
EN 160	152.73750	154.51875
EN 161	152.75000	154.53125
EN 162	152.76250	154.54375
EN 163	152.77500	154.55625
EN 164	152.78750	154.56875
EN 165	152.80000	154.58125
EN 166	152.81250	154.59375
EN 167	152.82500	154.60625
EN 168	152.83750	154.61875
EN 169	152.85000	154.63125
EN 170	152.86250	154.64375
EN 171	152.87500	154.65625
EN 172	152.88750	154.66875
EN 173	152.90000	154.68125
EN 174	152.91250	154.69375
EN 175	152.92500	154.70625
EN 176	152.93750	154.71875
EN 177	152.95000	154.73125
EN 178	152.96250	154.74375
EN 179	152.97500	154.75625
EN 180	152.98750	154.76875
EN 181	153.00000	154.78125
EN 182	153.01250	154.79375
EN 183	153.02500	154.80625
EN 184	153.03750	154.81875
EN 185	153.05000	154.83125
EN 186	153.06250	154.84375
EN 187	153.07500	154.85625
EN 188	153.08750	154.86875
EN 189	153.10000	154.88125
EN 190	153.11250	154.89375
EN 191	153.12500	154.90625
EN 192	153.13750	154.91875
EN 193	153.15000	154.93125
EN 194	153.16250	154.94375
EN 195	153.17500	154.95625
EN 196	153.18750	154.96875
EN 197	153.20000	154.98125
EN 198	153.21250	154.99375
EN 199	153.22500	155.00625
EN 200	153.23750	155.01875
EN 201	153.25000	155.03125
EN 202	153.26250	155.04375
EN 203	153.27500	155.05625

<u>CHANNEL</u>	<u>BASE TX FREQ</u>	<u>MOBILE TX FREQ</u>
EN 204	153.28750	155.06875
EN 205	153.30000	155.08125
EN 206	153.31250	155.09375
EN 207	153.32500	155.10625
EN 208	153.33750	155.11875
EN 209	153.35000	155.13125
EN 210	153.36250	155.14375
EN 211	153.37500	155.15625
EN 212	153.38750	155.16875
EN 213	153.40000	155.18125

1.1.9 ENX BAND SIMPLEX (12.5 KHz Channelling)

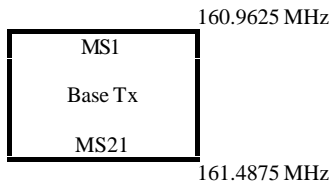
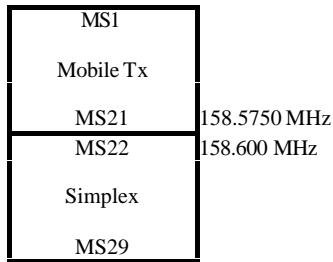
<u>CHANNEL</u>	<u>FREQUENCY</u>
ENX 1	150.06250
ENX 2	150.07500
ENX 3	150.08750
ENX 4	150.10000
ENX 5	150.11250
ENX 6	150.12500
ENX 7	150.13750
ENX 8	150.15000
ENX 9	150.16250
ENX 10	150.17500
ENX 11	150.18750
ENX 12	150.20000
ENX 13	150.21250
ENX 14	150.22500
ENX 15	150.23750
ENX 16	150.25000
ENX 17	150.26250
ENX 18	150.27500
ENX 19	150.28750
ENX 20	150.30000
ENX 21	150.31250
ENX 22	150.32500
ENX 23	150.33750
ENX 24	150.35000
ENX 25	150.36250
ENX 26	150.37500
ENX 27	150.38750
ENX 28	150.40000
ENX 29	150.41250
ENX 30	150.42500
ENX 31	150.43750
ENX 32	150.45000
ENX 33	150.46250
ENX 34	150.47500
ENX 35	150.48750
ENX 36	150.50000
ENX 37	150.51250
ENX 38	150.52500
ENX 39	150.53750
ENX 40	150.55000
ENX 41	150.56250
ENX 42	150.57500
ENX 43	150.58750
ENX 44	150.60000
ENX 45	150.61250
ENX 46	150.62500
ENX 47	150.63750
ENX 48	150.65000
ENX 49	150.66250
ENX 50	150.67500

<u>CHANNEL</u>	<u>FREQUENCY</u>
ENX 51	150.68750
ENX 52	150.70000
ENX 53	150.71250
ENX 54	150.72500
ENX 55	150.73750
ENX 56	150.75000
ENX 57	150.76250
ENX 58	150.77500
ENX 59	150.78750
ENX 60	150.80000
ENX 61	150.81250
ENX 62	150.82500
ENX 63	150.83750
ENX 64	150.85000
ENX 65	150.86250
ENX 66	150.87500
ENX 67	150.88750
ENX 68	150.90000
ENX 69	150.91250
ENX 70	150.92500
ENX 71	150.93750
ENX 72	150.95000
ENX 73	150.96250
ENX 74	150.97500
ENX 75	150.98750
ENX 76	153.43125
ENX 77	153.44375
ENX 78	153.45625
ENX 79	153.46875
ENX 80	153.48125
ENX 81	153.49375
ENX 82	153.50625
ENX 83	153.51875
ENX 84	153.53125
ENX 85	153.54375
ENX 86	153.55625
ENX 87	153.56875
ENX 88	153.58125
ENX 89	153.59375

1.1.10 MS BAND (25 kHz Channelling)

Band	Structure	EIRP	Emission	Channel Spacing	Remarks
------	-----------	------	----------	-----------------	---------

'MS' 158.0625 MHz Repeater 14 dBW FM 25 kHz
 Mobile 14 dBW



<u>CHANNEL</u>	<u>BASE TX FREQ</u>	<u>MOBILE TX FREQ</u>
MS 1	160.9750	158.0750
MS 2	161.0000	158.1000
MS 3	161.0250	158.1250
MS 4	161.0500	158.1500
MS 5	161.0750	158.1750
MS 6	161.1000	158.2000
MS 7	161.1250	158.2250
MS 8	161.1500	158.2500
MS 9	161.1750	158.2750
MS 10	161.2000	158.3000
MS 11	161.2250	158.3250
MS 12	161.2500	158.3500
MS 13	161.2750	158.3750
MS 14	161.3000	158.4000
MS 15	161.3250	158.4250
MS 16	161.3500	158.4500
MS 17	161.3750	158.4750
MS 18	161.4000	158.5000
MS 19	161.4250	158.5250
MS 20	161.4500	158.5500
MS 21	161.4750	158.5750

1.1.11 MS BAND SIMPLEX (25 kHz Channelling)

SINGLE FREQUENCY CHANNELS

<u>CHANNEL</u>	<u>FREQUENCY</u>
MS 22	158.6000
MS 23	158.6250
MS 24	158.6500
MS 25	158.6750
MS 26	158.7000
MS 27	158.7250
MS 28	158.7500
MS 29	158.7750

1.1.12 EE BAND (12.5 kHz Channelling)

Band	Structure	EIRP	Emission	Channel Spacing	Remarks
'EE'		Repeater 15.2 dBW Mobile 14 dBW	FM	12.5 kHz	
	EE31 Base Tx	162.5875 MHz			
	EE250	165.3250 MHz			
	EEX1 Simplex	165.7125 MHz			
	EEX87	166.7875 MHz			
	EE31 Mobile Tx	167.1875 MHz			
	EE250	169.9250 MHz			
	EEX88 Simplex	170.3125 MHz			
	EEX382	174.00 MHz			

<u>CHANNEL</u>	<u>BASE TX FREQ</u>	<u>MOBILE TX FREQ</u>
EE 31	162.5875	167.1875
EE 32	162.6000	167.2000
EE 33	162.6125	167.2125
EE 34	162.6250	167.2250
EE 35	162.6375	167.2375
EE 36	162.6500	167.2500
EE 37	162.6625	167.2625
EE 38	162.6750	167.2750
EE 39	162.6875	167.2875
EE 40	162.7000	167.3000
EE 41	162.7125	167.3125
EE 42	162.7250	167.3250
EE 43	162.7375	167.3375
EE 44	162.7500	167.3500
EE 45	162.7625	167.3625
EE 46	162.7750	167.3750
EE 47	162.7875	167.3875
EE 48	162.8000	167.4000
EE 49	162.8125	167.4125
EE 50	162.8250	167.4250
EE 51	162.8375	167.4375
EE 52	162.8500	167.4500
EE 53	162.8625	167.4625
EE 54	162.8750	167.4750
EE 55	162.8875	167.4875
EE 56	162.9000	167.5000
EE 57	162.9125	167.5125
EE 58	162.9250	167.5250
EE 59	162.9375	167.5375
EE 60	162.9500	167.5500

<u>CHANNEL</u>	<u>BASE TX FREQ</u>	<u>MOBILE TX FREQ</u>
EE 61	162.9625	167.5625
EE 62	162.9750	167.5750
EE 63	162.9875	167.5875
EE 64	163.0000	167.6000
EE 65	163.0125	167.6125
EE 66	163.0250	167.6250
EE 67	163.0375	167.6375
EE 68	163.0500	167.6500
EE 69	163.0625	167.6625
EE 70	163.0750	167.6750
EE 71	163.0875	167.6875
EE 72	163.1000	167.7000
EE 73	163.1125	167.7125
EE 74	163.1250	167.7250
EE 75	163.1375	167.7375
EE 76	163.1500	167.7500
EE 77	163.1625	167.7625
EE 78	163.1750	167.7750
EE 79	163.1875	167.7875
EE 80	163.2000	167.8000
EE 81	163.2125	167.8125
EE 82	163.2250	167.8250
EE 83	163.2375	167.8375
EE 84	163.2500	167.8500
EE 85	163.2625	167.8625
EE 86	163.2750	167.8750
EE 87	163.2875	167.8875
EE 88	163.3000	167.9000
EE 89	163.3125	167.9125
EE 90	163.3250	167.9250
EE 91	163.3375	167.9375
EE 92	163.3500	167.9500
EE 93	163.3625	167.9625
EE 94	163.3750	167.9750
EE 95	163.3875	167.9875
EE 96	163.4000	168.0000
EE 97	163.4125	168.0125
EE 98	163.4250	168.0250
EE 99	163.4375	168.0375
EE 100	163.4500	168.0500
EE 101	163.4625	168.0625
EE 102	163.4750	168.0750
EE 103	163.4875	168.0875
EE 104	163.5000	168.1000
EE 105	163.5125	168.1125
EE 106	163.5250	168.1250
EE 107	163.5375	168.1375
EE 108	163.5500	168.1500
EE 109	163.5625	168.1625
EE 110	163.5750	168.1750
EE 111	163.5875	168.1875
EE 112	163.6000	168.2000

<u>CHANNEL</u>	<u>BASE TX FREQ</u>	<u>MOBILE TX FREQ</u>
EE 113	163.6125	168.2125
EE 114	163.6250	168.2250
EE 115	163.6375	168.2375
EE 116	163.6500	168.2500
EE 117	163.6625	168.2625
EE 118	163.6750	168.2750
EE 119	163.6875	168.2875
EE 120	163.7000	168.3000
EE 121	163.7125	168.3125
EE 122	163.7250	168.3250
EE 123	163.7375	168.3375
EE 124	163.7500	168.3500
EE 125	163.7625	168.3625
EE 126	163.7750	168.3750
EE 127	163.7875	168.3875
EE 128	163.8000	168.4000
EE 129	163.8125	168.4125
EE 130	163.8250	168.4250
EE 131	163.8375	168.4375
EE 132	163.8500	168.4500
EE 133	163.8625	168.4625
EE 134	163.8750	168.4750
EE 135	163.8875	168.4875
EE 136	163.9000	168.5000
EE 137	163.9125	168.5125
EE 138	163.9250	168.5250
EE 139	163.9375	168.5375
EE 140	163.9500	168.5500
EE 141	163.9625	168.5625
EE 142	163.9750	168.5750
EE 143	163.9875	168.5875
EE 144	164.0000	168.6000
EE 145	164.0125	168.6125
EE 146	164.0250	168.6250
EE 147	164.0375	168.6375
EE 148	164.0500	168.6500
EE 149	164.0625	168.6625
EE 150	164.0750	168.6750
EE 151	164.0875	168.6875
EE 152	164.1000	168.7000
EE 153	164.1125	168.7125
EE 154	164.1250	168.7250
EE 155	164.1375	168.7375
EE 156	164.1500	168.7500
EE 157	164.1625	168.7625
EE 158	164.1750	168.7750
EE 159	164.1875	168.7875
EE 160	164.2000	168.8000
EE 161	164.2125	168.8125
EE 162	164.2250	168.8250
EE 163	164.2375	168.8375
EE 164	164.2500	168.8500

<u>CHANNEL</u>	<u>BASE TX FREQ</u>	<u>MOBILE TX FREQ</u>
EE 165	164.2625	168.8625
EE 166	164.2750	168.8750
EE 167	164.2875	168.8875
EE 168	164.3000	168.9000
EE 169	164.3125	168.9125
EE 170	164.3250	168.9250
EE 171	164.3375	168.9375
EE 172	164.3500	168.9500
EE 173	164.3625	168.9625
EE 174	164.3750	168.9750
EE 175	164.3875	168.9875
EE 176	164.4000	169.0000
EE 177	164.4125	169.0125
EE 178	164.4250	169.0250
EE 179	164.4375	169.0375
EE 180	164.4500	169.0500
EE 181	164.4625	169.0625
EE 182	164.4750	169.0750
EE 183	164.4875	169.0875
EE 184	164.5000	169.1000
EE 185	164.5125	169.1125
EE 186	164.5250	169.1250
EE 187	164.5375	169.1375
EE 188	164.5500	169.1500
EE 189	164.5625	169.1625
EE 190	164.5750	169.1750
EE 191	164.5875	169.1875
EE 192	164.6000	169.2000
EE 193	164.6125	169.2125
EE 194	164.6250	169.2250
EE 195	164.6375	169.2375
EE 196	164.6500	169.2500
EE 197	164.6625	169.2625
EE 198	164.6750	169.2750
EE 199	164.6875	169.2875
EE 200	164.7000	169.3000
EE 201	164.7125	169.3125
EE 202	164.7250	169.3250
EE 203	164.7375	169.3375
EE 204	164.7500	169.3500
EE 205	164.7625	169.3625
EE 206	164.7750	169.3750
EE 207	164.7875	169.3875
EE 208	164.8000	169.4000
EE 209	164.8125	169.4125
EE 210	164.8250	169.4250
EE 211	164.8375	169.4375
EE 212	164.8500	169.4500
EE 213	164.8625	169.4625
EE 214	164.8750	169.4750
EE 215	164.8875	169.4875
EE 216	164.9000	169.5000

<u>CHANNEL</u>	<u>BASE TX FREQ</u>	<u>MOBILE TX FREQ</u>
EE 217	164.9125	169.5125
EE 218	164.9250	169.5250
EE 219	164.9375	169.5375
EE 220	164.9500	169.5500
EE 221	164.9625	169.5625
EE 222	164.9750	169.5750
EE 223	164.9875	169.5875
EE 224	165.0000	169.6000
EE 225	165.0125	169.6125
EE 226	165.0250	169.6250
EE 227	165.0375	169.6375
EE 228	165.0500	169.6500
EE 229	165.0625	169.6625
EE 230	165.0750	169.6750
EE 231	165.0875	169.6875
EE 232	165.1000	169.7000
EE 233	165.1125	169.7125
EE 234	165.1250	169.7250
EE 235	165.1375	169.7375
EE 236	165.1500	169.7500
EE 237	165.1625	169.7625
EE 238	165.1750	169.7750
EE 239	165.1875	169.7875
EE 240	165.2000	169.8000
EE 241	165.2125	169.8125
EE 242	165.2250	169.8250
EE 243	165.2375	169.8375
EE 244	165.2500	169.8500
EE 245	165.2625	169.8625
EE 246	165.2750	169.8750
EE 247	165.2875	169.8875
EE 248	165.3000	169.9000
EE 249	165.3125	169.9125
EE 250	165.3250	169.9250

1.1.13 EEX BAND (12.5 kHz Channelling)

<u>CHANNEL</u>	<u>FREQUENCY</u>
EEX 1	165.7125
EEX 2	165.7250
EEX 3	165.7375
EEX 4	165.7500
EEX 5	165.7625
EEX 6	165.7750
EEX 7	165.7875
EEX 8	165.8000
EEX 9	165.8125
EEX 10	165.8250
EEX 11	165.8375
EEX 12	165.8500
EEX 13	165.8625
EEX 14	165.8750
EEX 15	165.8875
EEX 16	165.9000
EEX 17	165.9125
EEX 18	165.9250
EEX 19	165.9375
EEX 20	165.9500
EEX 21	165.9625
EEX 22	165.9750
EEX 23	165.9875
EEX 24	166.0000
EEX 25	166.0125
EEX 26	166.0250
EEX 27	166.0375
EEX 28	166.0500
EEX 29	166.0625
EEX 30	166.0750
EEX 31	166.0875
EEX 32	166.1000
EEX 33	166.1125
EEX 34	166.1250
EEX 35	166.1375
EEX 36	166.1500
EEX 37	166.1625
EEX 38	166.1750
EEX 39	166.1875
EEX 40	166.2000
EEX 41	166.2125
EEX 42	166.2250
EEX 43	166.2375
EEX 44	166.2500
EEX 45	166.2625
EEX 46	166.2750
EEX 47	166.2875
EEX 48	166.3000
EEX 49	166.3125
EEX 50	166.3250

<u>CHANNEL</u>	<u>FREQUENCY</u>
EEX 51	166.3375
EEX 52	166.3500
EEX 53	166.3625
EEX 54	166.3750
EEX 55	166.3875
EEX 56	166.4000
EEX 57	166.4125
EEX 58	166.4250
EEX 59	166.4375
EEX 60	166.4500
EEX 61	166.4625
EEX 62	166.4750
EEX 63	166.4875
EEX 64	166.5000
EEX 65	166.5125
EEX 66	166.5250
EEX 67	166.5375
EEX 68	166.5500
EEX 69	166.5625
EEX 70	166.5750
EEX 71	166.5875
EEX 72	166.6000
EEX 73	166.6125
EEX 74	166.6250
EEX 75	166.6375
EEX 76	166.6500
EEX 77	166.6625
EEX 78	166.6750
EEX 79	166.6875
EEX 80	166.7000
EEX 81	166.7125
EEX 82	166.7250
EEX 83	166.7375
EEX 84	166.7500
EEX 85	166.7625
EEX 86	166.7750
EEX 87	166.7875
EEX 88	170.3125
EEX 89	170.3250
EEX 90	170.3375
EEX 91	170.3500
EEX 92	170.3625
EEX 93	170.3750
EEX 94	170.3875
EEX 95	170.4000
EEX 96	170.4125
EEX 97	170.4250
EEX 98	170.4375
EEX 99	170.4500
EEX 100	170.4625
EEX 101	170.4750

<u>CHANNEL</u>	<u>FREQUENCY</u>
EEX 102	170.4875
EEX 103	170.5000
EEX 104	170.5125
EEX 105	170.5250
EEX 106	170.5375
EEX 107	170.5500
EEX 108	170.5625
EEX 109	170.5750
EEX 110	170.5875
EEX 111	170.6000
EEX 112	170.6125
EEX 113	170.6250
EEX 114	170.6375
EEX 115	170.6500
EEX 116	170.6625
EEX 117	170.6750
EEX 118	170.6875
EEX 119	170.7000
EEX 120	170.7125
EEX 121	170.7250
EEX 122	170.7375
EEX 123	170.7500
EEX 124	170.7625
EEX 125	170.7750
EEX 126	170.7875
EEX 127	170.8000
EEX 128	170.8125
EEX 129	170.8250
EEX 130	170.8375
EEX 131	170.8500
EEX 132	170.8625
EEX 133	170.8750
EEX 134	170.8875
EEX 135	170.9000
EEX 136	170.9125
EEX 137	170.9250
EEX 138	170.9375
EEX 139	170.9500
EEX 140	170.9625
EEX 141	170.9750
EEX 142	170.9875
EEX 143	171.0000
EEX 144	171.0125
EEX 145	171.0250
EEX 146	171.0375
EEX 147	171.0500
EEX 148	171.0625
EEX 149	171.0750
EEX 150	171.0875
EEX 151	171.1000
EEX 152	171.1125
EEX 153	171.1250

<u>CHANNEL</u>	<u>FREQUENCY</u>
EEX 154	171.1375
EEX 155	171.1500
EEX 156	171.1625
EEX 157	171.1750
EEX 158	171.1875
EEX 159	171.2000
EEX 160	171.2125
EEX 161	171.2250
EEX 162	171.2375
EEX 163	171.2500
EEX 164	171.2625
EEX 165	171.2750
EEX 166	171.2875
EEX 167	171.3000
EEX 168	171.3125
EEX 169	171.3250
EEX 170	171.3375
EEX 171	171.3500
EEX 172	171.3625
EEX 173	171.3750
EEX 174	171.3875
EEX 175	171.4000
EEX 176	171.4125
EEX 177	171.4250
EEX 178	171.4375
EEX 179	171.4500
EEX 180	171.4625
EEX 181	171.4750
EEX 182	171.4875
EEX 183	171.5000
EEX 184	171.5125
EEX 185	171.5250
EEX 186	171.5375
EEX 187	171.5500
EEX 188	171.5625
EEX 189	171.5750
EEX 190	171.5875
EEX 191	171.6000
EEX 192	171.6125
EEX 193	171.6250
EEX 194	171.6375
EEX 195	171.6500
EEX 196	171.6625
EEX 197	171.6750
EEX 198	171.6875
EEX 199	171.7000
EEX 200	171.7125
EEX 201	171.7250
EEX 202	171.7375
EEX 203	171.7500
EEX 204	171.7625
EEX 205	171.7750

<u>CHANNEL</u>	<u>FREQUENCY</u>
EEX 206	171.7875
EEX 207	171.8000
EEX 208	171.8125
EEX 209	171.8250
EEX 210	171.8375
EEX 211	171.8500
EEX 212	171.8625
EEX 213	171.8750
EEX 214	171.8875
EEX 215	171.9000
EEX 216	171.9125
EEX 217	171.9250
EEX 218	171.9375
EEX 219	171.9500
EEX 220	171.9625
EEX 221	171.9750
EEX 222	171.9875
EEX 223	172.0000
EEX 224	172.0125
EEX 225	172.0250
EEX 226	172.0375
EEX 227	172.0500
EEX 228	172.0625
EEX 229	172.0750
EEX 230	172.0875
EEX 231	172.1000
EEX 232	172.1125
EEX 233	172.1250
EEX 234	172.1375
EEX 235	172.1500
EEX 236	172.1625
EEX 237	172.1750
EEX 238	172.1875
EEX 239	172.2000
EEX 240	172.2125
EEX 241	172.2250
EEX 242	172.2375
EEX 243	172.2500
EEX 244	172.2625
EEX 245	172.2750
EEX 246	172.2875
EEX 247	172.3000
EEX 248	172.3125
EEX 249	172.3250
EEX 250	172.3375
EEX 251	172.3500
EEX 252	172.3625
EEX 253	172.3750
EEX 254	172.3875
EEX 255	172.4000
EEX 256	172.4125
EEX 257	172.4250

<u>CHANNEL</u>	<u>FREQUENCY</u>
EEX 258	172.4375
EEX 259	172.4500
EEX 260	172.4625
EEX 261	172.4750
EEX 262	172.4875
EEX 263	172.5000
EEX 264	172.5125
EEX 265	172.5250
EEX 266	172.5375
EEX 267	172.5500
EEX 268	172.5625
EEX 269	172.5750
EEX 270	172.5875
EEX 271	172.6000
EEX 272	172.6125
EEX 273	172.6250
EEX 274	172.6375
EEX 275	172.6500
EEX 276	172.6625
EEX 277	172.6750
EEX 278	172.6875
EEX 279	172.7000
EEX 280	172.7125
EEX 281	172.7250
EEX 282	172.7375
EEX 283	172.7500
EEX 284	172.7625
EEX 285	172.7750
EEX 286	172.7875
EEX 287	172.8000
EEX 288	172.8125
EEX 289	172.8250
EEX 290	172.8375
EEX 291	172.8500
EEX 292	172.8625
EEX 293	172.8750
EEX 294	172.8875
EEX 295	172.9000
EEX 296	172.9125
EEX 297	172.9250
EEX 298	172.9375
EEX 299	172.9500
EEX 300	172.9625
EEX 301	172.9750
EEX 302	172.9875
EEX 303	173.0000
EEX 304	173.0125
EEX 305	173.0250
EEX 306	173.0375
EEX 307	173.0500
EEX 308	173.0625
EEX 309	173.0750

<u>CHANNEL</u>	<u>FREQUENCY</u>
EEX 310	173.0875
EEX 311	173.1000
EEX 312	173.1125
EEX 313	173.1250
EEX 314	173.1375
EEX 315	173.1500
EEX 316	173.1625
EEX 317	173.1750
EEX 318	173.1875
EEX 319	173.2000
EEX 320	173.2125
EEX 321	173.2250
EEX 322	173.2375
EEX 323	173.2500
EEX 324	173.2625
EEX 325	173.2750
EEX 326	173.2875
EEX 327	173.3000
EEX 328	173.3125
EEX 329	173.3250
EEX 330	173.3375
EEX 331	173.3500
EEX 332	173.3625
EEX 333	173.3750
EEX 334	173.3875
EEX 335	173.4000
EEX 336	173.4125
EEX 337	173.4250
EEX 338	173.4375
EEX 339	173.4500
EEX 340	173.4625
EEX 341	173.4750
EEX 342	173.4875
EEX 343	173.5000
EEX 344	173.5125
EEX 345	173.5250
EEX 346	173.5375
EEX 347	173.5500
EEX 348	173.5625
EEX 349	173.5750
EEX 350	173.5875
EEX 351	173.6000
EEX 352	173.6125
EEX 353	173.6250
EEX 354	173.6375
EEX 355	173.6500
EEX 356	173.6625
EEX 357	173.6750
EEX 358	173.6875
EEX 359	173.7000
EEX 360	173.7125
EEX 361	173.7250

<u>CHANNEL</u>	<u>FREQUENCY</u>
EEX 362	173.7375
EEX 363	173.7500
EEX 364	173.7625
EEX 365	173.7750
EEX 366	173.7875
EEX 367	173.8000
EEX 368	173.8125
EEX 369	173.8250
EEX 370	173.8375
EEX 371	173.8500
EEX 372	173.8625
EEX 373	173.8750
EEX 374	173.8875
EEX 375	173.9000
EEX 376	173.9125
EEX 377	173.9250
EEX 378	173.9375
EEX 379	173.9500
EEX 380	173.9625
EEX 381	173.9750
EEX 382	173.9875

1.1.14 BUSH WINCH BANDS

Band	Structure	EIRP	Emission	Channel Spacing	Remarks
'BW'		14 dBW	FM	25 kHz	

BW1A	159.100 MHz
Simplex	
BW12A	159.375 MHz
BW1B	173.700 MHz
Simplex	
BW12B	173.975 MHz

<u>CHANNEL</u>	<u>FREQUENCY</u>
BW 1A	159.1000
BW 2A	159.1250
BW 3A	159.1500
BW 4A	159.1750
BW 5A	159.2000
BW 6A	159.2250
BW 7A	159.2500
BW 8A	159.2750
BW 9A	159.3000
BW 10A	159.3250
BW 11A	159.3500
BW 12A	159.3750
BW 1B	173.7000
BW 2B	173.7250
BW 3B	173.7500
BW 4B	173.7750
BW 5B	173.8000
BW 6B	173.8250
BW 7B	173.8500
BW 8B	173.8750
BW 9B	173.9000
BW 10B	173.9250
BW 11B	173.9500
BW 12B	173.9750

CHANNELBASE TX FREQMOBILE TX FREQ

Band	Structure	EIRP	Emission	Channel Spacing	Remarks
'BWN'		14 dBW	FM	12.5 kHz	

BWN1A	159.100 MHz
Simplex	
BWN24A	159.3875 MHz

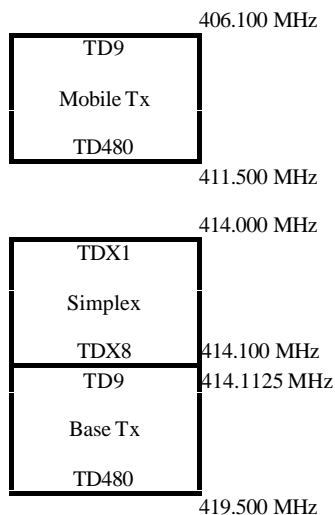
CHANNELFREQUENCY

BWN1A	159.1000
BWN2A	159.1125
BWN3A	159.1250
BWN4A	159.1375
BWN5A	159.1500
BWN6A	159.1625
BWN7A	159.1750
BWN8A	159.1875
BWN9A	159.2000
BWN10A	159.2125
BWN11A	159.2250
BWN12A	159.2375
BWN13A	159.2500
BWN14A	159.2625
BWN15A	159.2750
BWN16A	159.2875
BWN17A	159.3000
BWN18A	159.3125
BWN19A	159.3250
BWN20A	159.3375
BWN21A	159.3500
BWN22A	159.3625
BWN23A	159.3750
BWN24A	159.3875

CHANNELBASE TX FREQMOBILE TX FREQ**1.2 UHF (300 MHz to 1000 MHz)****1.2.1 TD BAND**

Band	Structure	EIRP	Emission	Channel Spacing	Remarks
------	-----------	------	----------	-----------------	---------

'TD'



Repeater
17 dBW
Mobile
14 dBW

FM

12.5 kHz

CHANNELBASE TX FREQMOBILE TX FREQ

TD 9	414.11250	406.11250
TD 10	414.12500	406.12500
TD 11	414.13750	406.13750
TD 12	414.15000	406.15000
TD 13	414.16250	406.16250
TD 14	414.17500	406.17500
TD 15	414.18750	406.18750
TD 16	414.20000	406.20000
TD 17	414.21250	406.21250
TD 18	414.22500	406.22500
TD 19	414.23750	406.23750
TD 20	414.25000	406.25000
TD 21	414.26250	406.26250
TD 22	414.27500	406.27500
TD 23	414.28750	406.28750
TD 24	414.30000	406.30000
TD 25	414.31250	406.31250
TD 26	414.32500	406.32500
TD 27	414.33750	406.33750
TD 28	414.35000	406.35000
TD 29	414.36250	406.36250
TD 30	414.37500	406.37500
TD 31	414.38750	406.38750
TD 32	414.40000	406.40000
TD 33	414.41250	406.41250

<u>CHANNEL</u>	<u>BASE TX FREQ</u>	<u>MOBILE TX FREQ</u>
TD 34	414.42500	406.42500
TD 35	414.43750	406.43750
TD 36	414.45000	406.45000
TD 37	414.46250	406.46250
TD 38	414.47500	406.47500
TD 39	414.48750	406.48750
TD 40	414.50000	406.50000
TD 41	414.51250	406.51250
TD 42	414.52500	406.52500
TD 43	414.53750	406.53750
TD 44	414.55000	406.55000
TD 45	414.56250	406.56250
TD 46	414.57500	406.57500
TD 47	414.58750	406.58750
TD 48	414.60000	406.60000
TD 49	414.61250	406.61250
TD 50	414.62500	406.62500
TD 51	414.63750	406.63750
TD 52	414.65000	406.65000
TD 53	414.66250	406.66250
TD 54	414.67500	406.67500
TD 55	414.68750	406.68750
TD 56	414.70000	406.70000
TD 57	414.71250	406.71250
TD 58	414.72500	406.72500
TD 59	414.73750	406.73750
TD 60	414.75000	406.75000
TD 61	414.76250	406.76250
TD 62	414.77500	406.77500
TD 63	414.78750	406.78750
TD 64	414.80000	406.80000
TD 65	414.81250	406.81250
TD 66	414.82500	406.82500
TD 67	414.83750	406.83750
TD 68	414.85000	406.85000
TD 69	414.86250	406.86250
TD 70	414.87500	406.87500
TD 71	414.88750	406.88750
TD 72	414.90000	406.90000
TD 73	414.91250	406.91250
TD 74	414.92500	406.92500
TD 75	414.93750	406.93750
TD 76	414.95000	406.95000
TD 77	414.96250	406.96250
TD 78	414.97500	406.97500
TD 79	414.98750	406.98750
TD 80	415.00000	407.00000
TD 81	415.01250	407.01250
TD 82	415.02500	407.02500

<u>CHANNEL</u>	<u>BASE TX FREQ</u>	<u>MOBILE TX FREQ</u>
TD 83	415.03750	407.03750
TD 84	415.05000	407.05000
TD 85	415.06250	407.06250
TD 86	415.07500	407.07500
TD 87	415.08750	407.08750
TD 88	415.10000	407.10000
TD 89	415.11250	407.11250
TD 90	415.12500	407.12500
TD 91	415.13750	407.13750
TD 92	415.15000	407.15000
TD 93	415.16250	407.16250
TD 94	415.17500	407.17500
TD 95	415.18750	407.18750
TD 96	415.20000	407.20000
TD 97	415.21250	407.21250
TD 98	415.22500	407.22500
TD 99	415.23750	407.23750
TD 100	415.25000	407.25000
TD 101	415.26250	407.26250
TD 102	415.27500	407.27500
TD 103	415.28750	407.28750
TD 104	415.30000	407.30000
TD 105	415.31250	407.31250
TD 106	415.32500	407.32500
TD 107	415.33750	407.33750
TD 108	415.35000	407.35000
TD 109	415.36250	407.36250
TD 110	415.37500	407.37500
TD 111	415.38750	407.38750
TD 112	415.40000	407.40000
TD 113	415.41250	407.41250
TD 114	415.42500	407.42500
TD 115	415.43750	407.43750
TD 116	415.45000	407.45000
TD 117	415.46250	407.46250
TD 118	415.47500	407.47500
TD 119	415.48750	407.48750
TD 120	415.50000	407.50000
TD 121	415.51250	407.51250
TD 122	415.52500	407.52500
TD 123	415.53750	407.53750
TD 124	415.55000	407.55000
TD 125	415.56250	407.56250
TD 126	415.57500	407.57500
TD 127	415.58750	407.58750
TD 128	415.60000	407.60000
TD 129	415.61250	407.61250
TD 130	415.62500	407.62500
TD 131	415.63750	407.63750

<u>CHANNEL</u>	<u>BASE TX FREQ</u>	<u>MOBILE TX FREQ</u>
TD 132	415.65000	407.65000
TD 133	415.66250	407.66250
TD 134	415.67500	407.67500
TD 135	415.68750	407.68750
TD 136	415.70000	407.70000
TD 137	415.71250	407.71250
TD 138	415.72500	407.72500
TD 139	415.73750	407.73750
TD 140	415.75000	407.75000
TD 141	415.76250	407.76250
TD 142	415.77500	407.77500
TD 143	415.78750	407.78750
TD 144	415.80000	407.80000
TD 145	415.81250	407.81250
TD 146	415.82500	407.82500
TD 147	415.83750	407.83750
TD 148	415.85000	407.85000
TD 149	415.86250	407.86250
TD 150	415.87500	407.87500
TD 151	415.88750	407.88750
TD 152	415.90000	407.90000
TD 153	415.91250	407.91250
TD 154	415.92500	407.92500
TD 155	415.93750	407.93750
TD 156	415.95000	407.95000
TD 157	415.96250	407.96250
TD 158	415.97500	407.97500
TD 159	415.98750	407.98750
TD 160	416.00000	408.00000
TD 161	416.01250	408.01250
TD 162	416.02500	408.02500
TD 163	416.03750	408.03750
TD 164	416.05000	408.05000
TD 165	416.06250	408.06250
TD 166	416.07500	408.07500
TD 167	416.08750	408.08750
TD 168	416.10000	408.10000
TD 169	416.11250	408.11250
TD 170	416.12500	408.12500
TD 171	416.13750	408.13750
TD 172	416.15000	408.15000
TD 173	416.16250	408.16250
TD 174	416.17500	408.17500
TD 175	416.18750	408.18750
TD 176	416.20000	408.20000
TD 177	416.21250	408.21250
TD 178	416.22500	408.22500
TD 179	416.23750	408.23750
TD 180	416.25000	408.25000

<u>CHANNEL</u>	<u>BASE TX FREQ</u>	<u>MOBILE TX FREQ</u>
TD 181	416.26250	408.26250
TD 182	416.27500	408.27500
TD 183	416.28750	408.28750
TD 184	416.30000	408.30000
TD 185	416.31250	408.31250
TD 186	416.32500	408.32500
TD 187	416.33750	408.33750
TD 188	416.35000	408.35000
TD 189	416.36250	408.36250
TD 190	416.37500	408.37500
TD 191	416.38750	408.38750
TD 192	416.40000	408.40000
TD 193	416.41250	408.41250
TD 194	416.42500	408.42500
TD 195	416.43750	408.43750
TD 196	416.45000	408.45000
TD 197	416.46250	408.46250
TD 198	416.47500	408.47500
TD 199	416.48750	408.48750
TD 200	416.50000	408.50000
TD 201	416.51250	408.51250
TD 202	416.52500	408.52500
TD 203	416.53750	408.53750
TD 204	416.55000	408.55000
TD 205	416.56250	408.56250
TD 206	416.57500	408.57500
TD 207	416.58750	408.58750
TD 208	416.60000	408.60000
TD 209	416.61250	408.61250
TD 210	416.62500	408.62500
TD 211	416.63750	408.63750
TD 212	416.65000	408.65000
TD 213	416.66250	408.66250
TD 214	416.67500	408.67500
TD 215	416.68750	408.68750
TD 216	416.70000	408.70000
TD 217	416.71250	408.71250
TD 218	416.72500	408.72500
TD 219	416.73750	408.73750
TD 220	416.75000	408.75000
TD 221	416.76250	408.76250
TD 222	416.77500	408.77500
TD 223	416.78750	408.78750
TD 224	416.80000	408.80000
TD 225	416.81250	408.81250
TD 226	416.82500	408.82500
TD 227	416.83750	408.83750
TD 228	416.85000	408.85000
TD 229	416.86250	408.86250

<u>CHANNEL</u>	<u>BASE TX FREQ</u>	<u>MOBILE TX FREQ</u>
TD 230	416.87500	408.87500
TD 231	416.88750	408.88750
TD 232	416.90000	408.90000
TD 233	416.91250	408.91250
TD 234	416.92500	408.92500
TD 235	416.93750	408.93750
TD 236	416.95000	408.95000
TD 237	416.96250	408.96250
TD 238	416.97500	408.97500
TD 239	416.98750	408.98750
TD 240	417.00000	409.00000
TD 241	417.01250	409.01250
TD 242	417.02500	409.02500
TD 243	417.03750	409.03750
TD 244	417.05000	409.05000
TD 245	417.06250	409.06250
TD 246	417.07500	409.07500
TD 247	417.08750	409.08750
TD 248	417.10000	409.10000
TD 249	417.11250	409.11250
TD 250	417.12500	409.12500
TD 251	417.13750	409.13750
TD 252	417.15000	409.15000
TD 253	417.16250	409.16250
TD 254	417.17500	409.17500
TD 255	417.18750	409.18750
TD 256	417.20000	409.20000
TD 257	417.21250	409.21250
TD 258	417.22500	409.22500
TD 259	417.23750	409.23750
TD 260	417.25000	409.25000
TD 261	417.26250	409.26250
TD 262	417.27500	409.27500
TD 263	417.28750	409.28750
TD 264	417.30000	409.30000
TD 265	417.31250	409.31250
TD 266	417.32500	409.32500
TD 267	417.33750	409.33750
TD 268	417.35000	409.35000
TD 269	417.36250	409.36250
TD 270	417.37500	409.37500
TD 271	417.38750	409.38750
TD 272	417.40000	409.40000
TD 273	417.41250	409.41250
TD 274	417.42500	409.42500
TD 275	417.43750	409.43750
TD 276	417.45000	409.45000
TD 277	417.46250	409.46250
TD 278	417.47500	409.47500

<u>CHANNEL</u>	<u>BASE TX FREQ</u>	<u>MOBILE TX FREQ</u>
TD 279	417.48750	409.48750
TD 280	417.50000	409.50000
TD 281	417.51250	409.51250
TD 282	417.52500	409.52500
TD 283	417.53750	409.53750
TD 284	417.55000	409.55000
TD 285	417.56250	409.56250
TD 286	417.57500	409.57500
TD 287	417.58750	409.58750
TD 288	417.60000	409.60000
TD 289	417.61250	409.61250
TD 290	417.62500	409.62500
TD 291	417.63750	409.63750
TD 292	417.65000	409.65000
TD 293	417.66250	409.66250
TD 294	417.67500	409.67500
TD 295	417.68750	409.68750
TD 296	417.70000	409.70000
TD 297	417.71250	409.71250
TD 298	417.72500	409.72500
TD 299	417.73750	409.73750
TD 300	417.75000	409.75000
TD 301	417.76250	409.76250
TD 302	417.77500	409.77500
TD 303	417.78750	409.78750
TD 304	417.80000	409.80000
TD 305	417.81250	409.81250
TD 306	417.82500	409.82500
TD 307	417.83750	409.83750
TD 308	417.85000	409.85000
TD 309	417.86250	409.86250
TD 310	417.87500	409.87500
TD 311	417.88750	409.88750
TD 312	417.90000	409.90000
TD 313	417.91250	409.91250
TD 314	417.92500	409.92500
TD 315	417.93750	409.93750
TD 316	417.95000	409.95000
TD 317	417.96250	409.96250
TD 318	417.97500	409.97500
TD 319	417.98750	409.98750
TD 320	418.00000	410.00000
TD 321	418.01250	410.01250
TD 322	418.02500	410.02500
TD 323	418.03750	410.03750
TD 324	418.05000	410.05000
TD 325	418.06250	410.06250
TD 326	418.07500	410.07500
TD 327	418.08750	410.08750

<u>CHANNEL</u>	<u>BASE TX FREQ</u>	<u>MOBILE TX FREQ</u>
TD 328	418.10000	410.10000
TD 329	418.11250	410.11250
TD 330	418.12500	410.12500
TD 331	418.13750	410.13750
TD 332	418.15000	410.15000
TD 333	418.16250	410.16250
TD 334	418.17500	410.17500
TD 335	418.18750	410.18750
TD 336	418.20000	410.20000
TD 337	418.21250	410.21250
TD 338	418.22500	410.22500
TD 339	418.23750	410.23750
TD 340	418.25000	410.25000
TD 341	418.26250	410.26250
TD 342	418.27500	410.27500
TD 343	418.28750	410.28750
TD 344	418.30000	410.30000
TD 345	418.31250	410.31250
TD 346	418.32500	410.32500
TD 347	418.33750	410.33750
TD 348	418.35000	410.35000
TD 349	418.36250	410.36250
TD 350	418.37500	410.37500
TD 351	418.38750	410.38750
TD 352	418.40000	410.40000
TD 353	418.41250	410.41250
TD 354	418.42500	410.42500
TD 355	418.43750	410.43750
TD 356	418.45000	410.45000
TD 357	418.46250	410.46250
TD 358	418.47500	410.47500
TD 359	418.48750	410.48750
TD 360	418.50000	410.50000
TD 361	418.51250	410.51250
TD 362	418.52500	410.52500
TD 363	418.53750	410.53750
TD 364	418.55000	410.55000
TD 365	418.56250	410.56250
TD 366	418.57500	410.57500
TD 367	418.58750	410.58750
TD 368	418.60000	410.60000
TD 369	418.61250	410.61250
TD 370	418.62500	410.62500
TD 371	418.63750	410.63750
TD 372	418.65000	410.65000
TD 373	418.66250	410.66250
TD 374	418.67500	410.67500
TD 375	418.68750	410.68750
TD 376	418.70000	410.70000

<u>CHANNEL</u>	<u>BASE TX FREQ</u>	<u>MOBILE TX FREQ</u>
TD 377	418.71250	410.71250
TD 378	418.72500	410.72500
TD 379	418.73750	410.73750
TD 380	418.75000	410.75000
TD 381	418.76250	410.76250
TD 382	418.77500	410.77500
TD 383	418.78750	410.78750
TD 384	418.80000	410.80000
TD 385	418.81250	410.81250
TD 386	418.82500	410.82500
TD 387	418.83750	410.83750
TD 388	418.85000	410.85000
TD 389	418.86250	410.86250
TD 390	418.87500	410.87500
TD 391	418.88750	410.88750
TD 392	418.90000	410.90000
TD 393	418.91250	410.91250
TD 394	418.92500	410.92500
TD 395	418.93750	410.93750
TD 396	418.95000	410.95000
TD 397	418.96250	410.96250
TD 398	418.97500	410.97500
TD 399	418.98750	410.98750
TD 400	419.00000	411.00000
TD 401	419.01250	411.01250
TD 402	419.02500	411.02500
TD 403	419.03750	411.03750
TD 404	419.05000	411.05000
TD 405	419.06250	411.06250
TD 406	419.07500	411.07500
TD 407	419.08750	411.08750
TD 408	419.10000	411.10000
TD 409	419.11250	411.11250
TD 410	419.12500	411.12500
TD 411	419.13750	411.13750
TD 412	419.15000	411.15000
TD 413	419.16250	411.16250
TD 414	419.17500	411.17500
TD 415	419.18750	411.18750
TD 416	419.20000	411.20000
TD 417	419.21250	411.21250
TD 418	419.22500	411.22500
TD 419	419.23750	411.23750
TD 420	419.25000	411.25000
TD 421	419.26250	411.26250
TD 422	419.27500	411.27500
TD 423	419.28750	411.28750
TD 424	419.30000	411.30000
TD 425	419.31250	411.31250

<u>CHANNEL</u>	<u>BASE TX FREQ</u>	<u>MOBILE TX FREQ</u>
TD 426	419.32500	411.32500
TD 427	419.33750	411.33750
TD 428	419.35000	411.35000
TD 429	419.36250	411.36250
TD 430	419.37500	411.37500
TD 431	419.38750	411.38750
TD 432	419.40000	411.40000
TD 433	419.41250	411.41250
TD 434	419.42500	411.42500
TD 435	419.43750	411.43750
TD 436	419.45000	411.45000
TD 437	419.46250	411.46250
TD 438	419.47500	411.47500
TD 439	419.48750	411.48750

1.2.2 TDX BAND

<u>CHANNEL</u>	<u>FREQUENCY</u>
TDX 1	414.01250
TDX 2	414.02500
TDX 3	414.03750
TDX 4	414.05000
TDX 5	414.06250
TDX 6	414.07500
TDX 7	414.08750
TDX 8	414.10000

1.2.3 C BAND (25 kHz Channelling) (For reference only)

<u>CHANNEL</u>	<u>BASE TX FREQ</u>	<u>MOBILE TX FREQ</u>
C 1	455.32500	450.28750
C 2	455.35000	450.31250
C 3	455.37500	450.33750
C 4	455.40000	450.36250
C 5	455.42500	450.38750
C 6	455.45000	450.41250
C 7	455.47500	450.43750
C 8	455.50000	450.46250
C 9	455.52500	450.48750
C 10	455.55000	450.51250
C 11	455.57500	450.53750
C 12	455.60000	450.56250
C 13	455.62500	450.58750
C 14	455.65000	450.61250
C 15	455.67500	450.63750
C 16	455.70000	450.66250
C 17	455.72500	450.68750
C 18	455.75000	450.71250
C 19	455.77500	450.73750
C 20	455.80000	450.76250
C 21	455.82500	450.78750
C 22	455.85000	450.81250
C 23	455.87500	450.83750
C 24	455.90000	450.86250
C 25	455.92500	450.88750
C 26	455.95000	450.91250
C 27	455.97500	450.93750
C 28	456.00000	450.96250
C 29	456.02500	450.98750
C 30	456.05000	451.01250
C 31	456.07500	451.03750
C 32	456.10000	451.06250
C 33	456.12500	451.08750
C 34	456.15000	451.11250
C 35	456.17500	451.13750
C 36	456.20000	451.16250
C 37	456.22500	451.18750
C 38	456.25000	451.21250
C 39	456.27500	451.23750
C 40	456.30000	451.26250
C 41	456.32500	451.28750
C 42	456.35000	451.31250
C 43	456.37500	451.33750
C 44	456.40000	451.36250
C 45	456.42500	451.38750
C 46	456.45000	451.41250
C 47	456.47500	451.43750
C 48	456.50000	451.46250

<u>CHANNEL</u>	<u>BASE TX FREQ</u>	<u>MOBILE TX FREQ</u>
C 49	456.52500	451.48750
C 50	456.55000	451.51250
C 51	456.57500	451.53750
C 52	456.60000	451.56250
C 53	456.62500	451.58750
C 54	456.65000	451.61250
C 55	456.67500	451.63750
C 56	456.70000	451.66250
C 57	456.72500	451.68750
C 58	456.75000	451.71250
C 59	456.77500	451.73750
C 60	456.80000	451.76250
C 61	456.82500	451.78750
C 62	456.85000	451.81250
C 63	456.87500	451.83750
C 64	456.90000	451.86250
C 65	456.92500	451.88750
C 66	456.95000	451.91250
C 67	456.97500	451.93750
C 68	457.00000	451.96250
C 69	457.02500	451.98750
C 70	457.05000	452.01250
C 71	457.07500	452.03750
C 72	457.10000	452.06250
C 73	457.12500	452.08750
C 74	457.15000	452.11250
C 75	457.17500	452.13750
C 76	457.20000	452.16250
C 77	457.22500	452.18750
C 78	457.25000	452.21250
C 79	457.27500	452.23750
C 80	457.30000	452.26250
C 81	457.32500	452.28750
C 82	457.35000	452.31250
C 83	457.37500	452.33750
C 84	457.40000	452.36250
C 85	457.42500	452.38750
C 86	457.45000	452.41250
C 87	457.47500	452.43750
C 88	457.50000	452.46250
C 89	457.52500	452.48750
C 90	457.55000	452.51250
C 91	457.57500	452.53750
C 92	457.60000	452.56250
C 93	457.62500	452.58750
C 94	457.65000	452.61250
C 95	457.67500	452.63750
C 96	457.70000	452.66250
C 97	457.72500	452.68750

<u>CHANNEL</u>	<u>BASE TX FREQ</u>	<u>MOBILE TX FREQ</u>
C 98	457.75000	452.71250
C 99	457.77500	452.73750
C 100	457.80000	452.76250
C 101	457.82500	452.78750
C 102	457.85000	452.81250
C 103	457.87500	452.83750
C 104	457.90000	452.86250
C 105	457.92500	452.88750
C 106	457.95000	452.91250
C 107	457.97500	452.93750
C 108	458.00000	452.96250
C 109	458.02500	452.98750
C 110	458.05000	453.01250
C 111	458.07500	453.03750
C 112	458.10000	453.06250
C 113	458.12500	453.08750
C 114	458.15000	453.11250
C 115	458.17500	453.13750
C 116	458.20000	453.16250
C 117	458.22500	453.18750
C 118	458.25000	453.21250
C 119	458.27500	453.23750
C 120	458.30000	453.26250
C 121	458.32500	453.28750

1.2.4 CX BAND (25 kHz Channelling) (For reference only)

<u>CHANNEL</u>	<u>FREQUENCY</u>
CX 1	449.76250
CX 2	449.78750
CX 3	449.81250
CX 4	449.83750
CX 5	449.86250
CX 6	449.88750
CX 7	449.91250
CX 8	449.93750
CX 9	449.96250
CX 10	449.98750
CX 11	453.31250
CX 12	453.33750
CX 13	453.36250
CX 14	453.38750
CX 15	453.41250
CX 16	453.43750
CX 17	453.46250
CX 18	453.48750
CX 19	453.51250
CX 20	453.53750
CX 21	453.56250
CX 22	453.58750
CX 23	453.61250
CX 24	454.98750
CX 25	455.01250
CX 26	455.03750
CX 27	455.06250
CX 28	455.08750
CX 29	455.11250
CX 30	455.13750
CX 31	455.16250
CX 32	455.18750
CX 33	455.21250
CX 34	455.23750
CX 35	455.26250
CX 36	455.28750

1.2.5 CN BAND (12.5 kHz Channelling)

Band	Structure	EIRP	Emission	Channel Spacing	Remarks
'CN'				12.5 KHz	
	<div style="border: 1px solid black; padding: 5px; width: fit-content;"> CNX1 Simplex CNX20 </div>	449.750 MHz 450.000 MHz	Repeater 17 dBW Mobile 14 dBW		
	<div style="border: 1px solid black; padding: 5px; width: fit-content;"> CN1 Mobile Tx CN242 CNX21 Simplex CNX46 </div>	450.275 MHz 453.29375 MHz 453.30625 MHz 453.6250 MHz			
	<div style="border: 1px solid black; padding: 5px; width: fit-content;"> CNX47 Simplex CNX73 CN1 Base Tx CN242 </div>	454.975 MHz 455.30625 MHz 455.31875 MHz 458.3375 MHz			

<u>CHANNEL</u>	<u>BASE TX FREQ</u>	<u>MOBILE TX FREQ</u>
CN 1	455.31875	450.28125
CN 2	455.33125	450.29375
CN 3	455.34375	450.30625
CN 4	455.35625	450.31875
CN 5	455.36875	450.33125
CN 6	455.38125	450.34375
CN 7	455.39375	450.35625
CN 8	455.40625	450.36875
CN 9	455.41875	450.38125
CN 10	455.43125	450.39375
CN 11	455.44375	450.40625
CN 12	455.45625	450.41875
CN 13	455.46875	450.43125
CN 14	455.48125	450.44375
CN 15	455.49375	450.45625
CN 16	455.50625	450.46875
CN 17	455.51875	450.48125
CN 18	455.53125	450.49375
CN 19	455.54375	450.50625
CN 20	455.55625	450.51875
CN 21	455.56875	450.53125

<u>CHANNEL</u>	<u>BASE TX FREQ</u>	<u>MOBILE TX FREQ</u>
CN 22	455.58125	450.54375
CN 23	455.59375	450.55625
CN 24	455.60625	450.56875
CN 25	455.61875	450.58125
CN 26	455.63125	450.59375
CN 27	455.64375	450.60625
CN 28	455.65625	450.61875
CN 29	455.66875	450.63125
CN 30	455.68125	450.64375
CN 31	455.69375	450.65625
CN 32	455.70625	450.66875
CN 33	455.71875	450.68125
CN 34	455.73125	450.69375
CN 35	455.74375	450.70625
CN 36	455.75625	450.71875
CN 37	455.76875	450.73125
CN 38	455.78125	450.74375
CN 39	455.79375	450.75625
CN 40	455.80625	450.76875
CN 41	455.81875	450.78125
CN 42	455.83125	450.79375
CN 43	455.84375	450.80625
CN 44	455.85625	450.81875
CN 45	455.86875	450.83125
CN 46	455.88125	450.84375
CN 47	455.89375	450.85625
CN 48	455.90625	450.86875
CN 49	455.91875	450.88125
CN 50	455.93125	450.89375
CN 51	455.94375	450.90625
CN 52	455.95625	450.91875
CN 53	455.96875	450.93125
CN 54	455.98125	450.94375
CN 55	455.99375	450.95625
CN 56	456.00625	450.96875
CN 57	456.01875	450.98125
CN 58	456.03125	450.99375
CN 59	456.04375	451.00625
CN 60	456.05625	451.01875
CN 61	456.06875	451.03125
CN 62	456.08125	451.04375
CN 63	456.09375	451.05625
CN 64	456.10625	451.06875
CN 65	456.11875	451.08125
CN 66	456.13125	451.09375
CN 67	456.14375	451.10625
CN 68	456.15625	451.11875
CN 69	456.16875	451.13125
CN 70	456.18125	451.14375

<u>CHANNEL</u>	<u>BASE TX FREQ</u>	<u>MOBILE TX FREQ</u>
CN 71	456.19375	451.15625
CN 72	456.20625	451.16875
CN 73	456.21875	451.18125
CN 74	456.23125	451.19375
CN 75	456.24375	451.20625
CN 76	456.25625	451.21875
CN 77	456.26875	451.23125
CN 78	456.28125	451.24375
CN 79	456.29375	451.25625
CN 80	456.30625	451.26875
CN 81	456.31875	451.28125
CN 82	456.33125	451.29375
CN 83	456.34375	451.30625
CN 84	456.35625	451.31875
CN 85	456.36875	451.33125
CN 86	456.38125	451.34375
CN 87	456.39375	451.35625
CN 88	456.40625	451.36875
CN 89	456.41875	451.38125
CN 90	456.43125	451.39375
CN 91	456.44375	451.40625
CN 92	456.45625	451.41875
CN 93	456.46875	451.43125
CN 94	456.48125	451.44375
CN 95	456.49375	451.45625
CN 96	456.50625	451.46875
CN 97	456.51875	451.48125
CN 98	456.53125	451.49375
CN 99	456.54375	451.50625
CN 100	456.55625	451.51875
CN 101	456.56875	451.53125
CN 102	456.58125	451.54375
CN 103	456.59375	451.55625
CN 104	456.60625	451.56875
CN 105	456.61875	451.58125
CN 106	456.63125	451.59375
CN 107	456.64375	451.60625
CN 108	456.65625	451.61875
CN 109	456.66875	451.63125
CN 110	456.68125	451.64375
CN 111	456.69375	451.65625
CN 112	456.70625	451.66875
CN 113	456.71875	451.68125
CN 114	456.73125	451.69375
CN 115	456.74375	451.70625
CN 116	456.75625	451.71875
CN 117	456.76875	451.73125
CN 118	456.78125	451.74375
CN 119	456.79375	451.75625

<u>CHANNEL</u>	<u>BASE TX FREQ</u>	<u>MOBILE TX FREQ</u>
CN 120	456.80625	451.76875
CN 121	456.81875	451.78125
CN 122	456.83125	451.79375
CN 123	456.84375	451.80625
CN 124	456.85625	451.81875
CN 125	456.86875	451.83125
CN 126	456.88125	451.84375
CN 127	456.89375	451.85625
CN 128	456.90625	451.86875
CN 129	456.91875	451.88125
CN 130	456.93125	451.89375
CN 131	456.94375	451.90625
CN 132	456.95625	451.91875
CN 133	456.96875	451.93125
CN 134	456.98125	451.94375
CN 135	456.99375	451.95625
CN 136	457.00625	451.96875
CN 137	457.01875	451.98125
CN 138	457.03125	451.99375
CN 139	457.04375	452.00625
CN 140	457.05625	452.01875
CN 141	457.06875	452.03125
CN 142	457.08125	452.04375
CN 143	457.09375	452.05625
CN 144	457.10625	452.06875
CN 145	457.11875	452.08125
CN 146	457.13125	452.09375
CN 147	457.14375	452.10625
CN 148	457.15625	452.11875
CN 149	457.16875	452.13125
CN 150	457.18125	452.14375
CN 151	457.19375	452.15625
CN 152	457.20625	452.16875
CN 153	457.21875	452.18125
CN 154	457.23125	452.19375
CN 155	457.24375	452.20625
CN 156	457.25625	452.21875
CN 157	457.26875	452.23125
CN 158	457.28125	452.24375
CN 159	457.29375	452.25625
CN 160	457.30625	452.26875
CN 161	457.31875	452.28125
CN 162	457.33125	452.29375
CN 163	457.34375	452.30625
CN 164	457.35625	452.31875
CN 165	457.36875	452.33125
CN 166	457.38125	452.34375
CN 167	457.39375	452.35625
CN 168	457.40625	452.36875

<u>CHANNEL</u>	<u>BASE TX FREQ</u>	<u>MOBILE TX FREQ</u>
CN 169	457.41875	452.38125
CN 170	457.43125	452.39375
CN 171	457.44375	452.40625
CN 172	457.45625	452.41875
CN 173	457.46875	452.43125
CN 174	457.48125	452.44375
CN 175	457.49375	452.45625
CN 176	457.50625	452.46875
CN 177	457.51875	452.48125
CN 178	457.53125	452.49375
CN 179	457.54375	452.50625
CN 180	457.55625	452.51875
CN 181	457.56875	452.53125
CN 182	457.58125	452.54375
CN 183	457.59375	452.55625
CN 184	457.60625	452.56875
CN 185	457.61875	452.58125
CN 186	457.63125	452.59375
CN 187	457.64375	452.60625
CN 188	457.65625	452.61875
CN 189	457.66875	452.63125
CN 190	457.68125	452.64375
CN 191	457.69375	452.65625
CN 192	457.70625	452.66875
CN 193	457.71875	452.68125
CN 194	457.73125	452.69375
CN 195	457.74375	452.70625
CN 196	457.75625	452.71875
CN 197	457.76875	452.73125
CN 198	457.78125	452.74375
CN 199	457.79375	452.75625
CN 200	457.80625	452.76875
CN 201	457.81875	452.78125
CN 202	457.83125	452.79375
CN 203	457.84375	452.80625
CN 204	457.85625	452.81875
CN 205	457.86875	452.83125
CN 206	457.88125	452.84375
CN 207	457.89375	452.85625
CN 208	457.90625	452.86875
CN 209	457.91875	452.88125
CN 210	457.93125	452.89375
CN 211	457.94375	452.90625
CN 212	457.95625	452.91875
CN 213	457.96875	452.93125
CN 214	457.98125	452.94375
CN 215	457.99375	452.95625
CN 216	458.00625	452.96875
CN 217	458.01875	452.98125

<u>CHANNEL</u>	<u>BASE TX FREQ</u>	<u>MOBILE TX FREQ</u>
CN 218	458.03125	452.99375
CN 219	458.04375	453.00625
CN 220	458.05625	453.01875
CN 221	458.06875	453.03125
CN 222	458.08125	453.04375
CN 223	458.09375	453.05625
CN 224	458.10625	453.06875
CN 225	458.11875	453.08125
CN 226	458.13125	453.09375
CN 227	458.14375	453.10625
CN 228	458.15625	453.11875
CN 229	458.16875	453.13125
CN 230	458.18125	453.14375
CN 231	458.19375	453.15625
CN 232	458.20625	453.16875
CN 233	458.21875	453.18125
CN 234	458.23125	453.19375
CN 235	458.24375	453.20625
CN 236	458.25625	453.21875
CN 237	458.26875	453.23125
CN 238	458.28125	453.24375
CN 239	458.29375	453.25625
CN 240	458.30625	453.26875
CN 241	458.31875	453.28125
CN 242	458.33125	453.29375

1.2.6 CNX BAND (12.5 kHz Channelling)

<u>CHANNEL</u>	<u>FREQUENCY</u>
CNX 1	449.75625
CNX 2	449.76875
CNX 3	449.78125
CNX 4	449.79375
CNX 5	449.80625
CNX 6	449.81875
CNX 7	449.83125
CNX 8	449.84375
CNX 9	449.85625
CNX 10	449.86875
CNX 11	449.88125
CNX 12	449.89375
CNX 13	449.90625
CNX 14	449.91875
CNX 15	449.93125
CNX 16	449.94375
CNX 17	449.95625
CNX 18	449.96875
CNX 19	449.98125
CNX 20	449.99375
CNX 21	453.30625
CNX 22	453.31875
CNX 23	453.33125
CNX 24	453.34375
CNX 25	453.35625
CNX 26	453.36875
CNX 27	453.38125
CNX 28	453.39375
CNX 29	453.40625
CNX 30	453.41875
CNX 31	453.43125
CNX 32	453.44375
CNX 33	453.45625
CNX 34	453.46875
CNX 35	453.48125
CNX 36	453.49375
CNX 37	453.50625
CNX 38	453.51875
CNX 39	453.53125
CNX 40	453.54375
CNX 41	453.55625
CNX 42	453.56875
CNX 43	453.58125
CNX 44	453.59375
CNX 45	453.60625
CNX 46	453.61875

<u>CHANNEL</u>	<u>FREQUENCY</u>
CNX 47	454.98125
CNX 48	454.99375
CNX 49	455.00625
CNX 50	455.01875
CNX 51	455.03125
CNX 52	455.04375
CNX 53	455.05625
CNX 54	455.06875
CNX 55	455.08125
CNX 56	455.09375
CNX 57	455.10625
CNX 58	455.11875
CNX 59	455.13125
CNX 60	455.14375
CNX 61	455.15625
CNX 62	455.16875
CNX 63	455.18125
CNX 64	455.19375
CNX 65	455.20625
CNX 66	455.21875
CNX 67	455.23125
CNX 68	455.24375
CNX 69	455.25625
CNX 70	455.26875
CNX 71	455.28125
CNX 72	455.29375
CNX 73	455.30625

1.2.7 D BAND (25 kHz Channelling) (For reference only)

<u>CHANNEL</u>	<u>BASE TX FREQ</u>	<u>MOBILE TX FREQ</u>
D 1	461.82500	467.01250
D 2	461.85000	467.03750
D 3	461.87500	467.06250
D 4	461.90000	467.08750
D 5	461.92500	467.11250
D 6	461.95000	467.13750
D 7	461.97500	467.16250
D 8	462.00000	467.18750
D 9	462.02500	467.21250
D 10	462.05000	467.23750
D 11	462.07500	467.26250
D 12	462.10000	467.28750
D 13	462.12500	467.31250
D 14	462.15000	467.33750
D 15	462.17500	467.36250
D 16	462.20000	467.38750
D 17	462.22500	467.41250
D 18	462.25000	467.43750
D 19	462.27500	467.46250
D 20	462.30000	467.48750
D 21	462.32500	467.51250
D 22	462.35000	467.53750
D 23	462.37500	467.56250
D 24	462.40000	467.58750
D 25	462.42500	467.61250
D 26	462.45000	467.63750
D 27	462.47500	467.66250
D 28	462.50000	467.68750
D 29	462.52500	467.71250
D 30	462.55000	467.73750
D 31	462.57500	467.76250
D 32	462.60000	467.78750
D 33	462.62500	467.81250
D 34	462.65000	467.83750
D 35	462.67500	467.86250
D 36	462.70000	467.88750
D 37	462.72500	467.91250
D 38	462.75000	467.93750
D 39	462.77500	467.96250
D 40	462.80000	467.98750
D 41	462.82500	468.01250
D 42	462.85000	468.03750
D 43	462.87500	468.06250
D 44	462.90000	468.08750
D 45	462.92500	468.11250
D 46	462.95000	468.13750
D 47	462.97500	468.16250
D 48	463.00000	468.18750

<u>CHANNEL</u>	<u>BASE TX FREQ</u>	<u>MOBILE TX FREQ</u>
D 49	463.02500	468.21250
D 50	463.05000	468.23750
D 51	463.07500	468.26250
D 52	463.10000	468.28750
D 53	463.12500	468.31250
D 54	463.15000	468.33750
D 55	463.17500	468.36250
D 56	463.20000	468.38750
D 57	463.22500	468.41250
D 58	463.25000	468.43750
D 59	463.27500	468.46250
D 60	463.30000	468.48750
D 61	463.32500	468.51250
D 62	463.35000	468.53750
D 63	463.37500	468.56250
D 64	463.40000	468.58750
D 65	463.42500	468.61250
D 66	463.45000	468.63750
D 67	463.47500	468.66250
D 68	463.50000	468.68750
D 69	463.52500	468.71250
D 70	463.55000	468.73750
D 71	463.57500	468.76250
D 72	463.60000	468.78750
D 73	463.62500	468.81250
D 74	463.65000	468.83750
D 75	463.67500	468.86250
D 76	463.70000	468.88750
D 77	463.72500	468.91250
D 78	463.75000	468.93750
D 79	463.77500	468.96250
D 80	463.80000	468.98750
D 81	463.82500	469.01250
D 82	463.85000	469.03750
D 83	463.87500	469.06250
D 84	463.90000	469.08750
D 85	463.92500	469.11250
D 86	463.95000	469.13750
D 87	463.97500	469.16250
D 88	464.00000	469.18750
D 89	464.02500	469.21250
D 90	464.05000	469.23750
D 91	464.07500	469.26250
D 92	464.10000	469.28750
D 93	464.12500	469.31250
D 94	464.15000	469.33750
D 95	464.17500	469.36250
D 96	464.20000	469.38750
D 97	464.22500	469.41250

<u>CHANNEL</u>	<u>BASE TX FREQ</u>	<u>MOBILE TX FREQ</u>
D 98	464.25000	469.43750
D 99	464.27500	469.46250
D 100	464.30000	469.48750
D 101	464.32500	469.51250
D 102	464.35000	469.53750
D 103	464.37500	469.56250
D 104	464.40000	469.58750
D 105	464.42500	469.61250
D 106	464.45000	469.63750
D 107	464.47500	469.66250
D 108	464.50000	469.68750
D 109	464.52500	469.71250
D 110	464.55000	469.73750
D 111	464.57500	469.76250
D 112	464.60000	469.78750
D 113	464.62500	469.81250
D 114	464.65000	469.83750
D 115	464.67500	469.86250
D 116	464.70000	469.88750
D 117	464.72500	469.91250
D 118	464.75000	469.93750
D 119	464.77500	469.96250
D 120	464.80000	469.98750

1.2.8 DX BAND (25 kHz Channelling) (For reference only)

<u>CHANNEL</u>	<u>FREQUENCY</u>
DX 1	458.35000
DX 2	458.37500
DX 3	458.40000
DX 4	458.42500
DX 5	458.45000
DX 6	458.47500
DX 7	458.50000
DX 8	458.52500
DX 12	458.62500
DX 13	458.65000
DX 14	461.48750
DX 15	461.51250
DX 16	461.53750
DX 17	461.56250
DX 18	461.58750
DX 19	461.61250
DX 20	461.63750
DX 21	461.66250
DX 22	461.68750
DX 23	461.71250
DX 24	461.73750
DX 25	461.76250
DX 26	461.78750
DX 27	464.82500
DX 28	464.85000
DX 29	464.87500
DX 30	464.90000
DX 31	464.92500
DX 32	464.95000
DX 33	464.97500
DX 34	465.00000
DX 35	465.02500
DX 36	465.05000
DX 37	465.07500
DX 38	465.10000
DX 39	465.12500
DX 40	465.15000
DX 41	465.17500
DX 42	466.68750
DX 43	466.71250
DX 44	466.73750
DX 45	466.76250
DX 46	466.78750

<u>CHANNEL</u>	<u>FREQUENCY</u>
DX 49	466.86250
DX 50	466.88750
DX 51	466.91250
DX 52	466.93750
DX 53	466.96250

1.2.9 DN BAND (12.5 kHz Channelling)

Band	Structure	EIRP	Emission	Channel Spacing	Remarks
'DN'				12.5 kHz	
	458.3375 MHz	Repeater 17 dBW	FM		
	<div style="border: 1px solid black; padding: 5px; width: fit-content;"> DNX1 Simplex DNX16 </div>	Mobile 14 dBW			
	458.5375 MHz				
	458.6125 MHz				
	<div style="border: 1px solid black; padding: 5px; width: fit-content;"> DNX17 Simplex DNX20 </div>				
	458.6625 MHz				
	461.475 MHz				
	<div style="border: 1px solid black; padding: 5px; width: fit-content;"> DNX21 Simplex DNX47 </div>				
	461.80625 MHz				
	<div style="border: 1px solid black; padding: 5px; width: fit-content;"> DN1 Base Tx </div>				
	461.81875 MHz				
	<div style="border: 1px solid black; padding: 5px; width: fit-content;"> DN240 DNX48 </div>				
	464.80625 MHz				
	<div style="border: 1px solid black; padding: 5px; width: fit-content;"> Simplex DNX77 </div>				
	464.81875 MHz				
	465.1875 MHz				
	466.675 MHz				
	<div style="border: 1px solid black; padding: 5px; width: fit-content;"> DNX78 Simplex DNX87 </div>				
	466.800 MHz				
	466.850 MHz				
	<div style="border: 1px solid black; padding: 5px; width: fit-content;"> DNX88 Simplex DNX99 </div>				
	466.99375 MHz				
	<div style="border: 1px solid black; padding: 5px; width: fit-content;"> DN1 Mobile Tx DN240 </div>				
	467.00625 MHz				
	470.000 MHz				

<u>CHANNEL</u>	<u>BASE TX FREQ</u>	<u>MOBILE TX FREQ</u>
DN 1	461.81875	467.00625
DN 2	461.83125	467.01875
DN 3	461.84375	467.03125
DN 4	461.85625	467.04375
DN 5	461.86875	467.05625
DN 6	461.88125	467.06875

<u>CHANNEL</u>	<u>BASE TX FREQ</u>	<u>MOBILE TX FREQ</u>
DN 7	461.89375	467.08125
DN 8	461.90625	467.09375
DN 9	461.91875	467.10625
DN 10	461.93125	467.11875
DN 11	461.94375	467.13125
DN 12	461.95625	467.14375
DN 13	461.96875	467.15625
DN 14	461.98125	467.16875
DN 15	461.99375	467.18125
DN 16	462.00625	467.19375
DN 17	462.01875	467.20625
DN 18	462.03125	467.21875
DN 19	462.04375	467.23125
DN 20	462.05625	467.24375
DN 21	462.06875	467.25625
DN 22	462.08125	467.26875
DN 23	462.09375	467.28125
DN 24	462.10625	467.29375
DN 25	462.11875	467.30625
DN 26	462.13125	467.31875
DN 27	462.14375	467.33125
DN 28	462.15625	467.34375
DN 29	462.16875	467.35625
DN 30	462.18125	467.36875
DN 31	462.19375	467.38125
DN 32	462.20625	467.39375
DN 33	462.21875	467.40625
DN 34	462.23125	467.41875
DN 35	462.24375	467.43125
DN 36	462.25625	467.44375
DN 37	462.26875	467.45625
DN 38	462.28125	467.46875
DN 39	462.29375	467.48125
DN 40	462.30625	467.49375
DN 41	462.31875	467.50625
DN 42	462.33125	467.51875
DN 43	462.34375	467.53125
DN 44	462.35625	467.54375
DN 45	462.36875	467.55625
DN 46	462.38125	467.56875
DN 47	462.39375	467.58125
DN 48	462.40625	467.59375
DN 49	462.41875	467.60625
DN 50	462.43125	467.61875
DN 51	462.44375	467.63125
DN 52	462.45625	467.64375
DN 53	462.46875	467.65625
DN 54	462.48125	467.66875
DN 55	462.49375	467.68125

<u>CHANNEL</u>	<u>BASE TX FREQ</u>	<u>MOBILE TX FREQ</u>
DN 56	462.50625	467.69375
DN 57	462.51875	467.70625
DN 58	462.53125	467.71875
DN 59	462.54375	467.73125
DN 60	462.55625	467.74375
DN 61	462.56875	467.75625
DN 62	462.58125	467.76875
DN 63	462.59375	467.78125
DN 64	462.60625	467.79375
DN 65	462.61875	467.80625
DN 66	462.63125	467.81875
DN 67	462.64375	467.83125
DN 68	462.65625	467.84375
DN 69	462.66875	467.85625
DN 70	462.68125	467.86875
DN 71	462.69375	467.88125
DN 72	462.70625	467.89375
DN 73	462.71875	467.90625
DN 74	462.73125	467.91875
DN 75	462.74375	467.93125
DN 76	462.75625	467.94375
DN 77	462.76875	467.95625
DN 78	462.78125	467.96875
DN 79	462.79375	467.98125
DN 80	462.80625	467.99375
DN 81	462.81875	468.00625
DN 82	462.83125	468.01875
DN 83	462.84375	468.03125
DN 84	462.85625	468.04375
DN 85	462.86875	468.05625
DN 86	462.88125	468.06875
DN 87	462.89375	468.08125
DN 88	462.90625	468.09375
DN 89	462.91875	468.10625
DN 90	462.93125	468.11875
DN 91	462.94375	468.13125
DN 92	462.95625	468.14375
DN 93	462.96875	468.15625
DN 94	462.98125	468.16875
DN 95	462.99375	468.18125
DN 96	463.00625	468.19375
DN 97	463.01875	468.20625
DN 98	463.03125	468.21875
DN 99	463.04375	468.23125
DN 100	463.05625	468.24375
DN 101	463.06875	468.25625
DN 102	463.08125	468.26875
DN 103	463.09375	468.28125
DN 104	463.10625	468.29375

<u>CHANNEL</u>	<u>BASE TX FREQ</u>	<u>MOBILE TX FREQ</u>
DN 105	463.11875	468.30625
DN 106	463.13125	468.31875
DN 107	463.14375	468.33125
DN 108	463.15625	468.34375
DN 109	463.16875	468.35625
DN 110	463.18125	468.36875
DN 111	463.19375	468.38125
DN 112	463.20625	468.39375
DN 113	463.21875	468.40625
DN 114	463.23125	468.41875
DN 115	463.24375	468.43125
DN 116	463.25625	468.44375
DN 117	463.26875	468.45625
DN 118	463.28125	468.46875
DN 119	463.29375	468.48125
DN 120	463.30625	468.49375
DN 121	463.31875	468.50625
DN 122	463.33125	468.51875
DN 123	463.34375	468.53125
DN 124	463.35625	468.54375
DN 125	463.36875	468.55625
DN 126	463.38125	468.56875
DN 127	463.39375	468.58125
DN 128	463.40625	468.59375
DN 129	463.41875	468.60625
DN 130	463.43125	468.61875
DN 131	463.44375	468.63125
DN 132	463.45625	468.64375
DN 133	463.46875	468.65625
DN 134	463.48125	468.66875
DN 135	463.49375	468.68125
DN 136	463.50625	468.69375
DN 137	463.51875	468.70625
DN 138	463.53125	468.71875
DN 139	463.54375	468.73125
DN 140	463.55625	468.74375
DN 141	463.56875	468.75625
DN 142	463.58125	468.76875
DN 143	463.59375	468.78125
DN 144	463.60625	468.79375
DN 145	463.61875	468.80625
DN 146	463.63125	468.81875
DN 147	463.64375	468.83125
DN 148	463.65625	468.84375
DN 149	463.66875	468.85625
DN 150	463.68125	468.86875
DN 151	463.69375	468.88125
DN 152	463.70625	468.89375
DN 153	463.71875	468.90625

<u>CHANNEL</u>	<u>BASE TX FREQ</u>	<u>MOBILE TX FREQ</u>
DN 154	463.73125	468.91875
DN 155	463.74375	468.93125
DN 156	463.75625	468.94375
DN 157	463.76875	468.95625
DN 158	463.78125	468.96875
DN 159	463.79375	468.98125
DN 160	463.80625	468.99375
DN 161	463.81875	469.00625
DN 162	463.83125	469.01875
DN 163	463.84375	469.03125
DN 164	463.85625	469.04375
DN 165	463.86875	469.05625
DN 166	463.88125	469.06875
DN 167	463.89375	469.08125
DN 168	463.90625	469.09375
DN 169	463.91875	469.10625
DN 170	463.93125	469.11875
DN 171	463.94375	469.13125
DN 172	463.95625	469.14375
DN 173	463.96875	469.15625
DN 174	463.98125	469.16875
DN 175	463.99375	469.18125
DN 176	464.00625	469.19375
DN 177	464.01875	469.20625
DN 178	464.03125	469.21875
DN 179	464.04375	469.23125
DN 180	464.05625	469.24375
DN 181	464.06875	469.25625
DN 182	464.08125	469.26875
DN 183	464.09375	469.28125
DN 184	464.10625	469.29375
DN 185	464.11875	469.30625
DN 186	464.13125	469.31875
DN 187	464.14375	469.33125
DN 188	464.15625	469.34375
DN 189	464.16875	469.35625
DN 190	464.18125	469.36875
DN 191	464.19375	469.38125
DN 192	464.20625	469.39375
DN 193	464.21875	469.40625
DN 194	464.23125	469.41875
DN 195	464.24375	469.43125
DN 196	464.25625	469.44375
DN 197	464.26875	469.45625
DN 198	464.28125	469.46875
DN 199	464.29375	469.48125
DN 200	464.30625	469.49375
DN 201	464.31875	469.50625
DN 202	464.33125	469.51875

<u>CHANNEL</u>	<u>BASE TX FREQ</u>	<u>MOBILE TX FREQ</u>
DN 203	464.34375	469.53125
DN 204	464.35625	469.54375
DN 205	464.36875	469.55625
DN 206	464.38125	469.56875
DN 207	464.39375	469.58125
DN 208	464.40625	469.59375
DN 209	464.41875	469.60625
DN 210	464.43125	469.61875
DN 211	464.44375	469.63125
DN 212	464.45625	469.64375
DN 213	464.46875	469.65625
DN 214	464.48125	469.66875
DN 215	464.49375	469.68125
DN 216	464.50625	469.69375
DN 217	464.51875	469.70625
DN 218	464.53125	469.71875
DN 219	464.54375	469.73125
DN 220	464.55625	469.74375
DN 221	464.56875	469.75625
DN 222	464.58125	469.76875
DN 223	464.59375	469.78125
DN 224	464.60625	469.79375
DN 225	464.61875	469.80625
DN 226	464.63125	469.81875
DN 227	464.64375	469.83125
DN 228	464.65625	469.84375
DN 229	464.66875	469.85625
DN 230	464.68125	469.86875
DN 231	464.69375	469.88125
DN 232	464.70625	469.89375
DN 233	464.71875	469.90625
DN 234	464.73125	469.91875
DN 235	464.74375	469.93125
DN 236	464.75625	469.94375
DN 237	464.76875	469.95625
DN 238	464.78125	469.96875
DN 239	464.79375	469.98125
DN 240	464.80625	469.99375

1.2.10 DNX BAND (12.5 kHz Channelling)

<u>CHANNEL</u>	<u>FREQUENCY</u>
DNX 1	458.34375
DNX 2	458.35625
DNX 3	458.36875
DNX 4	458.38125
DNX 5	458.39375
DNX 6	458.40625
DNX 7	458.41875
DNX 8	458.43125
DNX 9	458.44375
DNX 10	458.45625
DNX 11	458.46875
DNX 12	458.48125
DNX 13	458.49375
DNX 14	458.50625
DNX 15	458.51875
DNX 16	458.53125
DNX 17	458.61875
DNX 18	458.63125
DNX 19	458.64375
DNX 20	458.65625
DNX 21	461.48125
DNX 22	461.49375
DNX 23	461.50625
DNX 24	461.51875
DNX 25	461.53125
DNX 26	461.54375
DNX 27	461.55625
DNX 28	461.56875
DNX 29	461.58125
DNX 30	461.59375
DNX 31	461.60625
DNX 32	461.61875
DNX 33	461.63125
DNX 34	461.64375
DNX 35	461.65625
DNX 36	461.66875
DNX 37	461.68125
DNX 38	461.69375
DNX 39	461.70625
DNX 40	461.71875
DNX 41	461.73125
DNX 42	461.74375
DNX 43	461.75625
DNX 44	461.76875
DNX 45	461.78125
DNX 46	461.79375

<u>CHANNEL</u>	<u>FREQUENCY</u>
DNX 47	461.80625
DNX 48	464.81875
DNX 49	464.83125
DNX 50	464.84375
DNX 51	464.85625
DNX 52	464.86875
DNX 53	464.88125
DNX 54	464.89375
DNX 55	464.90625
DNX 56	464.91875
DNX 57	464.93125
DNX 58	464.94375
DNX 59	464.95625
DNX 60	464.96875
DNX 61	464.98125
DNX 62	464.99375
DNX 63	465.00625
DNX 64	465.01875
DNX 65	465.03125
DNX 66	465.04375
DNX 67	465.05625
DNX 68	465.06875
DNX 69	465.08125
DNX 70	465.09375
DNX 71	465.10625
DNX 72	465.11875
DNX 73	465.13125
DNX 74	465.14375
DNX 75	465.15625
DNX 76	465.16875
DNX 77	465.18125
DNX 78	466.68125
DNX 79	466.69375
DNX 80	466.70625
DNX 81	466.71875
DNX 82	466.73125
DNX 83	466.74375
DNX 84	466.75625
DNX 85	466.76875
DNX 86	466.78125
DNX 87	466.79375
DNX 88	466.85625
DNX 89	466.86875
DNX 90	466.88125
DNX 91	466.89375
DNX 92	466.90625

<u>CHANNEL</u>	<u>FREQUENCY</u>
DNX 93	466.91875
DNX 94	466.93125
DNX 95	466.94375
DNX 96	466.95625
DNX 97	466.96875
DNX 98	466.98125
DNX 99	466.99375

1.2.11 F BAND (25 kHz Channelling) (For reference only)

<u>CHANNEL</u>	<u>BASE TX FREQ</u>	<u>MOBILE TX FREQ</u>
F 1	478.00000	472.01250
F 2	478.02500	472.03750
F 3	478.05000	472.06250
F 4	478.07500	472.08750
F 5	478.10000	472.11250
F 6	478.12500	472.13750
F 7	478.15000	472.16250
F 8	478.17500	472.18750
F 9	478.20000	472.21250
F 10	478.22500	472.23750
F 11	478.25000	472.26250
F 12	478.27500	472.28750
F 13	478.30000	472.31250
F 14	478.32500	472.33750
F 15	478.35000	472.36250
F 16	478.37500	472.38750
F 17	478.40000	472.41250
F 18	478.42500	472.43750
F 19	478.45000	472.46250
F 20	478.47500	472.48750
F 21	478.50000	472.51250
F 22	478.52500	472.53750
F 23	478.55000	472.56250
F 24	478.57500	472.58750
F 25	478.60000	472.61250
F 26	478.62500	472.63750
F 27	478.65000	472.66250
F 28	478.67500	472.68750
F 29	478.70000	472.71250
F 30	478.72500	472.73750
F 31	478.75000	472.76250
F 32	478.77500	472.78750
F 33	478.80000	472.81250
F 34	478.82500	472.83750
F 35	478.85000	472.86250
F 36	478.87500	472.88750
F 37	478.90000	472.91250
F 38	478.92500	472.93750
F 39	478.95000	472.96250
F 40	478.97500	472.98750
F 41	479.00000	473.01250
F 42	479.02500	473.03750
F 43	479.05000	473.06250
F 44	479.07500	473.08750
F 45	479.10000	473.11250
F 46	479.12500	473.13750
F 47	479.15000	473.16250
F 48	479.17500	473.18750

<u>CHANNEL</u>	<u>BASE TX FREQ</u>	<u>MOBILE TX FREQ</u>
F 49	479.20000	473.21250
F 50	479.22500	473.23750
F 51	479.25000	473.26250
F 52	479.27500	473.28750
F 53	479.30000	473.31250
F 54	479.32500	473.33750
F 55	479.35000	473.36250
F 56	479.37500	473.38750
F 57	479.40000	473.41250
F 58	479.42500	473.43750
F 59	479.45000	473.46250
F 60	479.47500	473.48750
F 61	479.50000	473.51250
F 62	479.52500	473.53750
F 63	479.55000	473.56250
F 64	479.57500	473.58750
F 65	479.60000	473.61250
F 66	479.62500	473.63750
F 67	479.65000	473.66250
F 68	479.67500	473.68750
F 69	479.70000	473.71250
F 70	479.72500	473.73750
F 71	479.75000	473.76250
F 72	479.77500	473.78750
F 73	479.80000	473.81250
F 74	479.82500	473.83750
F 75	479.85000	473.86250
F 76	479.87500	473.88750
F 77	479.90000	473.91250
F 78	479.92500	473.93750
F 79	479.95000	473.96250
F 80	479.97500	473.98750
F 81	480.00000	474.01250
F 82	480.02500	474.03750
F 83	480.05000	474.06250
F 84	480.07500	474.08750
F 85	480.10000	474.11250
F 86	480.12500	474.13750
F 87	480.15000	474.16250
F 88	480.17500	474.18750
F 89	480.20000	474.21250
F 90	480.22500	474.23750
F 91	480.25000	474.26250
F 92	480.27500	474.28750
F 93	480.30000	474.31250
F 94	480.32500	474.33750
F 95	480.35000	474.36250
F 96	480.37500	474.38750
F 97	480.40000	474.41250

<u>CHANNEL</u>	<u>BASE TX FREQ</u>	<u>MOBILE TX FREQ</u>
F 98	480.42500	474.43750
F 99	480.45000	474.46250
F 100	480.47500	474.48750
F 101	480.50000	474.51250
F 102	480.52500	474.53750
F 103	480.55000	474.56250
F 104	480.57500	474.58750
F 105	480.60000	474.61250
F 106	480.62500	474.63750
F 107	480.65000	474.66250
F 108	480.67500	474.68750
F 109	480.70000	474.71250
F 110	480.72500	474.73750
F 111	480.75000	474.76250
F 112	480.77500	474.78750
F 113	480.80000	474.81250
F 114	480.82500	474.83750
F 115	480.85000	474.86250
F 116	480.87500	474.88750
F 117	480.90000	474.91250
F 118	480.92500	474.93750
F 119	480.95000	474.96250
F 120	480.97500	474.98750
F 121	481.00000	475.01250
F 122	481.02500	475.03750
F 123	481.05000	475.06250
F 124	481.07500	475.08750
F 125	481.10000	475.11250
F 126	481.12500	475.13750
F 127	481.15000	475.16250
F 128	481.17500	475.18750
F 129	481.20000	475.21250
F 130	481.22500	475.23750
F 131	481.25000	475.26250
F 132	481.27500	475.28750
F 133	481.30000	475.31250
F 134	481.32500	475.33750
F 135	481.35000	475.36250
F 136	481.37500	475.38750
F 137	481.40000	475.41250
F 138	481.42500	475.43750
F 139	481.45000	475.46250
F 140	481.47500	475.48750
F 141	481.50000	475.51250
F 142	481.52500	475.53750
F 143	481.55000	475.56250
F 144	481.57500	475.58750
F 145	481.60000	475.61250
F 146	481.62500	475.63750

<u>CHANNEL</u>	<u>BASE TX FREQ</u>	<u>MOBILE TX FREQ</u>
F 147	481.65000	475.66250
F 148	481.67500	475.68750
F 149	481.70000	475.71250
F 150	481.72500	475.73750
F 151	481.75000	475.76250
F 152	481.77500	475.78750
F 153	481.80000	475.81250
F 154	481.82500	475.83750
F 155	481.85000	475.86250
F 156	481.87500	475.88750
F 157	481.90000	475.91250
F 158	481.92500	475.93750
F 159	481.95000	475.96250
F 160	481.97500	475.98750
F 161	484.00000	490.01250
F 162	484.02500	490.03750
F 163	484.05000	490.06250
F 164	484.07500	490.08750
F 165	484.10000	490.11250
F 166	484.12500	490.13750
F 167	484.15000	490.16250
F 168	484.17500	490.18750
F 169	484.20000	490.21250
F 170	484.22500	490.23750
F 171	484.25000	490.26250
F 172	484.27500	490.28750
F 173	484.30000	490.31250
F 174	484.32500	490.33750
F 175	484.35000	490.36250
F 176	484.37500	490.38750
F 177	484.40000	490.41250
F 178	484.42500	490.43750
F 179	484.45000	490.46250
F 180	484.47500	490.48750
F 181	484.50000	490.51250
F 182	484.52500	490.53750
F 183	484.55000	490.56250
F 184	484.57500	490.58750
F 185	484.60000	490.61250
F 186	484.62500	490.63750
F 187	484.65000	490.66250
F 188	484.67500	490.68750
F 189	484.70000	490.71250
F 190	484.72500	490.73750
F 191	484.75000	490.76250
F 192	484.77500	490.78750
F 193	484.80000	490.81250
F 194	484.82500	490.83750
F 195	484.85000	490.86250

<u>CHANNEL</u>	<u>BASE TX FREQ</u>	<u>MOBILE TX FREQ</u>
F 196	484.87500	490.88750
F 197	484.90000	490.91250
F 198	484.92500	490.93750
F 199	484.95000	490.96250
F 200	484.97500	490.98750
F 201	485.00000	491.01250
F 202	485.02500	491.03750
F 203	485.05000	491.06250
F 204	485.07500	491.08750
F 205	485.10000	491.11250
F 206	485.12500	491.13750
F 207	485.15000	491.16250
F 208	485.17500	491.18750
F 209	485.20000	491.21250
F 210	485.22500	491.23750
F 211	485.25000	491.26250
F 212	485.27500	491.28750
F 213	485.30000	491.31250
F 214	485.32500	491.33750
F 215	485.35000	491.36250
F 216	485.37500	491.38750
F 217	485.40000	491.41250
F 218	485.42500	491.43750
F 219	485.45000	491.46250
F 220	485.47500	491.48750
F 221	485.50000	491.51250
F 222	485.52500	491.53750
F 223	485.55000	491.56250
F 224	485.57500	491.58750
F 225	485.60000	491.61250
F 226	485.62500	491.63750
F 227	485.65000	491.66250
F 228	485.67500	491.68750
F 229	485.70000	491.71250
F 230	485.72500	491.73750
F 231	485.75000	491.76250
F 232	485.77500	491.78750
F 233	485.80000	491.81250
F 234	485.82500	491.83750
F 235	485.85000	491.86250
F 236	485.87500	491.88750
F 237	485.90000	491.91250
F 238	485.92500	491.93750
F 239	485.95000	491.96250
F 240	485.97500	491.98750
F 241	486.00000	492.01250
F 242	486.02500	492.03750
F 243	486.05000	492.06250
F 244	486.07500	492.08750

<u>CHANNEL</u>	<u>BASE TX FREQ</u>	<u>MOBILE TX FREQ</u>
F 245	486.10000	492.11250
F 246	486.12500	492.13750
F 247	486.15000	492.16250
F 248	486.17500	492.18750
F 249	486.20000	492.21250
F 250	486.22500	492.23750
F 251	486.25000	492.26250
F 252	486.27500	492.28750
F 253	486.30000	492.31250
F 254	486.32500	492.33750
F 255	486.35000	492.36250
F 256	486.37500	492.38750
F 257	486.40000	492.41250
F 258	486.42500	492.43750
F 259	486.45000	492.46250
F 260	486.47500	492.48750
F 261	486.50000	492.51250
F 262	486.52500	492.53750
F 263	486.55000	492.56250
F 264	486.57500	492.58750
F 265	486.60000	492.61250
F 266	486.62500	492.63750
F 267	486.65000	492.66250
F 268	486.67500	492.68750
F 269	486.70000	492.71250
F 270	486.72500	492.73750
F 271	486.75000	492.76250
F 272	486.77500	492.78750
F 273	486.80000	492.81250
F 274	486.82500	492.83750
F 275	486.85000	492.86250
F 276	486.87500	492.88750
F 277	486.90000	492.91250
F 278	486.92500	492.93750
F 279	486.95000	492.96250
F 280	486.97500	492.98750
F 281	487.00000	493.01250
F 282	487.02500	493.03750
F 283	487.05000	493.06250
F 284	487.07500	493.08750
F 285	487.10000	493.11250
F 286	487.12500	493.13750
F 287	487.15000	493.16250
F 288	487.17500	493.18750
F 289	487.20000	493.21250
F 290	487.22500	493.23750
F 291	487.25000	493.26250
F 292	487.27500	493.28750
F 293	487.30000	493.31250

<u>CHANNEL</u>	<u>BASE TX FREQ</u>	<u>MOBILE TX FREQ</u>
F 294	487.32500	493.33750
F 295	487.35000	493.36250
F 296	487.37500	493.38750
F 297	487.40000	493.41250
F 298	487.42500	493.43750
F 299	487.45000	493.46250
F 300	487.47500	493.48750
F 301	487.50000	493.51250
F 302	487.52500	493.53750
F 303	487.55000	493.56250
F 304	487.57500	493.58750
F 305	487.60000	493.61250
F 306	487.62500	493.63750
F 307	487.65000	493.66250
F 308	487.67500	493.68750
F 309	487.70000	493.71250
F 310	487.72500	493.73750
F 311	487.75000	493.76250
F 312	487.77500	493.78750
F 313	487.80000	493.81250
F 314	487.82500	493.83750
F 315	487.85000	493.86250
F 316	487.87500	493.88750
F 317	487.90000	493.91250
F 318	487.92500	493.93750
F 319	487.95000	493.96250
F 320	487.97500	493.98750

1.2.12 FX BAND (25 kHz Channelling) (For reference only)

<u>CHANNEL</u>	<u>FREQUENCY</u>
FX 1	470.50000
FX 2	470.52500
FX 3	470.55000
FX 4	470.57500
FX 5	470.60000
FX 6	470.62500
FX 7	470.65000
FX 8	470.67500
FX 9	470.70000
FX 10	470.72500
FX 11	470.75000
FX 12	470.77500
FX 13	470.80000
FX 14	470.82500
FX 15	470.85000
FX 16	470.87500
FX 17	470.90000
FX 18	470.92500
FX 19	470.95000
FX 20	470.97500
FX 42	471.52500
FX 43	471.55000
FX 44	471.57500
FX 45	471.60000
FX 46	471.62500
FX 47	471.65000
FX 48	471.67500
FX 49	471.70000
FX 50	471.72500
FX 51	471.75000
FX 52	471.77500
FX 53	471.80000
FX 54	471.82500
FX 55	471.85000
FX 56	471.87500
FX 57	471.90000
FX 58	471.92500
FX 59	471.95000
FX 60	471.97500
FX 61	476.02500
FX 62	476.05000
FX 63	476.07500
FX 64	476.10000
FX 65	476.12500
FX 66	476.15000

<u>CHANNEL</u>	<u>FREQUENCY</u>
FX 67	476.17500
FX 68	476.20000
FX 69	476.22500
FX 70	476.25000
FX 71	476.27500
FX 72	476.30000
FX 73	476.32500
FX 74	476.35000
FX 75	476.37500
FX 118	477.45000
FX 119	477.47500
FX 120	477.50000
FX 121	477.52500
FX 122	477.55000
FX 123	477.57500
FX 124	477.60000
FX 125	477.62500
FX 126	477.65000
FX 127	477.67500
FX 128	477.70000
FX 129	477.72500
FX 130	477.75000
FX 131	477.77500
FX 132	477.80000
FX 133	477.82500
FX 134	477.85000
FX 135	477.87500
FX 136	477.90000
FX 137	477.92500
FX 138	477.95000
FX 139	477.97500
FX 140	482.00000
FX 141	482.02500
FX 142	482.05000
FX 143	482.07500
FX 144	482.10000
FX 145	482.12500
FX 146	482.15000
FX 147	482.17500
FX 148	482.20000
FX 149	482.22500
FX 150	482.25000
FX 151	482.27500
FX 152	482.30000
FX 153	482.32500
FX 154	482.35000
FX 155	482.37500

<u>CHANNEL</u>	<u>FREQUENCY</u>
FX 156	482.40000
FX 157	482.42500
FX 158	482.45000
FX 159	482.47500
FX 160	482.50000
FX 161	482.52500
FX 162	482.55000
FX 163	482.57500
FX 164	482.60000
FX 165	482.62500
FX 166	482.65000
FX 167	482.67500
FX 168	482.70000
FX 169	482.72500
FX 170	482.75000
FX 171	482.77500
FX 172	482.80000
FX 173	482.82500
FX 174	482.85000
FX 175	482.87500
FX 176	482.90000
FX 177	482.92500
FX 178	482.95000
FX 179	482.97500
FX 180	483.00000
FX 181	483.02500
FX 182	483.05000
FX 183	483.07500
FX 184	483.10000
FX 185	483.12500
FX 186	483.15000
FX 187	483.17500
FX 188	483.20000
FX 189	483.22500
FX 190	483.25000
FX 191	483.27500
FX 192	483.30000
FX 193	483.32500
FX 194	483.35000
FX 195	483.37500
FX 196	483.40000
FX 197	483.42500
FX 198	483.45000
FX 199	483.47500
FX 200	483.50000
FX 201	483.52500
FX 202	483.55000
FX 203	483.57500
FX 204	483.60000

<u>CHANNEL</u>	<u>FREQUENCY</u>
FX 205	483.62500
FX 206	483.65000
FX 207	483.67500
FX 208	483.70000
FX 209	483.72500
FX 210	483.75000
FX 211	483.77500
FX 212	483.80000
FX 213	483.82500
FX 214	483.85000
FX 215	483.87500
FX 216	483.90000
FX 217	483.92500
FX 218	483.95000
FX 219	483.97500
FX 220	488.00000
FX 221	488.02500
FX 222	488.05000
FX 223	488.07500
FX 224	488.10000
FX 225	488.12500
FX 226	488.15000
FX 227	488.17500
FX 228	488.20000
FX 229	488.22500
FX 230	488.25000
FX 231	488.27500
FX 232	488.30000
FX 233	488.32500
FX 234	488.35000
FX 235	488.37500
FX 236	488.40000
FX 237	488.42500
FX 238	488.45000
FX 239	488.47500
FX 240	488.50000
FX 241	488.52500
FX 242	488.55000
FX 243	488.57500
FX 244	488.60000
FX 245	488.62500
FX 246	488.65000
FX 247	488.67500
FX 248	488.70000
FX 249	488.72500
FX 250	488.75000
FX 251	488.77500
FX 252	488.80000

<u>CHANNEL</u>	<u>FREQUENCY</u>
FX 253	488.82500
FX 254	488.85000
FX 255	488.87500
FX 256	488.90000
FX 257	488.92500
FX 258	488.95000
FX 259	488.97500
FX 260	489.00000
FX 261	489.02500
FX 262	489.05000
FX 263	489.07500
FX 264	489.10000
FX 265	489.12500
FX 266	489.15000
FX 267	489.17500
FX 268	489.20000
FX 269	489.22500
FX 270	489.25000
FX 271	489.27500
FX 272	489.30000
FX 273	489.32500
FX 274	489.35000
FX 275	489.37500
FX 276	489.40000
FX 277	489.42500
FX 278	489.45000
FX 279	489.47500
FX 280	489.50000
FX 281	489.52500
FX 282	489.55000
FX 283	489.57500
FX 284	489.60000
FX 285	489.62500
FX 286	489.65000
FX 287	489.67500
FX 288	489.70000
FX 289	489.72500
FX 290	489.75000
FX 291	489.77500
FX 292	489.80000
FX 293	489.82500
FX 294	489.85000
FX 295	489.87500
FX 296	489.90000
FX 297	489.92500
FX 298	489.95000
FX 299	489.97500

1.2.13 FN BAND (12.5 kHz Channelling)

Band	Structure	EIRP	Emission	Channel Spacing	Remarks
'FN'				12.5 kHz	
		470.500 MHz	Repeater 17 dBW		
	FNX101		Mobile 14 dBW		
	Simplex				
	FNX140				
		471.000 MHz			
		471.500 MHz			
	FNX201				
	Simplex				
	FNX240	471.99375 MHz			
	FN1	472.00625 MHz			
	Mobile Tx				
	FN320	475.99375 MHz			
	FNX301	476.00625 MHz			
	Simplex				
	FNX332				
		476.400 MHz			
		477.425 MHz			
	FNX401				
	Simplex				
	FNX445	477.98125 MHz			
	FN1	477.99375 MHz			
	Base Tx				
	FN320	481.98125 MHz			
	FNX501	481.99375 MHz			
	Simplex				
	FNX660	483.98125 MHz			
	FN321	483.99375 MHz			
	Base Tx				
	FN640	487.98125 MHz			
	FNX701	487.99375 MHz			
	Simplex				
	FNX861	489.99375 MHz			
	FN321	490.00625 MHz			
	Mobile Tx				
	FN640				
		494.000 MHz			

<u>CHANNEL</u>	<u>BASE TX FREQ</u>	<u>MOBILE TX FREQ</u>
FN 1	477.99375	472.00625
FN 2	478.00625	472.01875
FN 3	478.01875	472.03125
FN 4	478.03125	472.04375

<u>CHANNEL</u>	<u>BASE TX FREQ</u>	<u>MOBILE TX FREQ</u>
FN 5	478.04375	472.05625
FN 6	478.05625	472.06875
FN 7	478.06875	472.08125
FN 8	478.08125	472.09375
FN 9	478.09375	472.10625
FN 10	478.10625	472.11875
FN 11	478.11875	472.13125
FN 12	478.13125	472.14375
FN 13	478.14375	472.15625
FN 14	478.15625	472.16875
FN 15	478.16875	472.18125
FN 16	478.18125	472.19375
FN 17	478.19375	472.20625
FN 18	478.20625	472.21875
FN 19	478.21875	472.23125
FN 20	478.23125	472.24375
FN 21	478.24375	472.25625
FN 22	478.25625	472.26875
FN 23	478.26875	472.28125
FN 24	478.28125	472.29375
FN 25	478.29375	472.30625
FN 26	478.30625	472.31875
FN 27	478.31875	472.33125
FN 28	478.33125	472.34375
FN 29	478.34375	472.35625
FN 30	478.35625	472.36875
FN 31	478.36875	472.38125
FN 32	478.38125	472.39375
FN 33	478.39375	472.40625
FN 34	478.40625	472.41875
FN 35	478.41875	472.43125
FN 36	478.43125	472.44375
FN 37	478.44375	472.45625
FN 38	478.45625	472.46875
FN 39	478.46875	472.48125
FN 40	478.48125	472.49375
FN 41	478.49375	472.50625
FN 42	478.50625	472.51875
FN 43	478.51875	472.53125
FN 44	478.53125	472.54375
FN 45	478.54375	472.55625
FN 46	478.55625	472.56875
FN 47	478.56875	472.58125
FN 48	478.58125	472.59375
FN 49	478.59375	472.60625
FN 50	478.60625	472.61875
FN 51	478.61875	472.63125
FN 52	478.63125	472.64375
FN 53	478.64375	472.65625

<u>CHANNEL</u>	<u>BASE TX FREQ</u>	<u>MOBILE TX FREQ</u>
FN 54	478.65625	472.66875
FN 55	478.66875	472.68125
FN 56	478.68125	472.69375
FN 57	478.69375	472.70625
FN 58	478.70625	472.71875
FN 59	478.71875	472.73125
FN 60	478.73125	472.74375
FN 61	478.74375	472.75625
FN 62	478.75625	472.76875
FN 63	478.76875	472.78125
FN 64	478.78125	472.79375
FN 65	478.79375	472.80625
FN 66	478.80625	472.81875
FN 67	478.81875	472.83125
FN 68	478.83125	472.84375
FN 69	478.84375	472.85625
FN 70	478.85625	472.86875
FN 71	478.86875	472.88125
FN 72	478.88125	472.89375
FN 73	478.89375	472.90625
FN 74	478.90625	472.91875
FN 75	478.91875	472.93125
FN 76	478.93125	472.94375
FN 77	478.94375	472.95625
FN 78	478.95625	472.96875
FN 79	478.96875	472.98125
FN 80	478.98125	472.99375
FN 81	478.99375	473.00625
FN 82	479.00625	473.01875
FN 83	479.01875	473.03125
FN 84	479.03125	473.04375
FN 85	479.04375	473.05625
FN 86	479.05625	473.06875
FN 87	479.06875	473.08125
FN 88	479.08125	473.09375
FN 89	479.09375	473.10625
FN 90	479.10625	473.11875
FN 91	479.11875	473.13125
FN 92	479.13125	473.14375
FN 93	479.14375	473.15625
FN 94	479.15625	473.16875
FN 95	479.16875	473.18125
FN 96	479.18125	473.19375
FN 97	479.19375	473.20625
FN 98	479.20625	473.21875
FN 99	479.21875	473.23125
FN 100	479.23125	473.24375
FN 101	479.24375	473.25625
FN 102	479.25625	473.26875

<u>CHANNEL</u>	<u>BASE TX FREQ</u>	<u>MOBILE TX FREQ</u>
FN 103	479.26875	473.28125
FN 104	479.28125	473.29375
FN 105	479.29375	473.30625
FN 106	479.30625	473.31875
FN 107	479.31875	473.33125
FN 108	479.33125	473.34375
FN 109	479.34375	473.35625
FN 110	479.35625	473.36875
FN 111	479.36875	473.38125
FN 112	479.38125	473.39375
FN 113	479.39375	473.40625
FN 114	479.40625	473.41875
FN 115	479.41875	473.43125
FN 116	479.43125	473.44375
FN 117	479.44375	473.45625
FN 118	479.45625	473.46875
FN 119	479.46875	473.48125
FN 120	479.48125	473.49375
FN 121	479.49375	473.50625
FN 122	479.50625	473.51875
FN 123	479.51875	473.53125
FN 124	479.53125	473.54375
FN 125	479.54375	473.55625
FN 126	479.55625	473.56875
FN 127	479.56875	473.58125
FN 128	479.58125	473.59375
FN 129	479.59375	473.60625
FN 130	479.60625	473.61875
FN 131	479.61875	473.63125
FN 132	479.63125	473.64375
FN 133	479.64375	473.65625
FN 134	479.65625	473.66875
FN 135	479.66875	473.68125
FN 136	479.68125	473.69375
FN 137	479.69375	473.70625
FN 138	479.70625	473.71875
FN 139	479.71875	473.73125
FN 140	479.73125	473.74375
FN 141	479.74375	473.75625
FN 142	479.75625	473.76875
FN 143	479.76875	473.78125
FN 144	479.78125	473.79375
FN 145	479.79375	473.80625
FN 146	479.80625	473.81875
FN 147	479.81875	473.83125
FN 148	479.83125	473.84375
FN 149	479.84375	473.85625
FN 150	479.85625	473.86875
FN 151	479.86875	473.88125

<u>CHANNEL</u>	<u>BASE TX FREQ</u>	<u>MOBILE TX FREQ</u>
FN 152	479.88125	473.89375
FN 153	479.89375	473.90625
FN 154	479.90625	473.91875
FN 155	479.91875	473.93125
FN 156	479.93125	473.94375
FN 157	479.94375	473.95625
FN 158	479.95625	473.96875
FN 159	479.96875	473.98125
FN 160	479.98125	473.99375
FN 161	479.99375	474.00625
FN 162	480.00625	474.01875
FN 163	480.01875	474.03125
FN 164	480.03125	474.04375
FN 165	480.04375	474.05625
FN 166	480.05625	474.06875
FN 167	480.06875	474.08125
FN 168	480.08125	474.09375
FN 169	480.09375	474.10625
FN 170	480.10625	474.11875
FN 171	480.11875	474.13125
FN 172	480.13125	474.14375
FN 173	480.14375	474.15625
FN 174	480.15625	474.16875
FN 175	480.16875	474.18125
FN 176	480.18125	474.19375
FN 177	480.19375	474.20625
FN 178	480.20625	474.21875
FN 179	480.21875	474.23125
FN 180	480.23125	474.24375
FN 181	480.24375	474.25625
FN 182	480.25625	474.26875
FN 183	480.26875	474.28125
FN 184	480.28125	474.29375
FN 185	480.29375	474.30625
FN 186	480.30625	474.31875
FN 187	480.31875	474.33125
FN 188	480.33125	474.34375
FN 189	480.34375	474.35625
FN 190	480.35625	474.36875
FN 191	480.36875	474.38125
FN 192	480.38125	474.39375
FN 193	480.39375	474.40625
FN 194	480.40625	474.41875
FN 195	480.41875	474.43125
FN 196	480.43125	474.44375
FN 197	480.44375	474.45625
FN 198	480.45625	474.46875
FN 199	480.46875	474.48125
FN 200	480.48125	474.49375

<u>CHANNEL</u>	<u>BASE TX FREQ</u>	<u>MOBILE TX FREQ</u>
FN 201	480.49375	474.50625
FN 202	480.50625	474.51875
FN 203	480.51875	474.53125
FN 204	480.53125	474.54375
FN 205	480.54375	474.55625
FN 206	480.55625	474.56875
FN 207	480.56875	474.58125
FN 208	480.58125	474.59375
FN 209	480.59375	474.60625
FN 210	480.60625	474.61875
FN 211	480.61875	474.63125
FN 212	480.63125	474.64375
FN 213	480.64375	474.65625
FN 214	480.65625	474.66875
FN 215	480.66875	474.68125
FN 216	480.68125	474.69375
FN 217	480.69375	474.70625
FN 218	480.70625	474.71875
FN 219	480.71875	474.73125
FN 220	480.73125	474.74375
FN 221	480.74375	474.75625
FN 222	480.75625	474.76875
FN 223	480.76875	474.78125
FN 224	480.78125	474.79375
FN 225	480.79375	474.80625
FN 226	480.80625	474.81875
FN 227	480.81875	474.83125
FN 228	480.83125	474.84375
FN 229	480.84375	474.85625
FN 230	480.85625	474.86875
FN 231	480.86875	474.88125
FN 232	480.88125	474.89375
FN 233	480.89375	474.90625
FN 234	480.90625	474.91875
FN 235	480.91875	474.93125
FN 236	480.93125	474.94375
FN 237	480.94375	474.95625
FN 238	480.95625	474.96875
FN 239	480.96875	474.98125
FN 240	480.98125	474.99375
FN 241	480.99375	475.00625
FN 242	481.00625	475.01875
FN 243	481.01875	475.03125
FN 244	481.03125	475.04375
FN 245	481.04375	475.05625
FN 246	481.05625	475.06875
FN 247	481.06875	475.08125
FN 248	481.08125	475.09375
FN 249	481.09375	475.10625

<u>CHANNEL</u>	<u>BASE TX FREQ</u>	<u>MOBILE TX FREQ</u>
FN 250	481.10625	475.11875
FN 251	481.11875	475.13125
FN 252	481.13125	475.14375
FN 253	481.14375	475.15625
FN 254	481.15625	475.16875
FN 255	481.16875	475.18125
FN 256	481.18125	475.19375
FN 257	481.19375	475.20625
FN 258	481.20625	475.21875
FN 259	481.21875	475.23125
FN 260	481.23125	475.24375
FN 261	481.24375	475.25625
FN 262	481.25625	475.26875
FN 263	481.26875	475.28125
FN 264	481.28125	475.29375
FN 265	481.29375	475.30625
FN 266	481.30625	475.31875
FN 267	481.31875	475.33125
FN 268	481.33125	475.34375
FN 269	481.34375	475.35625
FN 270	481.35625	475.36875
FN 271	481.36875	475.38125
FN 272	481.38125	475.39375
FN 273	481.39375	475.40625
FN 274	481.40625	475.41875
FN 275	481.41875	475.43125
FN 276	481.43125	475.44375
FN 277	481.44375	475.45625
FN 278	481.45625	475.46875
FN 279	481.46875	475.48125
FN 280	481.48125	475.49375
FN 281	481.49375	475.50625
FN 282	481.50625	475.51875
FN 283	481.51875	475.53125
FN 284	481.53125	475.54375
FN 285	481.54375	475.55625
FN 286	481.55625	475.56875
FN 287	481.56875	475.58125
FN 288	481.58125	475.59375
FN 289	481.59375	475.60625
FN 290	481.60625	475.61875
FN 291	481.61875	475.63125
FN 292	481.63125	475.64375
FN 293	481.64375	475.65625
FN 294	481.65625	475.66875
FN 295	481.66875	475.68125
FN 296	481.68125	475.69375
FN 297	481.69375	475.70625
FN 298	481.70625	475.71875

<u>CHANNEL</u>	<u>BASE TX FREQ</u>	<u>MOBILE TX FREQ</u>
FN 299	481.71875	475.73125
FN 300	481.73125	475.74375
FN 301	481.74375	475.75625
FN 302	481.75625	475.76875
FN 303	481.76875	475.78125
FN 304	481.78125	475.79375
FN 305	481.79375	475.80625
FN 306	481.80625	475.81875
FN 307	481.81875	475.83125
FN 308	481.83125	475.84375
FN 309	481.84375	475.85625
FN 310	481.85625	475.86875
FN 311	481.86875	475.88125
FN 312	481.88125	475.89375
FN 313	481.89375	475.90625
FN 314	481.90625	475.91875
FN 315	481.91875	475.93125
FN 316	481.93125	475.94375
FN 317	481.94375	475.95625
FN 318	481.95625	475.96875
FN 319	481.96875	475.98125
FN 320	481.98125	475.99375
FN 321	483.99375	490.00625
FN 322	484.00625	490.01875
FN 323	484.01875	490.03125
FN 324	484.03125	490.04375
FN 325	484.04375	490.05625
FN 326	484.05625	490.06875
FN 327	484.06875	490.08125
FN 328	484.08125	490.09375
FN 329	484.09375	490.10625
FN 330	484.10625	490.11875
FN 331	484.11875	490.13125
FN 332	484.13125	490.14375
FN 333	484.14375	490.15625
FN 334	484.15625	490.16875
FN 335	484.16875	490.18125
FN 336	484.18125	490.19375
FN 337	484.19375	490.20625
FN 338	484.20625	490.21875
FN 339	484.21875	490.23125
FN 340	484.23125	490.24375
FN 341	484.24375	490.25625
FN 342	484.25625	490.26875
FN 343	484.26875	490.28125
FN 344	484.28125	490.29375
FN 345	484.29375	490.30625
FN 346	484.30625	490.31875
FN 347	484.31875	490.33125

<u>CHANNEL</u>	<u>BASE TX FREQ</u>	<u>MOBILE TX FREQ</u>
FN 348	484.33125	490.34375
FN 349	484.34375	490.35625
FN 350	484.35625	490.36875
FN 351	484.36875	490.38125
FN 352	484.38125	490.39375
FN 353	484.39375	490.40625
FN 354	484.40625	490.41875
FN 355	484.41875	490.43125
FN 356	484.43125	490.44375
FN 357	484.44375	490.45625
FN 358	484.45625	490.46875
FN 359	484.46875	490.48125
FN 360	484.48125	490.49375
FN 361	484.49375	490.50625
FN 362	484.50625	490.51875
FN 363	484.51875	490.53125
FN 364	484.53125	490.54375
FN 365	484.54375	490.55625
FN 366	484.55625	490.56875
FN 367	484.56875	490.58125
FN 368	484.58125	490.59375
FN 369	484.59375	490.60625
FN 370	484.60625	490.61875
FN 371	484.61875	490.63125
FN 372	484.63125	490.64375
FN 373	484.64375	490.65625
FN 374	484.65625	490.66875
FN 375	484.66875	490.68125
FN 376	484.68125	490.69375
FN 377	484.69375	490.70625
FN 378	484.70625	490.71875
FN 379	484.71875	490.73125
FN 380	484.73125	490.74375
FN 381	484.74375	490.75625
FN 382	484.75625	490.76875
FN 383	484.76875	490.78125
FN 384	484.78125	490.79375
FN 385	484.79375	490.80625
FN 386	484.80625	490.81875
FN 387	484.81875	490.83125
FN 388	484.83125	490.84375
FN 389	484.84375	490.85625
FN 390	484.85625	490.86875
FN 391	484.86875	490.88125
FN 392	484.88125	490.89375
FN 393	484.89375	490.90625
FN 394	484.90625	490.91875
FN 395	484.91875	490.93125
FN 396	484.93125	490.94375

<u>CHANNEL</u>	<u>BASE TX FREQ</u>	<u>MOBILE TX FREQ</u>
FN 397	484.94375	490.95625
FN 398	484.95625	490.96875
FN 399	484.96875	490.98125
FN 400	484.98125	490.99375
FN 401	484.99375	491.00625
FN 402	485.00625	491.01875
FN 403	485.01875	491.03125
FN 404	485.03125	491.04375
FN 405	485.04375	491.05625
FN 406	485.05625	491.06875
FN 407	485.06875	491.08125
FN 408	485.08125	491.09375
FN 409	485.09375	491.10625
FN 410	485.10625	491.11875
FN 411	485.11875	491.13125
FN 412	485.13125	491.14375
FN 413	485.14375	491.15625
FN 414	485.15625	491.16875
FN 415	485.16875	491.18125
FN 416	485.18125	491.19375
FN 417	485.19375	491.20625
FN 418	485.20625	491.21875
FN 419	485.21875	491.23125
FN 420	485.23125	491.24375
FN 421	485.24375	491.25625
FN 422	485.25625	491.26875
FN 423	485.26875	491.28125
FN 424	485.28125	491.29375
FN 425	485.29375	491.30625
FN 426	485.30625	491.31875
FN 427	485.31875	491.33125
FN 428	485.33125	491.34375
FN 429	485.34375	491.35625
FN 430	485.35625	491.36875
FN 431	485.36875	491.38125
FN 432	485.38125	491.39375
FN 433	485.39375	491.40625
FN 434	485.40625	491.41875
FN 435	485.41875	491.43125
FN 436	485.43125	491.44375
FN 437	485.44375	491.45625
FN 438	485.45625	491.46875
FN 439	485.46875	491.48125
FN 440	485.48125	491.49375
FN 441	485.49375	491.50625
FN 442	485.50625	491.51875
FN 443	485.51875	491.53125
FN 444	485.53125	491.54375
FN 445	485.54375	491.55625

<u>CHANNEL</u>	<u>BASE TX FREQ</u>	<u>MOBILE TX FREQ</u>
FN 446	485.55625	491.56875
FN 447	485.56875	491.58125
FN 448	485.58125	491.59375
FN 449	485.59375	491.60625
FN 450	485.60625	491.61875
FN 451	485.61875	491.63125
FN 452	485.63125	491.64375
FN 453	485.64375	491.65625
FN 454	485.65625	491.66875
FN 455	485.66875	491.68125
FN 456	485.68125	491.69375
FN 457	485.69375	491.70625
FN 458	485.70625	491.71875
FN 459	485.71875	491.73125
FN 460	485.73125	491.74375
FN 461	485.74375	491.75625
FN 462	485.75625	491.76875
FN 463	485.76875	491.78125
FN 464	485.78125	491.79375
FN 465	485.79375	491.80625
FN 466	485.80625	491.81875
FN 467	485.81875	491.83125
FN 468	485.83125	491.84375
FN 469	485.84375	491.85625
FN 470	485.85625	491.86875
FN 471	485.86875	491.88125
FN 472	485.88125	491.89375
FN 473	485.89375	491.90625
FN 474	485.90625	491.91875
FN 475	485.91875	491.93125
FN 476	485.93125	491.94375
FN 477	485.94375	491.95625
FN 478	485.95625	491.96875
FN 479	485.96875	491.98125
FN 480	485.98125	491.99375
FN 481	485.99375	492.00625
FN 482	486.00625	492.01875
FN 483	486.01875	492.03125
FN 484	486.03125	492.04375
FN 485	486.04375	492.05625
FN 486	486.05625	492.06875
FN 487	486.06875	492.08125
FN 488	486.08125	492.09375
FN 489	486.09375	492.10625
FN 490	486.10625	492.11875
FN 491	486.11875	492.13125
FN 492	486.13125	492.14375
FN 493	486.14375	492.15625
FN 494	486.15625	492.16875

<u>CHANNEL</u>	<u>BASE TX FREQ</u>	<u>MOBILE TX FREQ</u>
FN 495	486.16875	492.18125
FN 496	486.18125	492.19375
FN 497	486.19375	492.20625
FN 498	486.20625	492.21875
FN 499	486.21875	492.23125
FN 500	486.23125	492.24375
FN 501	486.24375	492.25625
FN 502	486.25625	492.26875
FN 503	486.26875	492.28125
FN 504	486.28125	492.29375
FN 505	486.29375	492.30625
FN 506	486.30625	492.31875
FN 507	486.31875	492.33125
FN 508	486.33125	492.34375
FN 509	486.34375	492.35625
FN 510	486.35625	492.36875
FN 511	486.36875	492.38125
FN 512	486.38125	492.39375
FN 513	486.39375	492.40625
FN 514	486.40625	492.41875
FN 515	486.41875	492.43125
FN 516	486.43125	492.44375
FN 517	486.44375	492.45625
FN 518	486.45625	492.46875
FN 519	486.46875	492.48125
FN 520	486.48125	492.49375
FN 521	486.49375	492.50625
FN 522	486.50625	492.51875
FN 523	486.51875	492.53125
FN 524	486.53125	492.54375
FN 525	486.54375	492.55625
FN 526	486.55625	492.56875
FN 527	486.56875	492.58125
FN 528	486.58125	492.59375
FN 529	486.59375	492.60625
FN 530	486.60625	492.61875
FN 531	486.61875	492.63125
FN 532	486.63125	492.64375
FN 533	486.64375	492.65625
FN 534	486.65625	492.66875
FN 535	486.66875	492.68125
FN 536	486.68125	492.69375
FN 537	486.69375	492.70625
FN 538	486.70625	492.71875
FN 539	486.71875	492.73125
FN 540	486.73125	492.74375
FN 541	486.74375	492.75625
FN 542	486.75625	492.76875
FN 543	486.76875	492.78125

<u>CHANNEL</u>	<u>BASE TX FREQ</u>	<u>MOBILE TX FREQ</u>
FN 544	486.78125	492.79375
FN 545	486.79375	492.80625
FN 546	486.80625	492.81875
FN 547	486.81875	492.83125
FN 548	486.83125	492.84375
FN 549	486.84375	492.85625
FN 550	486.85625	492.86875
FN 551	486.86875	492.88125
FN 552	486.88125	492.89375
FN 553	486.89375	492.90625
FN 554	486.90625	492.91875
FN 555	486.91875	492.93125
FN 556	486.93125	492.94375
FN 557	486.94375	492.95625
FN 558	486.95625	492.96875
FN 559	486.96875	492.98125
FN 560	486.98125	492.99375
FN 561	486.99375	493.00625
FN 562	487.00625	493.01875
FN 563	487.01875	493.03125
FN 564	487.03125	493.04375
FN 565	487.04375	493.05625
FN 566	487.05625	493.06875
FN 567	487.06875	493.08125
FN 568	487.08125	493.09375
FN 569	487.09375	493.10625
FN 570	487.10625	493.11875
FN 571	487.11875	493.13125
FN 572	487.13125	493.14375
FN 573	487.14375	493.15625
FN 574	487.15625	493.16875
FN 575	487.16875	493.18125
FN 576	487.18125	493.19375
FN 577	487.19375	493.20625
FN 578	487.20625	493.21875
FN 579	487.21875	493.23125
FN 580	487.23125	493.24375
FN 581	487.24375	493.25625
FN 582	487.25625	493.26875
FN 583	487.26875	493.28125
FN 584	487.28125	493.29375
FN 585	487.29375	493.30625
FN 586	487.30625	493.31875
FN 587	487.31875	493.33125
FN 588	487.33125	493.34375
FN 589	487.34375	493.35625
FN 590	487.35625	493.36875
FN 591	487.36875	493.38125
FN 592	487.38125	493.39375

<u>CHANNEL</u>	<u>BASE TX FREQ</u>	<u>MOBILE TX FREQ</u>
FN 593	487.39375	493.40625
FN 594	487.40625	493.41875
FN 595	487.41875	493.43125
FN 596	487.43125	493.44375
FN 597	487.44375	493.45625
FN 598	487.45625	493.46875
FN 599	487.46875	493.48125
FN 600	487.48125	493.49375
FN 601	487.49375	493.50625
FN 602	487.50625	493.51875
FN 603	487.51875	493.53125
FN 604	487.53125	493.54375
FN 605	487.54375	493.55625
FN 606	487.55625	493.56875
FN 607	487.56875	493.58125
FN 608	487.58125	493.59375
FN 609	487.59375	493.60625
FN 610	487.60625	493.61875
FN 611	487.61875	493.63125
FN 612	487.63125	493.64375
FN 613	487.64375	493.65625
FN 614	487.65625	493.66875
FN 615	487.66875	493.68125
FN 616	487.68125	493.69375
FN 617	487.69375	493.70625
FN 618	487.70625	493.71875
FN 619	487.71875	493.73125
FN 620	487.73125	493.74375
FN 621	487.74375	493.75625
FN 622	487.75625	493.76875
FN 623	487.76875	493.78125
FN 624	487.78125	493.79375
FN 625	487.79375	493.80625
FN 626	487.80625	493.81875
FN 627	487.81875	493.83125
FN 628	487.83125	493.84375
FN 629	487.84375	493.85625
FN 630	487.85625	493.86875
FN 631	487.86875	493.88125
FN 632	487.88125	493.89375
FN 633	487.89375	493.90625
FN 634	487.90625	493.91875
FN 635	487.91875	493.93125
FN 636	487.93125	493.94375
FN 637	487.94375	493.95625
FN 638	487.95625	493.96875
FN 639	487.96875	493.98125
FN 640	487.98125	493.99375

1.2.14 FNX BAND (12.5 kHz Channelling)

<u>CHANNEL</u>	<u>FREQUENCY</u>
FNX 101	470.50625
FNX 102	470.51875
FNX 103	470.53125
FNX 104	470.54375
FNX 105	470.55625
FNX 106	470.56875
FNX 107	470.58125
FNX 108	470.59375
FNX 109	470.60625
FNX 110	470.61875
FNX 111	470.63125
FNX 112	470.64375
FNX 113	470.65625
FNX 114	470.66875
FNX 115	470.68125
FNX 116	470.69375
FNX 117	470.70625
FNX 118	470.71875
FNX 119	470.73125
FNX 120	470.74375
FNX 121	470.75625
FNX 122	470.76875
FNX 123	470.78125
FNX 124	470.79375
FNX 125	470.80625
FNX 126	470.81875
FNX 127	470.83125
FNX 128	470.84375
FNX 129	470.85625
FNX 130	470.86875
FNX 131	470.88125
FNX 132	470.89375
FNX 133	470.90625
FNX 134	470.91875
FNX 135	470.93125
FNX 136	470.94375
FNX 137	470.95625
FNX 138	470.96875
FNX 139	470.98125
FNX 140	470.99375
FNX 201	471.50625
FNX 202	471.51875
FNX 203	471.53125
FNX 204	471.54375
FNX 205	471.55625
FNX 206	471.56875

<u>CHANNEL</u>	<u>FREQUENCY</u>
FNX 207	471.58125
FNX 208	471.59375
FNX 209	471.60625
FNX 210	471.61875
FNX 211	471.63125
FNX 212	471.64375
FNX 213	471.65625
FNX 214	471.66875
FNX 215	471.68125
FNX 216	471.69375
FNX 217	471.70625
FNX 218	471.71875
FNX 219	471.73125
FNX 220	471.74375
FNX 221	471.75625
FNX 222	471.76875
FNX 223	471.78125
FNX 224	471.79375
FNX 225	471.80625
FNX 226	471.81875
FNX 227	471.83125
FNX 228	471.84375
FNX 229	471.85625
FNX 230	471.86875
FNX 231	471.88125
FNX 232	471.89375
FNX 233	471.90625
FNX 234	471.91875
FNX 235	471.93125
FNX 236	471.94375
FNX 237	471.95625
FNX 238	471.96875
FNX 239	471.98125
FNX 240	471.99375
FNX 301	476.00625
FNX 302	476.01875
FNX 303	476.03125
FNX 304	476.04375
FNX 305	476.05625
FNX 306	476.06875
FNX 307	476.08125
FNX 308	476.09375
FNX 309	476.10625
FNX 310	476.11875
FNX 311	476.13125
FNX 312	476.14375
FNX 313	476.15625
FNX 314	476.16875

<u>CHANNEL</u>	<u>FREQUENCY</u>
FNX 315	476.18125
FNX 316	476.19375
FNX 317	476.20625
FNX 318	476.21875
FNX 319	476.23125
FNX 320	476.24375
FNX 321	476.25625
FNX 322	476.26875
FNX 323	476.28125
FNX 324	476.29375
FNX 325	476.30625
FNX 326	476.31875
FNX 327	476.33125
FNX 328	476.34375
FNX 329	476.35625
FNX 330	476.36875
FNX 331	476.38125
FNX 332	476.39375
FNX 401	477.43125
FNX 402	477.44375
FNX 403	477.45625
FNX 404	477.46875
FNX 405	477.48125
FNX 406	477.49375
FNX 407	477.50625
FNX 408	477.51875
FNX 409	477.53125
FNX 410	477.54375
FNX 411	477.55625
FNX 412	477.56875
FNX 413	477.58125
FNX 414	477.59375
FNX 415	477.60625
FNX 416	477.61875
FNX 417	477.63125
FNX 418	477.64375
FNX 419	477.65625
FNX 420	477.66875
FNX 421	477.68125
FNX 422	477.69375
FNX 423	477.70625
FNX 424	477.71875
FNX 425	477.73125
FNX 426	477.74375
FNX 427	477.75625
FNX 428	477.76875
FNX 429	477.78125
FNX 430	477.79375

<u>CHANNEL</u>	<u>FREQUENCY</u>
FNX 431	477.80625
FNX 432	477.81875
FNX 433	477.83125
FNX 434	477.84375
FNX 435	477.85625
FNX 436	477.86875
FNX 437	477.88125
FNX 438	477.89375
FNX 439	477.90625
FNX 440	477.91875
FNX 441	477.93125
FNX 442	477.94375
FNX 443	477.95625
FNX 444	477.96875
FNX 445	477.98125
FNX 501	481.99375
FNX 502	482.00625
FNX 503	482.01875
FNX 504	482.03125
FNX 505	482.04375
FNX 506	482.05625
FNX 507	482.06875
FNX 508	482.08125
FNX 509	482.09375
FNX 510	482.10625
FNX 511	482.11875
FNX 512	482.13125
FNX 513	482.14375
FNX 514	482.15625
FNX 515	482.16875
FNX 516	482.18125
FNX 517	482.19375
FNX 518	482.20625
FNX 519	482.21875
FNX 520	482.23125
FNX 521	482.24375
FNX 522	482.25625
FNX 523	482.26875
FNX 524	482.28125
FNX 525	482.29375
FNX 526	482.30625
FNX 527	482.31875
FNX 528	482.33125
FNX 529	482.34375
FNX 530	482.35625
FNX 531	482.36875
FNX 532	482.38125
FNX 533	482.39375

<u>CHANNEL</u>	<u>FREQUENCY</u>
FNX 534	482.40625
FNX 535	482.41875
FNX 536	482.43125
FNX 537	482.44375
FNX 538	482.45625
FNX 539	482.46875
FNX 540	482.48125
FNX 541	482.49375
FNX 542	482.50625
FNX 543	482.51875
FNX 544	482.53125
FNX 545	482.54375
FNX 546	482.55625
FNX 547	482.56875
FNX 548	482.58125
FNX 549	482.59375
FNX 550	482.60625
FNX 551	482.61875
FNX 552	482.63125
FNX 553	482.64375
FNX 554	482.65625
FNX 555	482.66875
FNX 556	482.68125
FNX 557	482.69375
FNX 558	482.70625
FNX 559	482.71875
FNX 560	482.73125
FNX 561	482.74375
FNX 562	482.75625
FNX 563	482.76875
FNX 564	482.78125
FNX 565	482.79375
FNX 566	482.80625
FNX 567	482.81875
FNX 568	482.83125
FNX 569	482.84375
FNX 570	482.85625
FNX 571	482.86875
FNX 572	482.88125
FNX 573	482.89375
FNX 574	482.90625
FNX 575	482.91875
FNX 576	482.93125
FNX 577	482.94375
FNX 578	482.95625
FNX 579	482.96875
FNX 580	482.98125
FNX 581	482.99375
FNX 582	483.00625

<u>CHANNEL</u>	<u>FREQUENCY</u>
FNX 583	483.01875
FNX 584	483.03125
FNX 585	483.04375
FNX 586	483.05625
FNX 587	483.06875
FNX 588	483.08125
FNX 589	483.09375
FNX 590	483.10625
FNX 591	483.11875
FNX 592	483.13125
FNX 593	483.14375
FNX 594	483.15625
FNX 595	483.16875
FNX 596	483.18125
FNX 597	483.19375
FNX 598	483.20625
FNX 599	483.21875
FNX 600	483.23125
FNX 601	483.24375
FNX 602	483.25625
FNX 603	483.26875
FNX 604	483.28125
FNX 605	483.29375
FNX 606	483.30625
FNX 607	483.31875
FNX 608	483.33125
FNX 609	483.34375
FNX 610	483.35625
FNX 611	483.36875
FNX 612	483.38125
FNX 613	483.39375
FNX 614	483.40625
FNX 615	483.41875
FNX 616	483.43125
FNX 617	483.44375
FNX 618	483.45625
FNX 619	483.46875
FNX 620	483.48125
FNX 621	483.49375
FNX 622	483.50625
FNX 623	483.51875
FNX 624	483.53125
FNX 625	483.54375
FNX 626	483.55625
FNX 627	483.56875
FNX 628	483.58125
FNX 629	483.59375
FNX 630	483.60625
FNX 631	483.61875

<u>CHANNEL</u>	<u>FREQUENCY</u>
FNX 632	483.63125
FNX 633	483.64375
FNX 634	483.65625
FNX 635	483.66875
FNX 636	483.68125
FNX 637	483.69375
FNX 638	483.70625
FNX 639	483.71875
FNX 640	483.73125
FNX 641	483.74375
FNX 642	483.75625
FNX 643	483.76875
FNX 644	483.78125
FNX 645	483.79375
FNX 646	483.80625
FNX 647	483.81875
FNX 648	483.83125
FNX 649	483.84375
FNX 650	483.85625
FNX 651	483.86875
FNX 652	483.88125
FNX 653	483.89375
FNX 654	483.90625
FNX 655	483.91875
FNX 656	483.93125
FNX 657	483.94375
FNX 658	483.95625
FNX 659	483.96875
FNX 660	483.98125
FNX 701	487.99375
FNX 702	488.00625
FNX 703	488.01875
FNX 704	488.03125
FNX 705	488.04375
FNX 706	488.05625
FNX 707	488.06875
FNX 708	488.08125
FNX 709	488.09375
FNX 710	488.10625
FNX 711	488.11875
FNX 712	488.13125
FNX 713	488.14375
FNX 714	488.15625
FNX 715	488.16875
FNX 716	488.18125
FNX 717	488.19375
FNX 718	488.20625
FNX 719	488.21875

<u>CHANNEL</u>	<u>FREQUENCY</u>
FNX 720	488.23125
FNX 721	488.24375
FNX 722	488.25625
FNX 723	488.26875
FNX 724	488.28125
FNX 725	488.29375
FNX 726	488.30625
FNX 727	488.31875
FNX 728	488.33125
FNX 729	488.34375
FNX 730	488.35625
FNX 731	488.36875
FNX 732	488.38125
FNX 733	488.39375
FNX 734	488.40625
FNX 735	488.41875
FNX 736	488.43125
FNX 737	488.44375
FNX 738	488.45625
FNX 739	488.46875
FNX 740	488.48125
FNX 741	488.49375
FNX 742	488.50625
FNX 743	488.51875
FNX 744	488.53125
FNX 745	488.54375
FNX 746	488.55625
FNX 747	488.56875
FNX 748	488.58125
FNX 749	488.59375
FNX 750	488.60625
FNX 751	488.61875
FNX 752	488.63125
FNX 753	488.64375
FNX 754	488.65625
FNX 755	488.66875
FNX 756	488.68125
FNX 757	488.69375
FNX 758	488.70625
FNX 759	488.71875
FNX 760	488.73125
FNX 761	488.74375
FNX 762	488.75625
FNX 763	488.76875
FNX 764	488.78125
FNX 765	488.79375
FNX 766	488.80625
FNX 767	488.81875
FNX 768	488.83125

<u>CHANNEL</u>	<u>FREQUENCY</u>
FNX 769	488.84375
FNX 770	488.85625
FNX 771	488.86875
FNX 772	488.88125
FNX 773	488.89375
FNX 774	488.90625
FNX 775	488.91875
FNX 776	488.93125
FNX 777	488.94375
FNX 778	488.95625
FNX 779	488.96875
FNX 780	488.98125
FNX 781	488.99375
FNX 782	489.00625
FNX 783	489.01875
FNX 784	489.03125
FNX 785	489.04375
FNX 786	489.05625
FNX 787	489.06875
FNX 788	489.08125
FNX 789	489.09375
FNX 790	489.10625
FNX 791	489.11875
FNX 792	489.13125
FNX 793	489.14375
FNX 794	489.15625
FNX 795	489.16875
FNX 796	489.18125
FNX 797	489.19375
FNX 798	489.20625
FNX 799	489.21875
FNX 800	489.23125
FNX 801	489.24375
FNX 802	489.25625
FNX 803	489.26875
FNX 804	489.28125
FNX 805	489.29375
FNX 806	489.30625
FNX 807	489.31875
FNX 808	489.33125
FNX 809	489.34375
FNX 810	489.35625
FNX 811	489.36875
FNX 812	489.38125
FNX 813	489.39375
FNX 814	489.40625
FNX 815	489.41875
FNX 816	489.43125
FNX 817	489.44375

<u>CHANNEL</u>	<u>FREQUENCY</u>
FNX 818	489.45625
FNX 819	489.46875
FNX 820	489.48125
FNX 821	489.49375
FNX 822	489.50625
FNX 823	489.51875
FNX 824	489.53125
FNX 825	489.54375
FNX 826	489.55625
FNX 827	489.56875
FNX 828	489.58125
FNX 829	489.59375
FNX 830	489.60625
FNX 831	489.61875
FNX 832	489.63125
FNX 833	489.64375
FNX 834	489.65625
FNX 835	489.66875
FNX 836	489.68125
FNX 837	489.69375
FNX 838	489.70625
FNX 839	489.71875
FNX 840	489.73125
FNX 841	489.74375
FNX 842	489.75625
FNX 843	489.76875
FNX 844	489.78125
FNX 845	489.79375
FNX 846	489.80625
FNX 847	489.81875
FNX 848	489.83125
FNX 849	489.84375
FNX 850	489.85625
FNX 851	489.86875
FNX 852	489.88125
FNX 853	489.89375
FNX 854	489.90625
FNX 855	489.91875
FNX 856	489.93125
FNX 857	489.94375
FNX 858	489.95625
FNX 859	489.96875
FNX 860	489.98125
FNX 861	489.99375

1.2.15 TS BAND

Band	Structure	EIRP	Emission	Channel Spacing	Remarks
TS'	<div style="display: flex; flex-direction: column; align-items: center;"> <div style="display: flex; align-items: center; margin-bottom: 20px;"> <div style="border: 1px solid black; padding: 5px; text-align: center; width: 100px;"> TS281 Mobile Tx TS520 </div> <div style="margin-left: 10px;"> 813.000 MHz 819.000 MHz </div> </div> <div style="display: flex; align-items: center;"> <div style="border: 1px solid black; padding: 5px; text-align: center; width: 100px;"> TS281 Base Tx TS520 </div> <div style="margin-left: 10px;"> 858.000 MHz 864.000 MHz </div> </div> </div>	Repeater 21.8dBW Mobile 16 dBW	FM	25 kHz	

<u>CHANNEL</u>	<u>BASE TX FREQ</u>	<u>MOBILE TX FREQ</u>
TS 281	858.01250	813.01250
TS 282	858.03750	813.03750
TS 283	858.06250	813.06250
TS 284	858.08750	813.08750
TS 285	858.11250	813.11250
TS 286	858.13750	813.13750
TS 287	858.16250	813.16250
TS 288	858.18750	813.18750
TS 289	858.21250	813.21250
TS 290	858.23750	813.23750
TS 291	858.26250	813.26250
TS 292	858.28750	813.28750
TS 293	858.31250	813.31250
TS 294	858.33750	813.33750
TS 295	858.36250	813.36250
TS 296	858.38750	813.38750
TS 297	858.41250	813.41250
TS 298	858.43750	813.43750
TS 299	858.46250	813.46250
TS 300	858.48750	813.48750
TS 301	858.51250	813.51250
TS 302	858.53750	813.53750
TS 303	858.56250	813.56250
TS 304	858.58750	813.58750
TS 305	858.61250	813.61250
TS 306	858.63750	813.63750
TS 307	858.66250	813.66250
TS 308	858.68750	813.68750
TS 309	858.71250	813.71250
TS 310	858.73750	813.73750
TS 311	858.76250	813.76250
TS 312	858.78750	813.78750
TS 313	858.81250	813.81250

<u>CHANNEL</u>	<u>BASE TX FREQ</u>	<u>MOBILE TX FREQ</u>
TS 314	858.83750	813.83750
TS 315	858.86250	813.86250
TS 316	858.88750	813.88750
TS 317	858.91250	813.91250
TS 318	858.93750	813.93750
TS 319	858.96250	813.96250
TS 320	858.98750	813.98750
TS 321	859.01250	814.01250
TS 322	859.03750	814.03750
TS 323	859.06250	814.06250
TS 324	859.08750	814.08750
TS 325	859.11250	814.11250
TS 326	859.13750	814.13750
TS 327	859.16250	814.16250
TS 328	859.18750	814.18750
TS 329	859.21250	814.21250
TS 330	859.23750	814.23750
TS 331	859.26250	814.26250
TS 332	859.28750	814.28750
TS 333	859.31250	814.31250
TS 334	859.33750	814.33750
TS 335	859.36250	814.36250
TS 336	859.38750	814.38750
TS 337	859.41250	814.41250
TS 338	859.43750	814.43750
TS 339	859.46250	814.46250
TS 340	859.48750	814.48750
TS 341	859.51250	814.51250
TS 342	859.53750	814.53750
TS 343	859.56250	814.56250
TS 344	859.58750	814.58750
TS 345	859.61250	814.61250
TS 346	859.63750	814.63750
TS 347	859.66250	814.66250
TS 348	859.68750	814.68750
TS 349	859.71250	814.71250
TS 350	859.73750	814.73750
TS 351	859.76250	814.76250
TS 352	859.78750	814.78750
TS 353	859.81250	814.81250
TS 354	859.83750	814.83750
TS 355	859.86250	814.86250
TS 356	859.88750	814.88750
TS 357	859.91250	814.91250
TS 358	859.93750	814.93750
TS 359	859.96250	814.96250
TS 360	859.98750	814.98750
TS 361	860.01250	815.01250
TS 362	860.03750	815.03750

<u>CHANNEL</u>	<u>BASE TX FREQ</u>	<u>MOBILE TX FREQ</u>
TS 363	860.06250	815.06250
TS 364	860.08750	815.08750
TS 365	860.11250	815.11250
TS 366	860.13750	815.13750
TS 367	860.16250	815.16250
TS 368	860.18750	815.18750
TS 369	860.21250	815.21250
TS 370	860.23750	815.23750
TS 371	860.26250	815.26250
TS 372	860.28750	815.28750
TS 373	860.31250	815.31250
TS 374	860.33750	815.33750
TS 375	860.36250	815.36250
TS 376	860.38750	815.38750
TS 377	860.41250	815.41250
TS 378	860.43750	815.43750
TS 379	860.46250	815.46250
TS 380	860.48750	815.48750
TS 381	860.51250	815.51250
TS 382	860.53750	815.53750
TS 383	860.56250	815.56250
TS 384	860.58750	815.58750
TS 385	860.61250	815.61250
TS 386	860.63750	815.63750
TS 387	860.66250	815.66250
TS 388	860.68750	815.68750
TS 389	860.71250	815.71250
TS 390	860.73750	815.73750
TS 391	860.76250	815.76250
TS 392	860.78750	815.78750
TS 393	860.81250	815.81250
TS 394	860.83750	815.83750
TS 395	860.86250	815.86250
TS 396	860.88750	815.88750
TS 397	860.91250	815.91250
TS 398	860.93750	815.93750
TS 399	860.96250	815.96250
TS 400	860.98750	815.98750
TS 401	861.01250	816.01250
TS 402	861.03750	816.03750
TS 403	861.06250	816.06250
TS 404	861.08750	816.08750
TS 405	861.11250	816.11250
TS 406	861.13750	816.13750
TS 407	861.16250	816.16250
TS 408	861.18750	816.18750
TS 409	861.21250	816.21250
TS 410	861.23750	816.23750
TS 411	861.26250	816.26250

<u>CHANNEL</u>	<u>BASE TX FREQ</u>	<u>MOBILE TX FREQ</u>
TS 412	861.28750	816.28750
TS 413	861.31250	816.31250
TS 414	861.33750	816.33750
TS 415	861.36250	816.36250
TS 416	861.38750	816.38750
TS 417	861.41250	816.41250
TS 418	861.43750	816.43750
TS 419	861.46250	816.46250
TS 420	861.48750	816.48750
TS 421	861.51250	816.51250
TS 422	861.53750	816.53750
TS 423	861.56250	816.56250
TS 424	861.58750	816.58750
TS 425	861.61250	816.61250
TS 426	861.63750	816.63750
TS 427	861.66250	816.66250
TS 428	861.68750	816.68750
TS 429	861.71250	816.71250
TS 430	861.73750	816.73750
TS 431	861.76250	816.76250
TS 432	861.78750	816.78750
TS 433	861.81250	816.81250
TS 434	861.83750	816.83750
TS 435	861.86250	816.86250
TS 436	861.88750	816.88750
TS 437	861.91250	816.91250
TS 438	861.93750	816.93750
TS 439	861.96250	816.96250
TS 440	861.98750	816.98750
TS 441	862.01250	817.01250
TS 442	862.03750	817.03750
TS 443	862.06250	817.06250
TS 444	862.08750	817.08750
TS 445	862.11250	817.11250
TS 446	862.13750	817.13750
TS 447	862.16250	817.16250
TS 448	862.18750	817.18750
TS 449	862.21250	817.21250
TS 450	862.23750	817.23750
TS 451	862.26250	817.26250
TS 452	862.28750	817.28750
TS 453	862.31250	817.31250
TS 454	862.33750	817.33750
TS 455	862.36250	817.36250
TS 456	862.38750	817.38750
TS 457	862.41250	817.41250
TS 458	862.43750	817.43750
TS 459	862.46250	817.46250
TS 460	862.48750	817.48750

<u>CHANNEL</u>	<u>BASE TX FREQ</u>	<u>MOBILE TX FREQ</u>
TS 461	862.51250	817.51250
TS 462	862.53750	817.53750
TS 463	862.56250	817.56250
TS 464	862.58750	817.58750
TS 465	862.61250	817.61250
TS 466	862.63750	817.63750
TS 467	862.66250	817.66250
TS 468	862.68750	817.68750
TS 469	862.71250	817.71250
TS 470	862.73750	817.73750
TS 471	862.76250	817.76250
TS 472	862.78750	817.78750
TS 473	862.81250	817.81250
TS 474	862.83750	817.83750
TS 475	862.86250	817.86250
TS 476	862.88750	817.88750
TS 477	862.91250	817.91250
TS 478	862.93750	817.93750
TS 479	862.96250	817.96250
TS 480	862.98750	817.98750
TS 481	863.01250	818.01250
TS 482	863.03750	818.03750
TS 483	863.06250	818.06250
TS 484	863.08750	818.08750
TS 485	863.11250	818.11250
TS 486	863.13750	818.13750
TS 487	863.16250	818.16250
TS 488	863.18750	818.18750
TS 489	863.21250	818.21250
TS 490	863.23750	818.23750
TS 491	863.26250	818.26250
TS 492	863.28750	818.28750
TS 493	863.31250	818.31250
TS 494	863.33750	818.33750
TS 495	863.36250	818.36250
TS 496	863.38750	818.38750
TS 497	863.41250	818.41250
TS 498	863.43750	818.43750
TS 499	863.46250	818.46250
TS 500	863.48750	818.48750
TS 501	863.51250	818.51250
TS 502	863.53750	818.53750
TS 503	863.56250	818.56250
TS 504	863.58750	818.58750
TS 505	863.61250	818.61250
TS 506	863.63750	818.63750
TS 507	863.66250	818.66250
TS 508	863.68750	818.68750
TS 509	863.71250	818.71250

<u>CHANNEL</u>	<u>BASE TX FREQ</u>	<u>MOBILE TX FREQ</u>
TS 510	863.73750	818.73750
TS 511	863.76250	818.76250
TS 512	863.78750	818.78750
TS 513	863.81250	818.81250
TS 514	863.83750	818.83750
TS 515	863.86250	818.86250
TS 516	863.88750	818.88750
TS 517	863.91250	818.91250
TS 518	863.93750	818.93750
TS 519	863.96250	818.96250
TS 520	863.98750	818.98750

1.2.16 TX BAND

Band	Structure	EIRP	Emission	Channel Spacing	Remarks
"TX"		Mobile 16 dBW	FM	25 kHz	

TX1
 Simplex
 TX37

868.100 MHz

869.025 MHz

<u>CHANNEL</u>	<u>FREQUENCY</u>
----------------	------------------

TX 1	868.1125
TX 2	868.1375
TX 3	868.1625
TX 4	868.1875
TX 5	868.2125
TX 6	868.2375
TX 7	868.2625
TX 8	868.2875
TX 9	868.3125
TX 10	868.3375
TX 11	868.3625
TX 12	868.3875
TX 13	868.4125
TX 14	868.4375
TX 15	868.4625
TX 16	868.4875
TX 17	868.5125
TX 18	868.5375
TX 19	868.5625
TX 20	868.5875
TX 21	868.6125
TX 22	868.6375
TX 23	868.6625
TX 24	868.6875
TX 25	868.7125
TX 26	868.7375
TX 27	868.7625
TX 28	868.7875
TX 29	868.8125
TX 30	868.8375
TX 31	868.8625
TX 32	868.8875
TX 33	868.9125
TX 34	868.9375
TX 35	868.9625
TX 36	868.9875
TX 37	869.0125

2. AERONAUTICAL BANDS

Band	Structure	EIRP	Emission	Channel Spacing	Remarks
'AERO'		14 dBW	AM	25 kHz	
	<div style="border: 1px solid black; padding: 5px; width: fit-content; margin: auto;"> <p style="margin: 0;">ACX1</p> <p style="margin: 0;">Simplex (R)</p> <p style="margin: 0;">ACX480</p> <p style="margin: 0;">ARX1</p> <p style="margin: 0;">Simplex (OR)</p> <p style="margin: 0;">ARX80</p> <p style="margin: 0;">AR1</p> <p style="margin: 0;">Base Tx</p> <p style="margin: 0;">AR23</p> <p style="margin: 0;">ARX81</p> <p style="margin: 0;">Simplex (OR)</p> <p style="margin: 0;">ARX191</p> <p style="margin: 0;">AR1</p> <p style="margin: 0;">Mobile Tx</p> <p style="margin: 0;">AR23</p> </div>				
		117.975 MHz			
		129.975 MHz			
		130.025			
		132.000 MHz			
		132.025 MHz			
		132.575 MHz			
		132.625 MHz			
		135.375 MHz			
		135.425 MHz			
		136.00 MHz			

2.1.1 AERONAUTICAL (R) BAND

<u>CHANNEL</u>	<u>FREQUENCY</u>
ACX1	118.00000
ACX2	118.02500
ACX3	118.05000
ACX4	118.07500
ACX5	118.10000
ACX6	118.12500
ACX7	118.15000
ACX8	118.17500
ACX9	118.20000
ACX10	118.22500
ACX11	118.25000
ACX12	118.27500
ACX13	118.30000
ACX14	118.32500
ACX15	118.35000
ACX16	118.37500
ACX17	118.40000
ACX18	118.42500
ACX19	118.45000
ACX20	118.47500
ACX21	118.50000
ACX22	118.52500
ACX23	118.55000
ACX24	118.57500

<u>CHANNEL</u>	<u>FREQUENCY</u>
ACX25	118.60000
ACX26	118.62500
ACX27	118.65000
ACX28	118.67500
ACX29	118.70000
ACX30	118.72500
ACX31	118.75000
ACX32	118.77500
ACX33	118.80000
ACX34	118.82500
ACX35	118.85000
ACX36	118.87500
ACX37	118.90000
ACX38	118.92500
ACX39	118.95000
ACX40	118.97500
ACX41	119.00000
ACX42	119.02500
ACX43	119.05000
ACX44	119.07500
ACX45	119.10000
ACX46	119.12500
ACX47	119.15000
ACX48	119.17500
ACX49	119.20000
ACX50	119.22500
ACX51	119.25000
ACX52	119.27500
ACX53	119.30000
ACX54	119.32500
ACX55	119.35000
ACX56	119.37500
ACX57	119.40000
ACX58	119.42500
ACX59	119.45000
ACX60	119.47500
ACX61	119.50000
ACX62	119.52500
ACX63	119.55000
ACX64	119.57500
ACX65	119.60000
ACX66	119.62500
ACX67	119.65000
ACX68	119.67500
ACX69	119.70000
ACX70	119.72500
ACX71	119.75000
ACX72	119.77500
ACX73	119.80000
ACX74	119.82500
ACX75	119.85000
ACX76	119.87500

<u>CHANNEL</u>	<u>FREQUENCY</u>
ACX77	119.90000
ACX78	119.92500
ACX79	119.95000
ACX80	119.97500
ACX81	120.00000
ACX82	120.02500
ACX83	120.05000
ACX84	120.07500
ACX85	120.10000
ACX86	120.12500
ACX87	120.15000
ACX88	120.17500
ACX89	120.20000
ACX90	120.22500
ACX91	120.25000
ACX92	120.27500
ACX93	120.30000
ACX94	120.32500
ACX95	120.35000
ACX96	120.37500
ACX97	120.40000
ACX98	120.42500
ACX99	120.45000
ACX100	120.47500
ACX101	120.50000
ACX102	120.52500
ACX103	120.55000
ACX104	120.57500
ACX105	120.60000
ACX106	120.62500
ACX107	120.65000
ACX108	120.67500
ACX109	120.70000
ACX110	120.72500
ACX111	120.75000
ACX112	120.77500
ACX113	120.80000
ACX114	120.82500
ACX115	120.85000
ACX116	120.87500
ACX117	120.90000
ACX118	120.92500
ACX119	120.95000
ACX120	120.97500
ACX121	121.00000
ACX122	121.02500
ACX123	121.05000
ACX124	121.07500
ACX125	121.10000
ACX126	121.12500
ACX127	121.15000
ACX128	121.17500

<u>CHANNEL</u>	<u>FREQUENCY</u>
ACX129	121.20000
ACX130	121.22500
ACX131	121.25000
ACX132	121.27500
ACX133	121.30000
ACX134	121.32500
ACX135	121.35000
ACX136	121.37500
ACX137	121.40000
ACX138	121.42500
ACX139	121.45000
ACX140	121.47500
ACX141	121.50000
ACX142	121.52500
ACX143	121.55000
ACX144	121.57500
ACX145	121.60000
ACX146	121.62500
ACX147	121.65000
ACX148	121.67500
ACX149	121.70000
ACX150	121.72500
ACX151	121.75000
ACX152	121.77500
ACX153	121.80000
ACX154	121.82500
ACX155	121.85000
ACX156	121.87500
ACX157	121.90000
ACX158	121.92500
ACX159	121.95000
ACX160	121.97500
ACX161	122.00000
ACX162	122.02500
ACX163	122.05000
ACX164	122.07500
ACX165	122.10000
ACX166	122.12500
ACX167	122.15000
ACX168	122.17500
ACX169	122.20000
ACX170	122.22500
ACX171	122.25000
ACX172	122.27500
ACX173	122.30000
ACX174	122.32500
ACX175	122.35000
ACX176	122.37500
ACX177	122.40000
ACX178	122.42500
ACX179	122.45000
ACX180	122.47500

<u>CHANNEL</u>	<u>FREQUENCY</u>
ACX181	122.50000
ACX182	122.52500
ACX183	122.55000
ACX184	122.57500
ACX185	122.60000
ACX186	122.62500
ACX187	122.65000
ACX188	122.67500
ACX189	122.70000
ACX190	122.72500
ACX191	122.75000
ACX192	122.77500
ACX193	122.80000
ACX194	122.82500
ACX195	122.85000
ACX196	122.87500
ACX197	122.90000
ACX198	122.92500
ACX199	122.95000
ACX200	122.97500
ACX201	123.00000
ACX202	123.02500
ACX203	123.05000
ACX204	123.07500
ACX205	123.10000
ACX206	123.12500
ACX207	123.15000
ACX208	123.17500
ACX209	123.20000
ACX210	123.22500
ACX211	123.25000
ACX212	123.27500
ACX213	123.30000
ACX214	123.32500
ACX215	123.35000
ACX216	123.37500
ACX217	123.40000
ACX218	123.42500
ACX219	123.45000
ACX220	123.47500
ACX221	123.50000
ACX222	123.52500
ACX223	123.55000
ACX224	123.57500
ACX225	123.60000
ACX226	123.62500
ACX227	123.65000
ACX228	123.67500
ACX229	123.70000
ACX230	123.72500
ACX231	123.75000
ACX232	123.77500

<u>CHANNEL</u>	<u>FREQUENCY</u>
ACX233	123.80000
ACX234	123.82500
ACX235	123.85000
ACX236	123.87500
ACX237	123.90000
ACX238	123.92500
ACX239	123.95000
ACX240	123.97500
ACX241	124.00000
ACX242	124.02500
ACX243	124.05000
ACX244	124.07500
ACX245	124.10000
ACX246	124.12500
ACX247	124.15000
ACX248	124.17500
ACX249	124.20000
ACX250	124.22500
ACX251	124.25000
ACX252	124.27500
ACX253	124.30000
ACX254	124.32500
ACX255	124.35000
ACX256	124.37500
ACX257	124.40000
ACX258	124.42500
ACX259	124.45000
ACX260	124.47500
ACX261	124.50000
ACX262	124.52500
ACX263	124.55000
ACX264	124.57500
ACX265	124.60000
ACX266	124.62500
ACX267	124.65000
ACX268	124.67500
ACX269	124.70000
ACX270	124.72500
ACX271	124.75000
ACX272	124.77500
ACX273	124.80000
ACX274	124.82500
ACX275	124.85000
ACX276	124.87500
ACX277	124.90000
ACX278	124.92500
ACX279	124.95000
ACX280	124.97500
ACX281	125.00000
ACX282	125.02500
ACX283	125.05000
ACX284	125.07500

<u>CHANNEL</u>	<u>FREQUENCY</u>
ACX285	125.10000
ACX286	125.12500
ACX287	125.15000
ACX288	125.17500
ACX289	125.20000
ACX290	125.22500
ACX291	125.25000
ACX292	125.27500
ACX293	125.30000
ACX294	125.32500
ACX295	125.35000
ACX296	125.37500
ACX297	125.40000
ACX298	125.42500
ACX299	125.45000
ACX300	125.47500
ACX301	125.50000
ACX302	125.52500
ACX303	125.55000
ACX304	125.57500
ACX305	125.60000
ACX306	125.62500
ACX307	125.65000
ACX308	125.67500
ACX309	125.70000
ACX310	125.72500
ACX311	125.75000
ACX312	125.77500
ACX313	125.80000
ACX314	125.82500
ACX315	125.85000
ACX316	125.87500
ACX317	125.90000
ACX318	125.92500
ACX319	125.95000
ACX320	125.97500
ACX321	126.00000
ACX322	126.02500
ACX323	126.05000
ACX324	126.07500
ACX325	126.10000
ACX326	126.12500
ACX327	126.15000
ACX328	126.17500
ACX329	126.20000
ACX330	126.22500
ACX331	126.25000
ACX332	126.27500
ACX333	126.30000
ACX334	126.32500
ACX335	126.35000
ACX336	126.37500

<u>CHANNEL</u>	<u>FREQUENCY</u>
ACX337	126.40000
ACX338	126.42500
ACX339	126.45000
ACX340	126.47500
ACX341	126.50000
ACX342	126.52500
ACX343	126.55000
ACX344	126.57500
ACX345	126.60000
ACX346	126.62500
ACX347	126.65000
ACX348	126.67500
ACX349	126.70000
ACX350	126.72500
ACX351	126.75000
ACX352	126.77500
ACX353	126.80000
ACX354	126.82500
ACX355	126.85000
ACX356	126.87500
ACX357	126.90000
ACX358	126.92500
ACX359	126.95000
ACX360	126.97500
ACX361	127.00000
ACX362	127.02500
ACX363	127.05000
ACX364	127.07500
ACX365	127.10000
ACX366	127.12500
ACX367	127.15000
ACX368	127.17500
ACX369	127.20000
ACX370	127.22500
ACX371	127.25000
ACX372	127.27500
ACX373	127.30000
ACX374	127.32500
ACX375	127.35000
ACX376	127.37500
ACX377	127.40000
ACX378	127.42500
ACX379	127.45000
ACX380	127.47500
ACX381	127.50000
ACX382	127.52500
ACX383	127.55000
ACX384	127.57500
ACX385	127.60000
ACX386	127.62500
ACX387	127.65000
ACX388	127.67500

<u>CHANNEL</u>	<u>FREQUENCY</u>
ACX389	127.70000
ACX390	127.72500
ACX391	127.75000
ACX392	127.77500
ACX393	127.80000
ACX394	127.82500
ACX395	127.85000
ACX396	127.87500
ACX397	127.90000
ACX398	127.92500
ACX399	127.95000
ACX400	127.97500
ACX401	128.00000
ACX402	128.02500
ACX403	128.05000
ACX404	128.07500
ACX405	128.10000
ACX406	128.12500
ACX407	128.15000
ACX408	128.17500
ACX409	128.20000
ACX410	128.22500
ACX411	128.25000
ACX412	128.27500
ACX413	128.30000
ACX414	128.32500
ACX415	128.35000
ACX416	128.37500
ACX417	128.40000
ACX418	128.42500
ACX419	128.45000
ACX420	128.47500
ACX421	128.50000
ACX422	128.52500
ACX423	128.55000
ACX424	128.57500
ACX425	128.60000
ACX426	128.62500
ACX427	128.65000
ACX428	128.67500
ACX429	128.70000
ACX430	128.72500
ACX431	128.75000
ACX432	128.77500
ACX433	128.80000
ACX434	128.82500
ACX435	128.85000
ACX436	128.87500
ACX437	128.90000
ACX438	128.92500
ACX439	128.95000
ACX440	128.97500

<u>CHANNEL</u>	<u>FREQUENCY</u>
ACX441	129.00000
ACX442	129.02500
ACX443	129.05000
ACX444	129.07500
ACX445	129.10000
ACX446	129.12500
ACX447	129.15000
ACX448	129.17500
ACX449	129.20000
ACX450	129.22500
ACX451	129.25000
ACX452	129.27500
ACX453	129.30000
ACX454	129.32500
ACX455	129.35000
ACX456	129.37500
ACX457	129.40000
ACX458	129.42500
ACX459	129.45000
ACX460	129.47500
ACX461	129.50000
ACX462	129.52500
ACX463	129.55000
ACX464	129.57500
ACX465	129.60000
ACX466	129.62500
ACX467	129.65000
ACX468	129.67500
ACX469	129.70000
ACX470	129.72500
ACX471	129.75000
ACX472	129.77500
ACX473	129.80000
ACX474	129.82500
ACX475	129.85000
ACX476	129.87500
ACX477	129.90000
ACX478	129.92500
ACX479	129.95000
ACX480	129.97500

2.1.2 AERONAUTICAL (OR) BAND

<u>CHANNEL</u>	<u>FREQUENCY</u>
ARX1	130.02500
ARX2	130.05000
ARX3	130.07500
ARX4	130.10000
ARX5	130.12500
ARX6	130.15000
ARX7	130.17500
ARX8	130.20000
ARX9	130.22500
ARX10	130.25000
ARX11	130.27500
ARX12	130.30000
ARX13	130.32500
ARX14	130.35000
ARX15	130.37500
ARX16	130.40000
ARX17	130.42500
ARX18	130.45000
ARX19	130.47500
ARX20	130.50000
ARX21	130.52500
ARX22	130.55000
ARX23	130.57500
ARX24	130.60000
ARX25	130.62500
ARX26	130.65000
ARX27	130.67500
ARX28	130.70000
ARX29	130.72500
ARX30	130.75000
ARX31	130.77500
ARX32	130.80000
ARX33	130.82500
ARX34	130.85000
ARX35	130.87500
ARX36	130.90000
ARX37	130.92500
ARX38	130.95000
ARX39	130.97500
ARX40	131.00000
ARX41	131.02500
ARX42	131.05000
ARX43	131.07500
ARX44	131.10000
ARX45	131.12500
ARX46	131.15000
ARX47	131.17500
ARX48	131.20000
ARX49	131.22500
ARX50	131.25000

<u>CHANNEL</u>	<u>FREQUENCY</u>
ARX51	131.27500
ARX52	131.30000
ARX53	131.32500
ARX54	131.35000
ARX55	131.37500
ARX56	131.40000
ARX57	131.42500
ARX58	131.45000
ARX59	131.47500
ARX60	131.50000
ARX61	131.52500
ARX62	131.55000
ARX63	131.57500
ARX64	131.60000
ARX65	131.62500
ARX66	131.65000
ARX67	131.67500
ARX68	131.70000
ARX69	131.72500
ARX70	131.75000
ARX71	131.77500
ARX72	131.80000
ARX73	131.82500
ARX74	131.85000
ARX75	131.87500
ARX76	131.90000
ARX77	131.92500
ARX78	131.95000
ARX79	131.97500
ARX80	132.00000
ARX81	132.62500
ARX82	132.65000
ARX83	132.67500
ARX84	132.70000
ARX85	132.72500
ARX86	132.75000
ARX87	132.77500
ARX88	132.80000
ARX89	132.82500
ARX90	132.85000
ARX91	132.87500
ARX92	132.90000
ARX93	132.92500
ARX94	132.95000
ARX95	132.97500
ARX96	133.00000
ARX97	133.02500
ARX98	133.05000
ARX99	133.07500
ARX100	133.10000
ARX101	133.12500

<u>CHANNEL</u>	<u>FREQUENCY</u>
ARX102	133.15000
ARX103	133.17500
ARX104	133.20000
ARX105	133.22500
ARX106	133.25000
ARX107	133.27500
ARX108	133.30000
ARX109	133.32500
ARX110	133.35000
ARX111	133.37500
ARX112	133.40000
ARX113	133.42500
ARX114	133.45000
ARX115	133.47500
ARX116	133.50000
ARX117	133.52500
ARX118	133.55000
ARX119	133.57500
ARX120	133.60000
ARX121	133.62500
ARX122	133.65000
ARX123	133.67500
ARX124	133.70000
ARX125	133.72500
ARX126	133.75000
ARX127	133.77500
ARX128	133.80000
ARX129	133.82500
ARX130	133.85000
ARX131	133.87500
ARX132	133.90000
ARX133	133.92500
ARX134	133.95000
ARX135	133.97500
ARX136	134.00000
ARX137	134.02500
ARX138	134.05000
ARX139	134.07500
ARX140	134.10000
ARX141	134.12500
ARX142	134.15000
ARX143	134.17500
ARX144	134.20000
ARX145	134.22500
ARX146	134.25000
ARX147	134.27500
ARX148	134.30000
ARX149	134.32500
ARX150	134.35000
ARX151	134.37500
ARX152	134.40000
ARX153	134.42500

<u>CHANNEL</u>	<u>FREQUENCY</u>
ARX154	134.45000
ARX155	134.47500
ARX156	134.50000
ARX157	134.52500
ARX158	134.55000
ARX159	134.57500
ARX160	134.60000
ARX161	134.62500
ARX162	134.65000
ARX163	134.67500
ARX164	134.70000
ARX165	134.72500
ARX166	134.75000
ARX167	134.77500
ARX168	134.80000
ARX169	134.82500
ARX170	134.85000
ARX171	134.87500
ARX172	134.90000
ARX173	134.92500
ARX174	134.95000
ARX175	134.97500
ARX176	135.00000
ARX177	135.02500
ARX178	135.05000
ARX179	135.07500
ARX180	135.10000
ARX181	135.12500
ARX182	135.15000
ARX183	135.17500
ARX184	135.20000
ARX185	135.22500
ARX186	135.25000
ARX187	135.27500
ARX188	135.30000
ARX189	135.32500
ARX190	135.35000
ARX191	135.37500

2.1.3 AERONAUTICAL REPEATERS

<u>CHANNEL</u>	<u>BASE TX FREQ</u>	<u>MOBILE TX FREQ</u>
AR 1	132.02500	135.42500
AR 2	132.05000	135.45000
AR 3	132.07500	135.47500
AR 4	132.10000	135.50000
AR 5	132.12500	135.52500
AR 6	132.15000	135.55000
AR 7	132.17500	135.57500
AR 8	132.20000	135.60000
AR 9	132.22500	135.62500
AR 10	132.25000	135.65000
AR 11	132.27500	135.67500
AR 12	132.30000	135.70000
AR 13	132.32500	135.72500
AR 14	132.35000	135.75000
AR 15	132.37500	135.77500
AR 16	132.40000	135.80000
AR 17	132.42500	135.82500
AR 18	132.45000	135.85000
AR 19	132.47500	135.87500
AR 20	132.50000	135.90000
AR 21	132.52500	135.92500
AR 22	132.55000	135.95000
AR 23	132.57500	135.97500

3. MARITIME MOBILE BANDS

3.1.1 MARITIME VHF BAND

Band	Structure	EIRP	Emission	Channel Spacing	Remarks
'MM'		Ship/Coast	FM	25 kHz	Refer to General User Licence for Maritime Purposes for designated use of each channel
	MM60 Ship Tx	156.0125 MHz 14 dBW	Repeater 14 dBW	25 kHz	
	MM07 MM67	156.350 MHz 156.375 MHz			
	Simplex				
	MM77 MM18	156.875 MHz 156.900 MHz			
	Ship Tx				
	MM91	157.575 MHz			
	MM60 Coast Tx	160.625 MHz			
	MM65	160.875 MHz			
	MM66 Coast Tx	160.925 MHz			
	MM07	160.950 MHz			
	MM18 Coast Tx	161.500 MHz			
	MM91	162.200 MHz			

<u>CHANNEL</u>	<u>SHIP TX FREQ</u>	<u>COAST TX FREQ</u>
MM60	156.025	160.625
MM01	156.050	160.650
MM61	156.075	160.675
MM02	156.100	160.700
MM62	156.125	160.725
MM03	156.150	160.750
MM63	156.175	160.775
MM04	156.200	160.800
MM64	156.225	160.825
MM05	156.250	160.850
MM65	156.275	160.875
MM06	156.300	
MM66	156.325	160.925
MM07	156.350	160.950
MM67	156.375	

<u>CHANNEL</u>	<u>SHIP TX FREQ</u>	<u>COAST TX FREQ</u>
MM08	156.400	
MM68	156.425	
MM09	156.450	
MM69	156.475	
MM10	156.500	
MM70	156.525	
MM11	156.550	
MM71	156.575	
MM12	156.600	
MM72	156.625	
MM13	156.650	
MM73	156.675	
MM14	156.700	
MM74	156.725	
MM15	156.750	
MM75	156.775	
MM16	156.800	
MM76	156.825	
MM17	156.850	
MM77	156.875	
MM18	156.900	161.500
MM78	156.925	161.525
MM19	156.950	161.550
MM79	156.975	161.575
MM20	157.000	161.600
MM80	157.025	161.625
MM21	157.050	161.650
MM81	157.075	161.675
MM22	157.100	161.700
MM82	157.125	161.725
MM23	157.150	161.750
MM83	157.175	161.775
MM24	157.200	161.800
MM84	157.225	161.825
MM25	157.250	161.850
MM85	157.275	161.875
MM26	157.300	161.900
MM86	157.325	161.925
MM27	157.350	161.950
MM87	157.375	
MM28	157.400	162.000
MM88	157.425	
AIS1	161.975	161.975
AIS2	162.025	162.025
MM29	157.450	162.050
MM89	157.475	162.075
MM30	157.500	162.100
MM90	157.525	162.125
MM31	157.550	162.150
MM91	157.575	162.175

4. MISCELLANEOUS BANDS

4.1.1 PERSONAL RADIO SERVICE BAND

<u>CHANNEL</u>	<u>BASE TX or SIMPLEX FREQ</u>	<u>MOBILE TX FREQ</u>
1	476.425	477.175
2	476.450	477.200
3	476.475	477.225
4	476.500	477.250
5	476.525	477.275
6	476.550	477.300
7	476.575	477.325
8	476.600	477.350
9	476.625	
10	476.650	
11	476.675	
12	476.700	
13	476.725	
14	476.750	
15	476.775	
16	476.800	
17	476.825	
18	476.850	
19	476.875	
20	476.900	
21	476.925	
22	476.950	
23	476.975	
24	477.000	
25	477.025	
26	477.050	
27	477.075	
28	477.100	
29	477.125	
30	477.150	
31	477.175	
32	477.200	
33	477.225	
34	477.250	
35	477.275	
36	477.300	
37	477.325	
38	477.350	
39	477.375	
40	477.400	

4.1.2 TELECOMMAND AND TELEMETRY BAND

Telecommand: The use of telecommunications for the transmission of signals to initiate, modify or terminate functions of equipment at a distance.

Telemetry: The use of telecommunications for automatically indicating or recording measurements at a distance from the measuring instrument

ISM (Industrial, Scientific and Medical) Bands are also available for Telecommand and Telemetry.

The Maximum permitted power is:
 5.0 watts (e.i.r.p) for ISM, A, B, C, D, and E Bands.
 0.5 watts (e.i.r.p) for the F Bands.

BAND A		BAND B		BAND C	
(29.800 - 30.000 MHz)		(36.000 - 36.600 MHz)		(160.100 - 160.600 MHz)	
Channel	Frequency (MHz)	Channel	Frequency (MHz)	Channel	Frequency (MHz)
TT1A	29.835	TT1 B	36.050	TT1 C	160.1375
TT2A	29.845	TT2B	36.150	TT2C	160.1625
TT3A	29.855	TT3B	36.250	TT3C	160.1875
TT4A	29.865	TT4B	36.350	TT4C	160.2125
TT5A	29.875	TT5B	36.450	TT5C	160.2375
TT6A	29.885	TT6B	36.550	TT6C	160.2625
TT7A	29.915			TT7C	160.2875
TT8A	29.925			TT8C	160.3125
TT8A	29.925			TT8C	160.3125
TT9A	29.935			TT9C	160.3375
TT10A	29.945			TT10C	160.3625
TT11A	29.955			TT11C	160.3875
TT12A	29.965			TT12C	160.4125
TT13A	29.975			TT13C	160.4375
TT14A	29.985			TT14C	160.4625
TT15A	29.995			TT15C	160.4875
				TT16C	160.5125
				TT17C	160.5375
				TT18C	160.5625
				TT19C	160.5875

Bandwidth: 10 kHz	Bandwidth: 20 kHz	Bandwidth: 20 kHz
Tolerance: +/-1.5 kHz	Tolerance: +/-2.5 kHz	Tolerance: +/-2.5 kHz

BAND D (466.800 - 466.850 MHz & 471 - 471.5 MHz)		BAND E (470.000 - 470.475 MHz) Medical Telemetry only (ie.Hospital ECG monitoring)		BAND F (40.510 - 40.770 MHz) Aeronautical Model Control Only	
Channel	Frequency (MHz)	Channel	Frequency (MHz)	Channel	Frequency (MHz)
TT1 D	466.8125	TT1 E	470.0250	TT1 F	40.510
TT2D	466.8375	TT2E	470.0500	TT2F	40.530
TT3D	471.0250	TT3E	470.0750	TT3F	40.550
TT4D	471.0500	TT4E	470.1000	TT4F	40.570
TT5D	471.0750	TT5E	470.1250	TT5F	40.590
TT6D	471.1000	TT6E	470.1500	TT6F	40.610
TT7D	471.1250	TT7E	470.1750	TT7F	40.630
TT8D	471.1500	TT8E	470.2000	TT8F	40.650
TT9D	471.1750	TT9E	470.2250	TT9F	40.710
TT10D	471.2000	TT10E	470.2500	TT10F	40.730
TT11 D	471.2250	TT11E	470.2750	TT11 F	40.750
TT12D	471.2500	TT12E	470.3000	TT12F	40.770
TT13D	471.2750	TT13E	470.3250		
TT14D	471.3000	TT14E	470.3500		
TT15D	471.3250	TT15E	470.3750		
TT16D	471.3500	TT16E	470.4000		
TT17D	471.3750	TT17E	470.4250		
TT18D	471.4000	TT18E	470.4500		
TT19D	471.4250	TT19E	470.4750		
TT20D	471.4500				
TT21 D	471.4750				
Bandwidth:	20 kHz	Bandwidth:	20 kHz	Bandwidth:	20 kHz
Tolerance:	+/-2.5 kHz	Tolerance:	+/-2.5 kHz	Tolerance:	+/-2.5 kHz

Centre Frequency	Bandwidth	Centre Frequency	Bandwidth
6.780 MHz	30 kHz	2450 MHz	100 MHz
13.560 MHz	14 kHz	5800 MHz	150 MHz
27.120 MHz	326 kHz	24.125 GHz	250 MHz
35.700 MHz	600 kHz	61.250 GHz	500 MHz
40.680 MHz	40 kHz	122.50 GHz	1000 MHz
925 MHz	8 MHz	245.00 GHz	2000 MHz

4.1.3 RADIO PAGING BAND

The Maximum permitted power is: 5.0 watts (mean)

Frequency Tolerance +/- 2.5 kHz

Band A (26.95 --27.30 MHz)		Band B (31.30—31.60 MHz)		Band C (160.300--160.600 MHz)		Band D (458.540--458.610 MHz)	
Chan	Freq (MHz)	Chan	Freq (MHz)	Chan	Freq (MHz)	Chan	Freq (MHz)
RP1A	26.978	RP 1B	31.325	RP 1C	160.3375	RP1D	458.550
RP2A	27.003	RP 2B	31.350	RP 2C	160.3625	RP2D	458.600
RP3A	27.028	RP 3B	31.375	RP 3C	160.3875		
RP4A	27.053	RP 4B	31.400	RP 4C	160.4125		
RP5A	27.078	RP 5B	31.425	RP 5C	160.4375		
RP6A	27.103	RP 6B	31.450	RP 6C	160.4625		
RP7A	27.137	RP 7B	31.475	RP 7C	160.4875		
RP8A	27.162	RP 8B	31.500	RP 8C	160.5125		
RP9A	27.187	RP 9B	31.525	RP 9C	160.5375		
RP10A	27.212	RP10B	31.550	RP10C	160.5625		
RP11A	27.237	RP11B	31.575	RP11C	160.5875		
RP12A	27.262						

5. APPENDIX

5.1 CTCSS

5.1.1 Tone Groups

5.1.1.1 Group A

Code A0	67.0 Hz	Code A9	151.4 Hz
Code A1	77.0 Hz	Code A10	162.2 Hz
Code A2	88.5 Hz	Code A11	173.8 Hz
Code A3	100.0 Hz	Code A12	186.2 Hz
Code A4	107.2 Hz	Code A13	203.5 Hz
Code A5	114.8 Hz	Code A14	218.1 Hz
Code A6	123.0 Hz	Code A15	233.6 Hz
Code A7	131.8 Hz	Code A16	250.3 Hz
Code A8	141.3 Hz		

5.1.1.2 Group B

Code B1	71.9 Hz	Code B9	146.2 Hz
Code B2	82.5 Hz	Code B10	156.7 Hz
Code B3	94.8 Hz	Code B11	167.9 Hz
Code B4	103.5 Hz	Code B12	179.9 Hz
Code B5	110.9 Hz	Code B13	192.8 Hz
Code B6	118.8 Hz	Code B14	210.7 Hz
Code B7	127.3 Hz	Code B15	225.7 Hz
Code B8	136.5 Hz	Code B16	241.8 Hz

5.1.2 A/B Areas

Area	Tone Group
Whangarei	B
Auckland	A
Hamilton	B
Rotorua	B
Tauranga	B
New Plymouth	B
Gisborne	A
Napier	B
Palmerston North	B
Wanganui	A
Masterton	B
Wellington	A
Nelson	A
Christchurch	A
West Coast	A
Timaru	B
Dunedin	A
Invercargill	B