

Ref	IPN	Description
	220-01603-13	SMT Alloy Lead Free Solder PCB T/Orca 400-470MHz Mn
+SPKR	356-01070-00	PIN spr cntct TOP spkr taped
AUDIO	319-01212-01	SHLD aud T/Orca
BATTERY- BATTERY+	356-01070-00	PIN spr cntct TOP spkr taped
BL301	050-10061-72	BALUN mxr 617dB-A0229
BL302	050-10061-72	BALUN mxr 617dB-A0229
C1	018-16100-00	CAP 0603 100n 16V x7R ±10%
C10	018-15100-00	CAP 0603 10n 50V X7R ±10%
C100	018-13150-00	CAP 0603 150p 50V NPO ±5%
C101	018-14100-00	CAP 0603 1n 50V X7R ±10%
C102	018-12150-10	CAP 0603 15p 50V NPO ±1%
C103	018-14100-00	CAP 0603 1n 50V X7R ±10%
C104	018-16100-00	CAP 0603 100n 16V x7R ±10%
C105	018-14100-00	CAP 0603 1n 50V X7R ±10%
C106	018-14100-00	CAP 0603 1n 50V X7R ±10%
C11	018-15100-00	CAP 0603 10n 50V X7R ±10%
C110	018-12100-10	CAP 0603 10p 50V NPO ±0.1pF
C111	018-12270-10	CAP 0603 27p 50V NPO ±1%
C112	018-15100-00	CAP 0603 10n 50V X7R ±10%
C113	018-15100-00	CAP 0603 10n 50V X7R ±10%
C114	018-16100-00	CAP 0603 100n 16V x7R ±10%
C115	018-15100-00	CAP 0603 10n 50V X7R ±10%
C116	018-13100-00	CAP 0603 100p 50V NPO ±5%
C117	018-12470-10	CAP 0603 47p 50V NPO ±1%
C120	015-23470-08	CAP cer 470p 50V 10% 0805 X7R
C121	018-16100-00	CAP 0603 100n 16V x7R ±10%
C122	018-15100-00	CAP 0603 10n 50V X7R ±10%
C123	015-22330-05	CAP cer 33p ±0.1pF 200V 0805
C124	015-22390-05	CAP cer 39p 200V 1% 0805 GRM40
C125	018-16100-00	CAP 0603 100n 16V x7R ±10%
C126	018-14100-00	CAP 0603 1n 50V X7R ±10%
C130	015-07470-20	CAP cer 4u7 25V 10% 1206 X7R
C131	018-15100-00	CAP 0603 10n 50V X7R ±10%
C132	018-15100-00	CAP 0603 10n 50V X7R ±10%
C133	015-23150-01	CAP cer 150p NPO 50V 5% 0805
C135	015-22270-05	CAP cer 27p ±0.1pF 200V 0805
C136	018-15100-00	CAP 0603 10n 50V X7R ±10%
C137	015-22120-05	CAP cer 12p NPO 200V 1% 0805
C138	015-22150-05	CAP cer 15p 200V 1% 0805 GRM40
C140	018-16100-00	CAP 0603 100n 16V x7R ±10%
C141	015-22270-05	CAP cer 27p ±0.1pF 200V 0805
C143	018-11330-10	CAP 0603 3p3 50V NPO ±0.1pF
C144	015-21820-05	CAP cer 8p2 ±0.1pF 200V 0805
C145	015-21330-05	CAP cer 3p3 ±0.1pF 200V 0805
C146	018-15100-00	CAP 0603 10n 50V X7R ±10%
C147	018-15270-00	CAP 0603 27n 50V X7R ±10%
C15	018-14100-00	CAP 0603 1n 50V X7R ±10%
C150	018-13100-10	CAP 0603 100p 50V NPO ±1%
C151	015-22100-05	CAP cer 10p ±0.1pF 200V 0805
C152	015-07470-20	CAP cer 4u7 25V 10% 1206 X7R
C153	015-21820-05	CAP cer 8p2 ±0.1pF 200V 0805
C154	018-15100-00	CAP 0603 10n 50V X7R ±10%
C155	018-13100-00	CAP 0603 100p 50V NPO ±5%
C156	018-15100-00	CAP 0603 10n 50V X7R ±10%
C157	018-12560-10	CAP 0603 56p 50V NPO ±1%
C16	018-13150-00	CAP 0603 150p 50V NPO ±5%
C160	015-23100-01	CAP cer 100p NPO 50V 5% 0805
C161	018-14100-00	CAP 0603 1n 50V X7R ±10%
C162	015-21330-05	CAP cer 3p3 ±0.1pF 200V 0805
C163	018-16100-00	CAP 0603 100n 16V x7R ±10%
C164	015-21470-05	CAP cer 4p7 ±0.1pF 200V 0805
C165	015-21470-05	CAP cer 4p7 ±0.1pF 200V 0805
C166	015-21330-05	CAP cer 3p3 ±0.1pF 200V 0805
C170	015-21470-05	CAP cer 4p7 ±0.1pF 200V 0805
C171	018-14100-00	CAP 0603 1n 50V X7R ±10%
C172	015-21390-05	CAP cer 3p9 ±0.1pF 200V 0805
C173	015-21270-05	CAP cer 2p7 ±0.1pF 200V 0805
C2	018-15470-00	CAP 0603 47n 16V X7R ±10%
C200	018-14100-00	CAP 0603 1n 50V X7R ±10%
C202	018-16100-00	CAP 0603 100n 16V x7R ±10%
C208	015-07470-20	CAP cer 4u7 25V 10% 1206 X7R

Ref	IPN	Description
C209	018-16100-00	CAP 0603 100n 16V x7R ±10%
C210	018-16100-00	CAP 0603 100n 16V x7R ±10%
C211	018-16100-00	CAP 0603 100n 16V x7R ±10%
C212	018-14100-00	CAP 0603 1n 50V X7R ±10%
C213	018-14100-00	CAP 0603 1n 50V X7R ±10%
C214	018-13150-00	CAP 0603 150p 50V NPO ±5%
C215	018-13150-00	CAP 0603 150p 50V NPO ±5%
C216	018-13150-00	CAP 0603 150p 50V NPO ±5%
C217	018-15100-00	CAP 0603 10n 50V X7R ±10%
C218	014-07100-02	CAP tant 1u0 16V 10% A
C219	013-06330-01	CAP 330n 16V 6x4mm
C220	018-15100-00	CAP 0603 10n 50V X7R ±10%
C222	013-06100-01	CAP 100n 63V 5% CF1812
C223	018-13470-00	CAP 0603 470p 50V X7R ±10%
C226	018-16100-00	CAP 0603 100n 16V x7R ±10%
C229	018-14100-00	CAP 0603 1n 50V X7R ±10%
C240	018-16100-00	CAP 0603 100n 16V x7R ±10%
C241	018-15100-00	CAP 0603 10n 50V X7R ±10%
C242	015-07470-20	CAP cer 4u7 25V 10% 1206 X7R
C246	018-14100-00	CAP 0603 1n 50V X7R ±10%
C247	014-07470-05	CAP tant 4u7 16V 10% A
C270	018-16100-00	CAP 0603 100n 16V x7R ±10%
C271	018-16100-00	CAP 0603 100n 16V x7R ±10%
C272	018-16100-00	CAP 0603 100n 16V x7R ±10%
C273	018-15100-00	CAP 0603 10n 50V X7R ±10%
C274	018-15100-00	CAP 0603 10n 50V X7R ±10%
C275	018-13150-00	CAP 0603 150p 50V NPO ±5%
C276	018-16100-00	CAP 0603 100n 16V x7R ±10%
C278	018-13150-00	CAP 0603 150p 50V NPO ±5%
C279	018-16100-00	CAP 0603 100n 16V x7R ±10%
C280	015-07220-08	CAP cer 2u2 16V 10% 1206 X7R
C3	018-16100-00	CAP 0603 100n 16V x7R ±10%
C300	018-13100-00	CAP 0603 100p 50V NPO ±5%
C301	018-11470-10	CAP 0603 4p7 50V NPO ±0.1pF
C302	018-11470-10	CAP 0603 4p7 50V NPO ±0.1pF
C303	018-11330-10	CAP 0603 3p3 50V NPO ±0.1pF
C304	018-12270-10	CAP 0603 27p 50V NPO ±1%
C305	018-11390-10	CAP 0603 3p9 50V NPO ±0.1pF
C306	018-11470-10	CAP 0603 4p7 50V NPO ±0.1pF
C309	018-15100-00	CAP 0603 10n 50V X7R ±10%
C310	018-13150-00	CAP 0603 150p 50V NPO ±5%
C311	018-14100-00	CAP 0603 1n 50V X7R ±10%
C312	018-14100-00	CAP 0603 1n 50V X7R ±10%
C315	018-11330-10	CAP 0603 3p3 50V NPO ±0.1pF
C316	018-11470-10	CAP 0603 4p7 50V NPO ±0.1pF
C317	018-11680-10	CAP 0603 6p8 50V NPO ±0.1pF
C318	018-12270-10	CAP 0603 27p 50V NPO ±1%
C319	018-11180-10	CAP 0603 1p8 50V NPO ±0.1pF
C320	018-11270-10	CAP 0603 2p7 50V NPO ±0.1pF
C325	018-15100-00	CAP 0603 10n 50V X7R ±10%
C326	018-11330-10	CAP 0603 3p3 50V NPO ±0.1pF
C326A	018-11390-10	CAP 0603 3p9 50V NPO ±0.1pF
C327	018-12270-10	CAP 0603 27p 50V NPO ±1%
C328	018-11270-10	CAP 0603 2p7 50V NPO ±0.1pF
C329	018-11330-10	CAP 0603 3p3 50V NPO ±0.1pF
C331	018-12120-10	CAP 0603 12p 50V NPO ±1%
C333	018-15100-00	CAP 0603 10n 50V X7R ±10%
C334	018-15100-00	CAP 0603 10n 50V X7R ±10%
C335	018-12150-10	CAP 0603 15p 50V NPO ±1%
C336	018-11100-10	CAP 0603 1p0 50V NPO ±0.1pF
C337	018-15100-00	CAP 0603 10n 50V X7R ±10%
C338	018-15100-00	CAP 0603 10n 50V X7R ±10%
C339	018-15100-00	CAP 0603 10n 50V X7R ±10%
C340	018-15100-00	CAP 0603 10n 50V X7R ±10%
C342	018-12470-10	CAP 0603 47p 50V NPO ±1%
C343	018-12180-10	CAP 0603 18p 50V NPO ±1%
C344	018-12220-10	CAP 0603 22p 50V NPO ±1%
C345	018-12100-10	CAP 0603 10p 50V NPO ±0.1pF
C346	018-13100-10	CAP 0603 100p 50V NPO ±1%
C350	018-15100-00	CAP 0603 10n 50V X7R ±10%
C351	018-12150-10	CAP 0603 15p 50V NPO ±1%
C352	018-12330-10	CAP 0603 33p 50V NPO ±1%
C353	018-15100-00	CAP 0603 10n 50V X7R ±10%
C355	018-14100-00	CAP 0603 1n 50V X7R ±10%
C356	018-16100-00	CAP 0603 100n 16V x7R ±10%
C357	018-16100-00	CAP 0603 100n 16V x7R ±10%
C358	018-16100-00	CAP 0603 100n 16V x7R ±10%

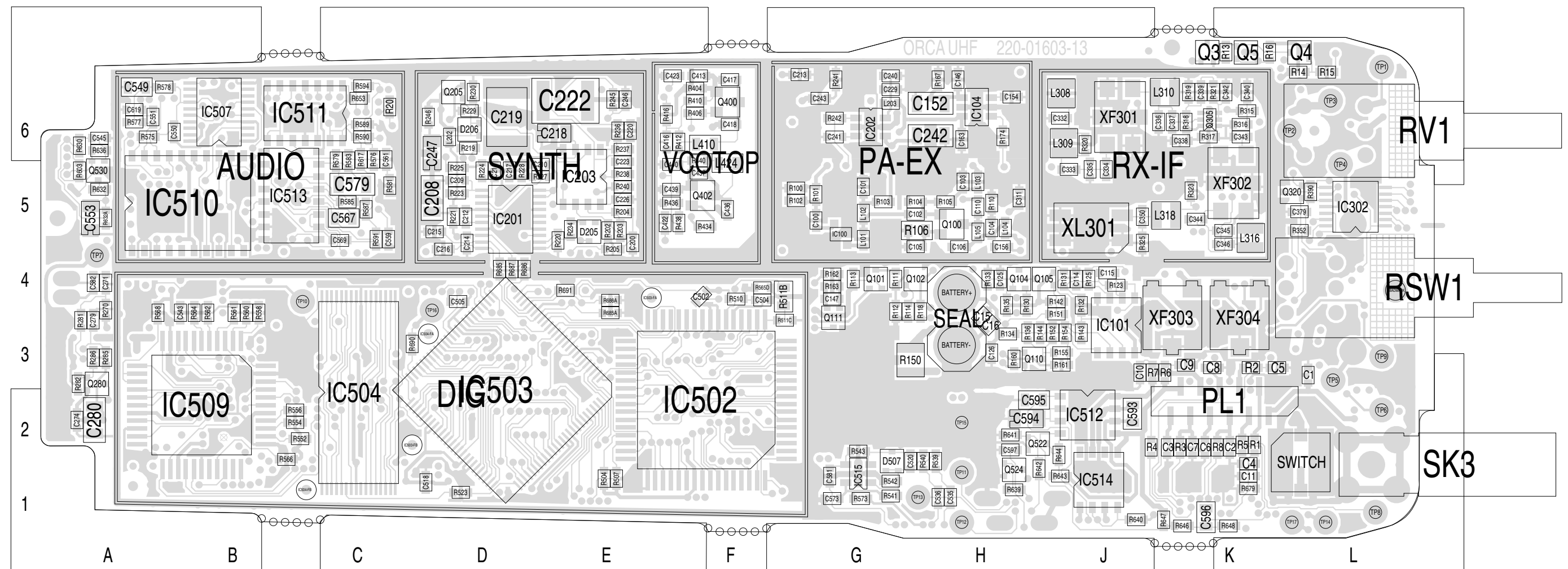
Ref	IPN	Description
C359	018-16100-00	CAP 0603 100n 16V x7R ±10%
C360	018-16100-00	CAP 0603 100n 16V x7R ±10%
C362	018-16100-00	CAP 0603 100n 16V x7R ±10%
C363	015-07470-20	CAP cer 4u7 25V 10% 1206 X7R
C364	014-07100-02	CAP tant 1u0 16V 10% A
C365	018-16100-00	CAP 0603 100n 16V x7R ±10%
C366	018-14100-00	CAP 0603 1n 50V X7R ±10%
C367	018-13180-00	CAP 0603 180p 50V NPO ±5%
C368	018-13180-00	CAP 0603 180p 50V NPO ±5%
C369	018-13470-00	CAP 0603 470p 50V X7R ±10%
C370	018-12220-10	CAP 0603 22p 50V NPO ±1%
C372	018-12330-10	CAP 0603 33p 50V NPO ±1%
C375	015-07470-20	CAP cer 4u7 25V 10% 1206 X7R
C376	014-07100-02	CAP tant 1u0 16V 10% A
C378	018-15100-00	CAP 0603 10n 50V X7R ±10%
C379	018-15100-00	CAP 0603 10n 50V X7R ±10%
C384	018-15100-00	CAP 0603 10n 50V X7R ±10%
C385	018-16100-00	CAP 0603 100n 16V x7R ±10%
C4	018-14100-00	CAP 0603 1n 50V X7R ±10%
C400	018-12120-10	CAP 0603 12p 50V NPO ±1%
C401	018-11560-10	CAP 0603 5p6 50V NPO ±0.1pF
C402	018-11330-10	CAP 0603 3p3 50V NPO ±0.1pF
C404	018-11470-10	CAP 0603 4p7 50V NPO ±0.1pF
C406	018-13150-00	CAP 0603 150p 50V NPO ±5%
C408	018-13150-00	CAP 0603 150p 50V NPO ±5%
C410	018-11820-10	CAP 0603 8p2 50V NPO ±0.1pF
C412	018-13150-00	CAP 0603 150p 50V NPO ±5%
C413	018-16100-00	CAP 0603 100n 16V x7R ±10%
C416	018-15100-00	CAP 0603 10n 50V X7R ±10%
C417	018-11100-10	CAP 0603 1p0 50V NPO ±0.1pF
C418	018-11120-10	CAP 0603 1p2 50V NPO ±0.1pF
C419	018-11600-10	CAP 0603 6p0 50V NPO ±0.1pF
C422	018-13150-00	CAP 0603 150p 50V NPO ±5%
C423	018-13150-00	CAP 0603 150p 50V NPO ±5%
C424	018-13150-00	CAP 0603 150p 50V NPO ±5%
C426	018-13150-00	CAP 0603 150p 50V NPO ±5%
C430	018-11820-10	CAP 0603 8p2 50V NPO ±0.1pF
C431	018-11600-10	CAP 0603 6p0 50V NPO ±0.1pF
C432	018-13150-00	CAP 0603 150p 50V NPO ±5%
C436	018-11150-10	CAP 0603 1p5 50V NPO ±0.1pF
C437	018-11050-00	CAP 0603 0p5 50V NPO ±.25pF
C439	018-16100-00	CAP 0603 100n 16V x7R ±10%
C440	018-15100-00	CAP 0603 10n 50V X7R ±10%
C442	018-13150-00	CAP 0603 150p 50V NPO ±5%
C446	018-13150-00	CAP 0603 150p 50V NPO ±5%
C5	018-15100-00	CAP 0603 10n 50V X7R ±10%
C502	018-16100-00	CAP 0603 100n 16V x7R ±10%
C504	018-16100-00	CAP 0603 100n 16V x7R ±10%
C505	018-16100-00	CAP 0603 100n 16V x7R ±10%
C506	018-16100-00	CAP 0603 100n 16V x7R ±10%
C506A	018-13150-00	CAP 0603 150p 50V NPO ±5%
C512	018-1	

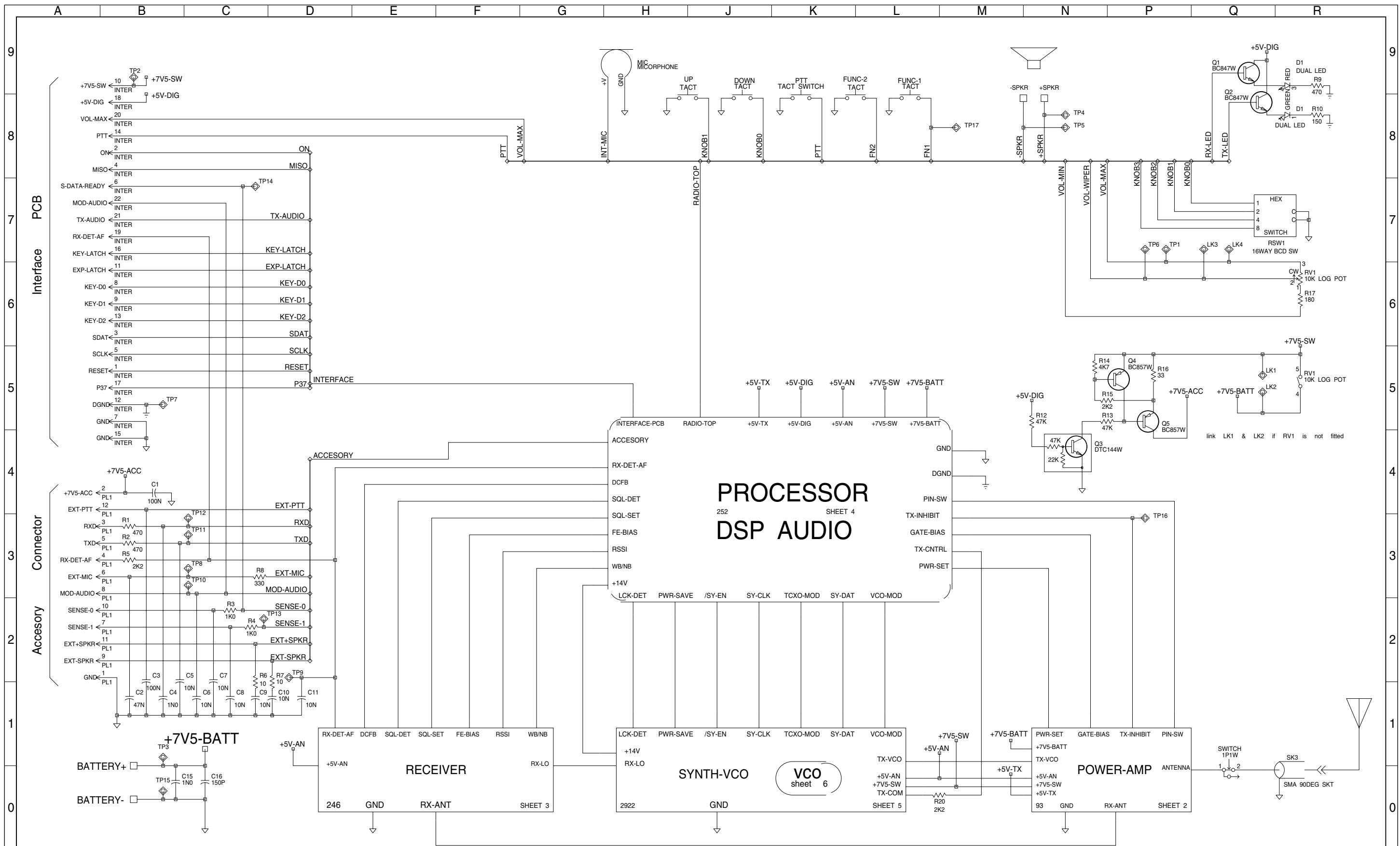
Ref	IPN	Description	Ref	IPN	Description	Ref	IPN	Description	Ref	IPN	Description
C561	018-16100-00	CAP 0603 100n 16V x7R ±10%	IC504	002-12902-00	IC 29E020 flash 120nS TSOP	Q3	000-11472-20	XSTR BTA7K BE22K NPN dgtl	R150	036-00100-04	RES 1210 0R1 5% 0.5W
C566	018-13390-00	CAP 0603 390p 50V X7R ±10%	IC506	002-11125-00	IC TK11250 5V rgltr 380mA	Q301	000-10941-00	XSTR SMD PBR941 NPN SOT23	R151	038-15100-10	RES 0603 10k 1% 1/10W
C567	015-26220-18	CAP cer 220n 50V 10% 0805 X7R	IC507	002-10126-71	IC DS1868 dgtl pot TSOP20	Q305	002-10080-00	IC UPA800T dual 25C5008 xstr	R152	038-16470-00	RES 0603 470k 5% 1/10W
C568	018-14100-00	CAP 0603 1n 50V X7R ±10%	IC508	002-16235-40	IC M62354GP 8bit 6chnl D-A	Q307	000-10084-71	XSTR BC847BW NPN SOT323	R153	036-03220-07	RES 2010 220R 5% 0.5W
C569	018-15270-00	CAP 0603 27n 50V X7R ±10%	IC509	002-18932-20	IC Z89321-20FSC mask DSP v3.21	Q309	000-10418-10	XSTR 25C4181 N SOT323 HB	R154	038-15100-10	RES 0603 10k 1% 1/10W
C571	018-15470-00	CAP 0603 47n 16V X7R ±10%	IC510	002-11454-80	IC MC145480DW PCM codec	Q320	000-10084-71	XSTR BC847BW NPN SOT323	R155	038-15100-20	RES 0603 10k 0.5% 1/10W
C572	015-26100-08	CAP cer 100n 50V 10% 0805 X7R	IC511	002-10324-10	IC LMV324 quad OP-Amp SO14	Q321	000-10084-71	XSTR BC847BW NPN SOT323	R156	038-12100-10	RES 0603 10R 1% 1/10W
C573	018-16100-00	CAP 0603 100n 16V x7R ±10%	IC512	002-10854-10	IC TDA8541T 1W aud Amp	Q4	000-10085-71	XSTR SMD BC857BW PNP SOT323	R16	038-12330-00	RES 0603 33R 5% 1/10W
C574	018-15100-00	CAP 0603 10n 50V X7R ±10%	IC513	002-10040-53	IC 4053B break B4 make	Q400	000-10941-00	XSTR SMD PBR941 NPN SOT23	R160	038-14470-10	RES 0603 4k7 1% 1/10W
C576	015-27100-08	CAP cer 1uF 16V 10% 0805 X7R	IC514	002-10021-00	IC PHN210 dual N/chnl enh Mfet	Q402	000-10941-00	XSTR SMD PBR941 NPN SOT23	R161	038-15270-20	RES 0603 27k 0.5% 1/10W
C578	015-26100-08	CAP cer 100n 50V 10% 0805 X7R	IC515	002-10003-21	IC LMV321 Sngl Op Amp SOT23-5	Q404	000-10085-71	XSTR SMD BC857BW PNP SOT323	R162	038-16150-10	RES 0603 150k 1% 1/10W
C579	036-00000-01	RES 1206 0R 5% 0.25W	INTER	240-02010-93	CONN 22wy FFC RA Molex SMD	Q406	000-10085-71	XSTR SMD BC857BW PNP SOT323	R163	038-15330-10	RES 0603 33k 1% 1/10W
C581	018-15470-00	CAP 0603 47n 16V X7R ±10%				Q5	000-10085-71	XSTR SMD BC857BW PNP SOT323	R167	038-14100-10	RES 0603 1k0 1% 1/10W
C582	018-15470-00	CAP 0603 47n 16V X7R ±10%	L101	059-15560-00	IND 0603CS 56nH 5%	Q502	000-10084-71	XSTR BC847BW NPN SOT323	R169	038-15270-00	RES 0603 27k 5% 1/10W
C583	015-27100-08	CAP cer 1uF 16V 10% 0805 X7R	L102	057-11220-02	IND 0603 2200R BLM11A221 EMI	Q503	000-10085-71	XSTR SMD BC857BW PNP SOT323	R17	038-13180-10	RES 0603 180R 1% 1/10W
C588	015-07470-20	CAP cer 4u7 25V 10% 1206 X7R	L103	057-11220-02	IND 0603 2200R BLM11A221 EMI	Q504	000-10084-71	XSTR BC847BW NPN SOT323	R171	038-13680-00	RES 0603 680R 5% 1/10W
C590	018-16100-00	CAP 0603 100n 16V x7R ±10%	L104	057-11220-02	IND 0603 2200R BLM11A221 EMI	Q505	000-10084-71	XSTR BC847BW NPN SOT323	R172	038-13680-00	RES 0603 680R 5% 1/10W
C593	015-27100-08	CAP cer 1uF 16V 10% 0805 X7R	L105	059-15120-00	IND 0603HS 12nH 5%	Q506	000-10084-71	XSTR BC847BW NPN SOT323	R173	038-13680-00	RES 0603 680R 5% 1/10W
C594	014-07100-02	CAP tant 1u0 16V 10% A	L110	059-15047-00	IND 0603CS 4n7 5%	Q513	000-10084-71	XSTR BC847BW NPN SOT323	R174	038-15150-10	RES 0603 15k 1% 1/10W
C595	015-26220-18	CAP cer 220n 50V 10% 0805 X7R	L111	057-10080-06	IND 1806 BLM41-P800 1A EMI	Q514	000-10084-71	XSTR BC847BW NPN SOT323	R2	038-13470-00	RES 0603 470R 5% 1/10W
C596	015-26220-18	CAP cer 220n 50V 10% 0805 X7R	L112	059-15680-05	IND 0805CS 68nH 5%	Q516	000-10085-71	XSTR SMD BC857BW PNP SOT323	R20	038-14220-00	RES 0603 2k2 5% 1/10W
C597	018-16100-00	CAP 0603 100n 16V x7R ±10%	L113	036-10000-00	RES 0805 OR 1/8W	Q517	000-10085-71	XSTR SMD BC857BW PNP SOT323	R202	038-15270-20	RES 0603 27k 0.5% 1/10W
C6	018-15100-00	CAP 0603 10n 50V X7R ±10%	L114	036-10000-00	RES 0805 OR 1/8W	Q518	000-10084-71	XSTR BC847BW NPN SOT323	R203	038-15470-10	RES 0603 47k 1% 1/10W
C608	014-07470-05	CAP tant 4u7 16V 10% A	L115	057-10081-06	IND 1806 BLM41P750S EMI suppn	Q519	000-10084-71	XSTR BC847BW NPN SOT323	R204	038-14100-10	RES 0603 1k0 1% 1/10W
C610	018-15100-00	CAP 0603 10n 50V X7R ±10%	L116	052-57421-40	COIL a/w 4T/2.1mm .57mm SMD	Q522	000-10084-71	XSTR BC847BW NPN SOT323	R205	038-14100-10	RES 0603 1k0 1% 1/10W
C612	018-12390-10	CAP 0603 39p 50V NPO ±1%	L119	036-10000-00	RES 0805 OR 1/8W	Q524	000-10084-71	XSTR BC847BW NPN SOT323	R219	038-14100-10	RES 0603 1k0 1% 1/10W
C614	018-11270-10	CAP 0603 2p7 50V NPO ±0.1pF	L122	052-57418-20	COIL a/w 2T/1.8mm .57mm SMD	Q527	000-10084-71	XSTR BC847BW NPN SOT323	R220	038-15120-10	RES 0603 12k 1% 1/10W
C616	018-14100-00	CAP 0603 1n 50V X7R ±10%	L123	059-16390-05	IND 0805CS 390nH 5%	Q529	000-10085-71	XSTR SMD BC857BW PNP SOT323	R221	038-12220-00	RES 0603 22R 5% 1/10W
C618	018-14100-00	CAP 0603 1n 50V X7R ±10%	L125	059-15470-00	IND 0603HS 47nH 5%	Q530	000-10085-71	XSTR SMD BC857BW PNP SOT323	R223	038-12470-00	RES 0603 47R 5% 1/10W
C619	018-13150-00	CAP 0603 150p 50V NPO ±5%	L126	052-57418-30	COIL a/w 3T/1.8mm .57mm SMD	Q531	000-10084-71	XSTR BC847BW NPN SOT323	R224	038-12470-00	RES 0603 47R 5% 1/10W
C640	018-15100-00	CAP 0603 10n 50V X7R ±10%	L130	052-57323-30	COIL a/w 3T/2.3mm .57mm SMD	Q532	000-10084-71	XSTR BC847BW NPN SOT323	R225	038-12220-00	RES 0603 22R 5% 1/10W
C7	018-15100-00	CAP 0603 10n 50V X7R ±10%	L131	052-57418-30	COIL a/w 3T/1.8mm .57mm SMD	Q533	000-10085-71	XSTR SMD BC857BW PNP SOT323	R227	038-10000-00	RES 0603 0R 5% 1/10W
C8	018-15100-00	CAP 0603 10n 50V X7R ±10%	L132	052-57320-30	COIL a/w 3T/2mm .57mm SMD	Q535	000-10085-71	XSTR SMD BC857BW PNP SOT323	R228	038-14100-10	RES 0603 1k0 1% 1/10W
C9	018-15100-00	CAP 0603 10n 50V X7R ±10%	L202	057-11220-02	IND 0603 2200R BLM11A221 EMI				R229	038-15180-00	RES 0603 18k 5% 1/10W
			L203	057-11220-02	IND 0603 2200R BLM11A221 EMI	R1	038-13470-00	RES 0603 470R 5% 1/10W	R230	038-15270-00	RES 0603 27k 5% 1/10W
			L270	050-10000-40	COIL DC/DC cnvrtr	R10	038-13150-00	RES 0603 150R 5% 1/10W	R234	038-14330-10	RES 0603 3k3 1% 1/10W
D1	008-10000-20	LED SML-020 red/grn	L301	057-00015-00	IND fxd 1206 15nH ±5%	R100	038-13150-00	RES 0603 150R 5% 1/10W	R236	038-14470-10	RES 0603 4k7 1% 1/10W
D103	001-10012-50	DIODE MA4P1250 pin	L302	059-16120-05	IND 0805CS 120nH 5%	R101	038-12390-10	RES 0603 39R2 1% 1/10W	R237	038-14220-00	RES 0603 2k2 5% 1/10W
D105	001-10065-02	DIODE BAP65-02 pin SOD523	L306	057-00015-00	IND fxd 1206 15nH ±5%	R102	038-13150-00	RES 0603 150R 5% 1/10W	R238	038-16470-00	RES 0603 470k 5% 1/10W
D106	001-10065-02	DIODE BAP65-02 pin SOD523	L307	057-00015-00	IND fxd 1206 15nH ±5%	R103	038-12470-00	RES 0603 47R 5% 1/10W	R240	038-12470-00	RES 0603 47R 5% 1/10W
D107	001-10065-02	DIODE BAP65-02 pin SOD523	L308	059-16560-10	IND 1008CS 560nH 5%	R104	038-13470-00	RES 0603 470R 5% 1/10W	R242	038-15150-10	RES 0603 15k 1% 1/10W
D205	001-10099-01	DIODE BAV99W dual SIG	L316	059-16820-10	IND 1008CS 820nH 5%	R105	038-13470-00	RES 0603 470R 5% 1/10W	R245	038-14220-00	RES 0603 2k2 5% 1/10W
D206	001-10099-01	DIODE BAV99W dual SIG	L318	059-16820-15	IND 1008CS 820nH 2%	R106	036-12270-00	RES 0805 27R 5% 1/8W	R246	038-14150-00	RES 0603 1k5 5% 1/10W
D270	001-10099-01	DIODE BAV99W dual SIG	L401	059-15220-00	IND 0603HS 22nH 5%	R110	038-11470-00	RES 0603 4R7 5% 1/10W	R270	038-12220-00	RES 0603 22R 5% 1/10W
D301	001-10043-90	DIODE BB439 Vcap SOD323	L402	059-15150-00	IND 0603CS 15nH 5%	R111	038-14470-10	RES 0603 4k7 1% 1/10W	R281	038-12220-00	RES 0603 22R 5% 1/10W
D302	001-10043-90	DIODE BB439 Vcap SOD323	L404	059-15560-00	IND 0603CS 56nH 5%	R112	038-15100-10	RES 0603 10k 1% 1/10W	R282	038-15470-10	RES 0603 47k 1% 1/10W
D303	001-10043-90	DIODE BB439 Vcap SOD323	L408	052-57420-50	COIL a/w 5T/2.0mm .57mm SMD	R113	038-13470-00	RES 0603 470R 5% 1/10W	R283	038-15270-00	RES 0603 27k 5% 1/10W
D304	001-10099-01	DIODE BAV99W dual SIG	L410	059-16330-05	IND 0805CS 330nH 5%	R114	038-13470-00	RES 0603 470R 5% 1/10W	R284	038-13100-10	RES 0603 100R 1% 1/10W
D305	001-10015-00	DIODE BAT15-099R sch	L412	059-16330-05	IND 0805CS 330nH 5%	R115	038-11680-00	RES 0603 6R8 5% 1/10W	R285	038-13330-00	RES 0603 330R 5% 1/10W
D400	001-10043-90	DIODE BB439 Vcap SOD323	L414	059-16330-05	IND 0805CS 330nH 5%	R118	038-15220-10	RES 0603 22k 1% 1/10W	R286	038-16105-10	RES 0603 105k 1% 1/10W
D402	001-10043-90	DIODE BB439 Vcap SOD323	L416	059-16330-05	IND 0805CS 330nH 5%	R119	036-11330-00	RES 0805 3R3 5% 1/8W	R3	038-14100-10	RES 0603 1k0 1% 1/10W
D404	001-10043-90	DIODE BB439 Vcap SOD323	L420	059-16330-05	IND 0805CS 330nH 5%	R12	038-15470-10	RES 0603 47k 1% 1/10W	R301	038-13470-00	RES 0603 470R 5% 1/10W
D406	001-10043-90	DIODE BB439 Vcap SOD323	L422	052-57421-40	COIL a/w 4T/2.1mm .57mm SMD	R120	038-12470-00	RES 0603 47R 5% 1/10W	R302	038-14560-00	RES 0603 5k6 5% 1/10W
D502	001-10056-01	DIODE BAW56W dual SIG SOT323	L424	059-16330-05	IND 0805CS 330nH 5%	R121	036-13470-10	RES 0805 470R 1% 1/8W	R303	038-14180-00	RES 0603 1k8 5% 1/10W
D504	001-10000-70	DIODE BAV70 dual sw SOT23	L426	059-15560-00	IND 0603CS 56nH 5%	R122	036-11330-00	RES 0805 3R3 5% 1/8W	R304	038-15100-10	RES 0603 10k 1% 1/10W
D506	001-10099-01	DIODE BAV99W dual SIG				R123	038-17100-10	RES 0603 1M 1% 1/10W	R305	038-16100-10	RES 0603 100k 1% 1/10W
D507	001-10099-01	DIODE BAV99W dual SIG	M202	539-00010-66	VCTCXO 12.8MHz ±2.0ppm -30+70°	R124	036-11330-00	RES 0805 3R3 5% 1/8W	R306	038-14470-10	RES 0603 4k7 1% 1/10W
D508	001-10056-01	DIODE BAW56W dual SIG SOT323	PA	319-01207-03	SHLD PA can earth tag T/Orca	R125	038-14330-10	RES 0603 3k3 1% 1/10W	R308	038-15100-10	RES 0603 10k 1% 1/10W
D510	001-10099-01	DIODE BAV99W dual SIG	PA-EX	319-01209-00	SHLD Ex T/Orca	R126	038-11470-00	RES 0603 4R7 5% 1/10W	R309	038-16100-10	RES 0603 100k 1% 1/10W

Ref	IPN	Description	Ref	IPN	Description	Ref	IPN	Description
R333	038-16820-00	RES 0603 820k 5% 1/10W	R514	038-16100-10	RES 0603 100k 1% 1/10W	R608	038-15100-10	RES 0603 10k 1% 1/10W
R334	038-15120-10	RES 0603 12k 1% 1/10W	R515	038-15470-10	RES 0603 47k 1% 1/10W	R610	038-14150-00	RES 0603 1k5 5% 1/10W
R335	038-15820-10	RES 0603 82k 1% 1/10W	R516	038-16150-10	RES 0603 150k 1% 1/10W	R614	038-15470-10	RES 0603 47k 1% 1/10W
R336	038-15820-10	RES 0603 82k 1% 1/10W	R517	038-15470-10	RES 0603 47k 1% 1/10W	R615	038-15470-10	RES 0603 47k 1% 1/10W
R337	038-10000-00	RES 0603 0R 5% 1/10W	R518	038-15270-00	RES 0603 27k 5% 1/10W	R616	038-15270-00	RES 0603 27k 5% 1/10W
R338	038-16150-10	RES 0603 150k 1% 1/10W	R519	038-15220-10	RES 0603 22k 1% 1/10W	R617	038-15220-10	RES 0603 22k 1% 1/10W
R339	038-17100-10	RES 0603 1M 1% 1/10W	R520	038-16180-00	RES 0603 180k 5% 1/10W	R618	038-15100-10	RES 0603 10k 1% 1/10W
R340	038-14270-00	RES 0603 2k7 5% 1/10W	R521	038-15220-10	RES 0603 22k 1% 1/10W	R620	038-13100-10	RES 0603 100R 1% 1/10W
R341	038-16220-00	RES 0603 220k 5% 1/10W	R522	038-12220-00	RES 0603 22R 5% 1/10W	R630	038-16120-10	RES 0603 120k 1% 1/10W
R342	038-16220-00	RES 0603 220k 5% 1/10W	R523	038-10000-00	RES 0603 0R 5% 1/10W	R632	038-15120-10	RES 0603 12k 1% 1/10W
R344	038-16560-00	RES 0603 560k 5% 1/10W	R524	038-16100-10	RES 0603 100k 1% 1/10W	R632A	038-17221-10	RES 0603 2M21 1% 1/10W
R345	038-12820-00	RES 0603 82R 5% 1/10W	R525	038-15470-10	RES 0603 47k 1% 1/10W	R633	038-16330-10	RES 0603 330k 1% 1/10W
R346	038-14270-00	RES 0603 2k7 5% 1/10W	R526	038-15100-10	RES 0603 10k 1% 1/10W	R634	038-14470-10	RES 0603 4k7 1% 1/10W
R347	038-13820-00	RES 0603 820R 5% 1/10W	R527	038-15470-10	RES 0603 47k 1% 1/10W	R635	038-15470-10	RES 0603 47k 1% 1/10W
R348	038-15150-10	RES 0603 15k 1% 1/10W	R528	038-18100-00	RES 0603 10M 5% 1/10W	R636	038-15220-10	RES 0603 22k 1% 1/10W
R349	045-15100-10	RES NTC SMD 10k 5% AgNiSn Term	R529	038-15470-10	RES 0603 47k 1% 1/10W	R639	038-15470-10	RES 0603 47k 1% 1/10W
R350	038-15150-10	RES 0603 15k 1% 1/10W	R530	038-14100-10	RES 0603 1k0 1% 1/10W	R640	038-16100-10	RES 0603 100k 1% 1/10W
R351	038-16100-10	RES 0603 100k 1% 1/10W	R530A	038-15100-10	RES 0603 10k 1% 1/10W	R641	038-15270-00	RES 0603 27k 5% 1/10W
R352	038-10000-00	RES 0603 0R 5% 1/10W	R531	038-16100-10	RES 0603 100k 1% 1/10W	R642	038-15470-10	RES 0603 47k 1% 1/10W
R353	038-15100-10	RES 0603 10k 1% 1/10W	R532	038-17100-10	RES 0603 1M 1% 1/10W	R643	038-15470-10	RES 0603 47k 1% 1/10W
R354	038-15150-10	RES 0603 15k 1% 1/10W	R533	038-16105-10	RES 0603 105k 1% 1/10W	R644	038-15220-10	RES 0603 22k 1% 1/10W
R355	038-15274-10	RES 0603 27k4 1% 1/10W	R534	038-16100-10	RES 0603 100k 1% 1/10W	R646	038-15100-10	RES 0603 10k 1% 1/10W
R356	038-14470-10	RES 0603 4k7 1% 1/10W	R535	038-15100-20	RES 0603 10k 0.5% 1/10W	R647	038-16100-10	RES 0603 100k 1% 1/10W
R358	038-14220-00	RES 0603 2k2 5% 1/10W	R536	038-15470-10	RES 0603 47k 1% 1/10W	R648	038-15470-10	RES 0603 47k 1% 1/10W
R365	038-13100-10	RES 0603 100R 1% 1/10W	R537	038-15270-20	RES 0603 27k 0.5% 1/10W	R654	038-16100-10	RES 0603 100k 1% 1/10W
R370	038-16680-10	RES 0603 680k 1% 1/10W	R538	038-16100-10	RES 0603 100k 1% 1/10W	R655	038-15470-10	RES 0603 47k 1% 1/10W
R371	038-14100-10	RES 0603 1k0 1% 1/10W	R539	038-14220-00	RES 0603 2k2 5% 1/10W	R656	038-14220-00	RES 0603 2k2 5% 1/10W
R372	038-16150-10	RES 0603 150k 1% 1/10W	R540	038-14220-00	RES 0603 2k2 5% 1/10W	R657	038-16180-00	RES 0603 180k 5% 1/10W
R373	038-15100-10	RES 0603 10k 1% 1/10W	R541	038-15390-10	RES 0603 39k2 1% 1/10W	R658	038-15470-10	RES 0603 47k 1% 1/10W
R380	038-15100-10	RES 0603 10k 1% 1/10W	R542	038-15470-10	RES 0603 47k 1% 1/10W	R672	038-17100-10	RES 0603 1M 1% 1/10W
R381	038-15100-10	RES 0603 10k 1% 1/10W	R543	038-15220-10	RES 0603 22k 1% 1/10W	R674	038-17100-10	RES 0603 1M 1% 1/10W
R390	038-16330-10	RES 0603 330k 1% 1/10W	R544	038-15470-10	RES 0603 47k 1% 1/10W	R676	038-17100-10	RES 0603 1M 1% 1/10W
R391	038-15680-10	RES 0603 68k1 1% 1/10W	R545	038-16100-10	RES 0603 100k 1% 1/10W	R678	038-16220-00	RES 0603 220k 5% 1/10W
R392	045-15100-10	RES NTC SMD 10k 5% AgNiSn Term	R546	038-14100-10	RES 0603 1k0 1% 1/10W	R679	038-15100-10	RES 0603 10k 1% 1/10W
R393	038-16100-10	RES 0603 100k 1% 1/10W	R547	038-15470-10	RES 0603 47k 1% 1/10W	R685	038-14100-10	RES 0603 1k0 1% 1/10W
R394	038-15100-10	RES 0603 10k 1% 1/10W	R548	038-14220-00	RES 0603 2k2 5% 1/10W	R685A	038-15470-10	RES 0603 47k 1% 1/10W
R399	038-15100-10	RES 0603 10k 1% 1/10W	R549	038-10000-00	RES 0603 0R 5% 1/10W	R686	038-14100-10	RES 0603 1k0 1% 1/10W
R4	038-14100-10	RES 0603 1k0 1% 1/10W	R550	038-14270-00	RES 0603 2k7 5% 1/10W	R686A	038-15470-10	RES 0603 47k 1% 1/10W
R402	038-13220-10	RES 0603 220R 1% 1/10W	R552	038-15470-10	RES 0603 47k 1% 1/10W	R687	038-14100-10	RES 0603 1k0 1% 1/10W
R404	038-14220-00	RES 0603 2k2 5% 1/10W	R554	038-15470-10	RES 0603 47k 1% 1/10W	R688	038-17100-10	RES 0603 1M 1% 1/10W
R406	038-12330-00	RES 0603 33R 5% 1/10W	R556	038-15470-10	RES 0603 47k 1% 1/10W	R689	038-13470-00	RES 0603 470R 5% 1/10W
R408	038-13330-00	RES 0603 330R 5% 1/10W	R558	038-15470-10	RES 0603 47k 1% 1/10W	R690	038-15100-10	RES 0603 10k 1% 1/10W
R410	038-14470-10	RES 0603 4k7 1% 1/10W	R560	038-15470-10	RES 0603 47k 1% 1/10W	R691	038-14100-10	RES 0603 1k0 1% 1/10W
R412	038-12220-00	RES 0603 22R 5% 1/10W	R561	038-15470-10	RES 0603 47k 1% 1/10W	R692	038-15470-10	RES 0603 47k 1% 1/10W
R416	038-12220-00	RES 0603 22R 5% 1/10W	R562	038-15470-10	RES 0603 47k 1% 1/10W	R693	038-15470-10	RES 0603 47k 1% 1/10W
R418	038-12220-00	RES 0603 22R 5% 1/10W	R564	038-15470-10	RES 0603 47k 1% 1/10W	R694	038-15470-10	RES 0603 47k 1% 1/10W
R420	038-12220-00	RES 0603 22R 5% 1/10W	R565A	038-10000-00	RES 0603 0R 5% 1/10W	R695	038-15470-10	RES 0603 47k 1% 1/10W
R422	038-13470-00	RES 0603 470R 5% 1/10W	R565B	038-10000-00	RES 0603 0R 5% 1/10W	R7	038-12100-10	RES 0603 10R 1% 1/10W
R424	038-13470-00	RES 0603 470R 5% 1/10W	R565D	038-10000-00	RES 0603 0R 5% 1/10W	R8	038-13330-00	RES 0603 330R 5% 1/10W
R426	038-12220-00	RES 0603 22R 5% 1/10W	R566	038-14470-10	RES 0603 4k7 1% 1/10W	R9	038-13470-00	RES 0603 470R 5% 1/10W
R428	038-12220-00	RES 0603 22R 5% 1/10W	R568	038-14470-10	RES 0603 4k7 1% 1/10W	RX	319-01213-01	SHLD Rx T/Orca
R430	038-13330-00	RES 0603 330R 5% 1/10W	R570	038-15100-10	RES 0603 10k 1% 1/10W	RXDEM	319-01211-00	SHLD dmodn T/Orca
R434	038-12470-00	RES 0603 47R 5% 1/10W	R571	038-16680-10	RES 0603 680k 1% 1/10W	RX-FE	319-01215-01	SHLD frt end T/Orca
R436	038-14220-00	RES 0603 2k2 5% 1/10W	R572	038-10000-00	RES 0603 0R 5% 1/10W	RX-IF	319-01208-02	SHLD Synth IF T/Orca
R438	038-14470-10	RES 0603 4k7 1% 1/10W	R573	038-14100-10	RES 0603 1k0 1% 1/10W			
R440	038-12220-00	RES 0603 22R 5% 1/10W	R574	038-17560-00	RES 0603 5M6 5% 1/10W	-SPKR	356-01070-00	PIN spr cntct TOP spkr taped
R442	038-12220-00	RES 0603 22R 5% 1/10W	R575	038-11220-00	RES 0603 2R2 5% 1/10W	SWITCH	240-10100-01	CONN sw Micro coax SMD
R444	038-14470-10	RES 0603 4k7 1% 1/10W	R576	038-15100-20	RES 0603 10k 0.5% 1/10W	SYNTH	319-01208-02	SHLD Synth IF T/Orca
R446	038-15220-10	RES 0603 22k 1% 1/10W	R577	038-14680-10	RES 0603 6k8 1% 1/10W			
R448	038-14470-10	RES 0603 4k7 1% 1/10W	R578	038-15100-20	RES 0603 10k 0.5% 1/10W	VCOBOT	319-01206-01	SHLD btm side VCO T/Orca
R450	038-13220-10	RES 0603 220R 1% 1/10W	R579	038-14820-00	RES 0603 8k2 5% 1/10W	Vcotop	319-01205-00	SHLD top side VCO T/Orca
R5	038-14220-00	RES 0603 2k2 5% 1/10W	R580	038-14100-10	RES 0603 1k0 1% 1/10W			
R501	038-14470-10	RES 0603 4k7 1% 1/10W	R581	038-14470-10	RES 0603 4k7 1% 1/10W	XF301	276-10000-18	FLTR xtal 45.1MHz 12kHz bw
R502	038-16100-10	RES 0603 100k 1% 1/10W	R582	038-15180-00	RES 0603 18k 5% 1/10W	XF302	276-10000-13	FLTR xtal 45.1MHz 15kHz bw
R503	038-15470-10	RES 0603 47k 1% 1/10W	R583	038-14680-10	RES 0603 6k8 1% 1/10W	XF303	276-10000-08	FLTR cer 455kHz 15kHz bw SMD
R504	038-15470-10	RES 0603 47k 1% 1/10W	R585	038-16100-10	RES 0603 100k 1% 1/10W	XF304	276-10000-05	FLTR cer 455kHz 10kHz bw SMD
R505	038-15470-10	RES 0603 47k 1% 1/10W	R586	038-15680-10	RES 0603 68k1 1% 1/10W	XL301	274-10016-00	XTAL 44.645MHz SMX-1S TE22
R506	038-15470-10	RES 0603 47k 1% 1/10W	R587	038-17100-10	RES 0603 1M 1% 1/10W	XL501	274-10011-00	XTAL 16.128MHz ±20ppm TQY-1002
R507	038-15470-10	RES 0603 47k 1% 1/10W	R588	038-15560-10	RES 0603 56k 1% 1/10W			
R508	038-14470-10	RES 0603 4k7 1% 1/10W	R590	038-13470-00	RES 0603 470R 5% 1/10W			
R510	038-15100-10	RES 0603 10k 1% 1/10W	R591	038-15560-10	RES 0603 56k 1% 1/10W			
R511A	038-15270-20	RES 0603 27k 0.5% 1/10W	R6	038-12100-10	RES 0603 10R 1% 1/10W			
R511B	045-15100-10	RES NTC SMD 10k 5% AgNiSn Term	R601	038-15270-00	RES 0603 27k 5% 1/10W			
R511C	038-15100-10	RES 0603 10k 1% 1/10W	R602	038-15100-10	RES 0603 10k 1% 1/10W			
R511D	038-14470-10	RES 0603 4k7 1% 1/10W	R603	038-17100-10	RES 0603 1M 1% 1/10W			
R512	038-15100-10	RES 0603 10k 1% 1/10W	R604	038-16100-10	RES 0603 100k 1% 1/10W			
R513	038-15100-10	RES 0603 10k 1% 1/10W	R606	038-15470-10	RES 0603 47k 1% 1/10W			

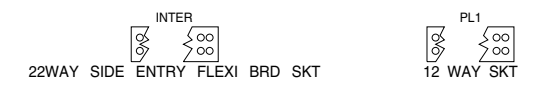
Ref	PCB	Circuit	Ref	PCB	Circuit	Ref	PCB	Circuit	Ref	PCB	Circuit	Ref	PCB	Circuit	Ref	PCB	Circuit	Ref	PCB	Circuit	Ref	PCB	Circuit
AUDIO	1:A6	4-P0	C200	1:E5	5-B6	C355	2:K4	3-F3	C553	1:A5	4-M0	IC101	1:J3	2-D7	L302	2:J5	3-G7	Q516	2:C4	4-R1	R162	1:G4	2-M4
BATTERY-	1:H3	1-B0	C202	2:D6	5-C7	C356	2:K6	3-F3	C559	1:C5	4-L1	IC101	1:J3	2-K7	L304	2:J5	3-G6	Q517	2:C4	4-R2	R163	1:G4	2-M3
BATTERY+	1:H4	1-B1	C208	1:D5	5-D8	C357	2:K6	3-F3	C560	2:A6	4-M1	IC104	1:H6	2-N7	L306	2:J6	3-H6	Q518	2:C5	4-S0	R167	1:H6	2-M7
BL301	2:G6	3-J6	C209	1:D5	5-E8	C358	2:K6	3-F3	C561	1:C6	4-N1	IC201	1:D5	5-E6	L307	2:H6	3-I6	Q519	2:C4	4-S1	R169	2:F3	2-P4
BL302	2:G6	3-L6	C210	1:E6	5-F8	C359	2:K4	3-J3	C566	2:C6	4-N1	IC202	1:G6	5-C3	L308	1:J6	3-O6	Q522	1:J2	4-P7	R170	2:F3	2-N4
C1	1:L3	1-B4	C211	1:D6	5-E8	C360	2:K4	3-K2	C567	1:C5	4-N2	IC203	1:E5	5-A6	L309	1:J6	3-O6	Q524	1:H2	4-P7	R171	2:H4	2-L0
C2	1:K2	1-B1	C212	1:D5	5-D7	C362	2:K6	3-N3	C568	2:C6	4-N2	IC203	1:E5	5-J5	L310	1:K6	3-P6	Q527	2:A5	4-N0	R172	2:H3	2-L0
C3	1:K2	1-B2	C213	1:G6	5-F8	C363	2:K6	3-M3	C569	1:C5	4-O1	IC203	1:E5	5-G6	L316	1:K5	3-T6	Q529	2:A5	4-M0	R173	2:H3	2-M0
C4	1:K2	1-B1	C214	1:D5	5-F7	C364	2:K4	3-M2	C571	2:A6	4-O0	IC301	2:K5	3-F3	L318	1:K5	3-C2	Q530	1:A6	4-L0	R174	1:H6	2-P8
C5	1:K3	1-B2	C215	1:D5	5-G7	C365	2:K4	3-K3	C572	2:C5	4-P1	IC301	2:K5	3-K2	L401	2:E6	6-B2	Q531	2:F4	4-J5	R202	1:E5	5-A6
C6	1:K2	1-C1	C216	1:D4	5-G7	C366	2:K6	3-O3	C573	1:G1	4-S1	IC301	2:K5	3-C3	L402	2:E6	6-C2	Q532	2:A5	4-N0	R203	1:E5	5-A6
C7	1:K2	1-C2	C217	1:D6	5-G5	C367	2:L4	3-P3	C574	2:C5	4-P0	IC302	1:L5	3-Q3	L404	2:E6	6-C4	Q533	2:E4	4-I5	R204	1:E5	5-B7
C8	1:K3	1-C1	C218	1:E6	5-H5	C368	2:L4	3-P3	C576	2:C5	4-P1	IC302	1:L5	3-Q2	L408	2:F6	6-D5	Q535	2:F4	4-K6	R205	1:E4	5-B7
C9	1:K3	1-C1	C219	1:D6	5-H6	C369	2:L6	3-R3	C578	2:C5	4-Q1	IC302	1:L5	3-Q2	L410	1:F6	6-D6	R219	1:D6	5-F6	R219	1:D6	5-F6
C10	1:J3	1-D1	C220	1:E6	5-H6	C370	2:L4	3-P3	C579	1:C5	4-N0	IC302	1:L5	3-T4	L412	2:F6	6-E5	R220	1:E5	5-F6	R220	1:E5	5-F6
C11	1:K1	1-D1	C222	1:E6	5-H5	C372	2:L6	3-R3	C581	1:G1	4-R0	IC302	1:L5	3-O3	L414	2:F6	6-F5	R221	1:D5	5-D9	R221	1:D5	5-D9
C15	1:H4	1-B0	C223	1:E6	5-J6	C375	2:L6	3-S3	C582	1:A4	4-R1	IC303	2:K3	3-H3	L416	2:F4	6-F5	R223	1:D5	5-E8	R223	1:D5	5-E8
C16	1:H3	1-C0	C226	1:E5	5-K5	C376	2:L5	3-S3	C583	2:C4	4-S2	IC303	2:K3	3-G3	L420	2:F4	6-G5	R224	1:J2	1-C2	R224	1:J2	1-C2
C100	1:G5	2-B2	C229	1:G6	5-B3	C378	2:L4	3-T4	C588	2:C4	4-S0	IC303	2:K3	3-J3	L422	2:F5	6-H5	R225	1:D6	5-F8	R225	1:D6	5-F8
C101	1:G5	2-C3	C240	1:G6	5-B3	C379	1:L5	3-S2	C590	2:C6	4-T0	IC400	2:E6	6-E3	L424	1:F6	6-H6	R227	1:E5	5-F5	R227	1:E5	5-F5
C102	1:H5	2-D2	C241	1:G6	5-C3	C384	2:K6	3-O1	C593	1:J2	4-P8	IC402	2:E5	6-H3	L426	2:E5	6-J4	R228	1:J3	1-D2	R228	1:J3	1-D2
C103	1:H5	2-E3	C242	1:H6	5-C3	C385	2:L6	3-R2	C594	1:H2	4-P8	IC501	2:D2	4-A9	LK1	2:L6	1-Q5	R229	1:K2	1-C3	R229	1:K2	1-C3
C104	1:H5	2-F3	C243	1:G6	5-B1	C400	2:E6	6-B2	C595	1:H2	4-P7	IC502	1:F2	4-D7	LK2	2:L6	1-Q5	R230	2:L3	1-R9	R230	2:L3	1-R9
C105	1:H5	2-F2	C246	1:E6	5-F3	C401	2:E6	6-A2	C596	1:K1	4-Q8	IC503-FB	1:C2	4-A0	LK3	2:L6	1-Q7	R234	2:L3	1-R8	R234	2:L3	1-R8
C106	1:H5	2-F3	C247	1:D6	5-G3	C402	2:E6	6-C3	C597	1:H2	4-Q7	IC503-FA	1:E4	4-A0	LK4	2:L6	1-Q7	R236	2:J6	1-N5	R236	2:J6	1-N5
C110	1:H5	2-F2	C270	2:A3	7-C4	C403	2:E6	6-B3	C608	2:C6	4-P6	IC503	1:D3	4-A4	LP405	2:F6	6-E5	R237	1:K6	1-P5	R237	1:K6	1-P5
C111	2:H5	2-G2	C271	1:A4	7-D4	C404	2:E6	6-C2	C610	2:B6	4-R7	IC503	1:D3	4-D3	LP406	2:F6	6-E5	R238	1:L6	1-N5	R238	1:L6	1-N5
C112	2:H4	2-G3	C272	2:A3	7-E4	C406	2:E6	6-C4	C612	2:B6	4-R6	IC504-FB	1:C1	4-A0	LP418	2:E5	6-G5	R240	1:L6	1-P5	R240	1:L6	1-P5
C113	2:G5	2-H3	C273	2:A3	7-E5	C408	2:E6	6-C4	C614	2:B6	4-S6	IC504-FA	1:D3	4-A1	LP419	2:F5	6-H5	R241	1:K6	1-P5	R241	1:K6	1-P5
C114	1:J4	2-H8	C274	1:A2	7-D5	C410	2:E6	6-E4	C616	2:C6	4-S6	IC504	1:C3	4-D1				R242	2:L6	1-R6	R242	2:L6	1-R6
C115	1:J4	2-H7	C275	2:A2	7-F5	C412	2:F6	6-D4	C618	2:C6	4-S6	IC506	2:B1	4-K7	M202	2:D6	5-C6	R245	1:C6	1-M0	R245	1:C6	1-M0
C116	2:G5	2-H3	C276	2:A2	7-G5	C413	1:F6	6-C5	C619	1:A6	4-W7	IC507	1:B6	4-Q3	MIC	2:A4	1-H9	R246	1:G5	2-A2	R246	1:G5	2-A2
C117	2:H5	2-G2	C278	2:A2	7-G4	C416	1:F6	6-D6	C640	2:E4	4-U2	IC507	1:B6	4-L2	MIC-SEAL	2:A4	7-F0	R270	1:G5	2-A2	R270	1:G5	2-A2
C120	2:G5	2-H2	C279	1:A4	7-H4	C417	1:F6	6-D6				IC507	1:B6	4-H2				R281	1:G5	2-B2	R281	1:G5	2-B2
C121	2:F5	2-H4	C280	1:A2	7-J4	C418	1:F6	6-D6	D1	2:L3	1-R9	IC508	2:A6	4-J3	ONLY	2:F3	4-A8	R282	1:G5	2-D3	R282	1:G5	2-D3
C122	2:G5	2-J3	C300	2:J4	3-B7	C419	2:F6	6-E6	D100	2:J3	2-N0	IC509	1:B2	4-I0				R283	1:H5	2-E2	R283	1:H5	2-E2
C123	2:G4	2-J2	C301	2:J4	3-C6	C422	1:F5	6-F5	D103	2:J2	2-N3	IC510	1:B5	4-J0	PA	2:F3	2-G1	R284	1:H5	2-E3	R284	1:H5	2-E3
C124	2:G4	2-J2	C302	2:J4	3-C6	C423	1:F6	6-F5	D105	2:J2	2-N3	IC511	1:C6	4-Q6	PA-EX	1:F6	2-A1	R285	1:H5	2-E2	R285	1:H5	2-E2
C125	1:H4	2-J8	C303	2:J4	3-C6	C424	2:E5	6-F3	D106	2:J3	2-L0	IC511	1:C6	4-N1	PA-LPF	2:K1	2-Q1	R286	1:H5	2-F3	R286	1:H5	2-F3
C126	1:H3	2-J5	C304	2:J4	3-C6	C426	2:E4	6-G3	D107	2:J3	2-L0	IC511	1:C6	4-R6	PL1	1:K2	1-N0	R301	1:G4	2-G4	R301	1:G4	2-G4
C130	2:H4	2-J5	C305	2:J4	3-D6	C430	2:E5	6-G4	D205	1:E5	5-H8	IC511	1:C6	4-O6	PTT	2:H1	1-K8	R302	1:G4	2-G4	R302	1:G4	2-G4
C131	2:F4	2-J3	C306	2:J4	3-D6	C431	2:F5	6-G6	D205	1:E5	5-H8	IC511	1:C6	4-T0				R303	1:G4	2-G5	R303	1:G4	2-G5
C132	2:G3	2-K3	C309	2:J4	3-C7	C432	2:F5	6-H4	D206	1:D6	5-G3	IC512	1:J2	4-Q7	Q1	2:L2	1-Q9	R304	1:G4	2-G4	R304	1:G4	2-G4
C133	2:G2	2-L3	C310	2:J5	3-G7	C436	1:F5	6-H6	D206	1:D6	5-G3	IC513	1:C5	4-O0	Q2	2:L2	1-Q8	R305	2:H4	2-G2	R305	2:H4	2-G2
C135	2:G1	2-L2	C311	1:H5	3-G7	C437	1:F6	6-H6	D206	1:D6	5-G3	IC513	1:C5	4-M2	Q3	1:K6	1-N4	R306	1:H4	2-G7	R306	1:H4	2-G7
C136	2:H2	2-L4	C312	2:H5	3-G7	C439	1:F5	6-J5	D270	2:A2	7-G4	IC513	1:C5	4-Q1	Q4	1:L6	1-P5	R308	2:G4	2-G5	R308	2:G4	2-G5
C137	2:G2	2-K3	C315	2:J5	3-G6	C440	1:F6	6-H6	D270	2:A2	7-G5	IC513	1:C5	4-R0	Q5	1:K6	1-P5	R309	2:H4	2-G3	R309	2:H4	2-G3
C138	2:G2	2-K2	C316	2:J6	3-G6	C442	2:E5	6-J4	D301	2:J4	3-C6	IC514	1:J1	4-R8	Q100	1:H5	2-E2	R310	2:H5	2-H2	R310	2:H5	2-H2
C140	2:H3	2-L5	C317	2:J6	3-H6	C446	2:E4	6-J1	D302	2:J6	3-H6	IC514	1:J1	4-R7	Q101	1:G4	2-G5	R312	2:F4	2-H5	R312	2:F4	2-H5
C141	2:G2	2-L2	C318	2:J6	3-H6	C502	1:F4	4-D9	D303	2:H6	3-I6	IC515	1:G1	4-S0	Q102	1:H4	2-G4	R315	1:J4	2-H6	R315	1:J4	2-H6
C142	2:J3	2-M0	C319	2:J6	3-I6	C504	1:F4	4-E9	D304	2:J4	3-C7	INTER	2:B4	1-L0	Q103	2:G5	2-H2	R316	2:F4	2-H5	R316	2:F4	2-H5
C143	2:J3	2-N0	C320	2:J6	3-H6	C505	1:D4	4-A5	D304	2:J4	3-C7				Q104	1:H4	2-J8	R317	1:J4	2-H8	R317	1:J4	2-H8
C144	2:H2	2-L2	C325	2:J6	3-I7	C506	2:D3	4-B5	D305	2:G6	3-K6	L101	1:G5	2-D2	Q105	1:J4	2-J8	R318	2:G5	2-H3	R318	2:G5	2-H3
C145	2:H2	2-M2	C326	2:H6	3-J6	C506A	2:E3	4-A5	D400	2:F6	6-E5	L102	1:G5	2-D3	Q106	2:G3	2-K2	R319	1:H4	2-J8	R319	1:H4	2-J8
C146	1:H6	2-M7	C326A	2:H6	3-J6	C512	2:D3	4-C3	D402	2:E6	6-E5	L103	1:H5	2-E4	Q110	1:H3	2-L6	R320	1:J4	2-J8	R320	1:J4	2-J8
C147	1:G4	2-M3	C327	2:H6	3-I6	C514	2:D3	4-C3	D404	2:F5	6-G5	L104	1:H5	2-E4	Q111	1:G4	2-L4	R321	1:J4	2-J7	R321	1:J4	2-J7
C150	2:J2	2-M3	C328	2:H6	3-I6	C515	2:E3	4-C3	D406	2:E5	6-G5	L105	1:H5	2-E3	Q205	1:D6	5-G3	R323	1:H4	2-J8	R323	1:H4	2-J8
C151	2:H2	2-M3	C329	2:H6	3-J6	C516	2:E3	4-D3	D502	2:E2	4-G5	L110	2:H5	2-G2	Q280	1:A3	7-D5	R324	1:H3	2-J6	R324	1:H3	2-J6
C152	1:H6	2-N7	C331	2:F6	3-L6	C518	1:D1	4-E2	D502	2:E2	4-G6	L111	2:G5	2-H4	Q281	2:A2	7-F5	R325	1:H4	2-J8	R325	1:H4	2-J8
C153	2:J2	2-N0	C332	1:J6	3-O6	C520	1:G2	4-T0	D504	2:B1	4-J7	L112	2:G5	2-H3	Q301	2:J5	3-G6	R326	1:H3	2-J6	R326	1:H3	2-J6
C154	1:H6	2-N7	C333	1:																			

Ref	PCB	Circuit	Ref	PCB	Circuit	Ref	PCB	Circuit	Ref	PCB	Circuit
R346	2:L6	3-R3	R527	2:F2	4-H9	R633	2:A5	4-M0	XF303	1:K4	3-D3
R347	2:L6	3-R3	R528	2:E3	4-C3	R634	2:A6	4-N0	XF304	1:K4	3-I3
R348	2:L6	3-S3	R529	2:F1	4-H9	R635	2:A5	4-L0	XL301	1:J5	3-C2
R349	2:K3	3-T2	R530	2:E3	4-D3	R636	1:A6	4-K0	XL501	2:D4	4-C3
R350	2:L4	3-T2	R530A	2:E3	4-D3	R639	1:H1	4-O7			
R351	2:L4	3-T2	R531	2:B5	4-P3	R640	1:J1	4-P7			
R352	1:L5	3-T2	R532	2:A5	4-K3	R641	1:H2	4-P7			
R353	2:L5	3-P2	R533	2:C6	4-L4	R642	1:J2	4-O7			
R354	2:L5	3-Q2	R534	2:A5	4-K3	R643	1:J1	4-P8			
R355	2:L4	3-S4	R535	2:C6	4-L4	R644	1:J2	4-P8			
R356	2:L6	3-T4	R536	2:C6	4-L3	R646	1:K1	4-Q8			
R358	2:L4	3-P2	R537	2:C6	4-L3	R647	1:K1	4-Q8			
R365	2:L6	3-Q3	R538	2:C2	4-I7	R648	1:K1	4-Q8			
R370	2:L5	3-Q3	R539	1:H2	4-T0	R649	2:B6	4-P6			
R371	2:L5	3-Q3	R540	1:H2	4-T0	R650	2:C6	4-R6			
R372	2:K6	3-O3	R541	1:G1	4-S1	R653	1:C6	4-O6			
R373	2:L5	3-Q3	R542	1:G1	4-S0	R654	2:C6	4-P6			
R380	2:L5	3-O3	R543	1:G2	4-R0	R655	2:C6	4-P6			
R381	2:L5	3-O3	R544	2:C4	4-Q2	R656	2:C6	4-P6			
R390	1:L5	3-T3	R545	2:A4	4-R5	R657	2:B6	4-Q6			
R391	2:L4	3-T3	R546	2:A6	4-M3	R658	2:C6	4-Q6			
R392	2:L5	3-T3	R547	2:C4	4-Q2	R672	2:B6	4-R6			
R393	2:L3	3-U2	R548	2:B6	4-L3	R674	2:B6	4-S6			
R394	2:K3	3-U3	R549	2:A6	4-K3	R676	2:C6	4-S6			
R399	2:L3	3-U3	R550	2:B6	4-K3	R678	2:C6	4-S6			
R402	2:E6	6-C4	R552	1:C2	4-G1	R679	1:K1	4-S6			
R404	1:F6	6-D5	R554	1:C2	4-H1	R685	1:D4	4-V3			
R406	1:F6	6-D5	R556	1:C2	4-G1	R685A	1:E4	4-U3			
R408	2:F6	6-D5	R558	1:B4	4-H1	R686	1:D4	4-V3			
R410	1:F6	6-D6	R560	1:B4	4-G1	R686A	1:E4	4-U3			
R412	1:F6	6-D6	R561	1:B4	4-H1	R687	1:D4	4-V2			
R416	1:F6	6-D7	R562	1:B4	4-G1	R688	2:E4	4-U2			
R418	2:E6	6-E5	R564	1:B4	4-H1	R689	2:E4	4-V2			
R420	2:F6	6-F5	R565	2:B6	4-J1	R690	1:C3	4-V5			
R422	2:E6	6-E3	R565A	2:F3	4-J2	R691	1:E4	4-V5			
R424	2:E4	6-G3	R565B	2:F4	4-J2	R692	2:E3	4-I5			
R426	2:F4	6-F5	R565D	1:F4	4-J1	R693	2:E3	4-J5			
R428	2:F4	6-G5	R566	1:B2	4-I2	R694	2:F3	4-J6			
R430	2:F5	6-H5	R568	1:A4	4-J2	R695	2:F3	4-K6			
R434	1:F5	6-H5	R570	2:B6	4-L1	RSW1	1:L4	1-R7			
R436	1:F5	6-H5	R571	2:A6	4-L1	RV1	1:L6	1-R6			
R438	1:F5	6-J6	R572	2:A6	4-L1	RV1	1:L6	1-R5			
R440	1:F6	6-H6	R573	1:G1	4-R1	RX	2:J5	3-C5			
R442	2:E5	6-H7	R574	2:A6	4-L1	RXDEM	2:K6	3-R1			
R444	2:E6	6-G7	R575	1:A6	4-L0	RX-FE	2:F6	3-F5			
R446	2:E6	6-G7	R576	1:C6	4-M1	RX-IF	1:K5	3-O5			
R448	2:E6	6-H7	R577	1:A6	4-M0						
R450	2:E5	6-J4	R578	1:A6	4-M0	SEAL	1:H3	7-G0			
R501	2:D1	4-B9	R579	1:C6	4-N0	SK3	1:L2	1-R0			
R502	2:B1	4-I7	R580	2:B6	4-L1	-SPKR	2:L3	1-N8			
R503	2:E2	4-G9	R581	1:C5	4-N0	+SPKR	2:L5	1-N8			
R504	1:E1	4-C9	R582	2:B6	4-L1	SWITCH	1:L2	1-Q0			
R505	2:E2	4-G9	R583	1:C6	4-N1	SYNTH	1:E5	5-A5			
R506	2:F3	4-A8	R585	1:C5	4-M2						
R507	1:E1	4-D9	R586	2:C6	4-N2	TP1	1:L6	1-P7			
R508	2:F3	4-D9	R587	1:C5	4-O1	TP2	1:L6	1-B9			
R509	2:C1	4-H7	R588	2:C6	4-N2	TP3	1:L6	1-B1			
R510	1:F4	4-E9	R589	1:C6	4-O1	TP4	1:L6	1-N8			
R511A	2:F1	4-G8	R590	1:C6	4-O2	TP5	1:L3	1-N8			
R511B	1:F4	4-I6	R591	1:C5	4-O1	TP6	1:L2	1-P7			
R511C	1:F4	4-K6	R594	1:C6	4-L0	TP7	1:A4	1-B5			
R511D	2:F1	4-G8	R601	2:A6	4-O0	TP8	1:L1	1-C3			
R512	2:B2	4-J7	R602	2:C5	4-P1	TP9	1:L3	1-D2			
R513	2:E3	4-D6	R603	1:A6	4-N0	TP10	1:C4	1-C3			
R514	2:F3	4-H7	R604	2:C5	4-P1	TP11	1:H2	1-C3			
R515	2:F2	4-G9	R606	2:C5	4-P0	TP12	1:H1	1-C3			
R516	2:F3	4-H7	R608	2:C5	4-Q1	TP13	1:H1	1-C2			
R517	2:F1	4-G9	R610	2:C5	4-Q1	TP14	1:L1	1-C7			
R518	2:B1	4-H6	R614	2:C4	4-Q2	TP15	1:H2	1-B0			
R519	2:C1	4-I7	R615	2:C4	4-S2	TP16	1:D4	1-P3			
R520	2:B1	4-J6	R616	2:C4	4-S1	TP17	1:L1	1-M8			
R521	2:C2	4-I7	R617	1:C6	4-N2						
R522	2:D1	4-H6	R618	2:C5	4-S0	VCOBOT	2:F6	6-G1			
R523	1:D1	4-C1	R620	2:C6	4-T0	Vcotop	1:E5	6-F1			
R524	2:C1	4-I7	R630	1:A6	4-K0						
R525	2:F1	4-H9	R632	1:A5	4-L0	XF301	1:J6	3-P6			
R526	2:E2	4-H6	R632A	1:A5	4-M0	XF302	1:K5	3-S6			





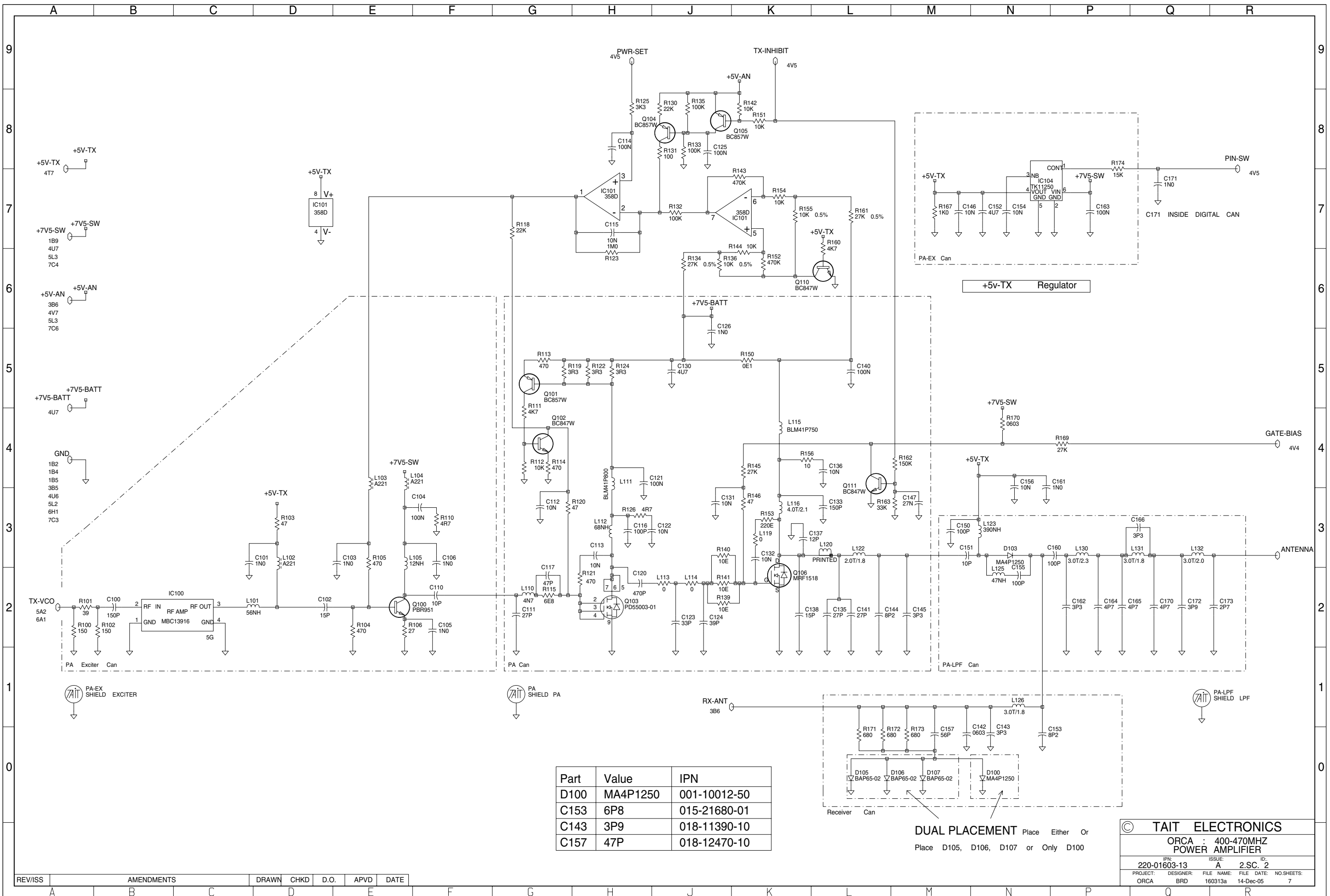
07A	CCO. NO. 1603-010	BRD		23-02-01	13A	ROHS COMPLIANCE, GOLD FINISH	BRD		14-12-05				
05B	CCO 1603/005	CM		02/02/00	12B	MORE PASTE FOR RH	BRD		08-06-05				
05A	CCO 1603-008 BCU TRACK 2 VIAS	TS		15-12-99	12A	DCO 1603-013 DASH DOT CANS	BRD		14-07-04				
04B	CCO 1603/007	TS		18-11-99	11A		MAJ		12-01-04				
04A	CCO 1603/004 1603/005 1603/006	CJK		05/11/99	10B	ECO 501828 C117,R115 VALUE CHG.	BRD		06-06-03				
03A	CCO 1603/003	CJK	SP	6/10/99	10A	ECO 50 1651 MOVED C135	BRD		09-08-02				
02A	CCO 1603/001 & 002	CJK		24/09/99	09A	DCO NO. 1603-012	BRD		19-04-02				
01A	NEW PA FOR 400-470 MHZ	CJK	JJ	10/06/99	08A	CCO. NO. 1603-011	BRD		26-01-01				
REV/ISS	AMENDMENTS	DRAWN	CHKD	D.O.	APVD	DATE	REV/ISS	AMENDMENTS	DRAWN	CHKD	D.O.	APVD	DATE



© TAIT ELECTRONICS
ORCA : 400-470MHZ
SYSTEM DIAGRAM

IPN: 220-01603-13
ISSUE: A
2.S.C. 1

PROJECT: ORCA
DESIGNER: BRD
FILE NAME: 160313a
FILE DATE: 14-Dec-05
NO.SHEETS: 7

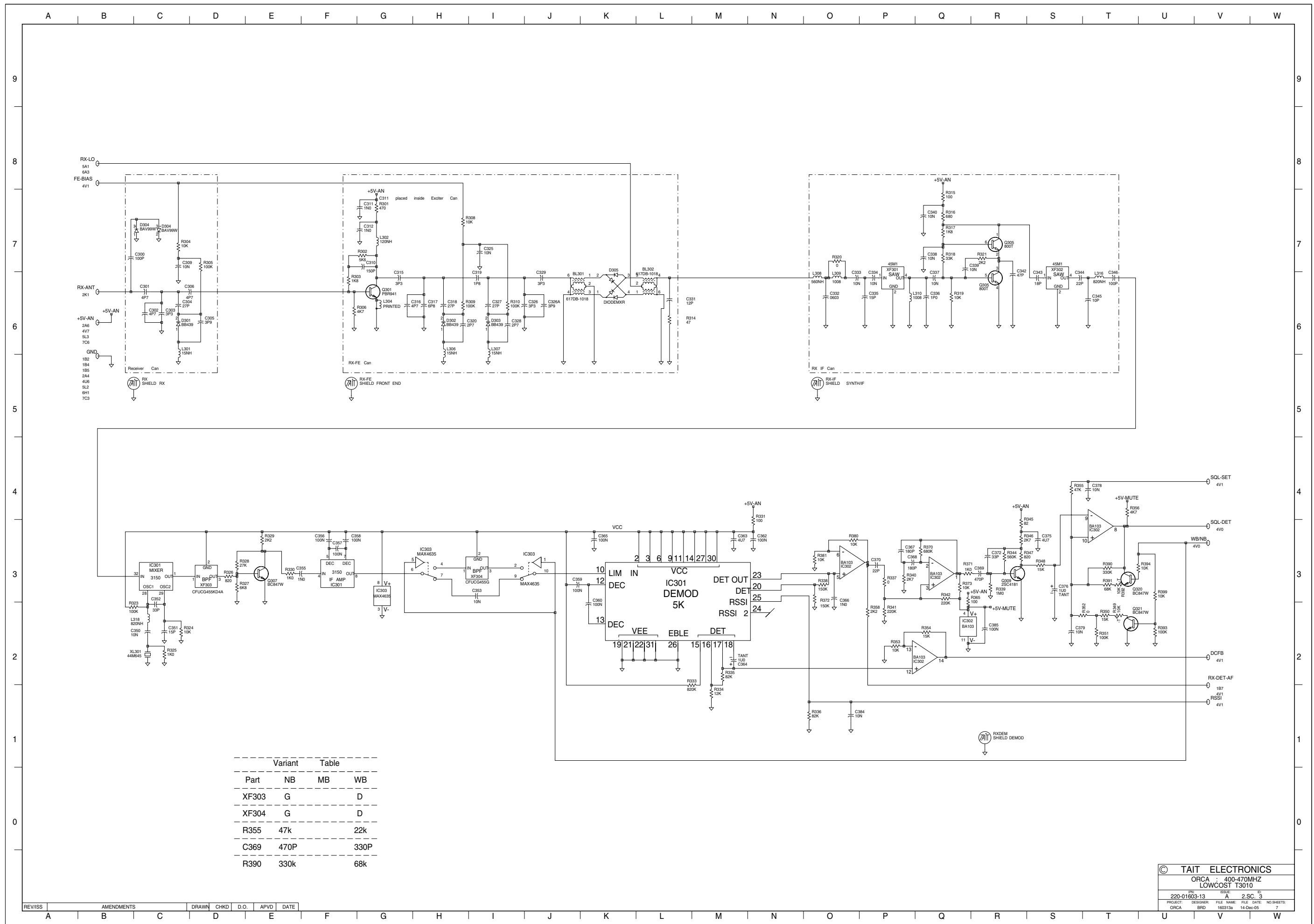


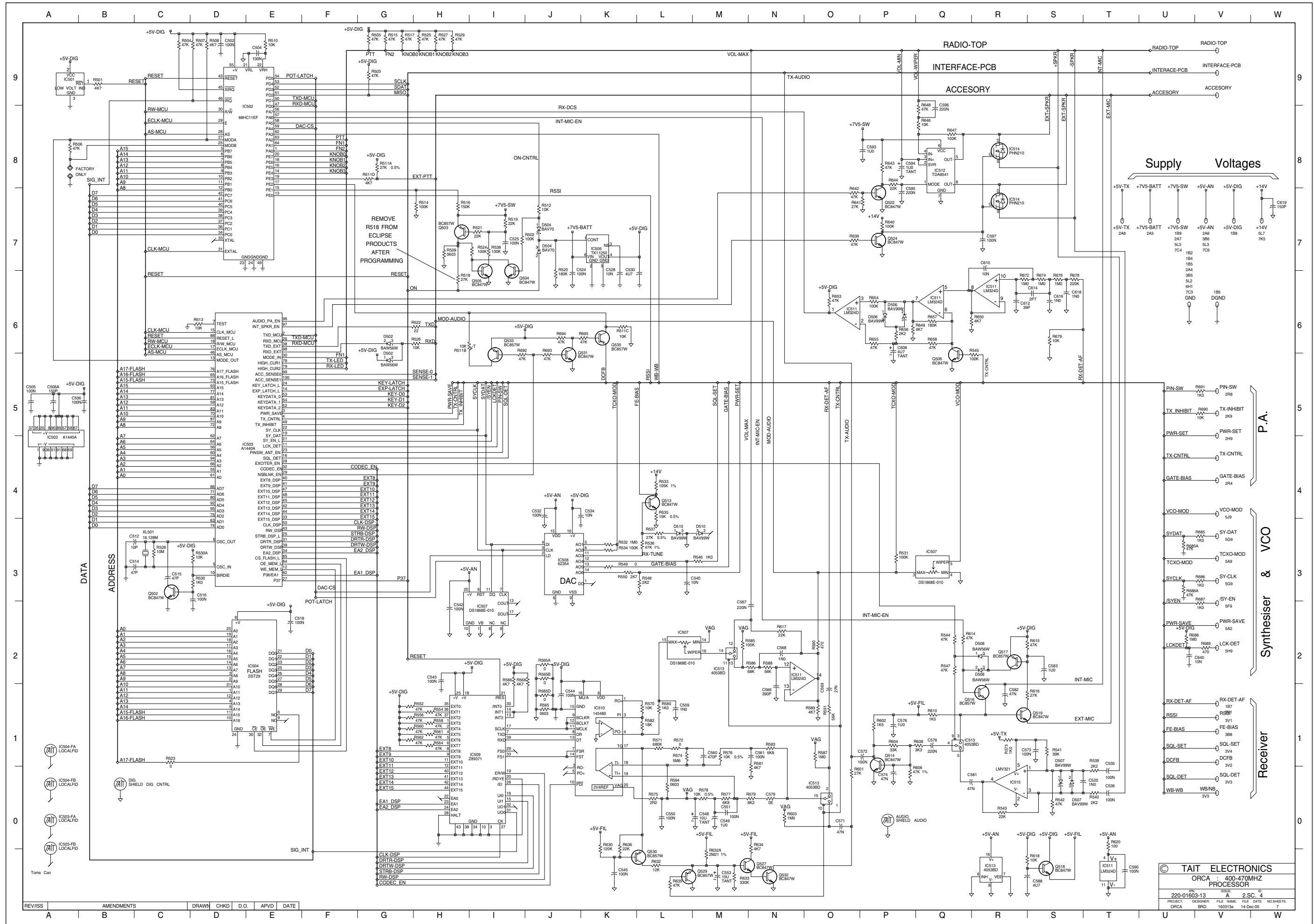
Part	Value	IPN
D100	MA4P1250	001-10012-50
C153	6P8	015-21680-01
C143	3P9	018-11390-10
C157	47P	018-12470-10

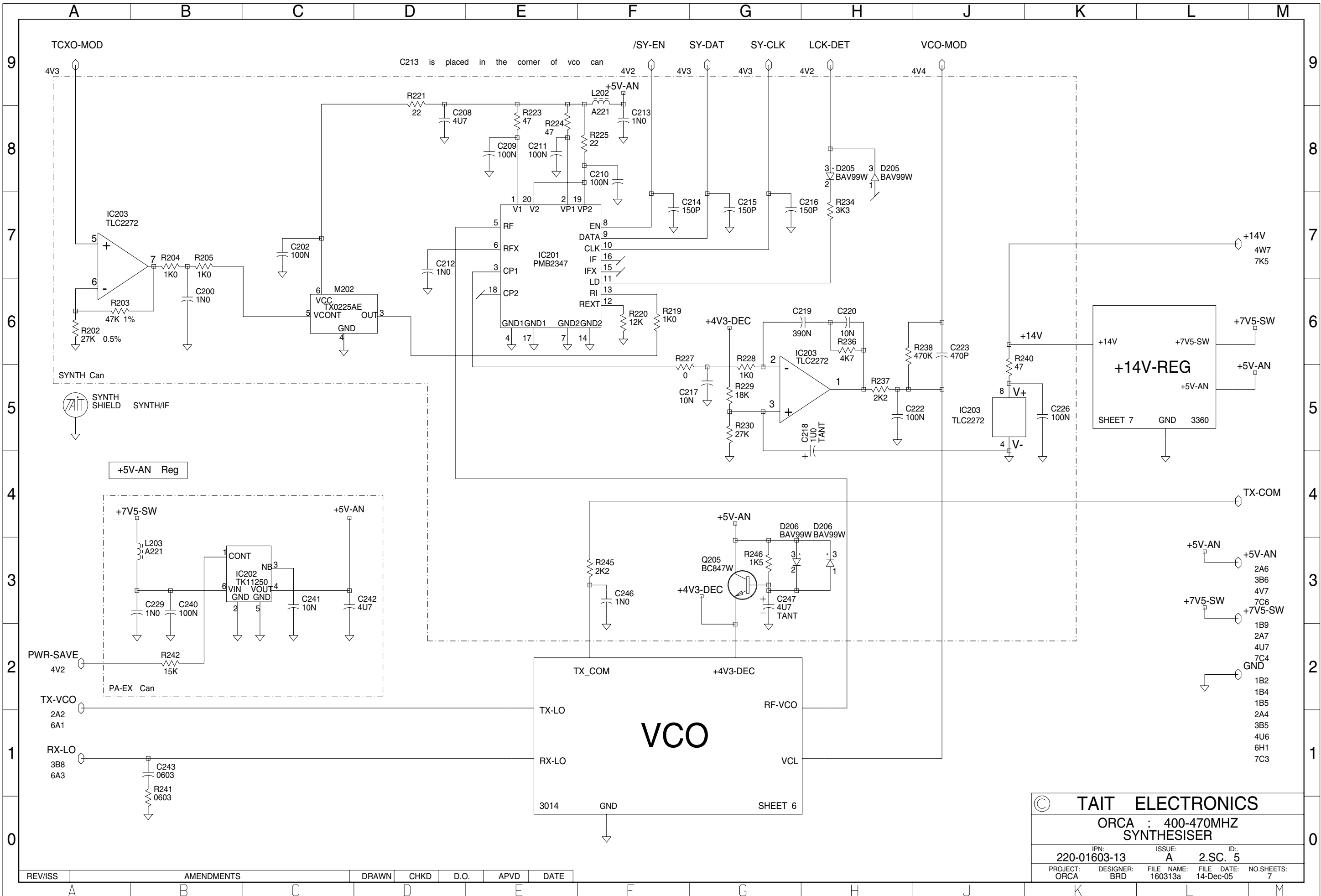
DUAL PLACEMENT Place Either Or
Place D105, D106, D107 or Only D100

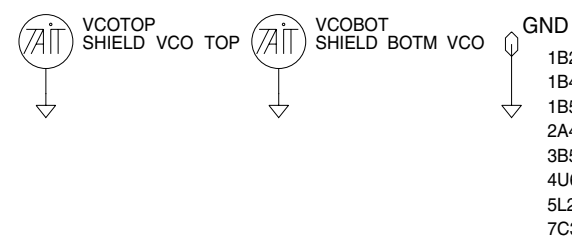
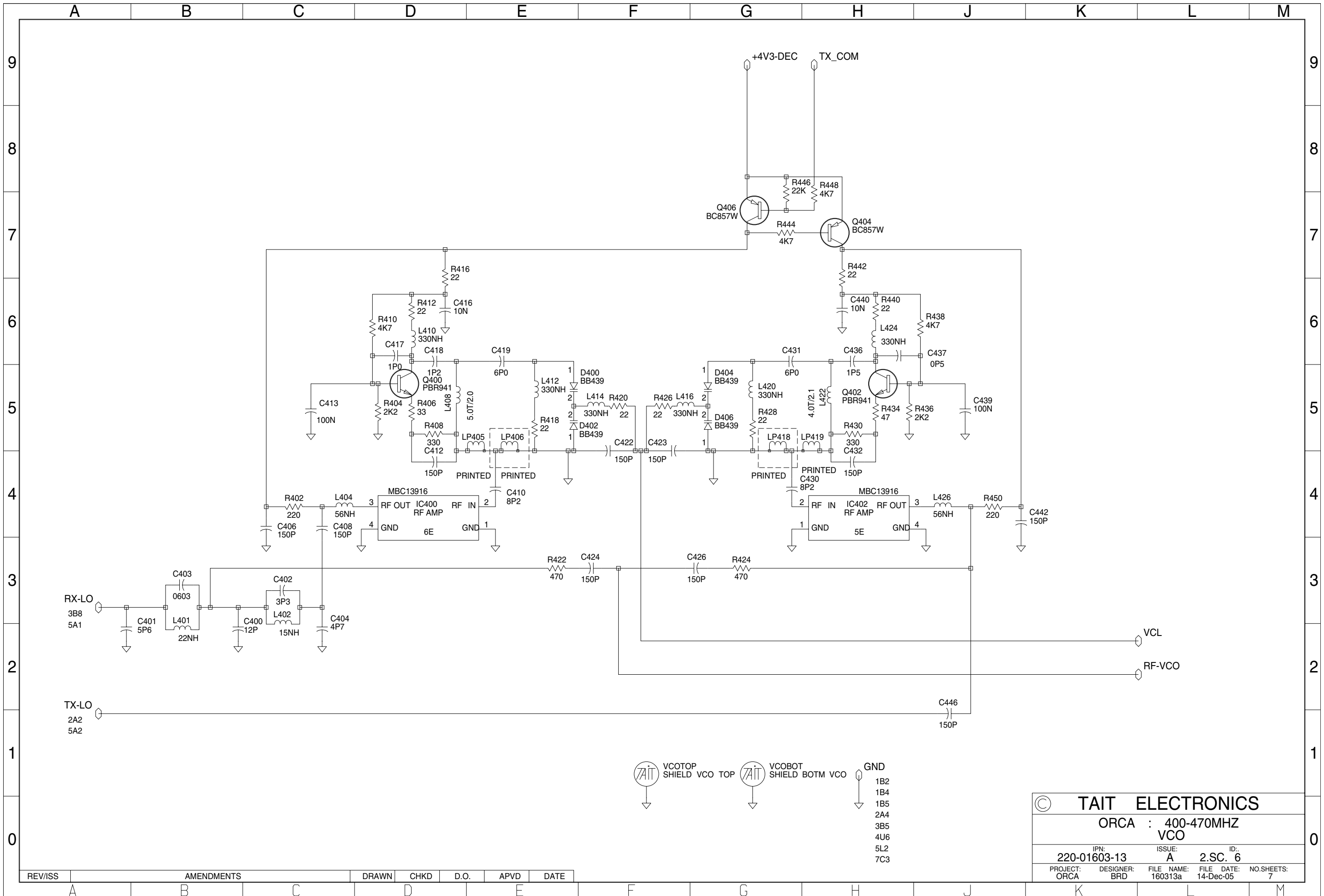
© TAIT ELECTRONICS
ORCA : 400-470MHZ
POWER AMPLIFIER
IPN: 220-01603-13 ISSUE: A ID: 2.SC. 2
PROJECT: ORCA DESIGNER: BRD FILE NAME: 160313a FILE DATE: 14-Dec-05 NO.SHEETS: 7

REV/ISS	AMENDMENTS	DRAWN	CHKD	D.O.	APVD	DATE
A						



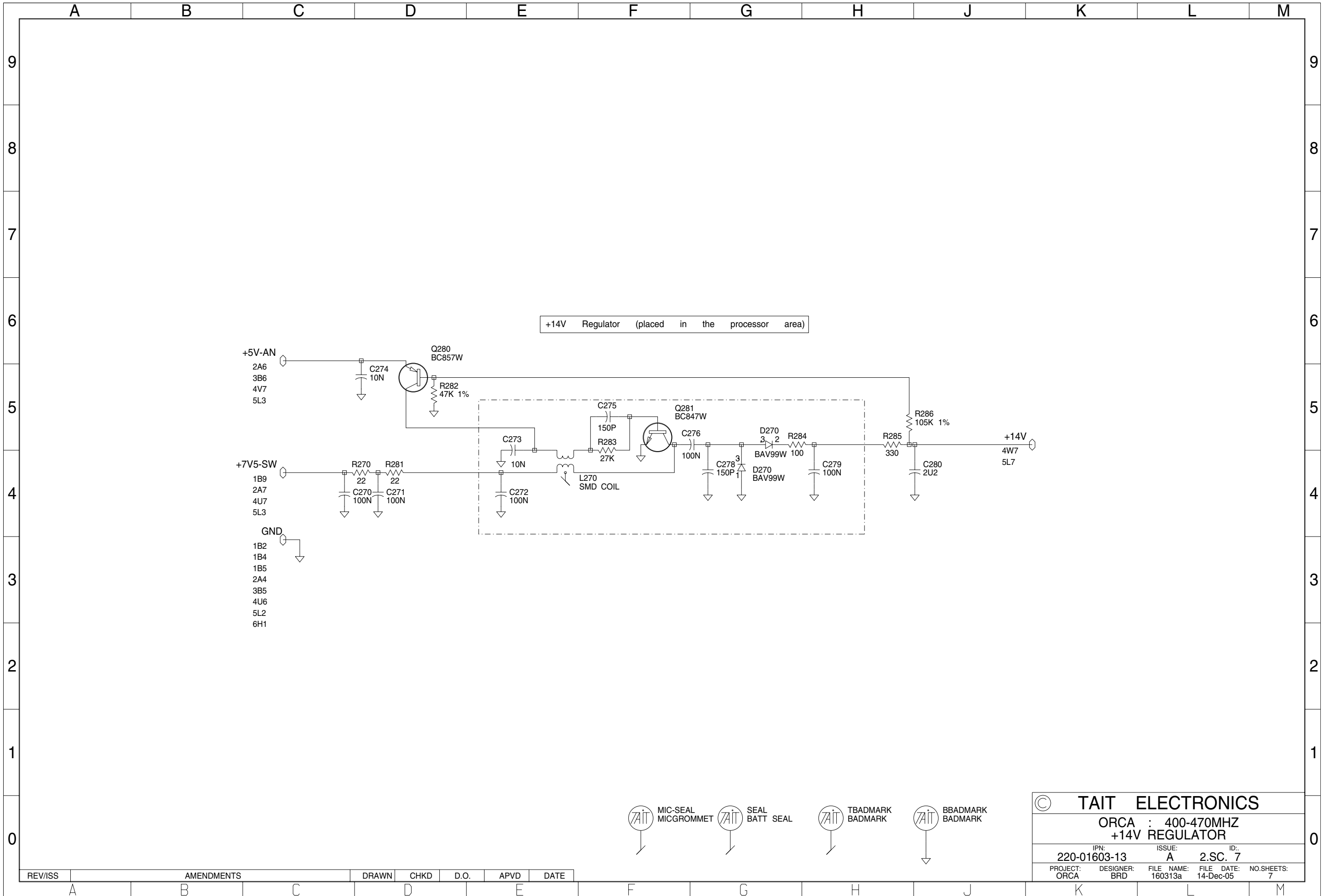






© TAIT ELECTRONICS			
ORCA : 400-470MHZ VCO			
IPN: 220-01603-13	ISSUE: A	ID.:	2.SC. 6
PROJECT: ORCA	DESIGNER: BRD	FILE NAME: 160313a	FILE DATE: 14-Dec-05
		NO.SHEETS:	7

REV/ISS	AMENDMENTS	DRAWN	CHKD	D.O.	APVD	DATE



© TAIT ELECTRONICS			
ORCA : 400-470MHZ +14V REGULATOR			
IPN: 220-01603-13	ISSUE: A	ID: 2.SC. 7	
PROJECT: ORCA	DESIGNER: BRD	FILE NAME: 160313a	FILE DATE: 14-Dec-05
		NO.SHEETS: 7	

REV/ISS	AMENDMENTS	DRAWN	CHKD	D.O.	APVD	DATE