

J1

1	RX_AUD
2	13VB
3	RD_CH_TXD
4	RD_CH_PTT
5	RD_CH_MIC_AUD
6	AGND
7	RD_CH_RXD
8	DGND
9	RD_CH_ON_OFF
10	RD_VOL_WIP_DC
11	RD_CH_SPI_DO
12	RD_CH_LE
13	RD_CH_GPIO1
14	RD_3V3
15	RD_CH_SPI_DI
16	RD_CH_SPI_CLK
17	RD_SPK-
18	RD_SPK+

SK18MM

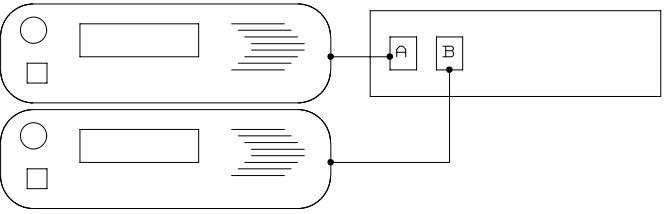
SOCKET A J3

1	RX AUDIO
2	13VB
3	RS485+
4	AGND/PTT
5	MIC AUDIO
6	RS485-
7	DGND
8	ON/OFF
9	SKBRJ
10	

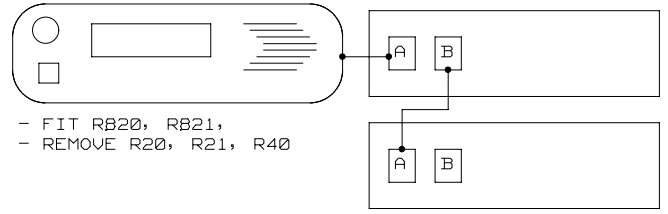
SOCKET B J2

1	RX AUDIO
2	13VB
3	RS485+
4	AGND
5	MIC AUDIO
6	RS485-
7	DGND
8	ON/OFF
9	SKBRJ
10	

MULTI-HEAD CONFIG



MULTI-RADIO CONFIG



TELEMETRY HEAD

FIT AS 0 OHM LINK:
R900, R901, R910, R912

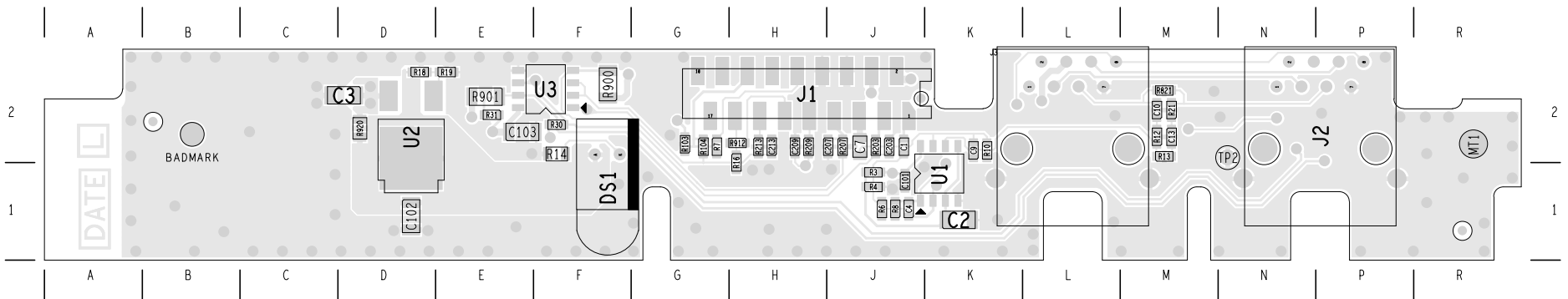
FIT AS 560 OHM: R920

CHANGE TO 0 OHM LINK:
C1, R6, R8, R9
C10, R12, R10, C7
(NOTE DIFFERENT PAD SIZES)

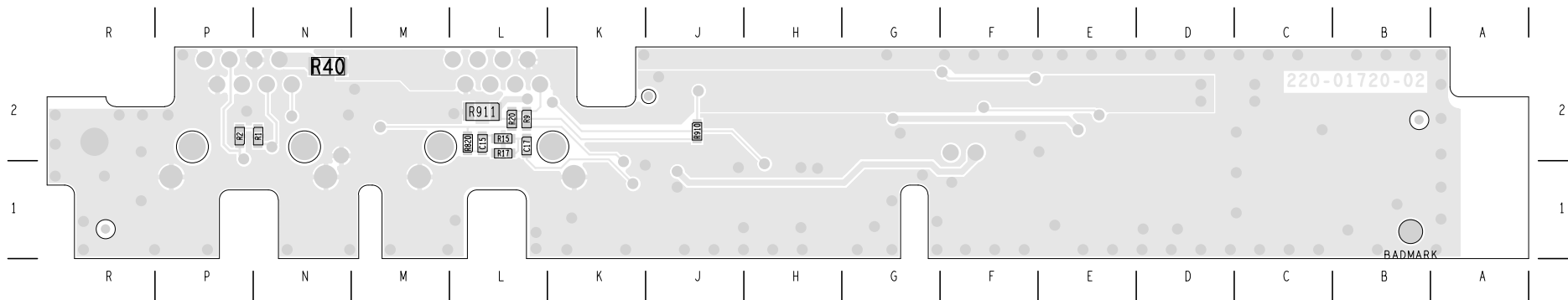
DO NOT INSTALL:
U1, U2, U3, J2
R911

R16, R15, R13, R21, R30, R31
R1, R2, R3, R4, R104, R18, R19, R16, R213
C4, C17, C15, C13, C9, C101, C2
C102, C213

© TAIT ELECTRONICS		A2
TM8200 RADIO REMOTE PCB		
?		
IPN:	ISSUE:	VARIANT NUMBER:
220-01720-02	A	?
FILE DATE: Mon Apr 04 09:23:38 2005		
ENGINEER:	FILE NAME:	SHEET NUMBER:
DAVID SLATEN	220_01720	1 OF 1



TAIT ELECTRONICS	IPN: 220-01720-02	ISS: A	DATE: 5Apr05	SCALE: NTS
TM8200 Radio Remote LAYOUT-PRIMARY-SIDE				



TAIT ELECTRONICS	IPN: 220-01720-02	ISS: A	DATE: 5Apr05	SCALE: NTS
TM820 Radio Remote LAYOUT-SECONDARY-SIDE				