

RAPID CHARGER / 快速充电器

KSC-25

SERVICE MANUAL / 维修手册

C version / C 版本

KENWOOD

Kenwood Corporation

© 2008-11 PRINTED IN JAPAN
B51-8855-00 (N) 366



无铅焊接通信产品  
保护环境建伍领先

⚠ 注意：本产品是无铅化焊接产品
在维修时请使用无铅焊锡
和相应的焊接工具
详细事项请访问如下网址了解：
<http://www.kenwoodhk.com.hk/>

This product complies with the **RoHS** directive for the European market.



This product uses Lead Free solder.

Document Copyrights

Copyright 2008 by Kenwood Corporation. All rights reserved.

No part of this manual may be reproduced, translated, distributed, or transmitted in any form or by any means, electronic, mechanical, photocopying, recording, or otherwise, for any purpose without the prior written permission of Kenwood.

Disclaimer

While every precaution has been taken in the preparation of this manual, Kenwood assumes no responsibility for errors or omissions. Neither is any liability assumed for damages resulting from the use of the information contained herein. Kenwood reserves the right to make changes to any products herein at any time for improvement purposes.

文档版权信息

Kenwood Corporation 拥有版权 2008。保留所有权利。

未经 Kenwood 公司预先书面同意，无论出于何种目的，均不得以任何形式或任何方式包括电子、机械、影印、录音或其他方式复制、翻译、分发或传播本手册的任何部分。

免责声明

Kenwood 公司在准备本文档时已采取所有必要的预防措施，恕不对错误或疏漏承担任何责任，也不对因使用本文中所含的信息而导致的损害负责。Kenwood 公司保留出于改进的需要而随时对文中的产品信息做出更改的权利。

CONTENTS / 目录

SPECIFICATIONS	3	规 格.....	3
PARTS LIST	3	零 件 表.....	3
CHARGER FLOW CHART.....	4	充电器流程图.....	5
SCHEMATIC DIAGRAM	6	原 理 图.....	6
PC BOARD	8	PC 板.....	8
BATTERY PACK	9	电 池.....	9

SPECIFICATIONS / 规格

Charging CurrentKNB-25A, KNB-26N : 1080mA±5%
 KNB-24L, KNB-35L : 945mA±5%
 Charging TimeKNB-24L : Approx. 150 minutes
 KNB-25A : Approx. 70 minutes
 KNB-26N : Approx. 120 minutes
 KNB-35L : Approx. 170 minutes
 Dimensions (Charger only)55 mm H x 105 mm W x 135 mm D
 Weight (Charger only).....Approx. 180g

充电电流..... KNB-25A, KNB-26N:1080mA±5%
 KNB-24L, KNB-35L:945mA±5%
 充电时间..... KNB-24L: 约 150 分
 KNB-25A: 约 70 分
 KNB-26N: 约 120 分
 KNB-35L: 约 170 分
 尺寸 (仅充电器时) 55 mm 高 × 105 mm 宽 × 135 mm 长
 重量 (仅充电器时) 约 180g

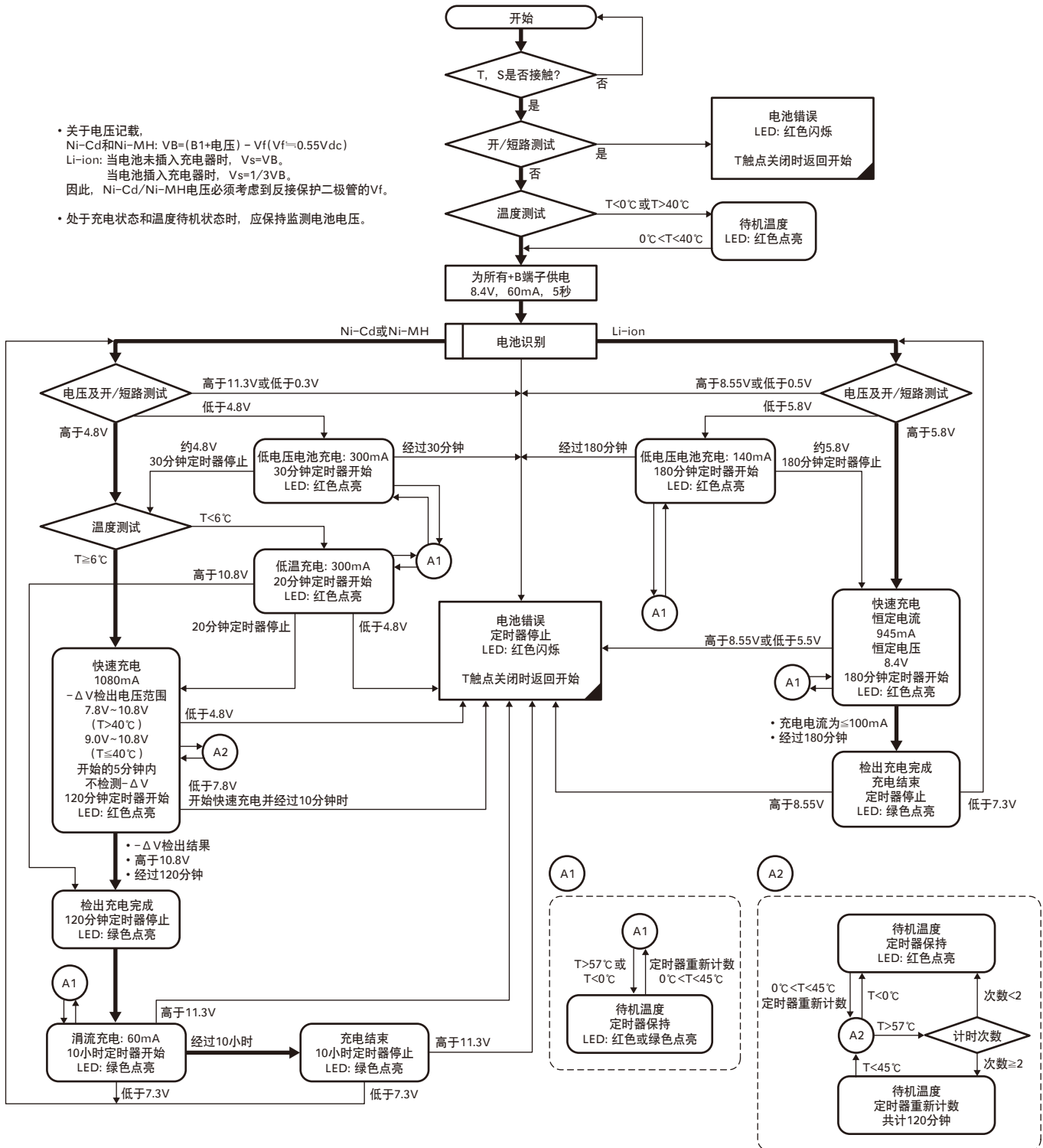
PARTS LIST / 零件表

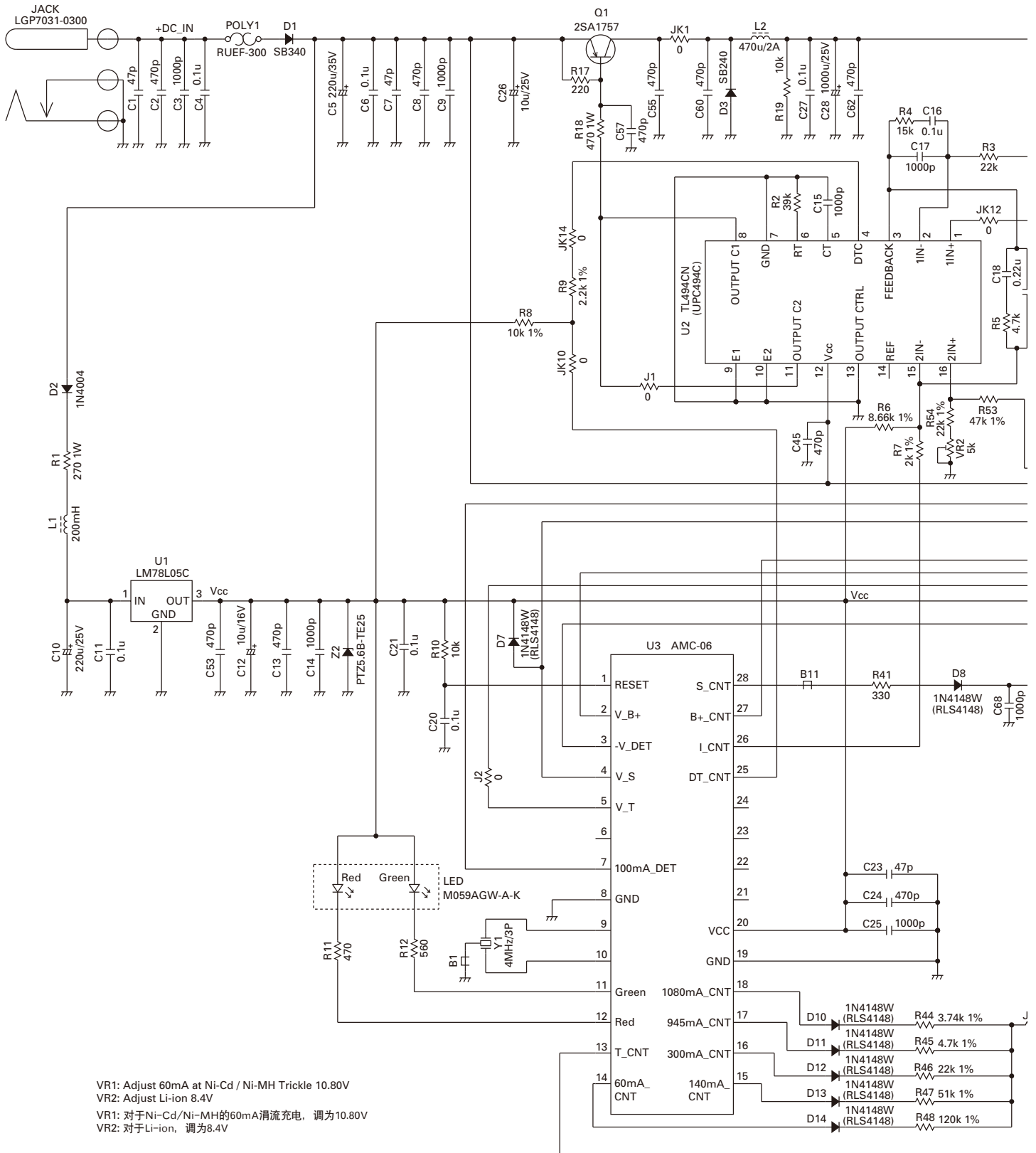
* : New Parts

Ref. No.	Address	New parts	Parts No.	Description	Destination
KSC-25					
			A02-3970-08	CABINET(UPPER)	
			A02-3968-08	CABINET(BOTTOM)	
			E03-0459-08	DC JACK	
		*	E23-1321-08	RELAY TERMINAL	
		*	E30-7683-08	AC POWER CORD	
		*	W08-1088-08	AC ADAPTER 100-240VAC 50/60HZ	

充电器流程图

- 关于电压记载。
Ni-Cd和Ni-MH: $V_B = (B1 + \text{电压}) - V_f (V_f = 0.55V_{dc})$
Li-ion: 当电池未插入充电器时, $V_s = V_B$ 。
当电池插入充电器时, $V_s = 1/3V_B$ 。
因此, Ni-Cd/Ni-MH电压必须考虑到反接保护二极管的 V_f 。
- 处于充电状态和温度待机状态时, 应保持监测电池电压。

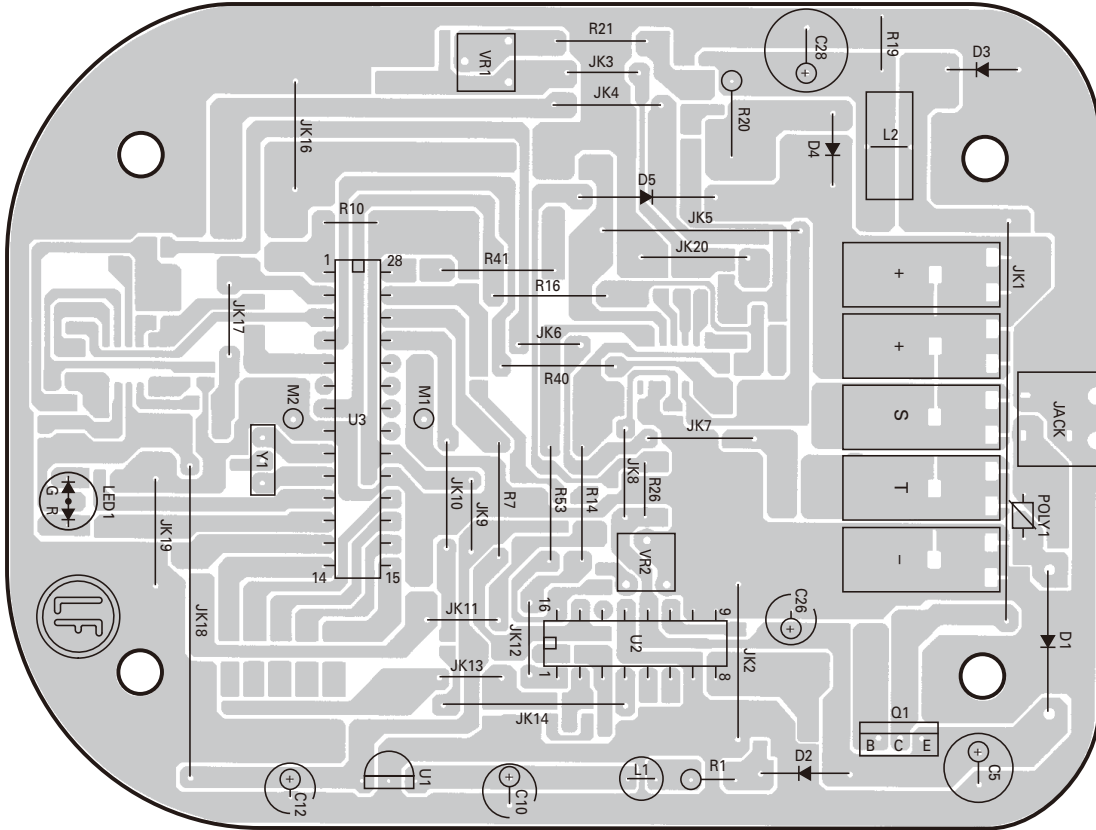




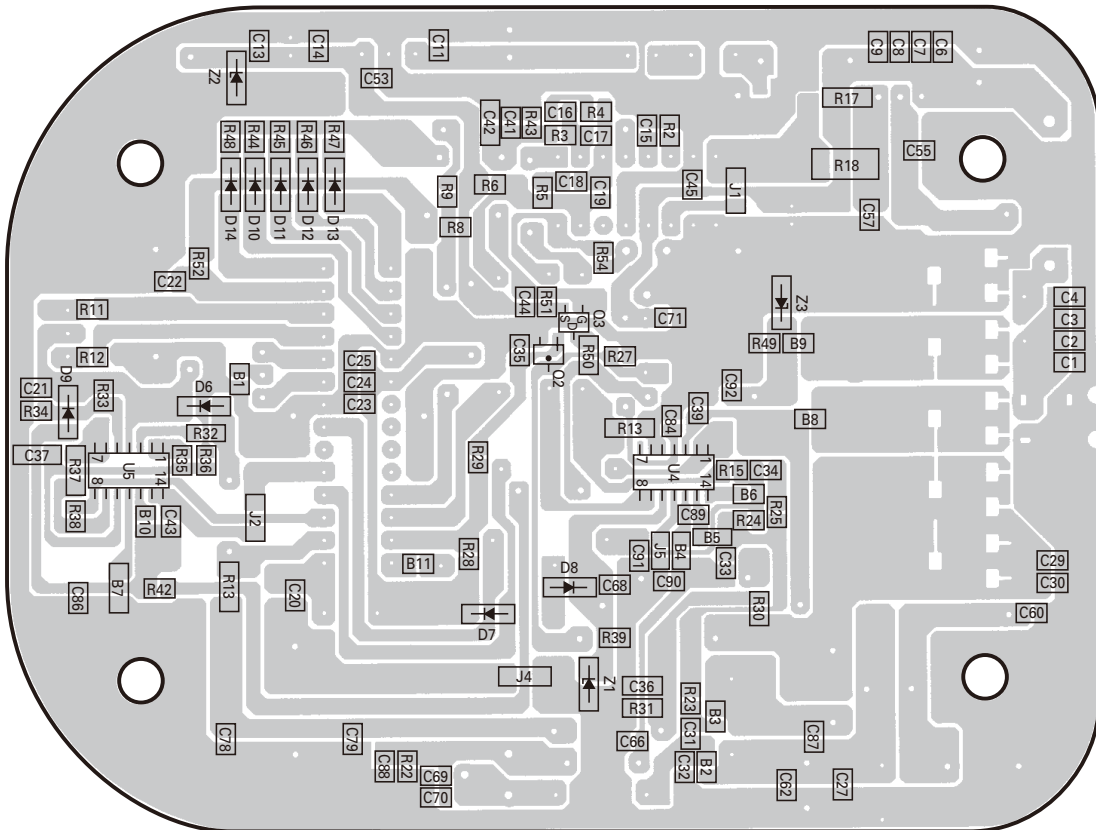
VR1: Adjust 60mA at Ni-Cd / Ni-MH Trickle 10.80V
 VR2: Adjust Li-ion 8.4V
 VR1: 对于Ni-Cd/Ni-MH的60mA涪流充电, 调为10.80V
 VR2: 对于Li-ion, 调为8.4V

PC BOARD / PC 板

CHARGER UNIT Component side view



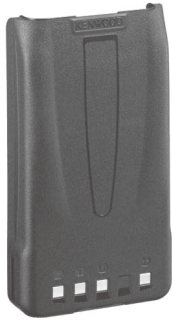
CHARGER UNIT Foil side view



BATTERY PACK / 电池

KNB-24L/35L (Li-ion Battery Pack / 锂离子电池)

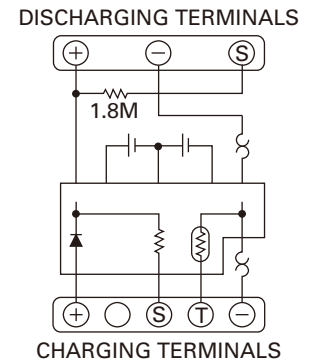
■ External View / 外视图



■ Specifications / 规格

Voltage / 电压 7.4V (3.7V x 2)

■ Schematic Diagram / 原理图



KNB-25A (Ni-Cd Battery Pack / 镍镉电池)

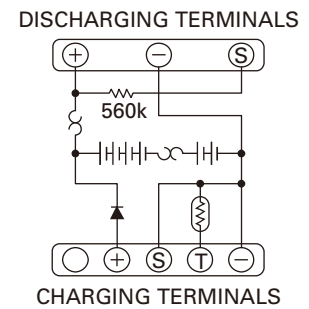
■ External View / 外视图



■ Specifications / 规格

Voltage / 电压 7.2V (1.2V x 6)

■ Schematic Diagram / 原理图



KNB-26N (Ni-MH Battery Pack / 镍氢电池)

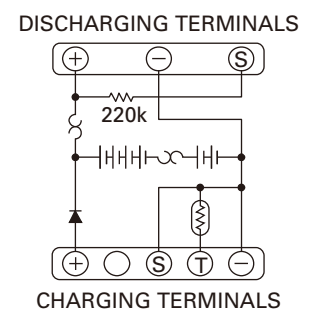
■ External View / 外视图



■ Specifications / 规格

Voltage / 电压 7.2V (1.2V x 6)

■ Schematic Diagram / 原理图



Kenwood Corporation

2967-3, Ishikawa-machi, Hachioji-shi, Tokyo, 192-8525 Japan

Kenwood U.S.A. Corporation

P.O. BOX 22745, 2201 East Dominguez Street, Long Beach,
CA 90801-5745, U.S.A.

Kenwood Electronics Canada Inc.

6070 Kestrel Road, Mississauga, Ontario, Canada L5T 1S8

Kenwood Electronics Deutschland GmbH

Rembrücker Str. 15, 63150 Heusenstamm, Germany

Kenwood Electronics Belgium N.V.

Leuvensesteenweg 248 J, 1800 Vilvoorde, Belgium

Kenwood Electronics France S.A.

L'Etoile Paris Nord 2, 50 Allée des Impressionnistes,
Bp 58416 Villepinte, 95944 Roissy Ch De Gaulle Cedex

Kenwood Electronics UK Limited

KENWOOD House, Dwight Road, Watford, Herts.,
WD18 9EB United Kingdom

Kenwood Electronics Europe B.V.

Amsterdamseweg 37, 1422 AC Uithoorn, The Netherlands

Kenwood Electronics Italia S.p.A.

Via G. Sirtori, 7/9 20129 Milano, Italy

Kenwood Ibérica, S.A.

Bolivia, 239-08020 Barcelona, Spain

Kenwood Electronics Australia Pty. Ltd.

(A.C.N. 001 499 074)

16 Giffnock Avenue, Centrecourt Estate, North Ryde, N.S.W. 2113 Australia

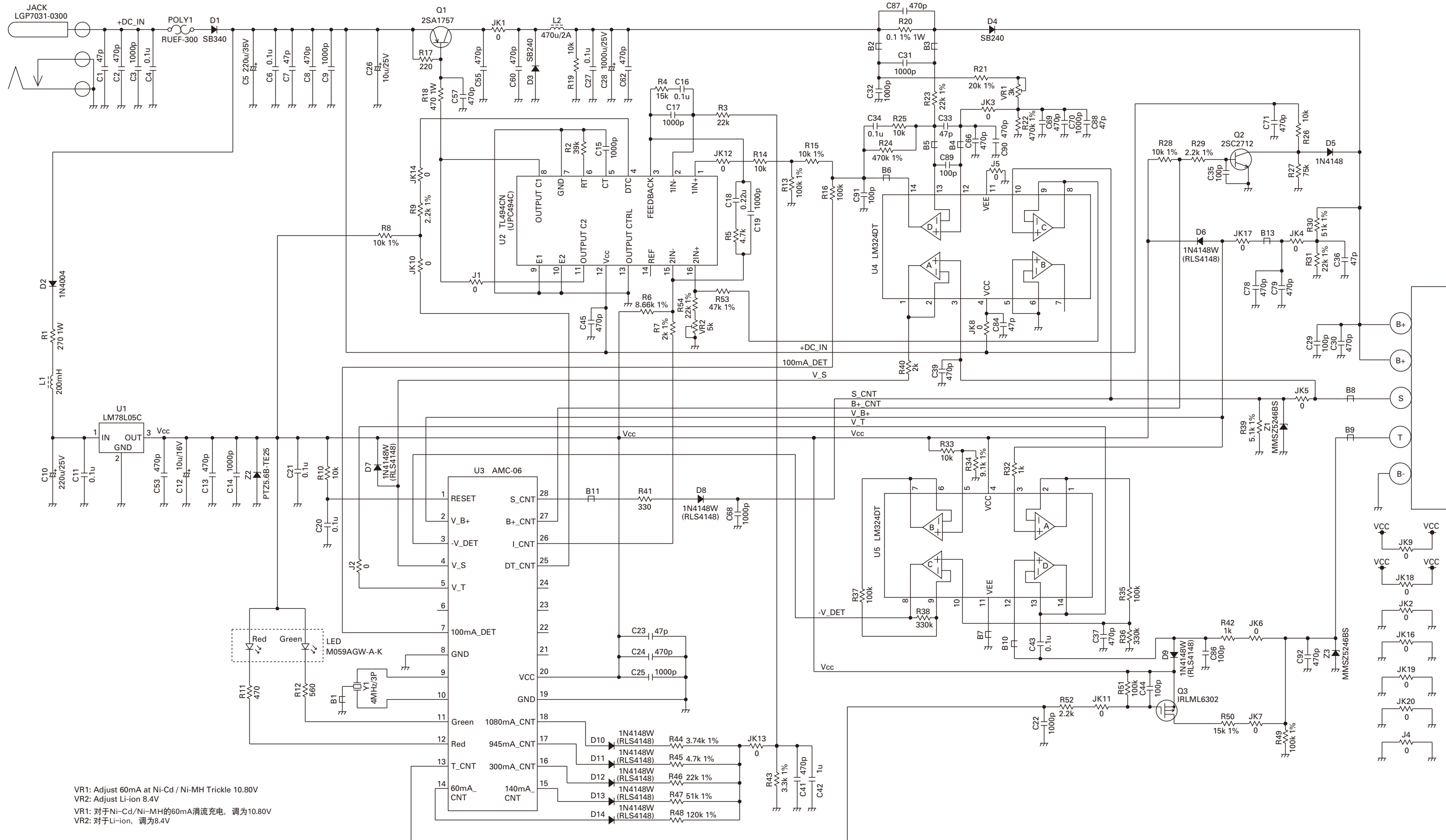
Kenwood Electronics (Hong Kong) Ltd.

Unit 3712-3724, Level 37, Tower one Metroplaza, 223 Hing Fong Road,
Kwai Fong, N.T., Hong Kong

Kenwood Electronics Singapore Pte Ltd

1 Ang Mo Kio Street 63, Singapore 569110





VR1: Adjust 60mA at Ni-Cd / Ni-MH Trickle 10.80V
 VR2: Adjust Li-ion 8.4V
 VR1: 对于Ni-Cd/Ni-MH的60mA涪充, 调为10.80V
 VR2: 对于Li-ion, 调为8.4V