

RAPID CHARGER / 快速充电器

KSC-25L

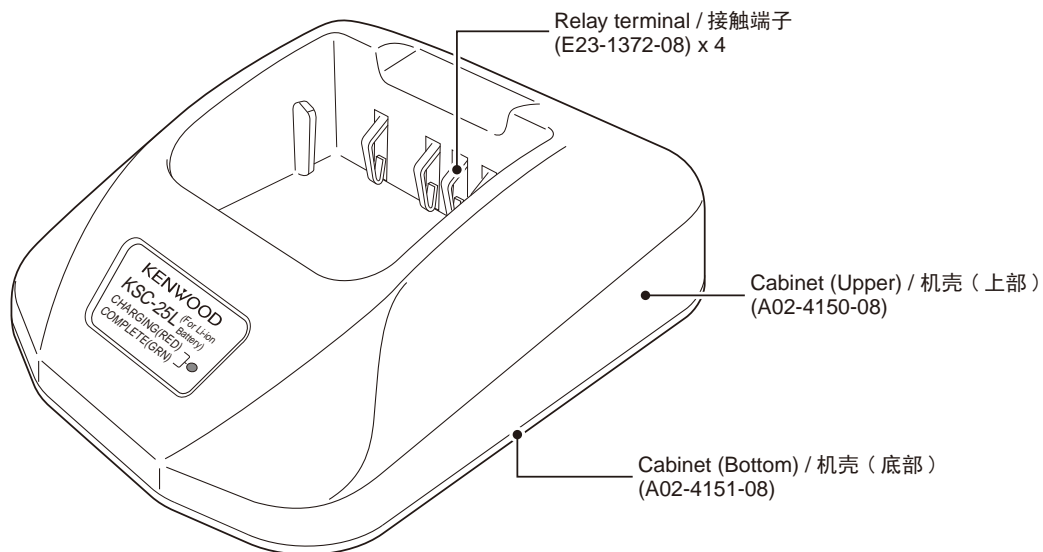
SERVICE MANUAL / 维修手册

C version / C 版本

KENWOOD

JVC KENWOOD Corporation

© 2011-11 PRINTED IN JAPAN
B51-8998-00 (Y) PDF



KSC-25L

Document Copyrights

Copyright 2011 by JVC KENWOOD Corporation. All rights reserved.

No part of this manual may be reproduced, translated, distributed, or transmitted in any form or by any means, electronic, mechanical, photocopying, recording, or otherwise, for any purpose without the prior written permission of JVC KENWOOD Corporation.

Disclaimer

While every precaution has been taken in the preparation of this manual, JVC KENWOOD Corporation assumes no responsibility for errors or omissions. Neither is any liability assumed for damages resulting from the use of the information contained herein. JVC KENWOOD Corporation reserves the right to make changes to any products herein at any time for improvement purposes.

文档版权信息

JVC 建伍株式会社拥有版权 2011。保留所有权利。

未经 JVC 建伍株式会社预先书面同意，无论出于何种目的，均不得以任何形式或任何方式包括电子、机械、影印、录音或其他方式复制、翻译、分发或传播本手册的任何部分。

免责声明

JVC 建伍株式会社在准备本文档时已采取所有必要的预防措施，恕不对错误或疏漏承担任何责任，也不对因使用本文档中所含的信息而导致的损害负责。JVC 建伍株式会社保留出于改进的需要而随时对文中的产品信息做出更改的权利。

SPECIFICATIONS / 规格

Input Voltage AC 120~240V 50/60Hz
(Use the supplied AC adapter)

Charging Current 945mA±5%

Charging Time KNB-55L: Approx. 150 min.
KNB-57L: Approx. 170 min.

Usable Temperature Range 0°C to 40°C

Dimensions (W x H x D, charger only)... 105 x 54.6 x 135 mm

Weight (charger only) Approx. 170g

交流电压 AC120 ~ 240V 50/60Hz
(请使用提供的交直流适配器)

充电电流 945mA±5%

充电时间 KNB-55L 约 150 分
KNB-57L 约 170 分

使用温度范围 0°C ~ +40°C

尺寸 (宽 × 高 × 长) 105 x 54.6 x 135 mm

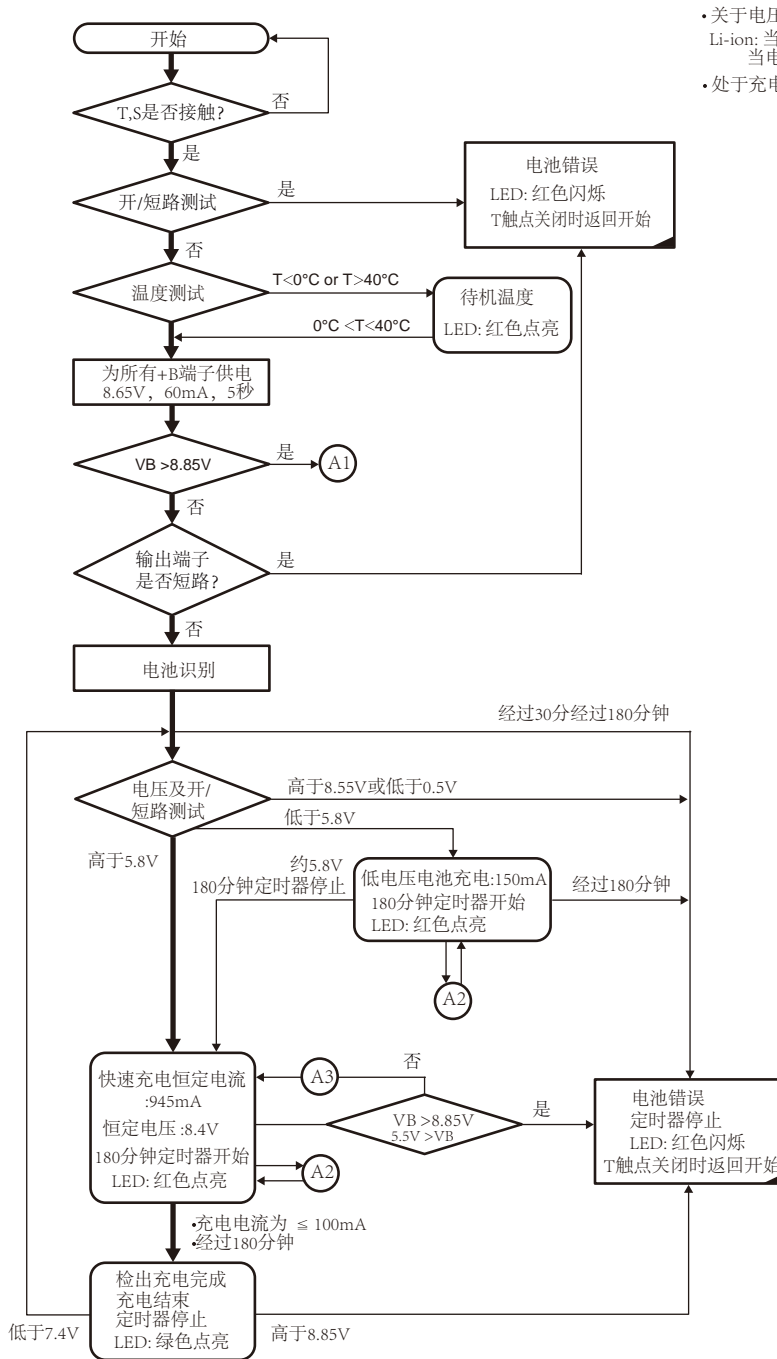
重量 (仅充电器时) 约 170g

PARTS LIST / 零件表

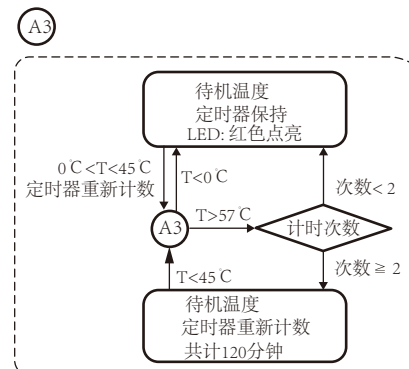
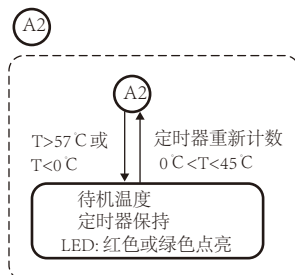
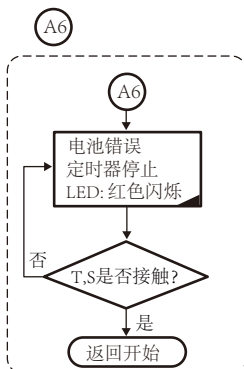
KSC-25L		* : New Parts			
Ref. No.	Address	New parts	Parts No.	Description	Destination
KSC-25L					
		*	A02-4150-08	CABINET(UPPER) / 机壳 (上部)	
		*	A02-4151-08	CABINET(BOTTOM) / 机壳 (底部)	
		*	B62-2338-00	INSTRUCTION MANUAL / 使用说明书	
		*	E03-0466-08	DC JACK / DC 插口	
		*	E23-1372-08	RELAY TERMINAL / 接触端子	
		*	W08-1265-08	CHARGER / 充电器	
		*	W08-1271-08	AC ADAPTER / 交直流适配器	

Note: The AC adapter and AC cord are arranged as a pair.

流程图

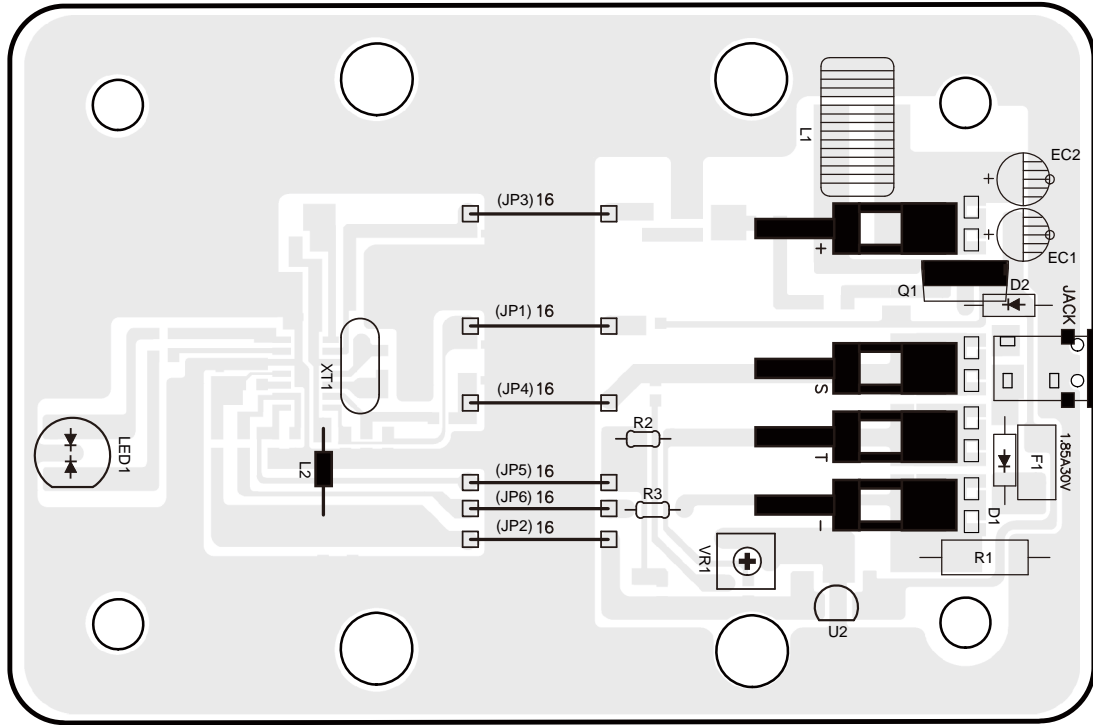


- 关于电压记载,
Li-ion: 当电池未插入充电器时, $V_S = V_B$ 。
当电池插入充电器时, $V_S = 1/3 V_B$ 。
- 处于充电状态和温度待机状态时, 应保持监测电池电压。

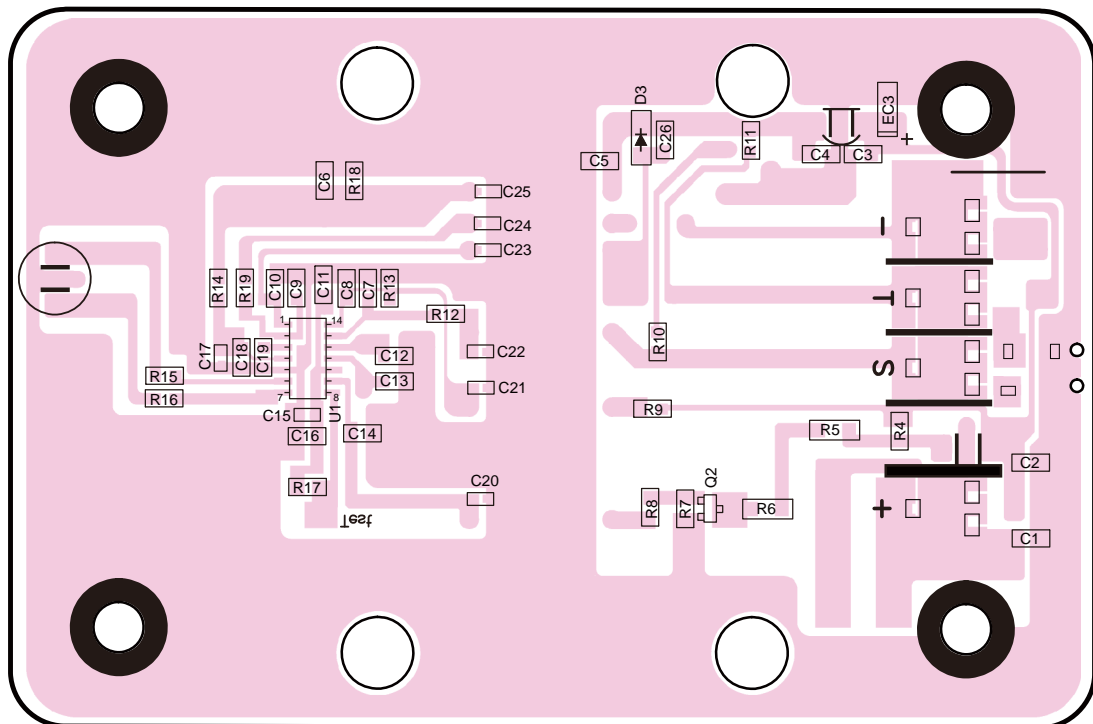


PC BOARD / 印刷电路板

CHARGER UNIT Component side view / 零件面

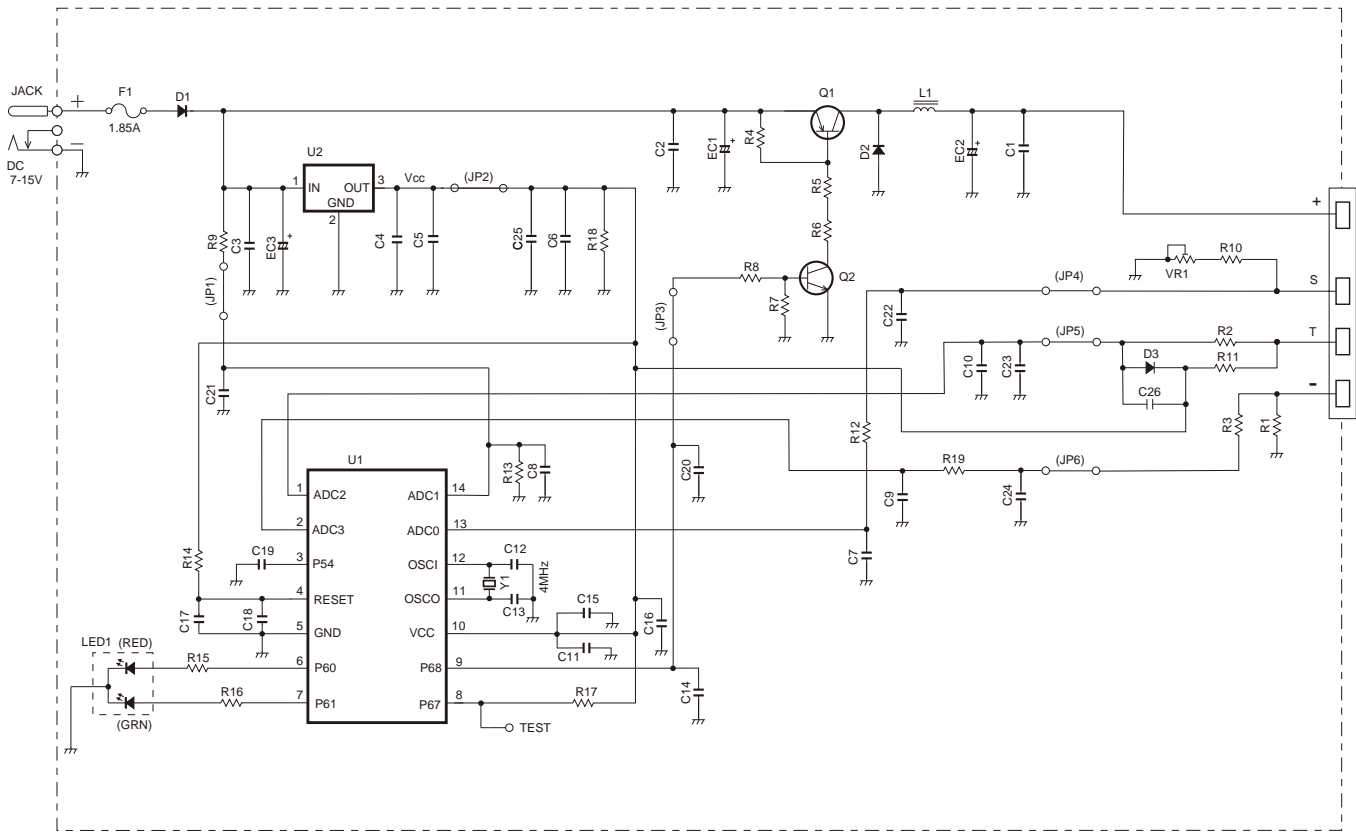


CHARGER UNIT Foil side view / 焊锡面



KSC-25L

SCHEMATIC DIAGRAM / 原理图



JVC KENWOOD Corporation

3-12, Moriyacho, Kanagawa-ku, Yokohama-shi,
Kanagawa, 221-0022 Japan

Kenwood U.S.A. Corporation

P.O. BOX 22745, 2201 East Dominguez Street, Long Beach,
CA 90801-5745, U.S.A.

Kenwood Electronics Canada Inc.

6070 Kestrel Road, Mississauga, Ontario, Canada L5T 1S8

Kenwood Electronics Deutschland GmbH

Rembrücker Str. 15, 63150 Heusenstamm, Germany

Kenwood Electronics Belgium N.V.

Leuvensesteenweg 248 J, 1800 Vilvoorde, Belgium

Kenwood Electronics France S.A.

L'Etoile Paris Nord 2, 50 Allée des Impressionnistes,
Bp 58416 Villepinte, 95944 Roissy Ch De Gaulle Cedex

Kenwood Electronics UK Limited

Kenwood House, Dwight Road, Watford, Herts.,
WD18 9EB United Kingdom

Kenwood Electronics Europe B.V.

Amsterdamseweg 37, 1422 AC Uithoorn, The Netherlands

Kenwood Electronics Italia S.p.A.

Via G. Sirtori, 7/9 20129 Milano, Italy

Kenwood Ibérica, S.A.

Carretera de Rubí, 88 Planta 1 A 08174 Sant Cugat del Vallès
Barcelona, Spain

Kenwood Electronics Australia Pty. Ltd.

Talavera Business Park Building A, 4 Talavera Road,
North Ryde NSW 2113 Australia

Kenwood Electronics (Hong Kong) Ltd.

Suite 2504, 25/F, Tower 2, Nina Tower, No. 8 Yeung Uk Road,
Tsuen Wan, New Territories, Hong Kong

Kenwood Electronics Singapore Pte Ltd

1 Ang Mo Kio Street 63, Singapore 569110