

KENWOOD

Document Copyrights

Copyright 2006 by Kenwood Corporation. All rights reserved.

No part of this manual may be reproduced, translated, distributed, or transmitted in any form or by any means, electronic, mechanical, photocopying, recording, or otherwise, for any purpose without the prior written permission of Kenwood.

Disclaimer

While every precaution has been taken in the preparation of this manual, Kenwood assumes no responsibility for errors or omissions. Neither is any liability assumed for damages resulting from the use of the information contained herein. Kenwood reserves the right to make changes to any products herein at any time for improvement purposes.

RAPID CHARGER

KSC-28

SERVICE MANUAL

KENWOOD

© 2001-11 PRINTED IN JAPAN
B51-8616-00 (N) 73



Specifications

Input voltage AC 120V (Use the supplied AC adapter)
 Charging time KNB-27N : Approx. 150 minutes
 Usable temperature range 0°C to 40°C (32°F to 104°F)
 Dimensions (W x H x D, charger only)
 81.3 (3-13/64) x 59.3 (2-21/64) x 90 (4-35/64) mm (inches)
 Weight (Charger only) Approx. 100g / 3.5oz

Parts List

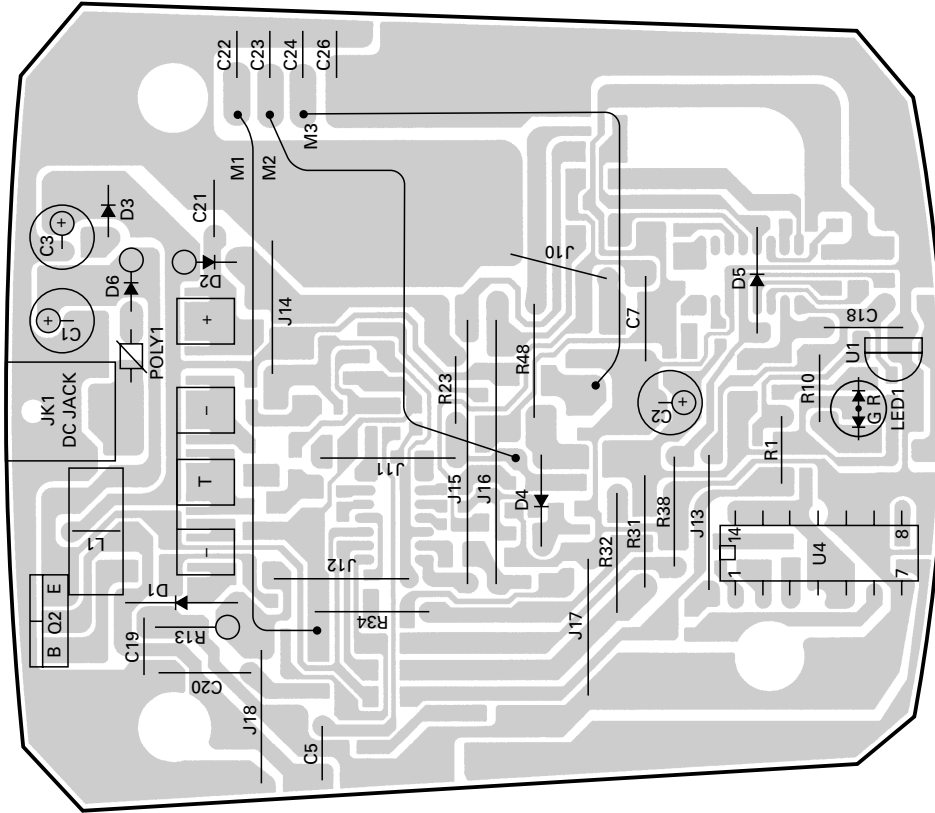
* : New Parts

Ref. No.	New parts	Parts No.	Description
	*	J19-5446-08	Holder
	*	W08-0937-05	AC adapter
	*	W08-0938-15	Charger
			AC 120V, 60Hz

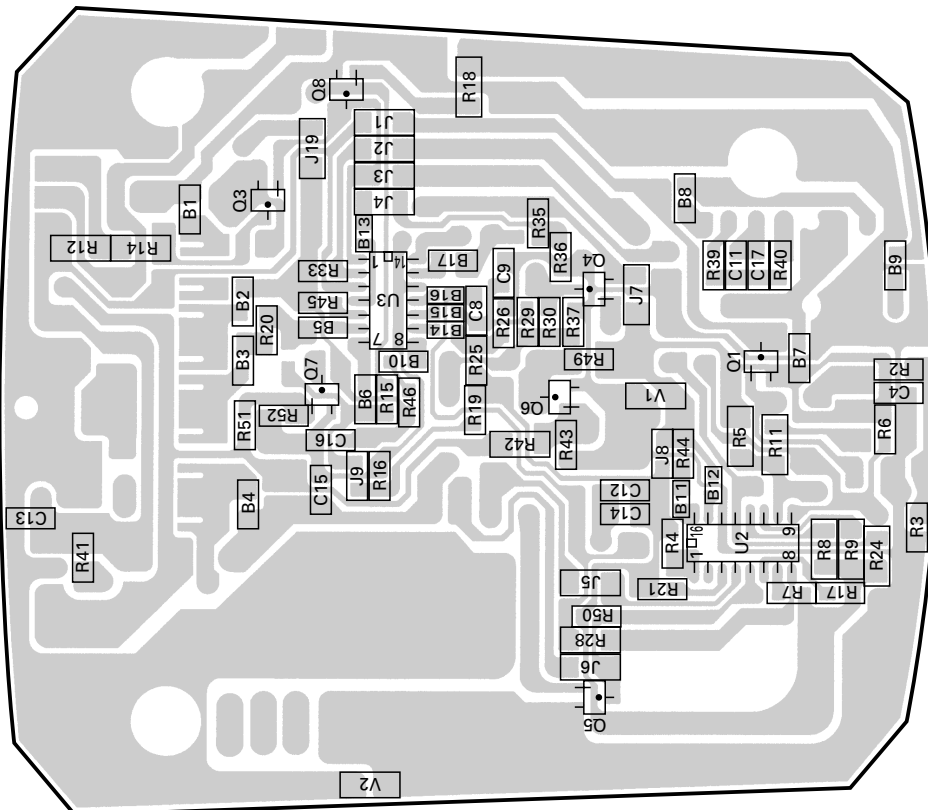
KSC-28

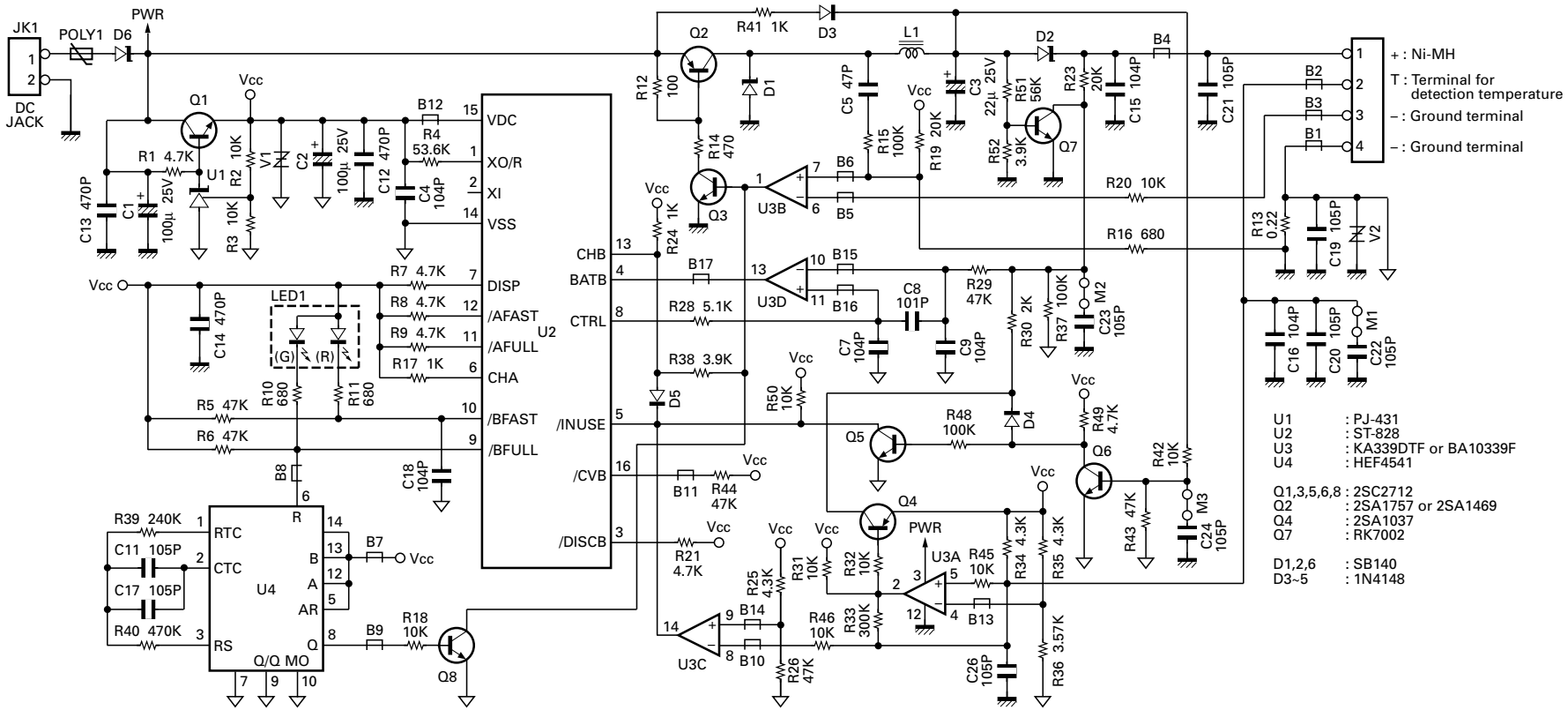
PC BOARD VIEWS

CHARGER UNIT Component side view



CHARGER UNIT Foil side view





+ : Ni-MH
 T : Terminal for detection temperature
 - : Ground terminal
 - : Ground terminal

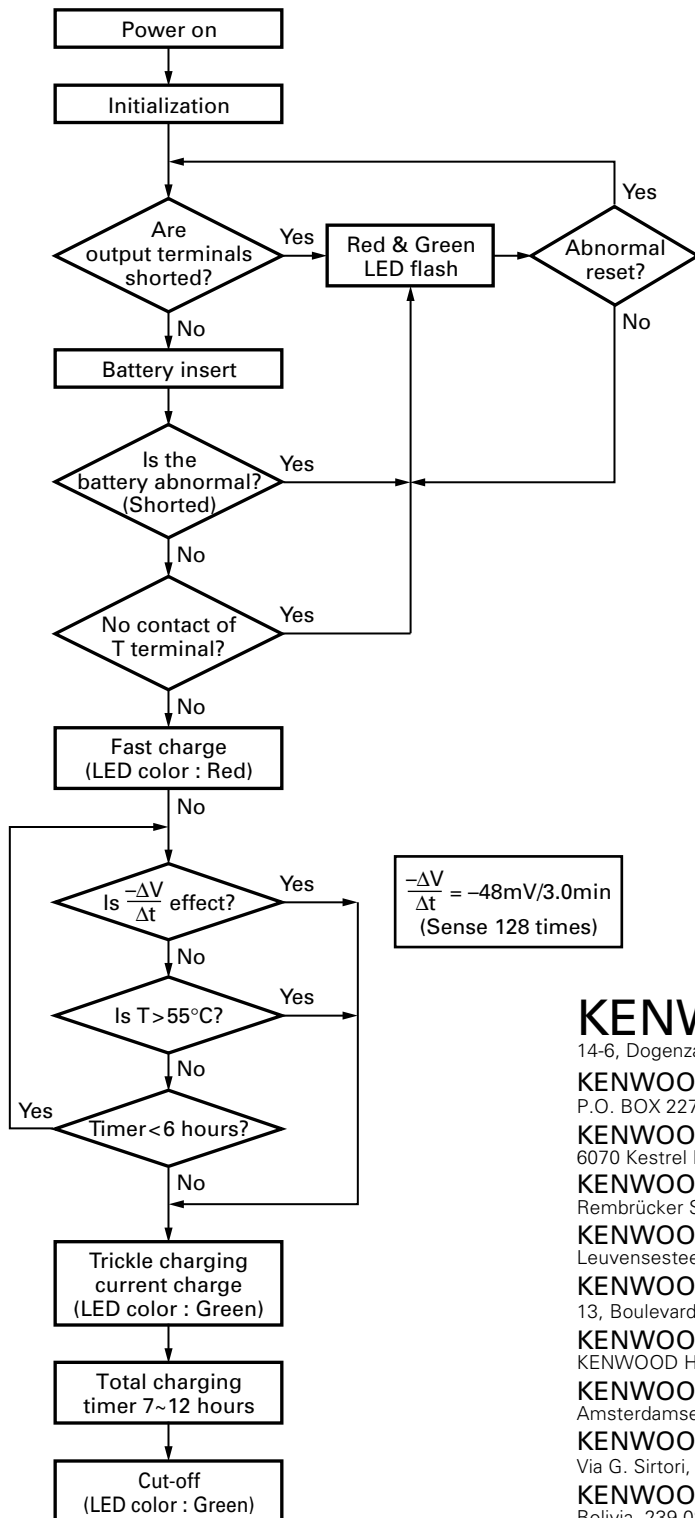
- U1 : PJ-431
- U2 : ST-828
- U3 : KA339DTF or BA10339F
- U4 : HEF4541
- Q1,3,5,6,8 : 2SC2712
- Q2 : 2SA1757 or 2SA1469
- Q4 : 2SA1037
- Q7 : RK7002
- D1,2,6 : SB140
- D3-5 : 1N4148

SCHEMATIC DIAGRAM

KSC-28

CIRCUIT DESCRIPTION

Charger Flow Chart



$$\frac{-\Delta V}{\Delta t} = -48\text{mV}/3.0\text{min}$$

(Sense 128 times)

KENWOOD CORPORATION

14-6, Dogenzaka 1-chome, Shibuya-ku, Tokyo 150-8501, Japan

KENWOOD SERVICE CORPORATION

P.O. BOX 22745, 2201 East Dominguez Street, Long Beach, CA 90801-5745, U.S.A.

KENWOOD ELECTRONICS CANADA INC.

6070 Kestrel Road, Mississauga, Ontario, Canada L5T 1S8

KENWOOD ELECTRONICS DEUTSCHLAND GMBH

Rembrücker Str. 15, 63150 Heusenstamm, Germany

KENWOOD ELECTRONICS BELGIUM N.V.

Leuvensesteenweg 248 J, 1800 Vilvoorde, Belgium

KENWOOD ELECTRONICS FRANCE S.A.

13, Boulevard Ney, 75018 Paris, France

KENWOOD ELECTRONICS U.K. LIMITED

KENWOOD House, Dwight Road, Watford, Herts., WD1 8EB United Kingdom

KENWOOD ELECTRONICS EUROPE B.V.

Amsterdamseweg 37, 1422 AC Uithoorn, The Netherlands

KENWOOD ELECTRONICS ITALIA S.p.A.

Via G. Sirtori, 7/9 20129 Milano, Italy

KENWOOD IBERICA S.A.

Bolivia, 239-08020 Barcelona, Spain

KENWOOD ELECTRONICS AUSTRALIA PTY. LTD.

(A.C.N. 001 499 074)

16 Giffnock Avenue, Centrecourt Estate, North Ryde, N.S.W. 2113 Australia

KENWOOD ELECTRONICS (HONG KONG) LTD.

Unit 3712-3724, Level 37, Tower one Metroplaza, 223 Hing Fong Road, Kwai Fong, N.T., Hong Kong

KENWOOD ELECTRONICS TECHNOLOGIES(S) PTE LTD.

Sales Marketing Division

1 Ang Mo Kio Street 63, Singapore 569110

