

KENWOOD

Document Copyrights

Copyright 2006 by Kenwood Corporation. All rights reserved.

No part of this manual may be reproduced, translated, distributed, or transmitted in any form or by any means, electronic, mechanical, photocopying, recording, or otherwise, for any purpose without the prior written permission of Kenwood.

Disclaimer

While every precaution has been taken in the preparation of this manual, Kenwood assumes no responsibility for errors or omissions. Neither is any liability assumed for damages resulting from the use of the information contained herein. Kenwood reserves the right to make changes to any products herein at any time for improvement purposes.

RAPID CHARGER

KSC-31

SERVICE MANUAL

KENWOOD

© 2004-2 PRINTED IN JAPAN
B51-8685-00 (N) 1111



Specifications

Input voltage K : AC 120V (Use the supplied AC adapter)
 E : AC 230V (Use the supplied AC adapter)

Charging current 850mA±5%

Charging time KNB-29N : Approx. 180 minutes
 KNB-30A : Approx. 120 minutes

Usable temperature range 5°C to 40°C (41°F to 104°F)

Dimensions (W x H x D, charger only)
 86.3 (3-3/8) x 46.2 (1-7/8) x 100.0 (4) mm (inches)

Weight (Charger only) Approx. 100g / 0.22 lbs

Parts List

* : New Parts

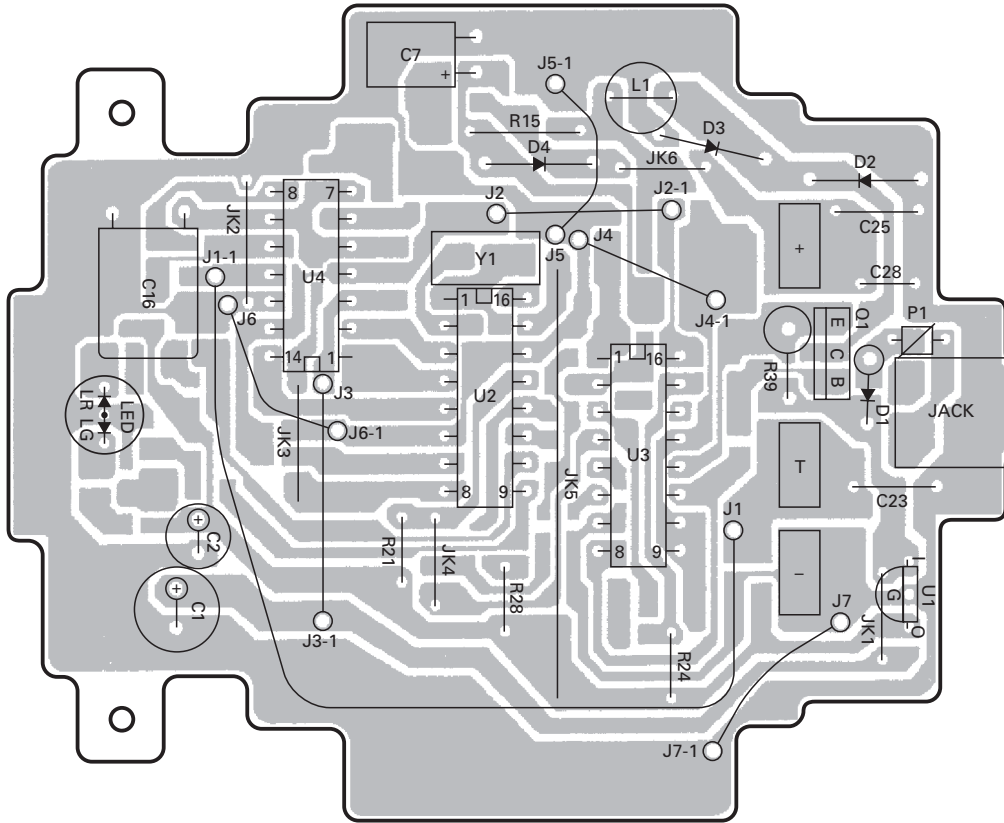
△ : Safety critical components

KSC-31 (Y56-558X-XX)

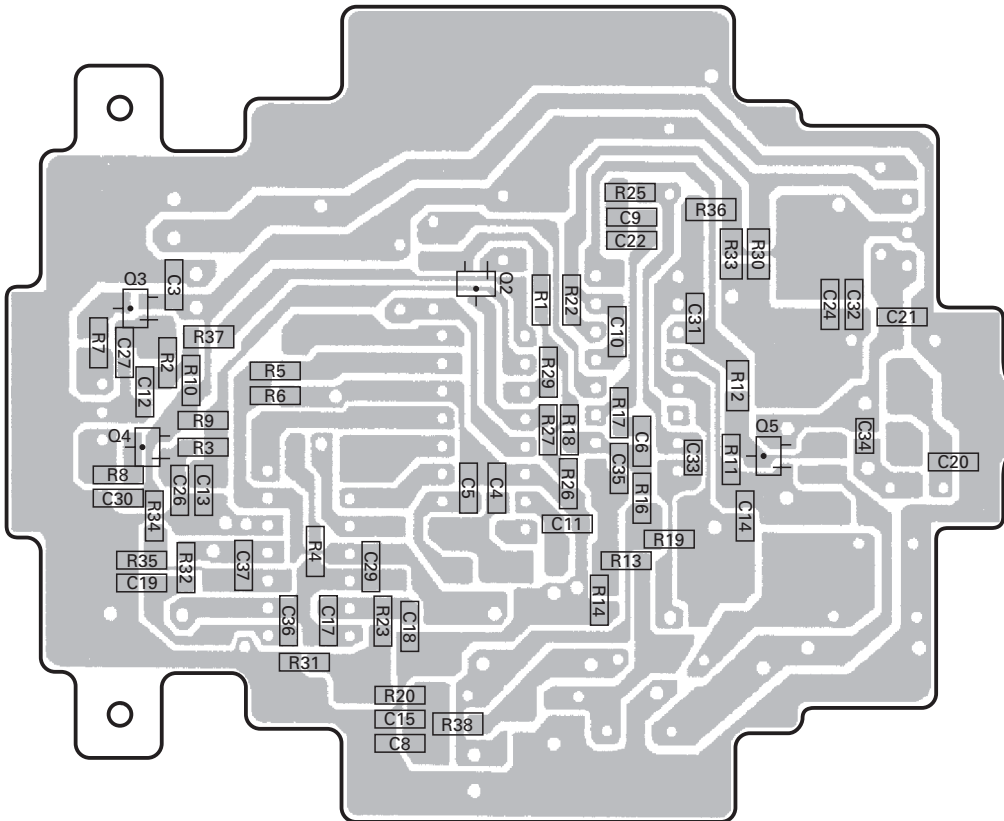
Ref. No.	New parts	Parts No.	Description	Destination
	*	A02-3861-08	Cabinet (Upper)	
		A02-3862-08	Cabinet (Bottom)	
	*	B43-1170-08	Badge	
	*	B62-1782-10	Instruction manual	K
	*	B62-1783-10	Instruction manual	E
	*	B72-2240-08	Model name plate	
		E03-0200-08	DC jack	
	*	E23-1258-08	Relay terminal	
		N83-2610-45	Pan head taptite screw	
	*	W02-3672-08	Electric circuit module	
△	*	W08-0970-05	AC adapter 120V AC 60Hz	K
△	*	W08-0971-05	AC adapter 230V AC 50/60Hz	E

PC BOARD

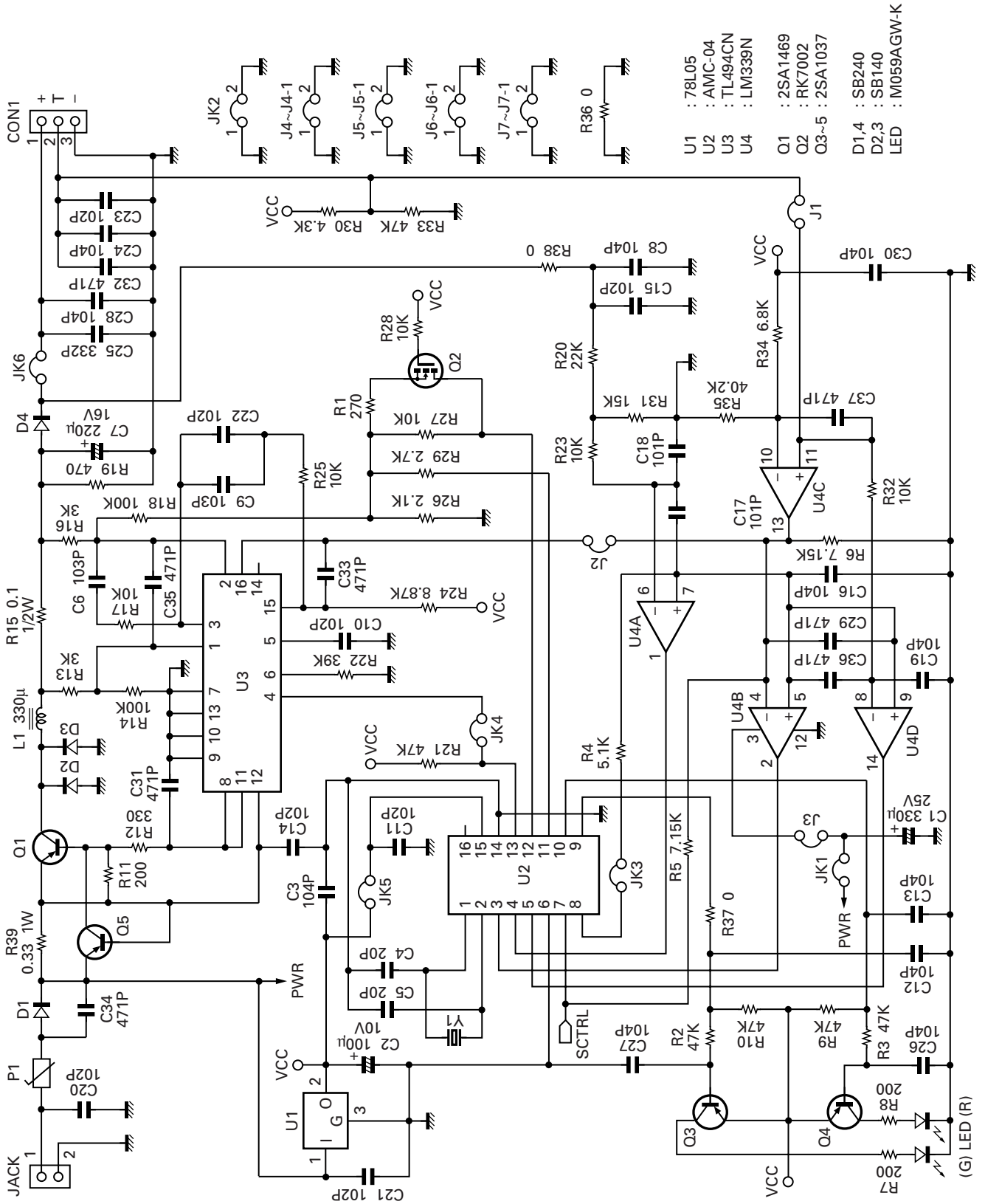
ELECTRIC CIRCUIT MODULE (W02-3672-08) Component side view



ELECTRIC CIRCUIT MODULE (W02-3672-08) Foil side view

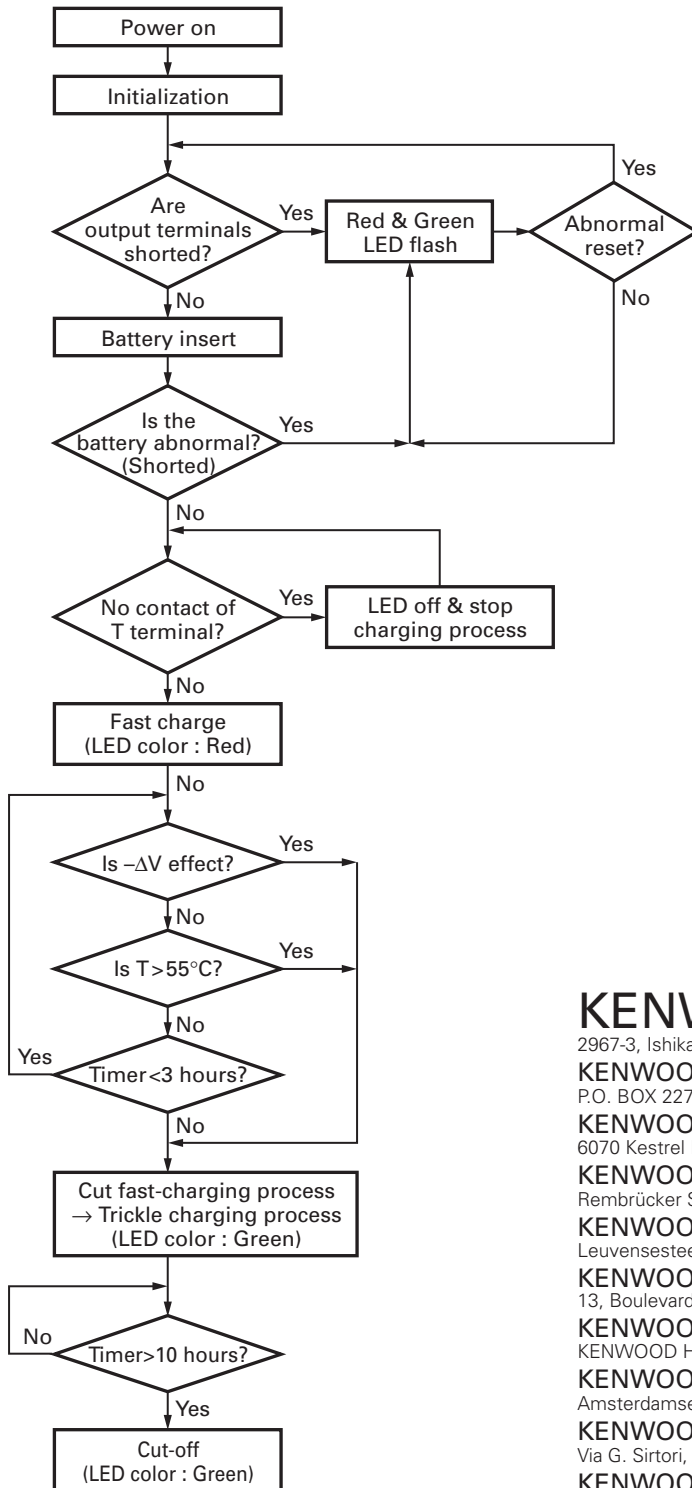


SCHEMATIC DIAGRAM



CIRCUIT DESCRIPTION

Charger Flow Chart



KENWOOD CORPORATION

2967-3, Ishikawa-machi, Hachioji-shi, Tokyo, 192-8525 Japan

KENWOOD U.S.A. CORPORATION

P.O. BOX 22745, 2201 East Dominguez Street, Long Beach, CA 90801-5745, U.S.A.

KENWOOD ELECTRONICS CANADA INC.

6070 Kestrel Road, Mississauga, Ontario, Canada L5T 1S8

KENWOOD ELECTRONICS DEUTSCHLAND GMBH

Rembrücker Str. 15, 63150 Heusenstamm, Germany

KENWOOD ELECTRONICS BELGIUM N.V.

Leuvensesteenweg 248 J, 1800 Vilvoorde, Belgium

KENWOOD ELECTRONICS FRANCE S.A.

13, Boulevard Ney, 75018 Paris, France

KENWOOD ELECTRONICS U.K. LIMITED

KENWOOD House, Dwight Road, Watford, Herts., WD18 9EB United Kingdom

KENWOOD ELECTRONICS EUROPE B.V.

Amsterdamseweg 37, 1422 AC Uithoorn, The Netherlands

KENWOOD ELECTRONICS ITALIA S.p.A.

Via G. Sirtori, 7/9 20129 Milano, Italy

KENWOOD IBERICA S.A.

Bolivia, 239-08020 Barcelona, Spain

KENWOOD ELECTRONICS AUSTRALIA PTY. LTD.

(A.C.N. 001 499 074)

16 Giffnock Avenue, Centrecourt Estate, North Ryde, N.S.W. 2113 Australia

KENWOOD ELECTRONICS (HONG KONG) LTD.

Unit 3712-3724, Level 37, Tower one Metroplaza, 223 Hing Fong Road, Kwai Fong, N.T., Hong Kong

KENWOOD ELECTRONICS SINGAPORE PTE LTD.

1 Genting Lane #07-00 Kenwood Building, Singapore 349544

