

RAPID CHARGER

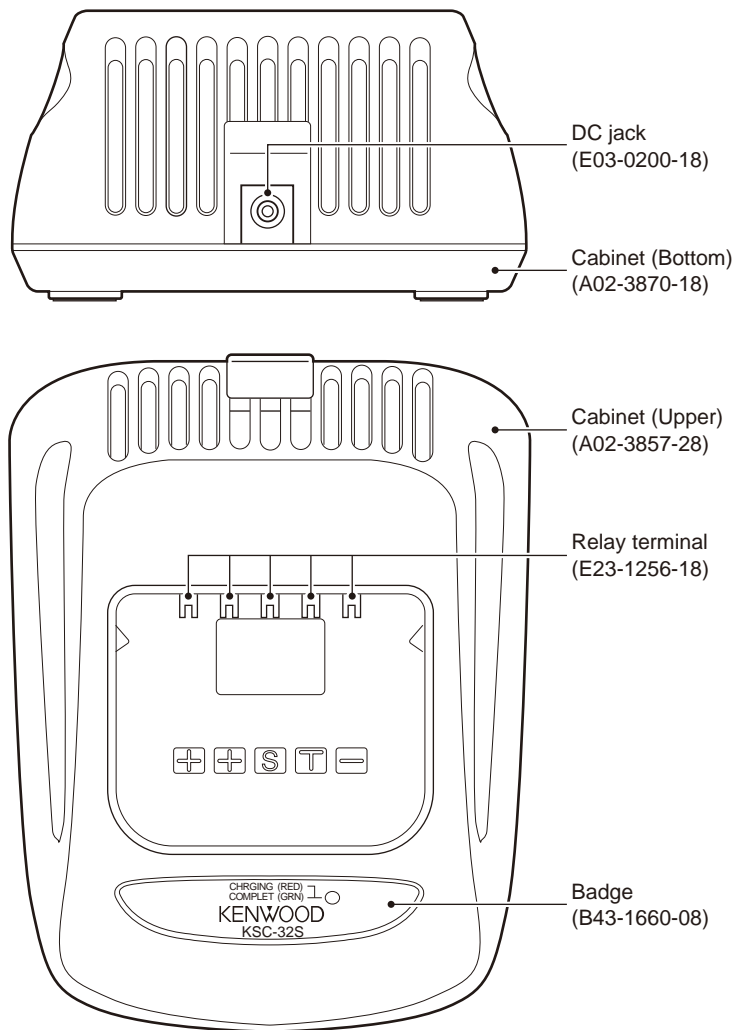
KSC-32S

SERVICE MANUAL

KENWOOD

Kenwood Corporation

© 2011-2 PRINTED IN JAPAN
B51-8961-00 (Y) PDF



CONTENTS

PARTS LIST	2
FLOW CHART.....	3
SCHEMATIC DIAGRAM	4
PC BOARD.....	5
SPECIFICATIONS.....	BACK COVER



KSC-32S

Document Copyrights

Copyright 2011 by Kenwood Corporation. All rights reserved.

No part of this manual may be reproduced, translated, distributed, or transmitted in any form or by any means, electronic, mechanical, photocopying, recording, or otherwise, for any purpose without the prior written permission of Kenwood.

Disclaimer

While every precaution has been taken in the preparation of this manual, Kenwood assumes no responsibility for errors or omissions. Neither is any liability assumed for damages resulting from the use of the information contained herein. Kenwood reserves the right to make changes to any products herein at any time for improvement purposes.

PARTS LIST

* : New Parts

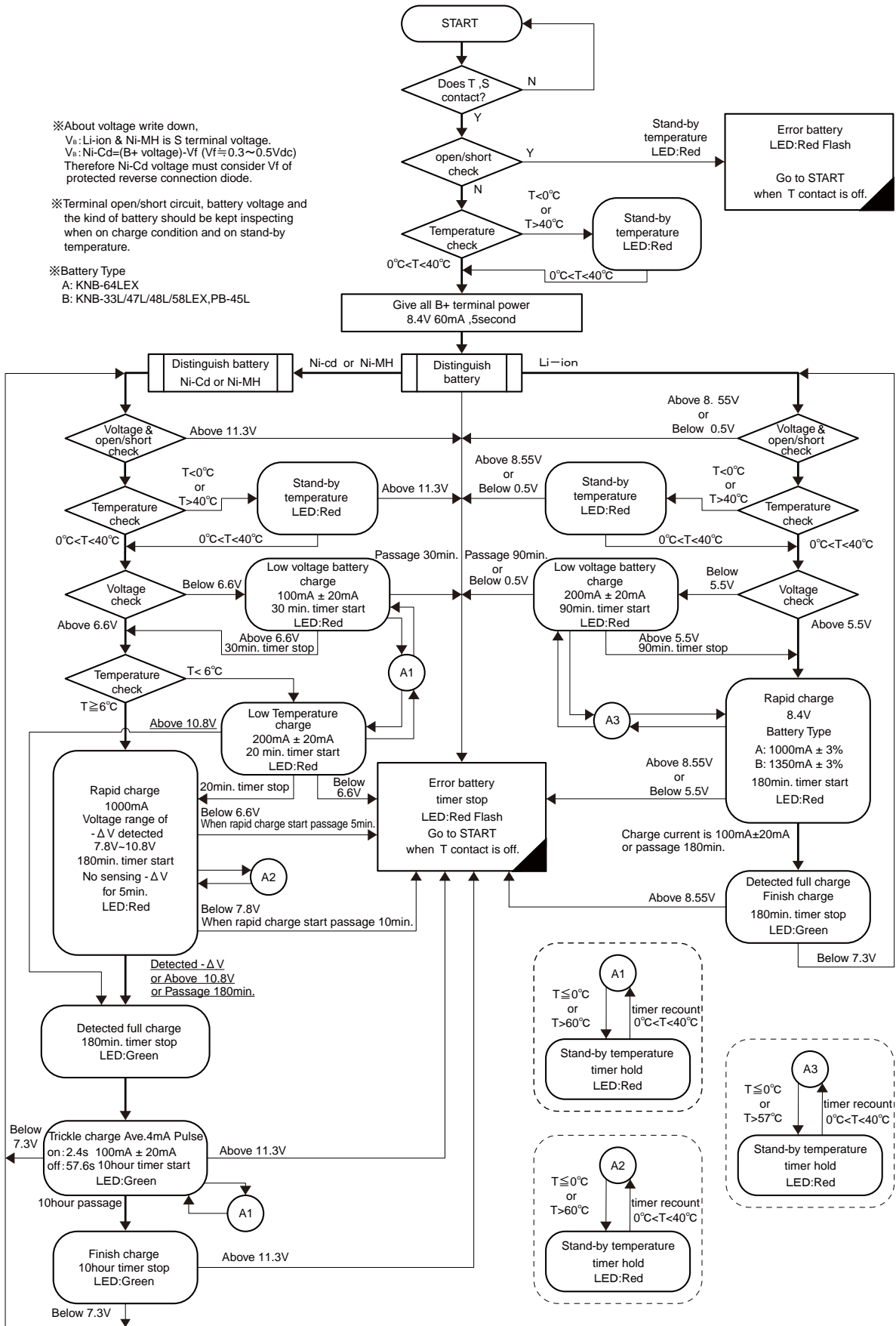
Ref. No.	Address	New parts	Parts No.	Description	Destination
KSC-32S					
		*	A02-3857-28	CABINET(UPPER)	
		*	A02-3870-18	CABINET(BOTTOM)	
		*	B43-1660-08	BADGE	
		*	E03-0200-18	DC JACK	
		*	E23-1256-18	RELAY TERMINAL	
			N80-2610-43	SCREW	
		*	W08-1255-08	CHARGER	
		*	W08-1212-48	AC ADAPTER T	T
		*	W08-1241-05	AC ADAPTER E	E

FLOW CHART

※About voltage write down,
 V_s : Li-ion & Ni-MH is S terminal voltage.
 V_s : Ni-Cd=(B+ voltage)-Vf (Vf≈0.3~0.5Vdc)
 Therefore Ni-Cd voltage must consider Vf of protected reverse connection diode.

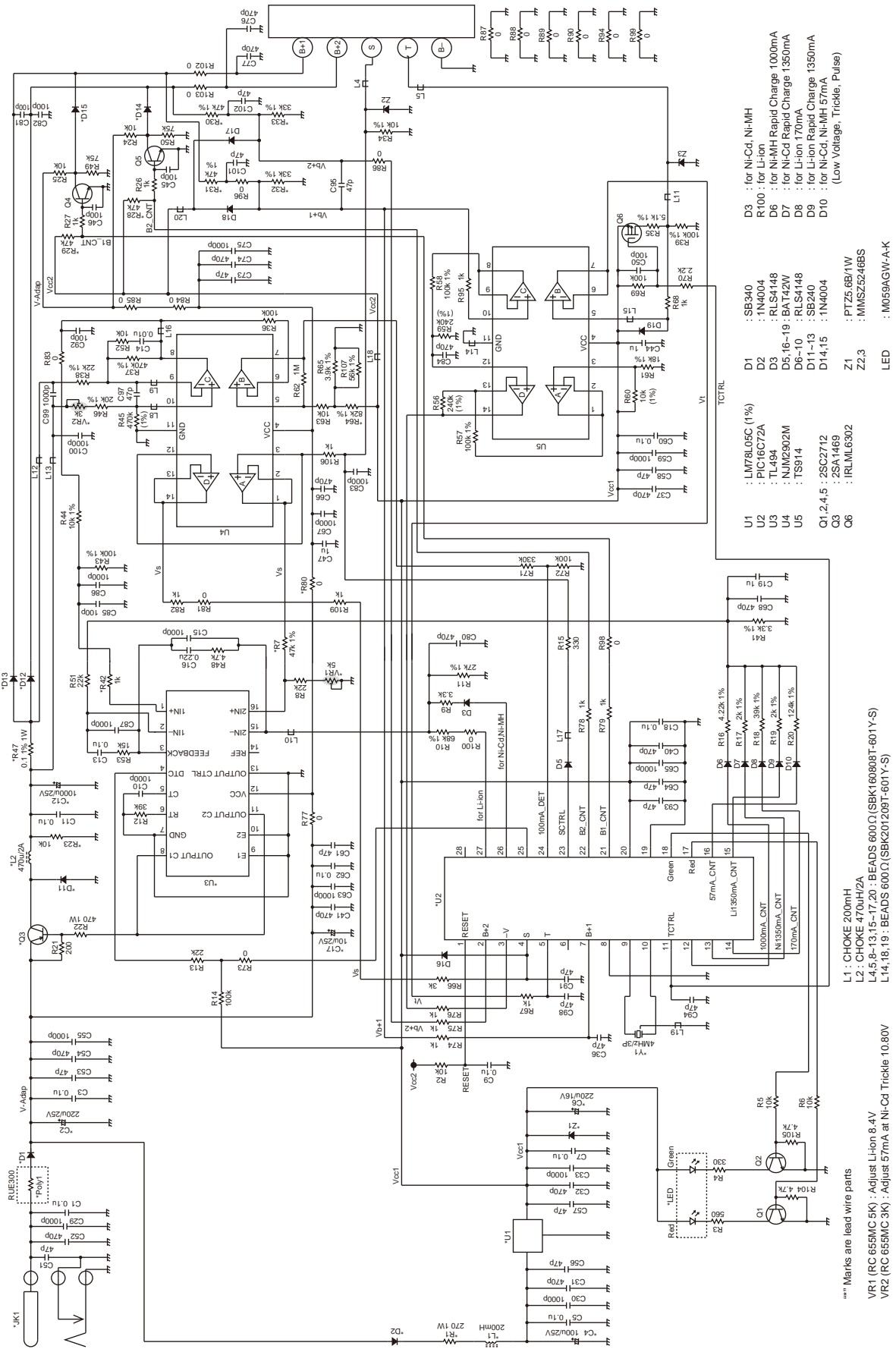
※Terminal open/short circuit, battery voltage and the kind of battery should be kept inspecting when on charge condition and on stand-by temperature.

※Battery Type
 A: KNB-64LEX
 B: KNB-33L/47L/48L/58LEX,PB-45L



KSC-32S

SCHEMATIC DIAGRAM



- D3 : for Ni-Cd, Ni-MH
- R100 : for Li-Ion
- D6 : for Ni-MH Rapid Charge 1500mA
- D7 : for Ni-Cd Rapid Charge 1500mA
- D8 : for Li-Ion 170mA
- D9 : for Li-Ion Rapid Charge 1350mA
- D10 : for Ni-Cd, Ni-MH 57mA
(Low Voltage, Trickle, Pulse)
- U1 : SB340
- U2 : 1N4004
- U3 : RL54148
- U4 : NJM2902M
- U5 : TS914
- Q1,2,4,5 : 2SC2712
- Q3 : 2SA1469
- C6 : IRLML6302
- Z1 : PT25-6B1W
- Z2,3 : MMSZ5248BS
- LED : M059AGW-A-K

- L1 : CHOKE 200mH
- L2 : CHOKE 470uH/2A
- L4,5,8-13,15-17,20 : BEADS 600Ω (SBK160808T-601Y-S)
- L14,16,18,19 : BEADS 600Ω (SBK202091T-601Y-S)

- VR1 (RC 655MC 5K) : Adjust Li-Ion 8.4V
- VR2 (RC 655MC 3K) : Adjust 57mA at Ni-Cd Trickle 10.80V

**** Marks are lead wire parts

KSC-32S

SPECIFICATIONS

AC Voltage	100~240V
Dimensions (W x H x D)	102 x 56.4 x 131.5 mm
Weight (charger only)	Approx. 190g
Approximate Charging Times	
KNB-31A (Ni-Cd: 7.2V)	110 minutes
KNB-32N (Ni-MH: 7.2V)	170 minutes
KNB-54N (Ni-MH: 7.2V)	170 minutes
KNB-33L (Li-ion: 7.4V)	140 minutes
KNB-47L (Li-ion: 7.4V)	140 minutes
KNB-48L (Li-ion: 7.4V)	170 minutes
KNB-58LEX (Li-ion: 7.4V)	150 minutes
KNB-64LEX (Li-ion: 7.4V)	100 minutes
PB-45L (Li-ion: 7.4V)	180 minutes

Kenwood Corporation

2967-3, Ishikawa-machi, Hachioji-shi, Tokyo, 192-8525 Japan

Kenwood U.S.A. Corporation

P.O. BOX 22745, 2201 East Dominguez Street, Long Beach,
CA 90801-5745, U.S.A.

Kenwood Electronics Canada Inc.

6070 Kestrel Road, Mississauga, Ontario, Canada L5T 1S8

Kenwood Electronics Deutschland GmbH

Rembrücker Str. 15, 63150 Heusenstamm, Germany

Kenwood Electronics Belgium N.V.

Leuvensesteenweg 248 J, 1800 Vilvoorde, Belgium

Kenwood Electronics France S.A.

L' Etoile Paris Nord 2, 50 Allée des Impressionnistes,
Bp 58416 Villepinte, 95944 Roissy Ch De Gaulle Cedex

Kenwood Electronics UK Limited

KENWOOD House, Dwight Road, Watford, Herts.,
WD18 9EB United Kingdom

Kenwood Electronics Europe B.V.

Amsterdamseweg 37, 1422 AC Uithoorn, The Netherlands

Kenwood Electronics Italia S.p.A.

Via G. Sirtori, 7/9 20129 Milano, Italy

Kenwood Ibérica, S.A.

Bolivia, 239-08020 Barcelona, Spain

Kenwood Electronics Australia Pty. Ltd.

Talavera Business Park Building A, 4 Talavera Road,
North Ryde NSW 2113 Australia

Kenwood Electronics (Hong Kong) Ltd.

Suite 2504, 25/F, Tower 2, Nina Tower, No. 8 Yeung Uk Road,
Tsuen Wan, New Territories, Hong Kong

Kenwood Electronics Singapore Pte Ltd

1 Ang Mo Kio Street 63, Singapore 569110