

RAPID CHARGER / 快速充电器

# KSC-35S

SERVICE MANUAL / 维修手册

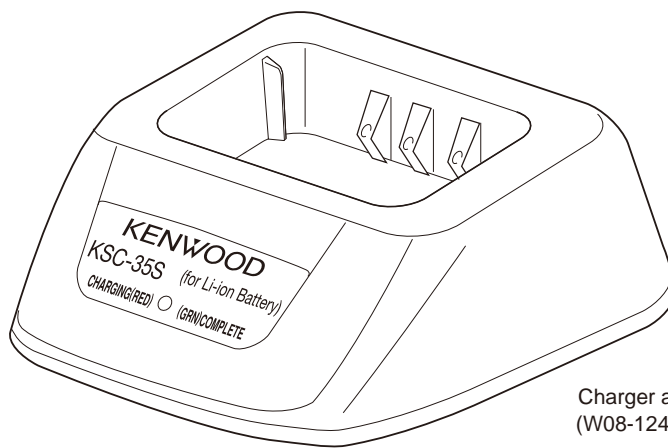
C version / C 版本

# KENWOOD



Kenwood Corporation

© 2011-4 PRINTED IN JAPAN  
B51-8974-00 (Y) PDF

This product (KSC-35S) is different from the KSC-35.  
Do not use the KSC-35 AC adapter.  
该产品 (KSC-35S) 跟 KSC-35 是不一致。  
请勿使用 KSC-35 配的交直流适配器。



Charger assy / 充电器  
(W08-1248-05)

无铅焊接通信产品    
保护环境建伍领先

⚠ 注意：本产品是无铅化焊接产品  
在维修时请使用无铅焊锡  
和相应的焊接工具  
详细事项请访问如下网址了解：  
<http://www.kenwoodhk.com.hk/>

This product complies with the **RoHS** directive for the European market.



This product uses Lead Free solder.

# KSC-35S

## Document Copyrights

Copyright 2011 by Kenwood Corporation. All rights reserved.

No part of this manual may be reproduced, translated, distributed, or transmitted in any form or by any means, electronic, mechanical, photocopying, recording, or otherwise, for any purpose without the prior written permission of Kenwood.

## Disclaimer

While every precaution has been taken in the preparation of this manual, Kenwood assumes no responsibility for errors or omissions. Neither is any liability assumed for damages resulting from the use of the information contained herein. Kenwood reserves the right to make changes to any products herein at any time for improvement purposes.

## 文档版权信息

Kenwood Corporation 拥有版权 2011。保留所有权利。

未经 Kenwood 公司预先书面同意，无论出于何种目的，均不得以任何形式或任何方式包括电子、机械、影印、录音或其他方式复制、翻译、分发或传播本手册的任何部分。

## 免责声明

Kenwood 公司在准备本档时已采取所有必要的预防措施，恕不对错误或疏漏承担任何责任，也不对因使用本文中所含的信息而导致的损害负责。Kenwood 公司保留出于改进的需要而随时对文中的产品信息做出更改的权利。

## CONTENTS / 目录

<b>SPECIFICATIONS.....</b>	<b>3</b>	规格.....	3
<b>PARTS LIST .....</b>	<b>3</b>	零件表.....	3
<b>SCHEMATIC DIAGRAM .....</b>	<b>4</b>	原理图.....	4
<b>PC BOARD.....</b>	<b>5</b>	印刷电路板.....	5
<b>FLOW CHART.....</b>	<b>6</b>	流程图.....	7
<b>BATTERY PACK</b>		电池	
<b>KNB-45L (Li-ion Battery Pack).....</b>	<b>BACK COVER</b>	KNB-45L ( 锂离子电池 ).....	封底
<b>KNB-63L (Li-ion Battery Pack).....</b>	<b>BACK COVER</b>	KNB-63L ( 锂离子电池 ).....	封底

## SPECIFICATIONS / 规格

AC Voltage .....	100~240V
Dimensions (W x H x D) .....	86.3 x 43.2 x 100.0 mm
Weight (charger only) .....	Approx. 95g
Approximate Charging Times	
KNB-45L (Li-ion : 7.4V, 2000mAh) .....	180 minutes
KNB-63L (Li-ion : 7.4V, 1130mAh) .....	180 minutes

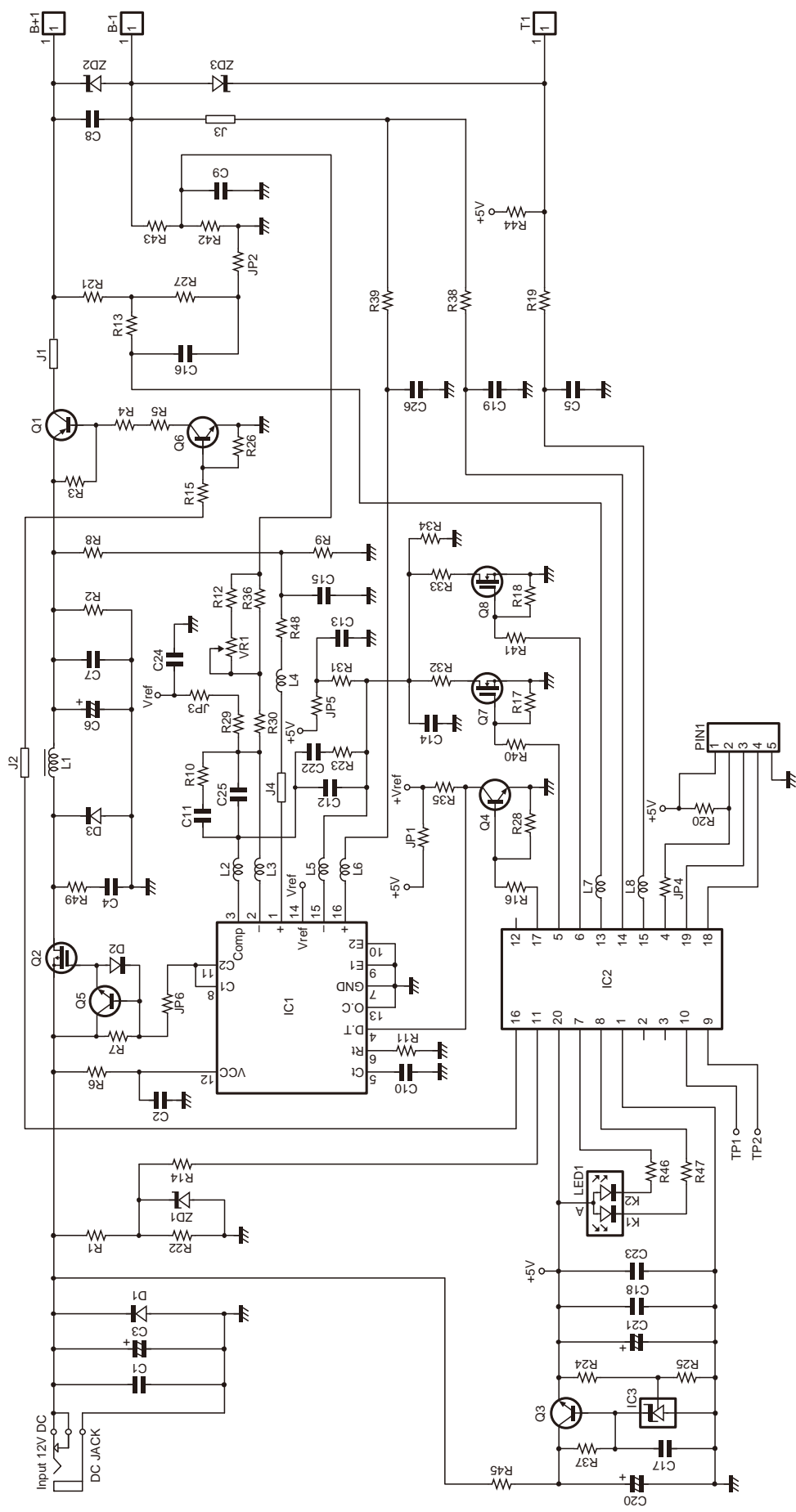
交流电压 .....	100 ~ 240V
尺寸 (宽 × 高 × 长) .....	86.3 x 43.2 x 100.0 mm
重量 (仅充电器时) .....	约 95g
大致充电时间	
KNB-45L (Li-ion : 7.4V, 2000mAh) .....	180 分
KNB-63L (Li-ion : 7.4V, 1130mAh) .....	180 分

## PARTS LIST / 零件表

\* : New Parts

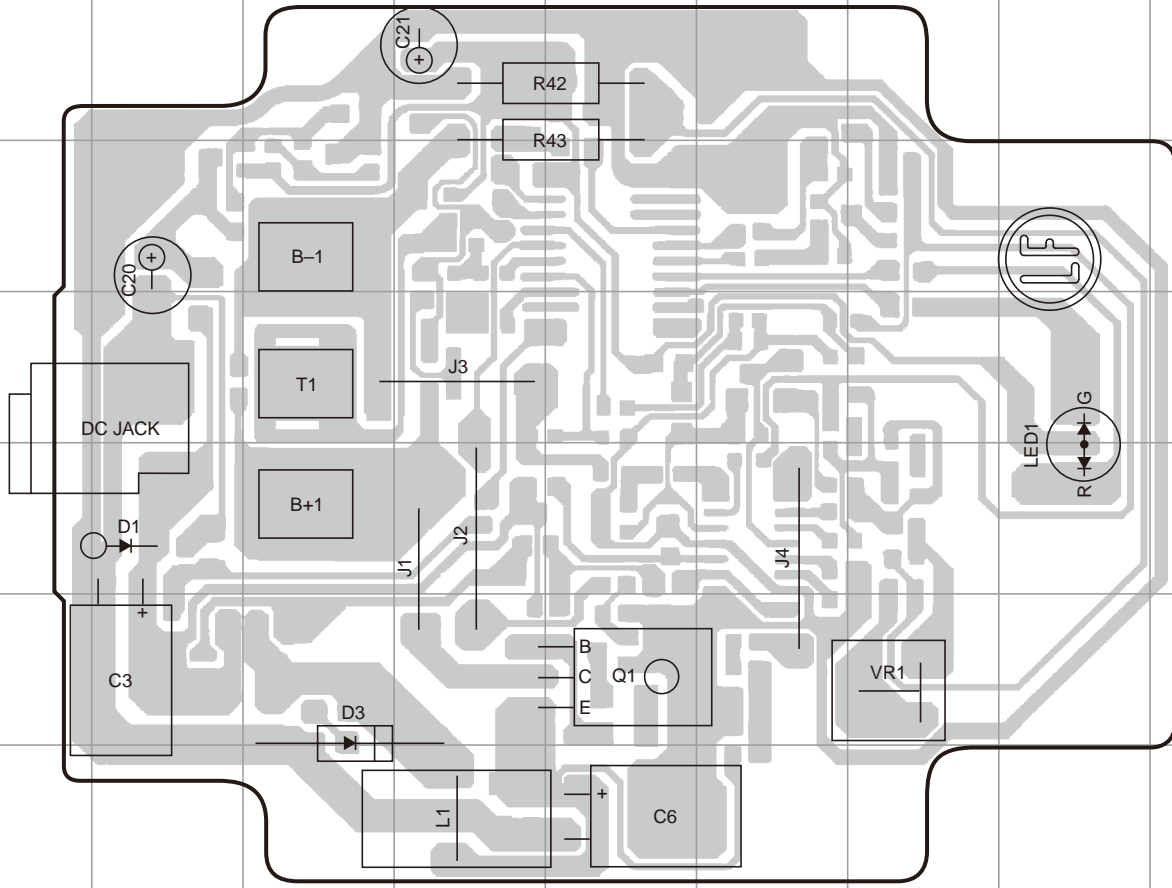
Ref. No.	Address	New parts	Parts No.	Description	Destination
<b>KSC-35S</b>					
		*	W08-1245-05	AC ADAPTER / 交直流适配器	
		*	W08-1248-05	CHARGER ASSY / 充电器	

# KSC-35S SCHEMATIC DIAGRAM / 原理图

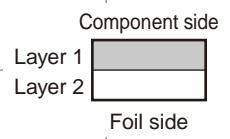


# PC BOARD / 印刷电路板 KSC-35S

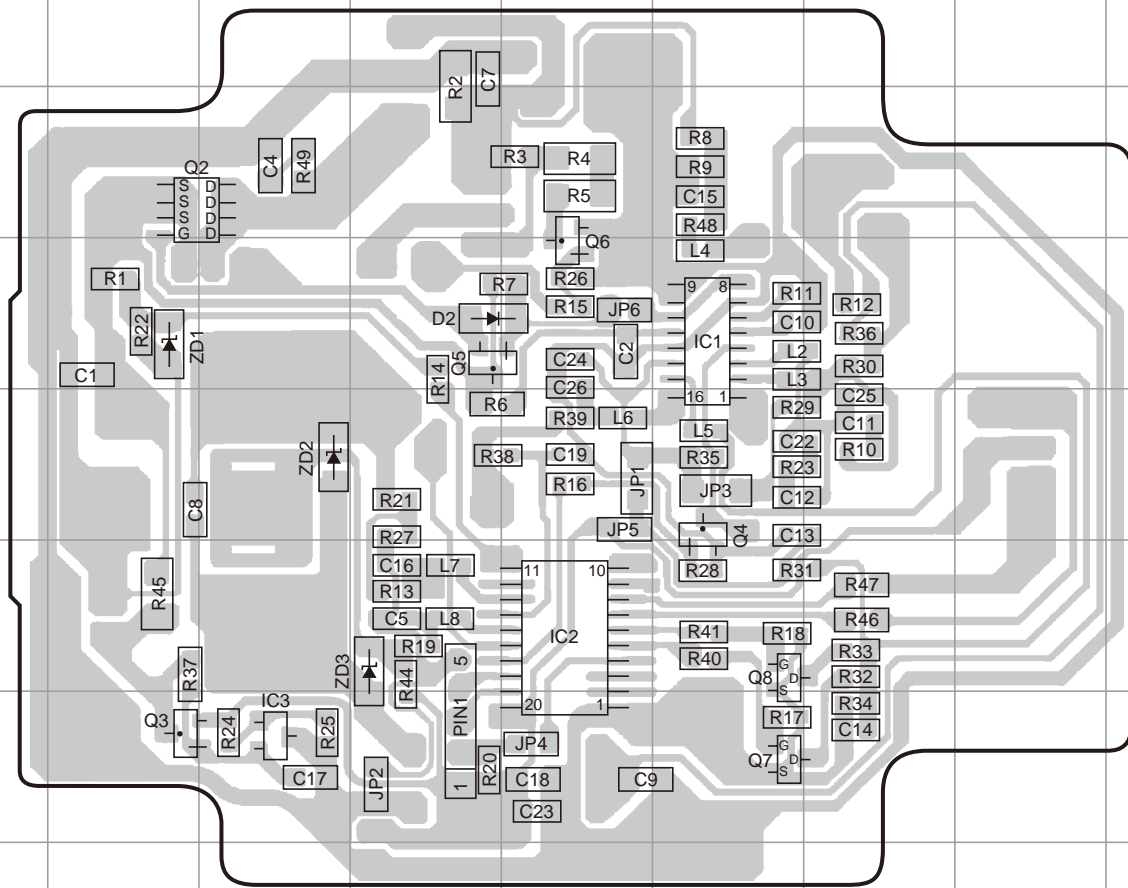
## CHARGER UNIT Component side view / 零件面



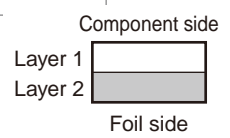
Ref. No.	Address
Q1	6E
D1	5B
D3	6C
LED1	5H



## CHARGER UNIT Foil side view / 焊锡面

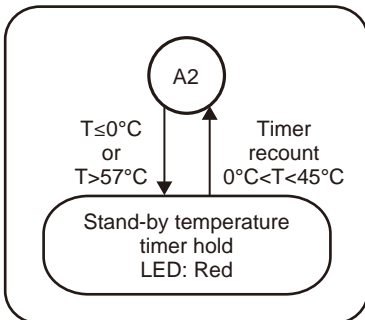
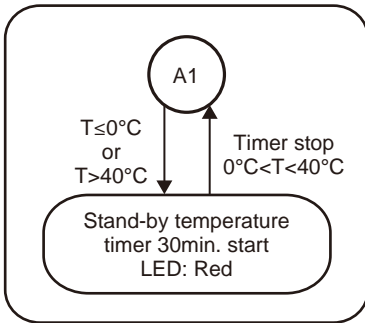
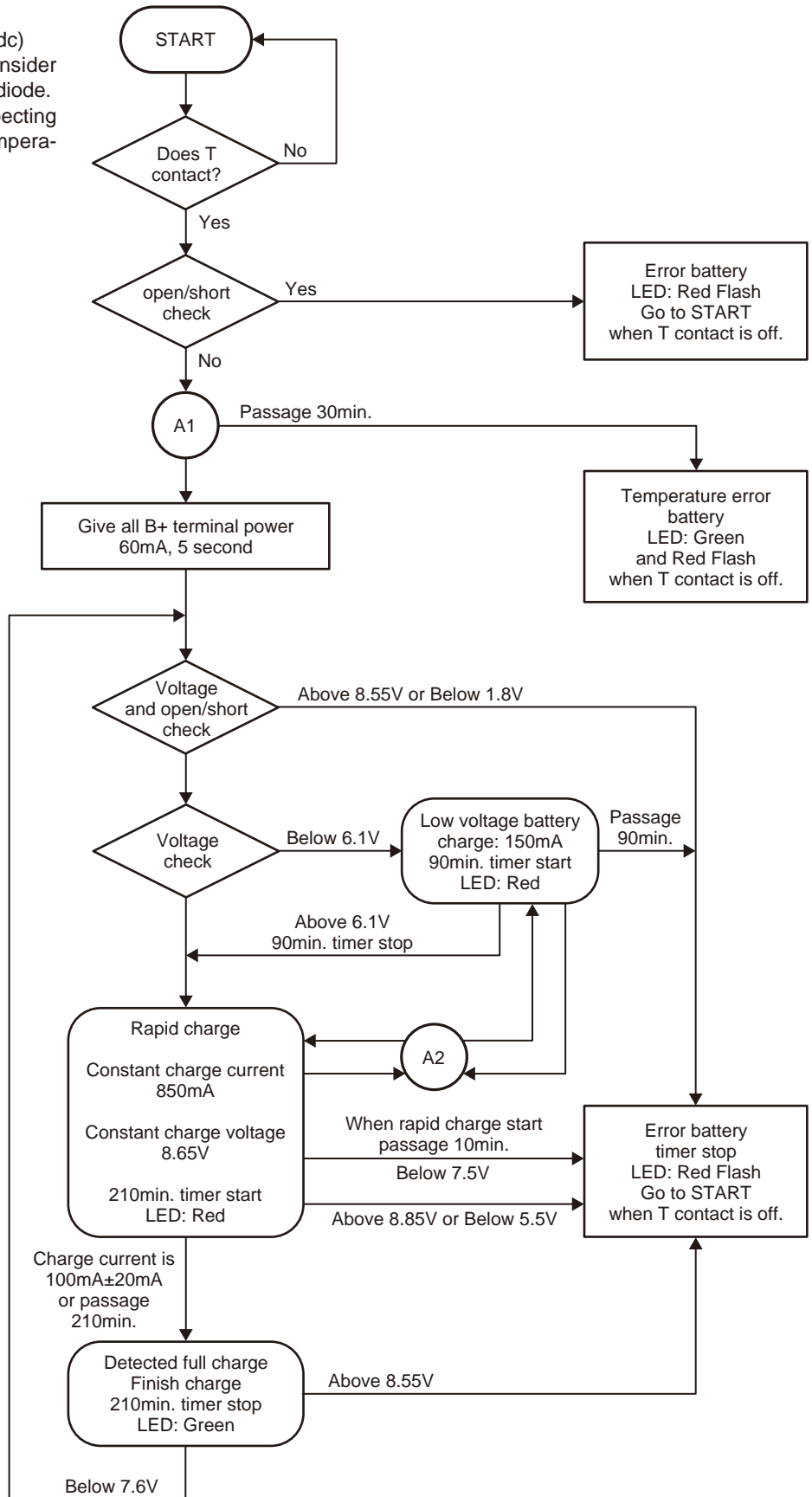


Ref. No.	Address
IC1	10F
IC2	12E
IC3	13C
Q2	9B
Q3	13B
Q4	11F
Q5	10D
Q6	10E
Q7	13F
Q8	12F
D2	10D
ZD1	10B
ZD2	11C
ZD3	12D



## FLOW CHART

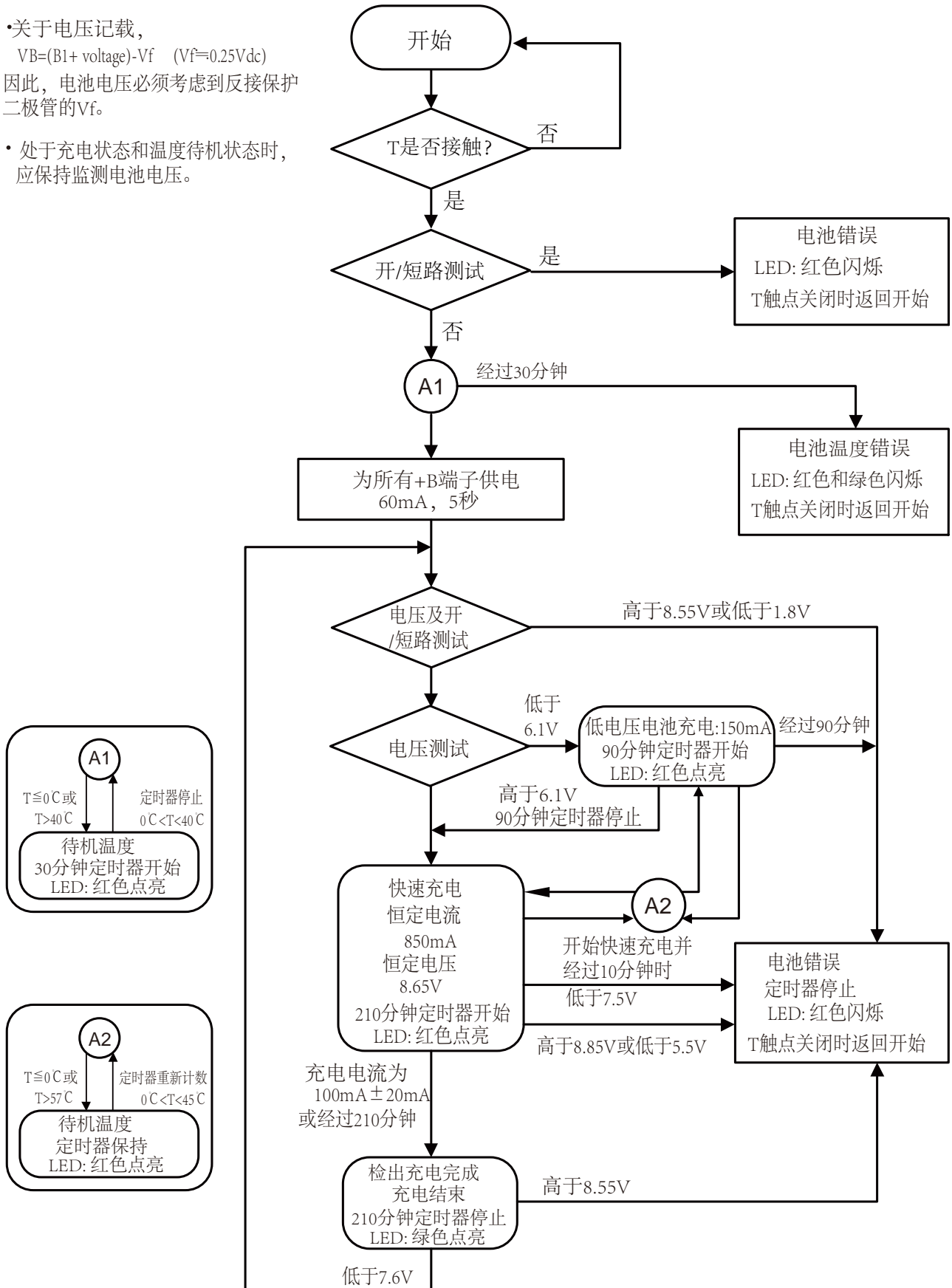
- About voltage write down,  $V_B = (B1 + \text{voltage}) - V_f$  ( $V_f \approx 0.25V_{dc}$ )  
Therefore battery voltage must consider  $V_f$  of protected reverse connection diode.
- Battery voltage should be kept inspecting when charge condition and on temperature stand-by condition.



## 流程图

- 关于电压记载,  

$$VB=(B1+ \text{voltage})-Vf \quad (Vf=0.25Vdc)$$
 因此, 电池电压必须考虑到反接保护二极管的 $Vf$ 。
- 处于充电状态和温度待机状态时, 应保持监测电池电压。



# KSC-35S

## BATTERY PACK / 电池

### **KNB-45L (Li-ion Battery Pack / 锂离子电池)**

■ External View / 外视图



#### ■ Specifications / 规格

Voltage / 电压 ..... 7.4V  
Battery capacity / 电池容量 ..... typ. / 标准 2000mAh

### **KNB-63L (Li-ion Battery Pack / 锂离子电池)**

■ External View / 外视图



#### ■ Specifications / 规格

Voltage / 电压 ..... 7.4V  
Battery capacity / 电池容量 ..... typ. / 标准 1130mAh

## Kenwood Corporation

2967-3, Ishikawa-machi, Hachioji-shi, Tokyo, 192-8525 Japan

### Kenwood U.S.A. Corporation

P.O. BOX 22745, 2201 East Dominguez Street, Long Beach,  
CA 90801-5745, U.S.A.

### Kenwood Electronics Canada Inc.

6070 Kestrel Road, Mississauga, Ontario, Canada L5T 1S8

### Kenwood Electronics Deutschland GmbH

Rembrücker Str. 15, 63150 Heusenstamm, Germany

### Kenwood Electronics Belgium N.V.

Leuvensesteenweg 248 J, 1800 Vilvoorde, Belgium

### Kenwood Electronics France S.A.

L' Etoile Paris Nord 2, 50 Allée des Impressionnistes,  
Bp 58416 Villepinte, 95944 Roissy Ch De Gaulle Cedex

### Kenwood Electronics UK Limited

KENWOOD House, Dwight Road, Watford, Herts.,  
WD18 9EB United Kingdom

### Kenwood Electronics Europe B.V.

Amsterdamseweg 37, 1422 AC Uithoorn, The Netherlands

### Kenwood Electronics Italia S.p.A.

Via G. Sirtori, 7/9 20129 Milano, Italy

### Kenwood Ibérica, S.A.

Bolivia, 239-08020 Barcelona, Spain

### Kenwood Electronics Australia Pty. Ltd.

Talavera Business Park Building A, 4 Talavera Road,  
North Ryde NSW 2113 Australia

### Kenwood Electronics (Hong Kong) Ltd.

Suite 2504, 25/F, Tower 2, Nina Tower, No. 8 Yeung Uk Road,  
Tsuen Wan, New Territories, Hong Kong

### Kenwood Electronics Singapore Pte Ltd

1 Ang Mo Kio Street 63, Singapore 569110