

KENWOOD

Document Copyrights

Copyright 2006 by Kenwood Corporation. All rights reserved.

No part of this manual may be reproduced, translated, distributed, or transmitted in any form or by any means, electronic, mechanical, photocopying, recording, or otherwise, for any purpose without the prior written permission of Kenwood.

Disclaimer

While every precaution has been taken in the preparation of this manual, Kenwood assumes no responsibility for errors or omissions. Neither is any liability assumed for damages resulting from the use of the information contained herein. Kenwood reserves the right to make changes to any products herein at any time for improvement purposes.

RAPID CHARGER

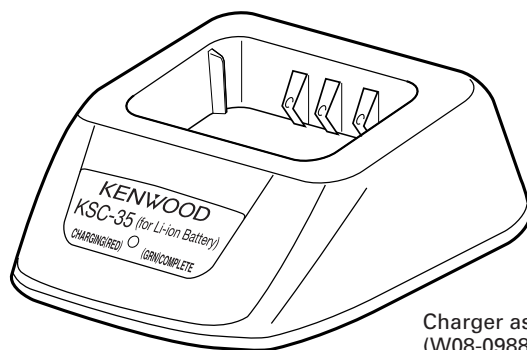
KSC-35

SERVICE MANUAL

KENWOOD

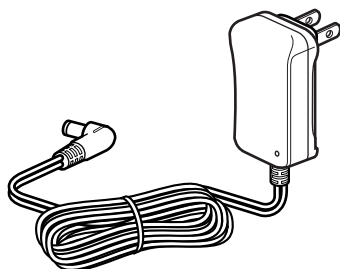
Kenwood Corporation

© 2006-7 PRINTED IN JAPAN
B51-8760-10 (N) PDF

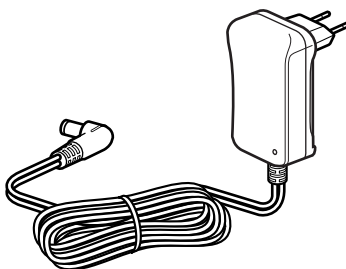


Charger assy
(W08-0988-05)

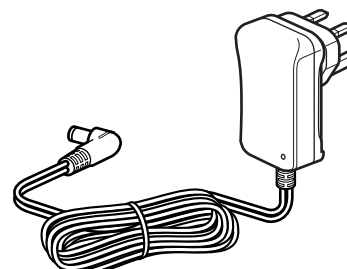
AC adapter
(W08-0989-05) : K



AC adapter
(W08-0992-05) : E



AC adapter
(W08-0993-05) : T



CONTENTS

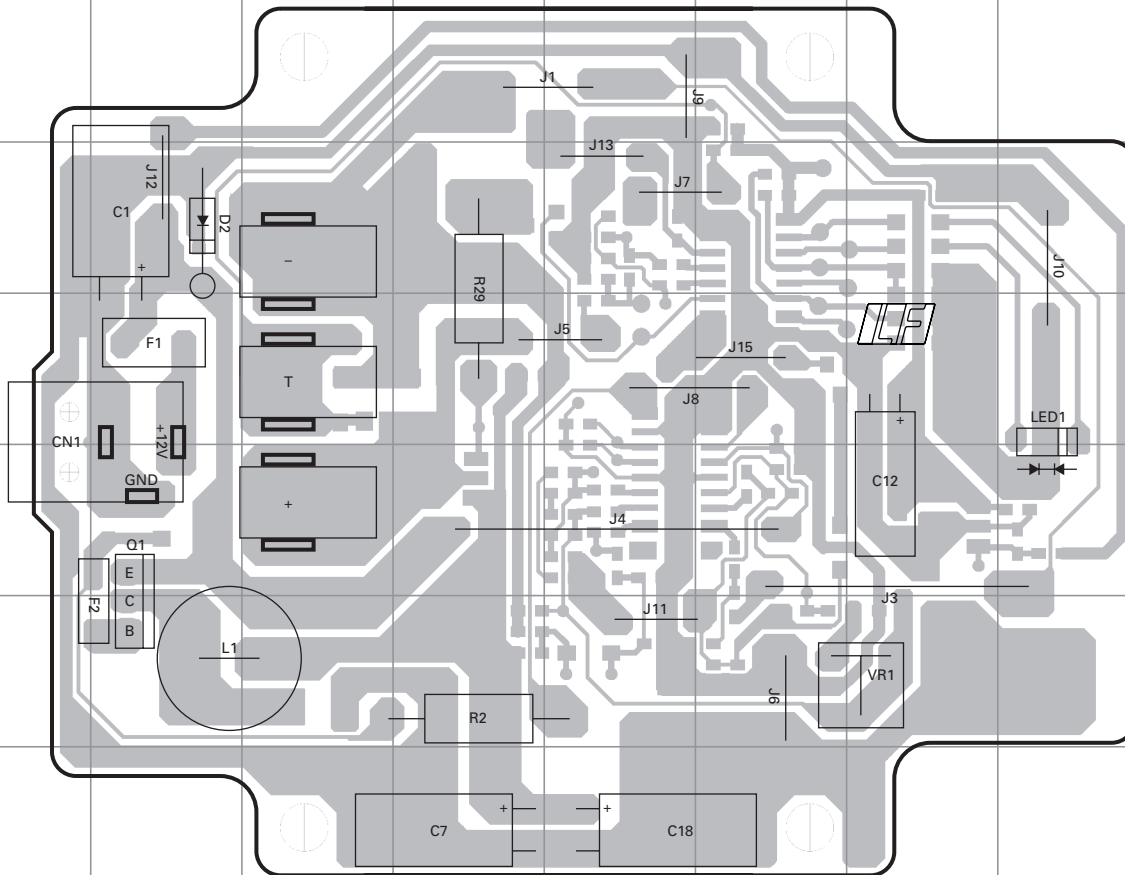
PC BOARD	2
SCHEMATIC DIAGRAM	3
FLOW CHART	4
PARTS LIST	5
KNB-45L (Li-ion Battery Pack)	5
SPECIFICATIONS	BACK COVER



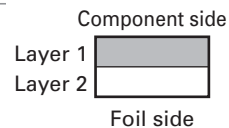
This product uses Lead Free solder.

KSC-35 PC BOARD

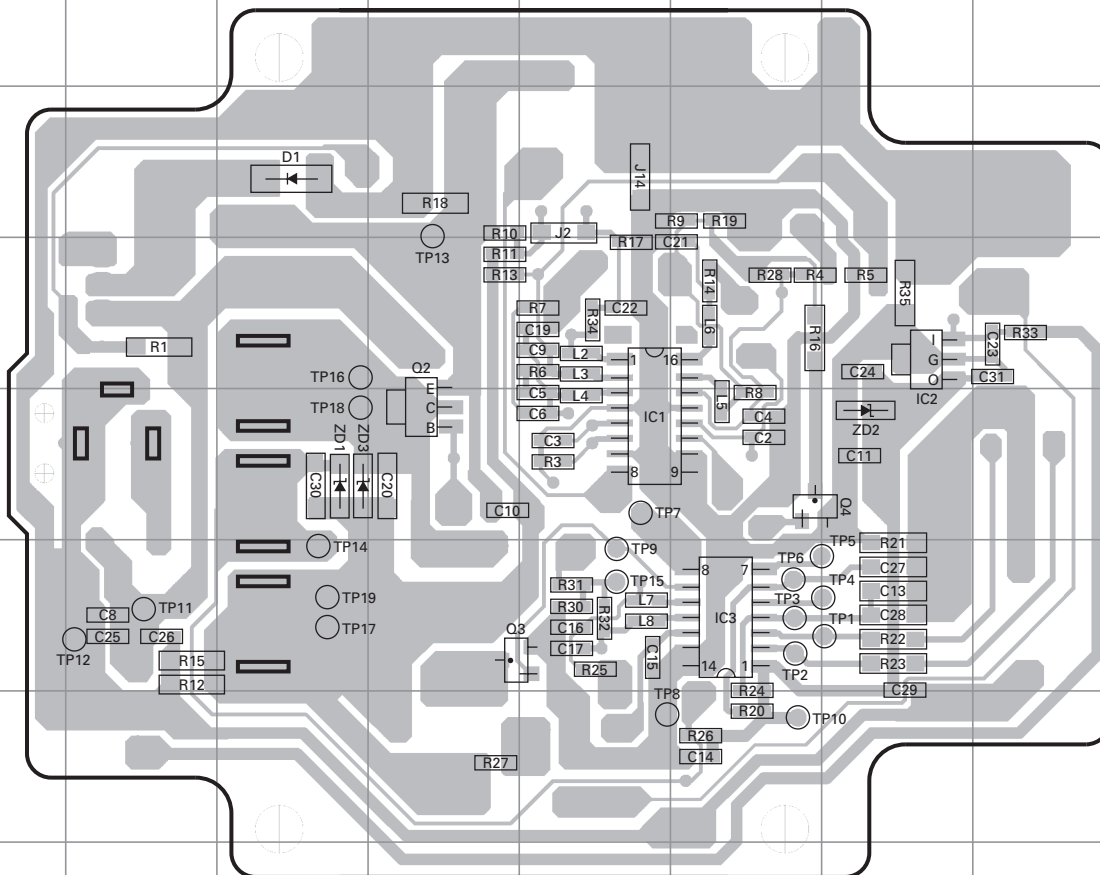
CHARGER UNIT (W02-3713-08) Component side view



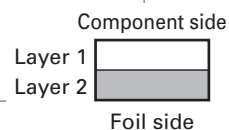
Ref. No.	Address
Q1	5B
D2	3B
LED1	4H



CHARGER UNIT (W02-3713-08) Foil side view

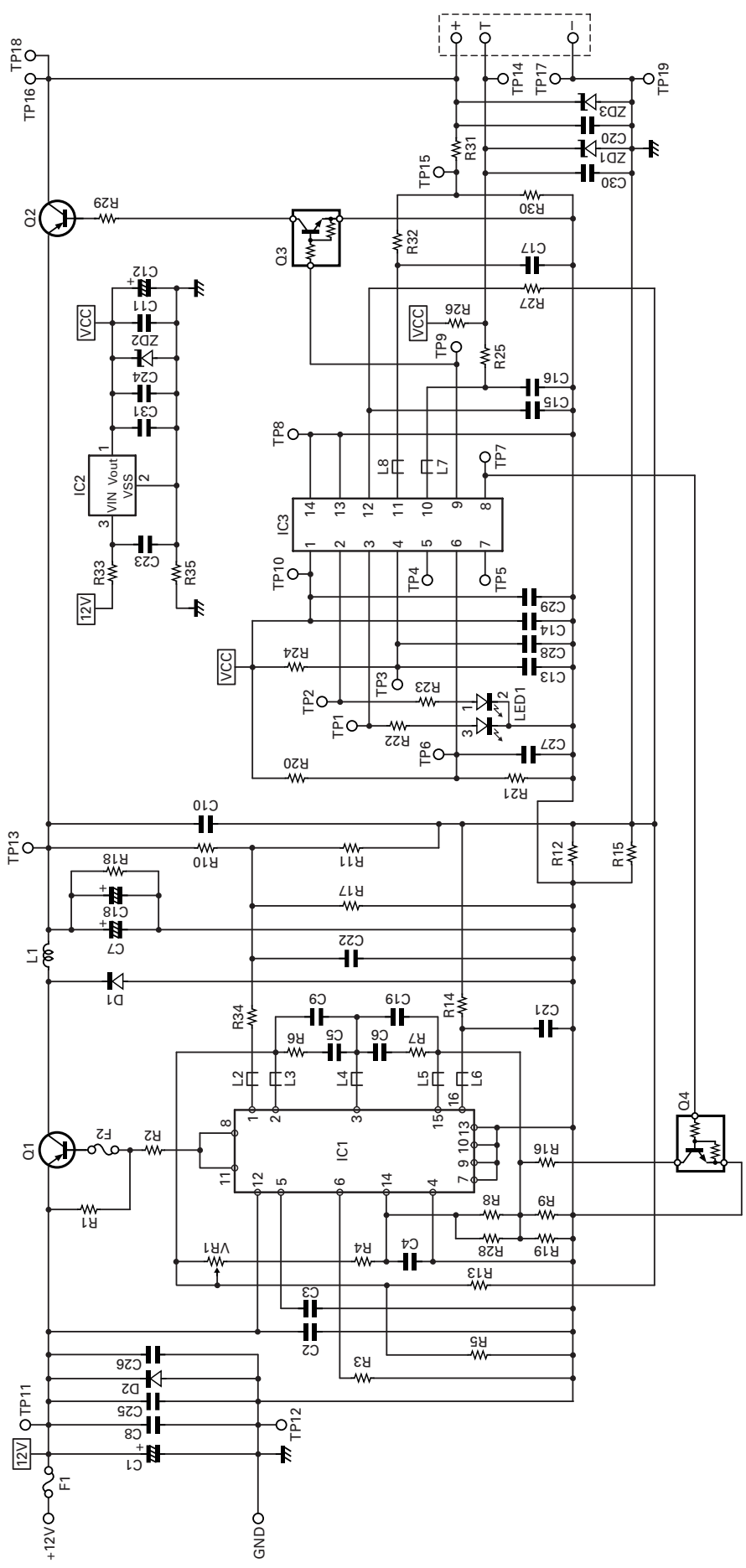


Ref. No.	Address
IC1	11E
IC2	10G
IC3	12F
Q2	11D
Q3	12D
Q4	11F
D1	9C
ZD1	11C
ZD2	11G
ZD3	11C

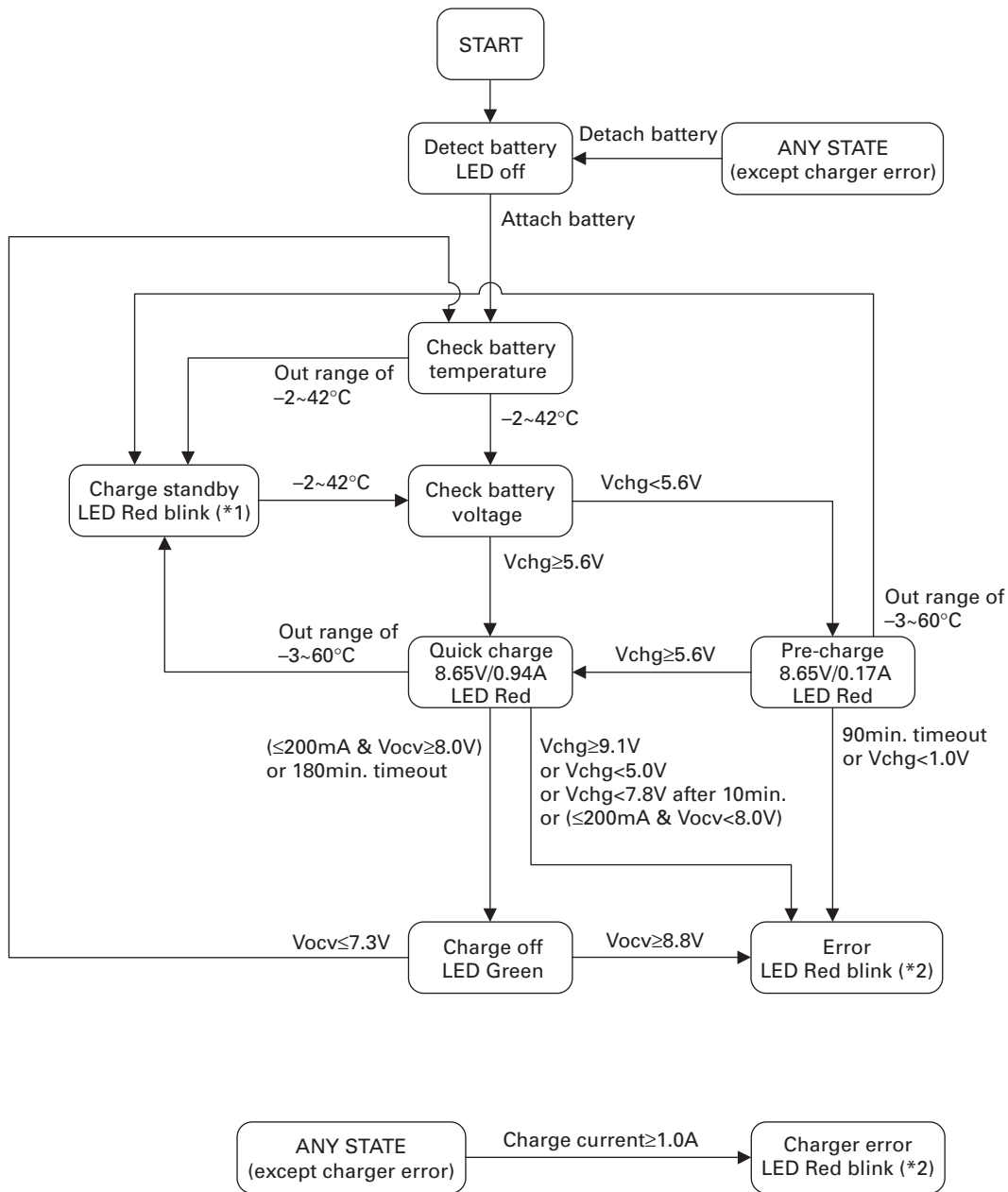


SCHEMATIC DIAGRAM KSC-35

1
2
3
4
5
6
7



FLOW CHART



* Charge voltage is 8.65V. It is higher than normally charge voltage 8.4V. 0.25V is offset voltage as the diode V_f which is in the battery pack.

LED blink pattern
*1 : 0.625Hz flash
*2 : 2.5Hz flash

V_{chg} : battery voltage at charging
 V_{ocv} : battery voltage at non-charging

PARTS LIST / KNB-45L (Li-ion Battery Pack)

Parts List

* New Parts.

Ref. No.	Address	New parts	Parts No.	Description	Destination
KSC-35					
		*	W08-0988-05	CHARGER ASSY	
		*	W08-0989-05	AC ADAPTER	K
		*	W08-0992-05	AC ADAPTER	E
		*	W08-0993-05	AC ADAPTER	T

KNB-45L External View



KNB-45L Specifications

Voltage 7.4V
 Battery capacity..... 2000mAh

KSC-35

SPECIFICATIONS

AC Voltage	100~240V
Dimensions (W x H x D)	86.3 x 43.7 x 100.0 mm
Weight (charger only)	Approx. 90g
Approximate Charging Times	
KNB-45L (Li-ion : 7.4V, 2000mAh)	180 minutes

Kenwood Corporation

2967-3, Ishikawa-machi, Hachioji-shi, Tokyo, 192-8525 Japan

Kenwood U.S.A. Corporation

P.O. BOX 22745, 2201 East Dominguez Street, Long Beach,
CA 90801-5745, U.S.A.

Kenwood Electronics Canada Inc.

6070 Kestrel Road, Mississauga, Ontario, Canada L5T 1S8

Kenwood Electronics Deutschland GmbH

Rembrücker Str. 15, 63150 Heusenstamm, Germany

Kenwood Electronics Belgium N.V.

Leuvensesteenweg 248 J, 1800 Vilvoorde, Belgium

Kenwood Electronics France S.A.

L'Etoile Paris Nord 2, 50 Allée des Impressionnistes,
Bp 58416 Villepinte, 95944 Roissy Ch De Gaulle Cedex

Kenwood Electronics UK Limited

KENWOOD House, Dwight Road, Watford, Herts.,
WD18 9EB United Kingdom

Kenwood Electronics Europe B.V.

Amsterdamseweg 37, 1422 AC Uithoorn, The Netherlands

Kenwood Electronics Italia S.p.A.

Via G. Sirtori, 7/9 20129 Milano, Italy

Kenwood Ibérica, S.A.

Bolivia, 239-08020 Barcelona, Spain

Kenwood Electronics Australia Pty. Ltd.

(A.C.N. 001 499 074)
16 Giffnock Avenue, Centrecourt Estate, North Ryde, N.S.W. 2113 Australia

Kenwood Electronics (Hong Kong) Ltd.

Unit 3712-3724, Level 37, Tower one Metroplaza, 223 Hing Fong Road,
Kwai Fong, N.T., Hong Kong

Kenwood Electronics Singapore Pte Ltd

1 Ang Mo Kio Street 63, Singapore 569110

