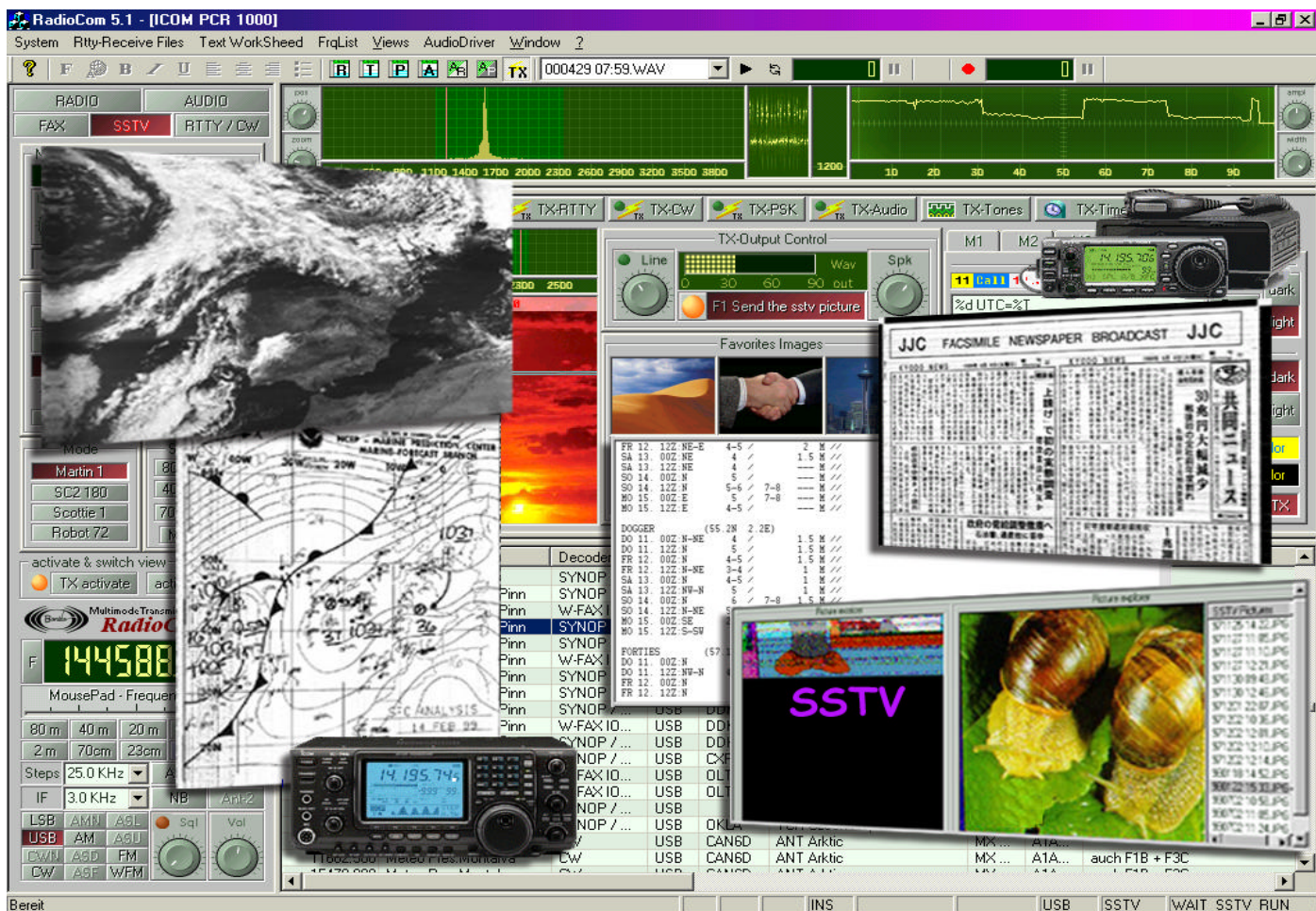


RadioCom 5.2 ©

DSP-FILTER-ANALYZER, CAT and Decoder/Encoder Program
! with TX option !

NEW! For Windows '95/'98/'ME/'2000/XP and NT NEW!

DSP-Filter, CAT and decoding/ encoding with your computer.
RTTY-, Synop-, CW-, PSK31-, FAX-, SSTV-Decoder/ Encoder
3D Scanner, Equalizer, SatTracking, AudioAnalyzer and Dual Scopes Time-,
Frequency-Management and Frequency-Analyzer
RadioControl for more than 80 Receivers and Transceivers
LEVEL CONVERTER INCLUDED!



www.bonito.net

RadioCom® 5 incl. DSP-Filter-Analyzer

WHAT DOES THIS PROGRAM DO FOR YOU?

It decodes (and encodes) digital and analog radio signals. It also improves the quality of the audio sound, which in the past was only possible with an expensive DSP-Receiver. The signal goes directly into your computer via the sound card for processing, you can also control your radio via the COM-port and **all** of this without any extra hardware. The received signals are processed and filtered and played in the computer loudspeakers.

RadioCom comes with: Filter-Analyzer, Time Spectroscopes, DualScope, Audio-Recorder, RTTY, CW, FAX, SSTV, PSK (PSK31, Q- and B-PSK), Synop-Decoder, 3D Scanner and SatTracking. This means you have all you need in **one** program!

Up to now the requirements for SSB-receiver & decoders to process radio messages was extremely high and expensive. With today's normal multimedia-PC a complete new concept could be developed so that the expensive extra filters are replaced, and the operating comfort is improved. Expensive screens, scopes and tools are now generated on your computer screen.

It's hard work to understand and program for Digital-Sound-Processing, Frequency-Analyzing and Decoding. What in the past was very expensive is now easily realized on your computer. Completely hissed signals from low cost receivers are so improved by the effect of the integrated **equalizer**, it is very easy to hear and to see the difference on your display.

With **RadioCom 5** we have created a desktop specially fit to your needs. The **Live-WorkViewer**, for example, facilitates you to receive a weather fax, while you are modifying another one, without interrupting the incoming fax. All desktop elements can be modified to your own liking. The **Dual-Scope** improves the analysis from cause and effect of the signal quality. **SpectrumAnalyzer**, **TimeSpectroScope** and **X/Y-Scope** are helpful tools for that.

With the modifiable database of the **Frequency-Manager** it is possible to save all the complex data of radio stations, and to recall them on demand. The database also holds decoder-data for the SynopDecoder and Keplerian data (for sat-receiving). Now you can plan with the **Time-Manager** different tasks, so nothing will be missed.

The **Frq-Channel-Scanner-Function** shows you signal strength, Audio-events and **3D Diagrams**. The event-saving makes later analyzing of events with frequency and time possible. And with the **Audio-Recorder** you can record and replay signals for later analyzing or decoding.

SatFax can receive live and synchronous without the normal Doppler effects and display with highest resolution. The included **SatTrack-Program** allows you to see when and where you can find the satellites on the world map.

The **AudioController** controls all audio functions, drivers and mixers, also the special AudioSquelch and the DSP-filter with the **FFT-Equalizer** (Fast-Fourier-Transformation). This allows to set several Notch filters in one band filter or to create a filter curve with desired form and variable slope with a **2 Hz** resolution. You can simply draw a curve character with the mouse.

Technical Data:

AudioController

Controls all Audio functions, drivers and mixers. Audio-Squelch, Filter- and Equalizer- Functions controls, etc.

RTTY-Decoder

RTTY, SITOR, B-PSK, Q-PSK, (PSK31), incl. NAVTEX and SYNOP-Decoding. All parameters totally variable.

FAX-Decoder

AM / FM Fax, all IOC's and RPM, Fax-Special-Filter, HAM-Fax, Weather-Fax and SAT-Fax direct.

SSTV-Decoder

All Mode. Special filters, Color up to 32 Bit, all picture formats and parameter totally variable.

CW-Decoder

All parameter totally variable.

Audio-Recorder

Record and replay from signals, incl. Functions for later analyzing and decoding.

DSP Filter / Equalizer

Filter-/ equalizer functions up to 2 Hz resolution with variable slope. All filter combinations possible..

Channel-Scanner, Frequency-Scanner

3D-displays from signal strength, audio-events or time diagrams. event-saving for later analyzing.

Time-Manager

Organize reception from text and picture from the desired time

SatTracking

Displays all Satellites on a word map, inclusive all Keplerian data and decoder types, also with a time schedule.

System requirements

SSB-Receiver or Transceiver (remote controlled if possible)

RadioCom 5 can be combined with almost all makes of receiver. For example, those produced by Sony, Panasonic, Grundig, and Siemens, and any others with SSB reception. However, these cannot use timer-operated remote/radio control. We recommend controllable Radios, such as those made by Yaesu, ICOM, Kenwood, JRC, AOR, and SKANTI. In the delivered switchbox is already the control-electronic inside to remote control for more than 90 receivers and transceivers.

You don't need a separate level converter!

It already comes with the software package for most radios. This reduces the cost to a minimum to upgrade to the digital age.

Computer:

The computer must have an Intel Pentium/Celeron© processor with at least 200 MHz, 64 MB RAM, a bi-directional sound card with a LINE-IN port, a spare COM port, and either Windows© 95/98/ME/2000/XP or NT4.0/SR3 or higher installed, as well as a graphics card with 1024x768 16 bit color resolution.



Visit Bonito's Website at:

www.bonito.net

www.computer-int.com

COMPUTER INTERNATIONAL
ST. JOHNS, MI 48879 U.S.A.
radiocom@computer-int.com
Phone: 989-224-9080

Technical Data can be changed without notice. 10/2006