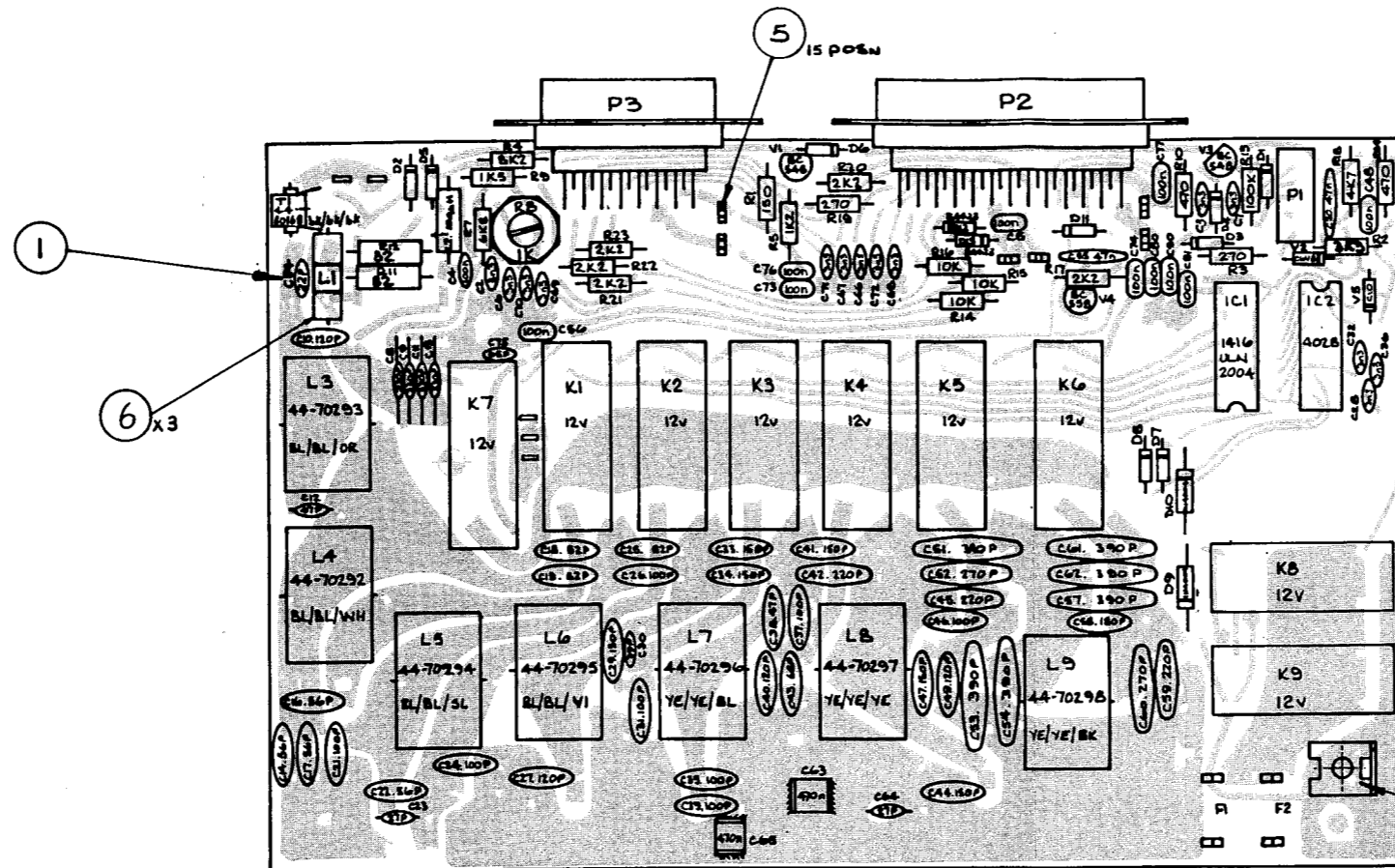
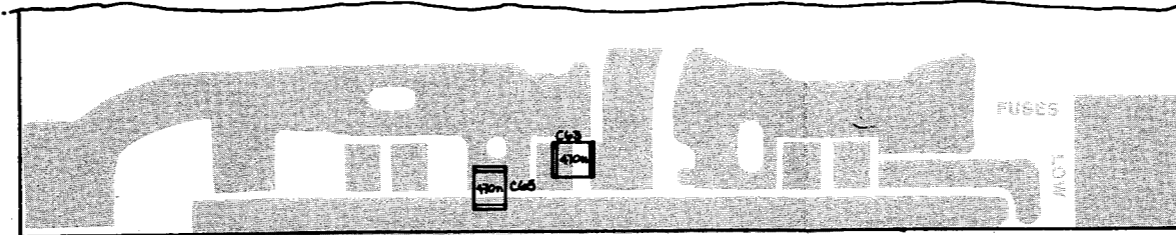


THIRD ANGLE PROJECTION DO NOT SCALE.



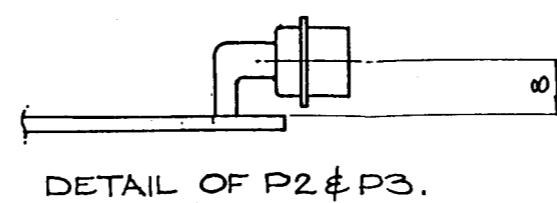
- NOTES:-
1. ADHERE ALL INDUCTORS AND TRANSFORMER T1 TO P.C.B. SURFACE WITH R.T.V. COMPOUND PRIOR TO SOLDERING.
 2. FOR SOLDERING CHIP CAPACITORS USE CAPALLOY, 62% Sn, 36% Pb, 2% Ag.
 3. ALL DIODES IN 914A UNLESS OTHERWISE STATED.
 4. TIN TOPSIDE OF P.C.B. AROUND FIXING HOLES.
 5. MAXIMUM COMPONENT LEAD PROTRUSION TO BE 1mm.

07-00 B17 ISS 5



VIEW SHOWING POSITION OF CHIP CAPACITORS.

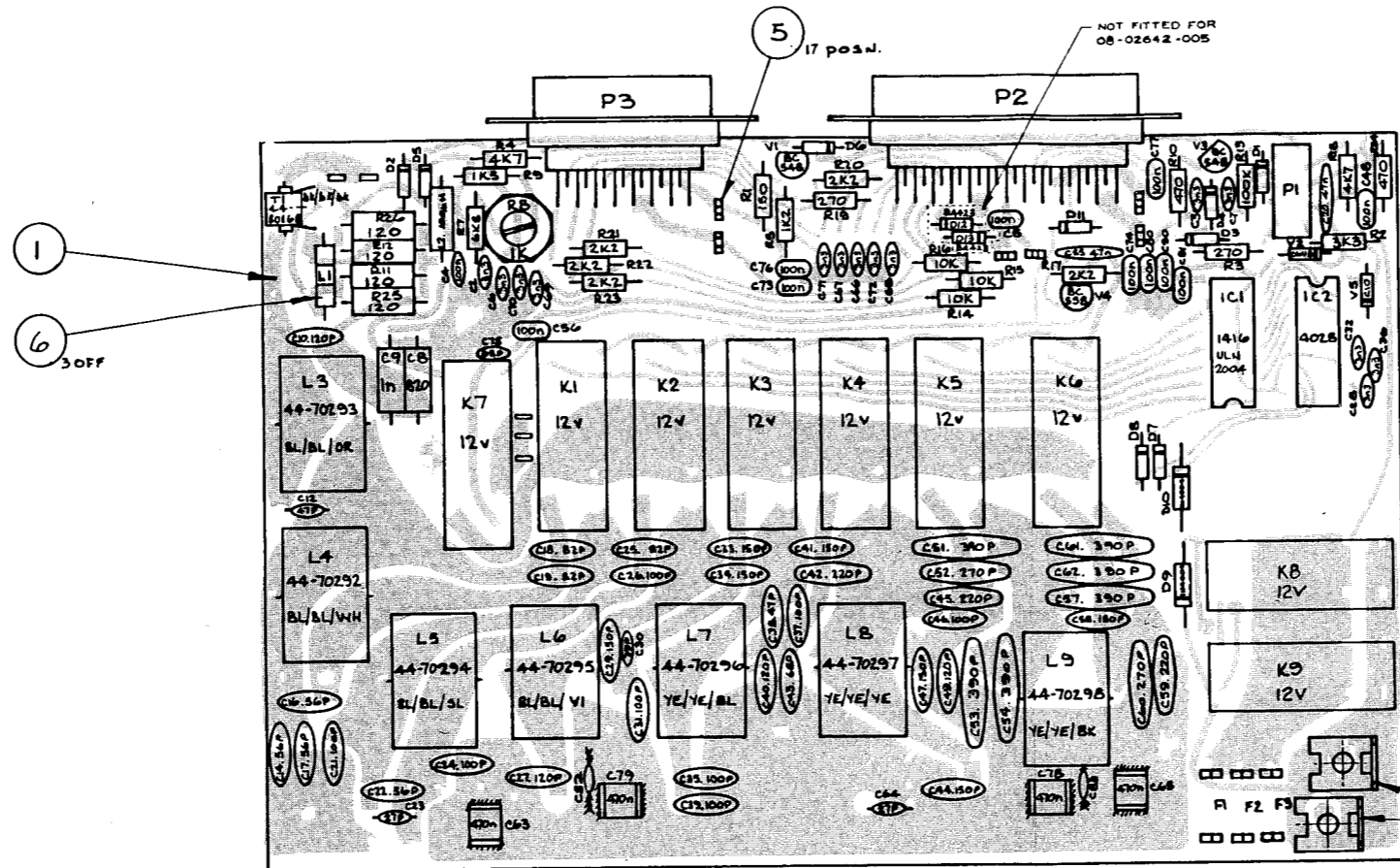
PART No.	DESCRIPTION	DETAIL.
08-02542-001	4401~150w.12v.	SEE SHEET 1.
08-02542-002	4402~200w.24v.	AS THIS SHEET
08-02542-004	4404~400w.24v.	SEE SHEET 3.
08-02542-005	4404~400w.24v.	SEE SHEET 3



CODAN PTY. LTD.			FILTER P.C.B. ASSY.		
GEN TOL _____					
SCALE 2x FULL SIZE.					
DRN JLLW	CHKD MAF	APPD JLU	A1 08-02542		SHT 2 OF 3
DATE	DATE 21-3-84	DATE 20-3-84	1	2	3

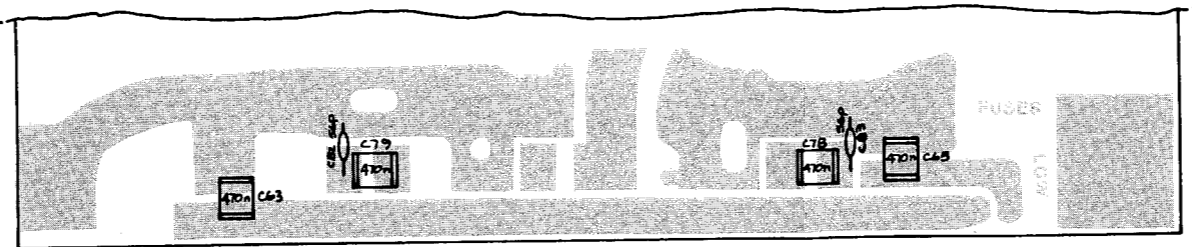
2. STAKE CHANGE CR 20176
 L1 CONSISTED OF 1 BEAD.
 CR 20176B
 FIB2 DELETED CR 20045
 CR 20035
 3. NOTE 5 ADDED CR 20186
 17/11/85
 ISSUE 5
 K8 & K9 WERE 24V
 CR 22091
 22-5-91
 ISSUE 6
 CR 24213
 Q05 VARIANT ADDED
 M/T 11-3-95

THIRD ANGLE PROJECTION DO NOT SCALE.



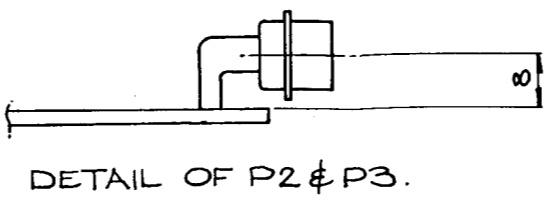
- NOTES:-
1. ADHERE ALL INDUCTORS AND TRANSFORMER T1 TO P.C.B. SURFACE WITH R.T.V. COMPOUND PRIOR TO SOLDERING.
 2. FOR SOLDERING CHIP CAPACITORS USE CAPALLOY, 62% Sn, 36% Pb, 2% Ag.
 3. ALL DIODES IN 914A UNLESS OTHERWISE STATED.
 4. TIN TOPSIDE OF P.C.B. AROUND FIXING HOLES.
 5. MAXIMUM COMPONENT LEAD PROTRUSION TO BE 1mm.

07-00B17 ISS. 5



VIEW SHOWING POSITION OF CHIP CAPACITORS.

PART No.	DESCRIPTION	DETAIL
08-02542-001	4401~150w.12v.	SEE SHEET 1.
08-02542-002	4402~200w.24v.	SEE SHEET 2.
08-02542-004	4404~400w.24v.	AS THIS SHEET
08-02542-005	4404~400w.24v.	AS THIS SHEET



CODAN PTY. LTD.			FILTER P.C.B. ASSY.		
GEN. TOL.					
SCALE 2x FULL SIZE.					
DRN J.L.W.	CHKD [Signature]	APPD [Signature]	A1 08-02542.		SHT 3 OF 3
DATE	DATE 21-2-88	DATE 20-3-88	12	8	4

2 STAKE CHANGE
C/A 30176
COLOUR CODE
ADDED TO P1.
C1 DELETED.
P1, 2 & 8 DELETED
C/R 20043
3. NOTE 5 ADDED
C/A 20486
ISSUE 4
D12, D13 WEB INTAK
C/A 20195
14/4/86
ISSUE 5
DELETED K10 & K11
K8 & K9 WERE 24V
C/R 22601
22/5/91
ISSUE 6
C/R 24213
005 VARIANT
ADDED
A/M 23-2-95