

SIDE 1  
SURFACE MOUNT COMPONENTS ONLY

- NOTES:-  
 1. ALL DIODES ARE BAS16.  
 2. ALL TRANSISTORS ARE BCX20.

PCB 07-01606-08  
 ASSY P/No. 08-04666-001

CHANGE REQUEST

ISSUE B  
 C30-C36 ADDED  
 PCB WAS ISS 2  
 C/R 23377  
 NJA 05-08-92

ISSUE 2  
 R33 WAS 390k.  
 R36 WAS 10k.  
 C/R 24093  
 CM 11-01-95

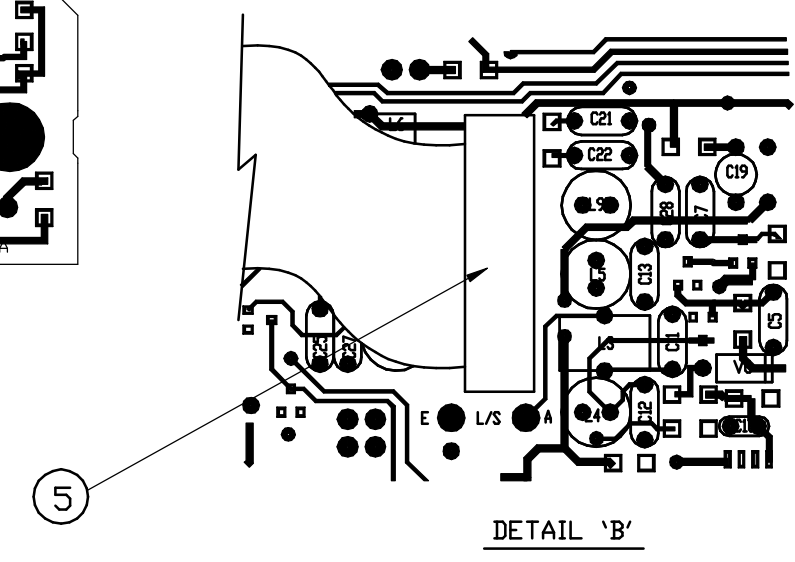
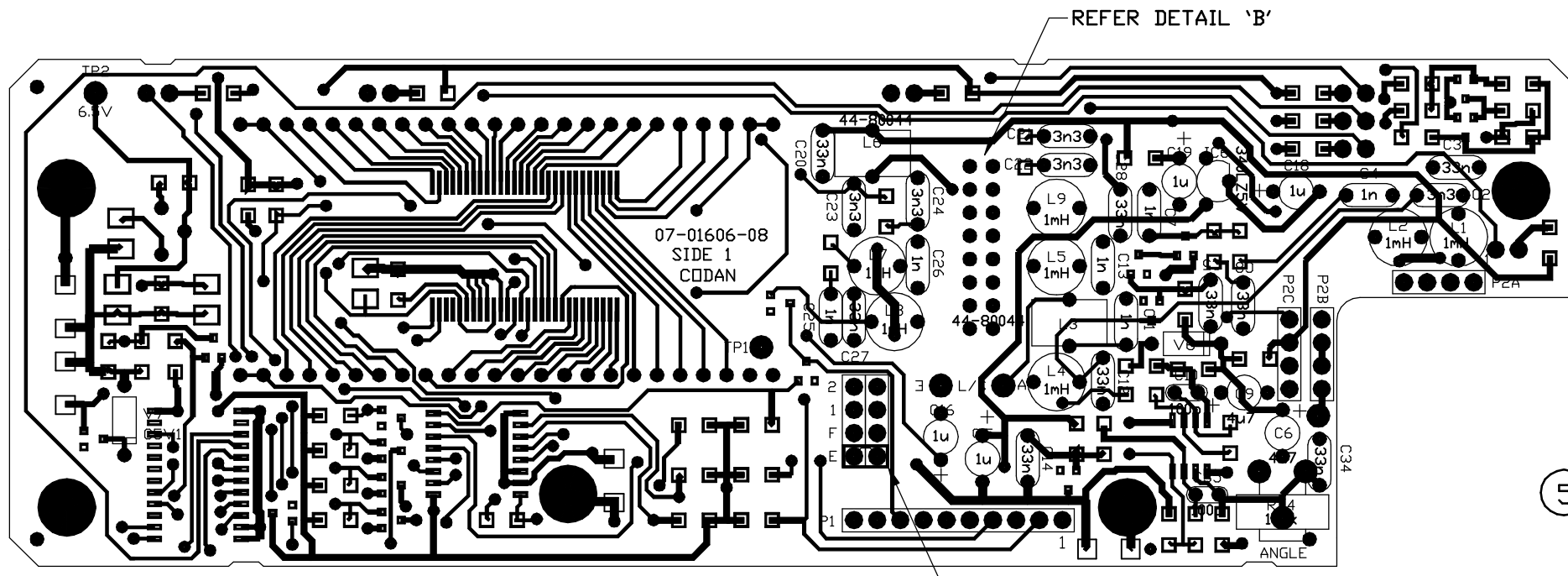
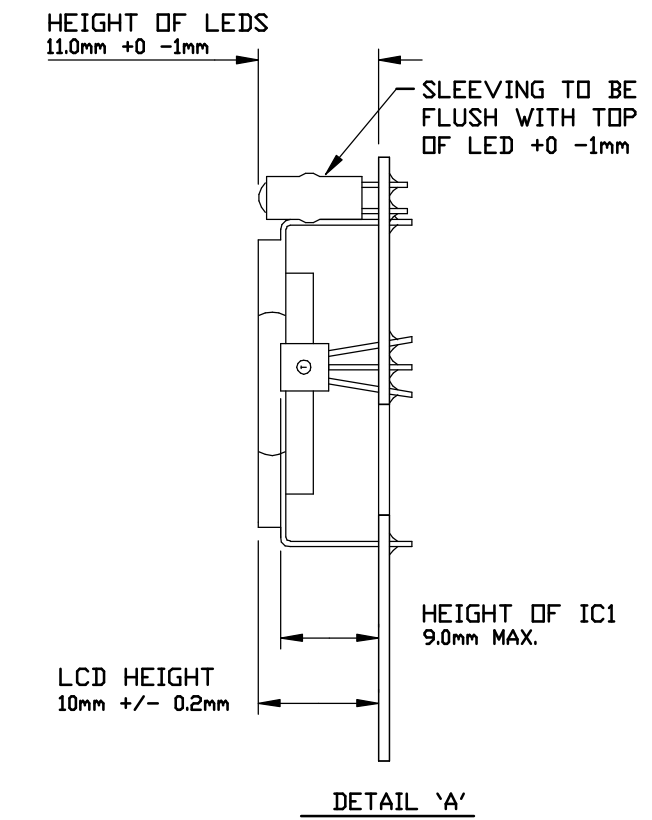
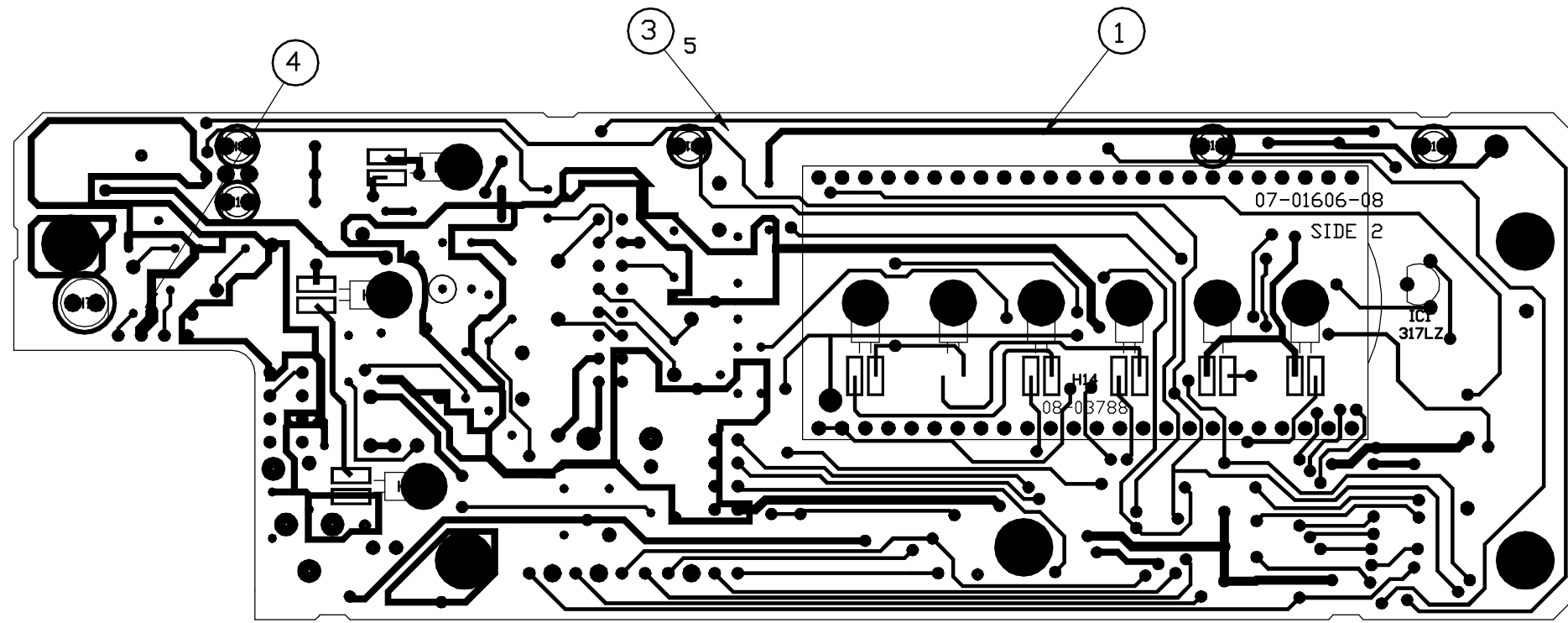
ISSUE 3  
 PCB WAS ISS 5.  
 C/R 24227  
 CM 14-06-95

ISSUE 4  
 REFER SHEET 2.  
 C/R 24515  
 CM 27-3-96

ISSUE 5  
 C/R 24904  
 REFER SHEET 2.

FILE No.  
 08\04666\_5.DWG

			SCALE 2:1	© CODAN PTY LTD, A.C.N. 007 590 605 1996 TITLE	
	DRN	CS/MS	DATE 19-2-91	DISPLAY PCB ASSEMBLY	
	CHKD	NJA	02-07-91	DRAWING/DOC NO. 08-04666	
MATERIAL	APPD	CM	19-10-93	A2 ISS	
FINISH	TOLERANCES UNLESS OTHERWISE STATED 2 PLACES DEC. 1 PLACE DEC. 0 PLACE DEC. ANGULAR			3	4
					5
					SHT. 1 OF 2



- NOTES:  
ORDER OF ASSEMBLY MUST BE:-
- FIT ALL SURFACE MOUNT COMPONENTS.
  - FIT ALL OTHER COMPONENTS ON SIDE 1 (EXCEPT ITEM 5).
  - FIT H1-H6, D15-17. ENSURE FILAMENT IS IN THE MIDDLE OF THE SILVER AREA AND THE LEADS DO NOT OVERHANG EDGE OF PADS.
  - INSPECTION
  - FIT DISPLAY H14 AS SHOWN.
  - FIT ALL LEDS WITH SLEEVE AS SHOWN.
  - FIT ITEM 5.
  - INSPECT DISPLAY.

CHANGE REQUEST
ISSUE B C30-C36 ADDED PCB WAS ISS 2 C/R 23377 NJA 05-08-92
ISSUE 2 R33 WAS 390k. R36 WAS 10k. C/R 24093 CM 11-01-95
ISSUE 3 PCB WAS ISS 5. C/R 24227 CM 14-06-95
ISSUE 4 ITEM 5 ADDED. C/R 24515 20-02-96 JFB
ISSUE 5 C/R 24904 L1,L2,L4,L5,L7,L8 L9 TYPE CHANGE PCB WAS ISS. 7 17-6-97

PCB 07-01606-08  
ASSY P/No. 08-04666-001

FILE NAME  
08\04666\_5.DWG

	DRN	CS/MS	SCALE	© CODAN PTY LTD, A.C.N. 007 590 605 1996 TITLE <b>DISPLAY PCB ASSEMBLY</b> DRAWING/DOC NO. <b>08-04666</b>
	CHKD	NJA	DATE	
	APPD	CM	19-10-93	
MATERIAL	TOLERANCES UNLESS OTHERWISE STATED			A2 ISS 3 4 5
FINISH	2 PLACES DEC. 1 PLACE DEC. 0 PLACE DEC. ANGULAR			
				SHT. 2 OF 2