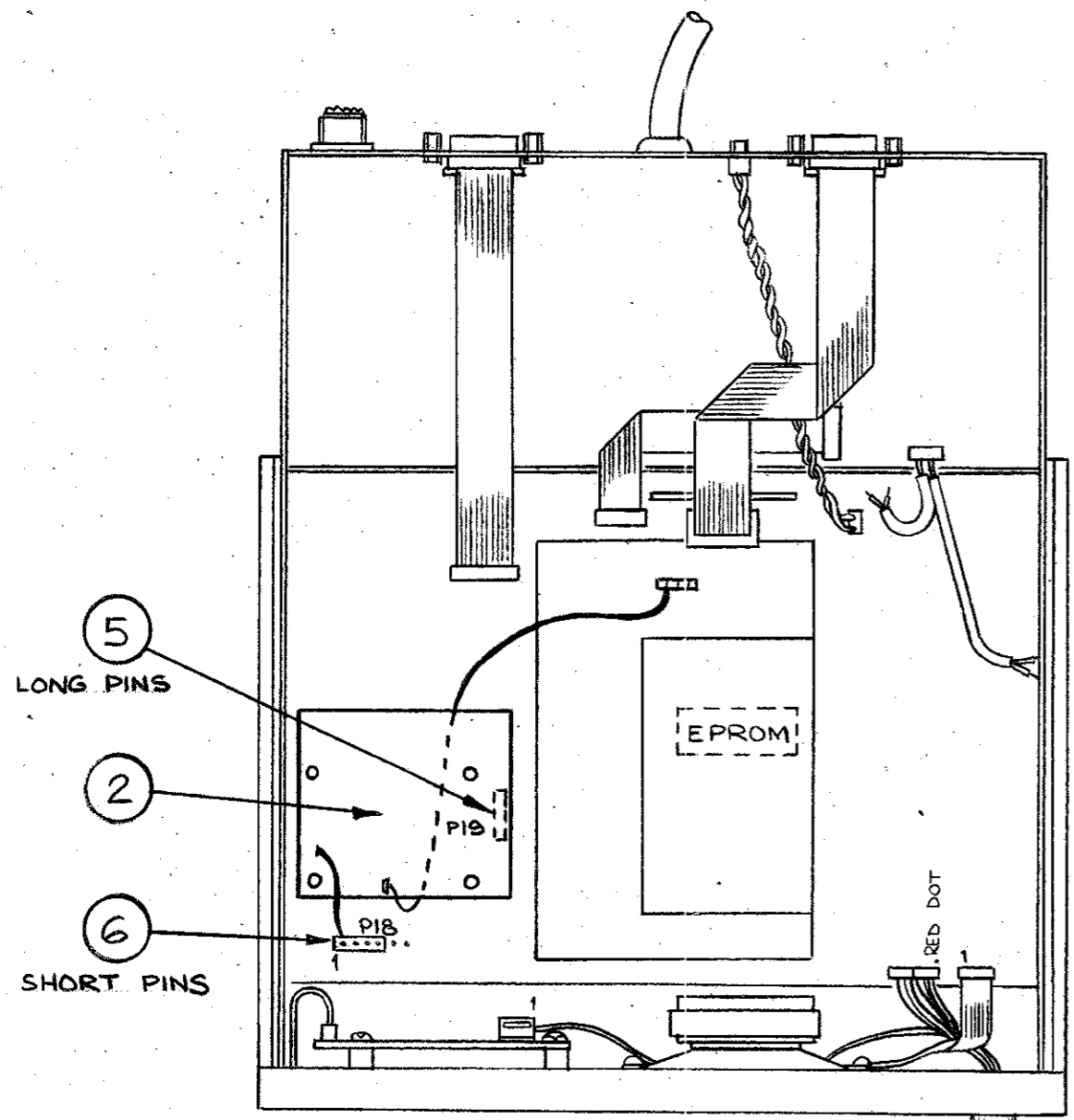


DO NOT SCALE

2. CIR. 21367
22-3-88 *9/10*

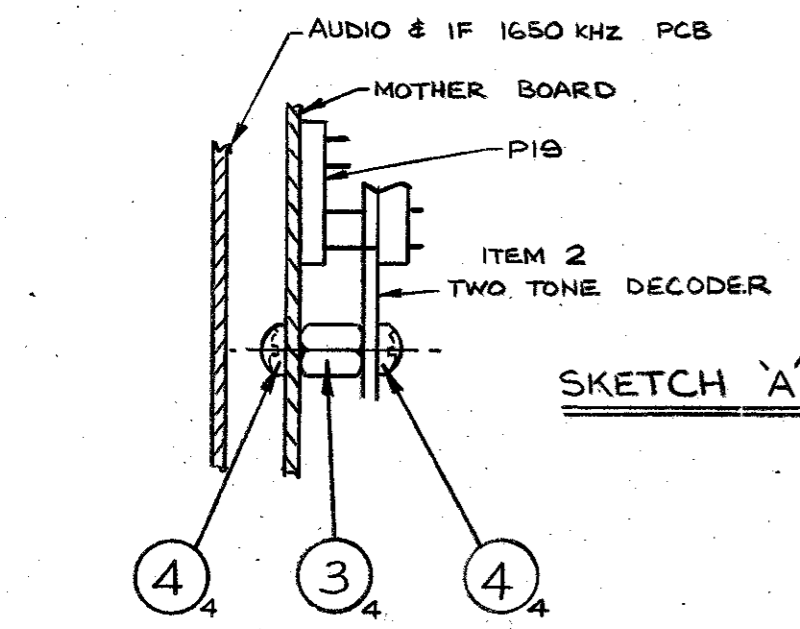
ISSUE 3
TWO UNUSED HOLES ADDED TO P18.
CIR 23793
bu 1-12-93

ITEM	PART N°	DESCRIPTION
1	15-10276-001	FITTING INSTRUCTIONS
2	08-03273	TWO TONE DECODER
3	05-03312-090	SPACER
4	31-23006-501	SCREW M3 x 6
PI9	60-00041-102	PLUG 4 WAY
PI8	60-00041-100	PLUG 4 WAY



NOTES:

1. REMOVE TOP & BOTTOM COVER.
2. DISCONNECT & REMOVE AUDIO & IF PCB (08-03025)
3. SOLDER PI8 & PI9 IN POSITION SHOWN.
4. ASSEMBLE 4 SPACERS AS SHOWN IN SKETCH 'A'
5. WITH THE PCB (ITEM 2) IN THE CORRECT ORIENTATION ALIGN WITH THE PI9 ON THE MOTHER BOARD. PUSH THE PCB (ITEM 2) DOWN UNTIL IT LOCATES ON THE SPACERS. SECURE USING THE 4 SCREWS (ITEM 4)
6. CONNECT THE TWO SOCKETS AS SHOWN ONE TO THE MOTHER BOARD, THE OTHER TO THE MICRO PROC. BOARD ENSURE CORRECT ORIENTATION OF SOCKETS.
7. REPLACE & RECONNECT THE AUDIO & IF PCB.
8. TO ENABLE TONE CALLING THE EPROM MUST BE PROGRAMMED AS REQUIRED.
9. TEST FOR CORRECT OPERATION (SEE HANDBOOK IF REQUIRED)
10. REPLACE TOP & BOTTOM COVERS.



	SCALE		TITLE		COPYRIGHT © CODAN 1987	
	DRN. APJ	DATE 5-2-87	OPTION TD			
MATERIAL	CHKD. <i>MM</i>	DATE 9-2-87	DRAWING DOC NO.			
FINISH	APPD. <i>MM</i>	DATE 10-2-87	A3		15-10276-001	
TOLERANCES UNLESS OTHERWISE STATED			ISS		SHT	
2 PLACES DEC ±			X 2 3		OF	
1 PLACE DEC ±						
ANGULAR ±						

283

400