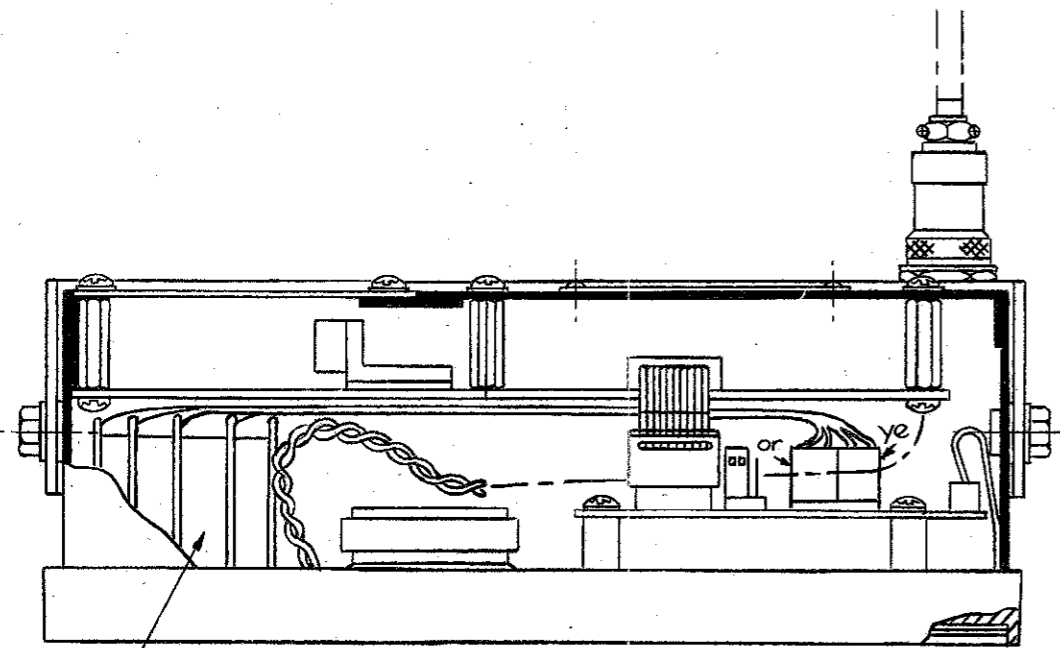
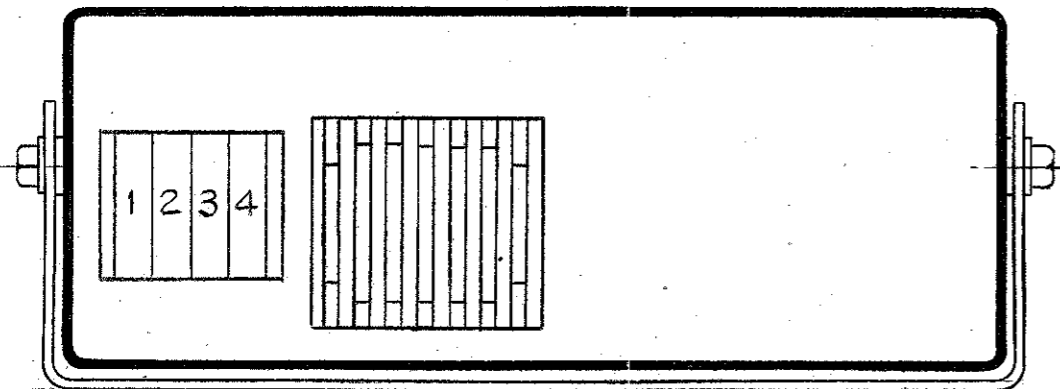


DO NOT SCALE

ITEM	PART No	DESCRIPTION
1	15-10282-001	FITTING INSTRUCTIONS
2	08-03301-004	SWITCH, MESH SELECTIVE CALL



2



FRONT VIEW

NOTES:

1. REMOVE FRONT PANEL BY UNSCREWING THE FOUR COUNTERSUNK SCREWS IN THE SIDES.
2. DISCONNECT ALL WIRING BETWEEN FRONT PANEL & MIC AMP & INTERFACE PCB.
3. USING FLAT NOSE PLIERS BREAK OUT THE FOUR SUPPORTING BARS IN THE DIGI SWITCH HOLE AREA.
4. USING A SHARP TOOL CUT OUT THE SWITCH LAYER & ESCUTCHEON 'IMPORTANT' THIS MUST BE DONE FROM THE INSIDE.
5. FROM THE FRONT FILE USING FORWARD STROKES ONLY, CLEAN THE SWITCH LAYER ESCUTCHEON & CASTING TO THE CUTOUT SIZE IN THE CASTING. 'IMPORTANT' ENSURE THIS DOES NOT EXCEED THE CAST CUTOUT SIZE.
6. PASS THE CABLE OF THE DIGI SWITCH ASSEMBLY THROUGH THE CUTOUT AND CLIP THE SIDE PLATE INTO POSITION ENSURING THE DIGI SWITCHES CAN BE READ THE CORRECT WAY ROUND. PLUG THE CABLE FROM THE DIGI SWITCHES INTO THE DISPLAY BOARD AS SHOWN. (LOOP EXCESS CABLE)
7. RECONNECT FRONT PANEL WIRING & PLUG. REPLACE FRONT PANEL USING EXISTING SCREWS.

	SCALE		TITLE		COPYRIGHT © CODAN 19	
	DRN.	A.P.J	DATE	OPTION SM 8530		
MATERIAL	CHKD.	MJM	9-2-87	DRAWING DOC NO.		
FINISH	APPD.	MJM	10-2-87	A3 15-10282-001		
TOLERANCES UNLESS OTHERWISE STATED			ISS			SHT
2 PLACES DEC ±			1			OF
1 PLACE DEC ±						
ANGULAR ±						