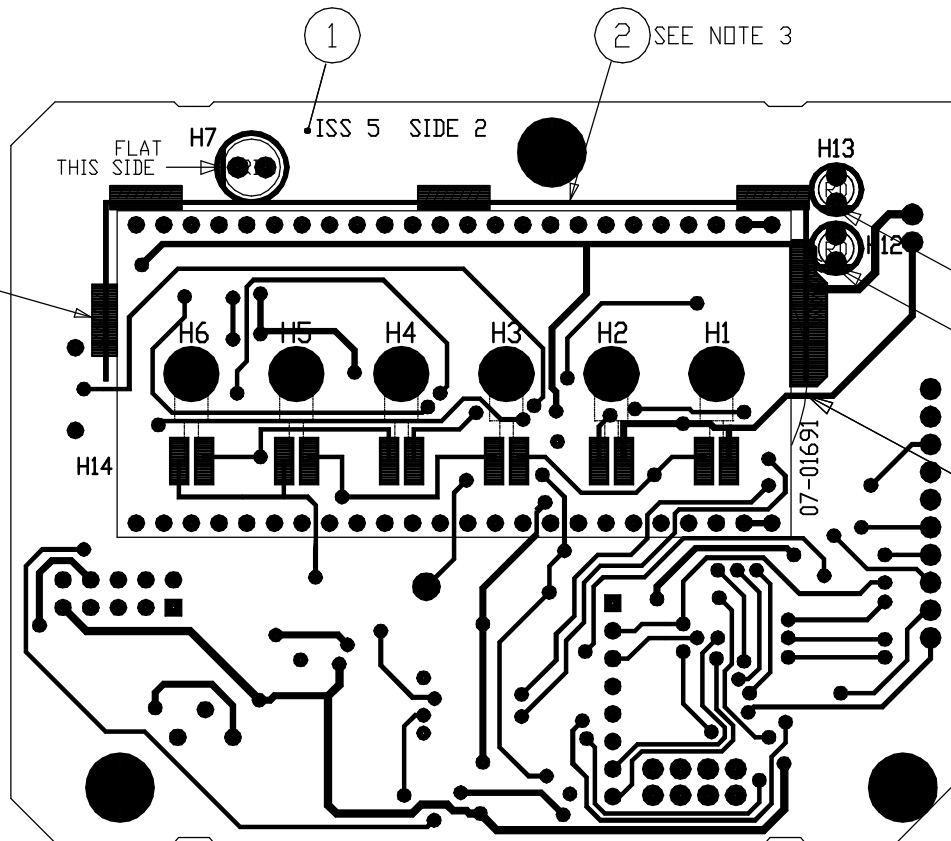


DO NOT SCALE

SOLDER TO SHIELD WHERE SHOWN.

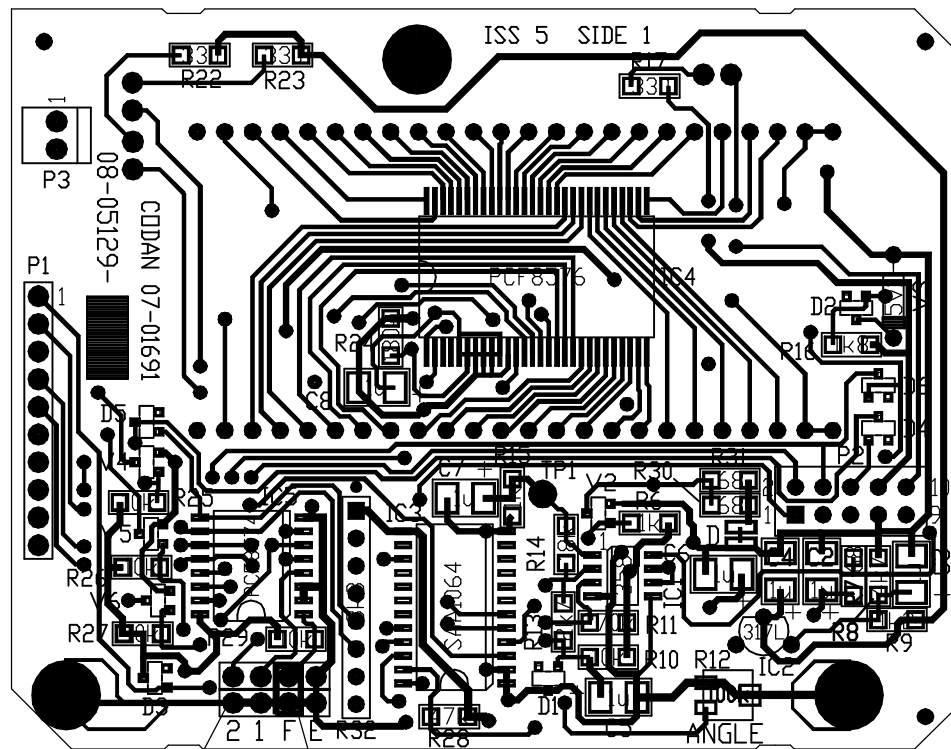
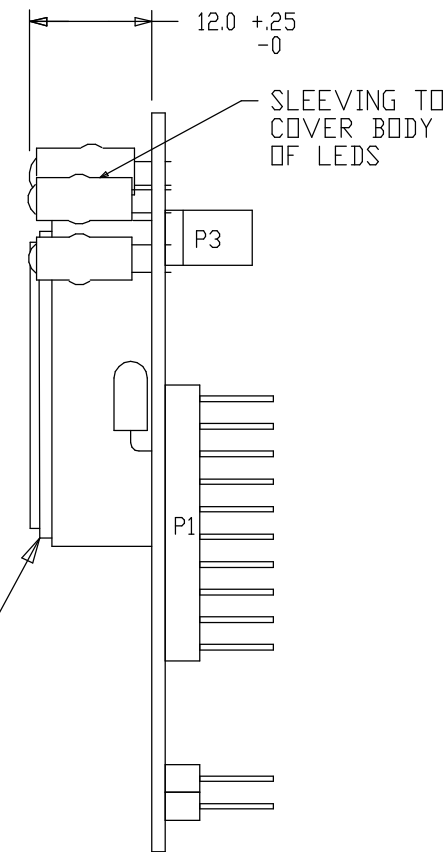


SIDE 2

FLAT THIS SIDE
FLAT THIS SIDE

FIT H14 WITH IDENT MARK THIS END. SEE NOTE 3

ENSURE DISPLAY IS PARALLEL TO PCB



SIDE 1

4 x2
5

NOTES

1. ALL DIODES ARE BAS16 (A6).
2. ALL TRANSISTORS ARE BCX20 (U2).
3. ORDER OF ASSEMBLY MUST BE:-
 - A. FIT ALL SURFACE MOUNT COMPONENTS.
 - B. FIT H1-H6. ENSURE FILAMENT IS IN THE MIDDLE OF SILVER AREA.
 - C. FIT DISPLAY (H14) AS SHOWN.
 - D. FIT SHIELD (ITEM 2) AS SHOWN, ENSURING CLEARANCE TO ALL DISPLAY PINS.
 - E. FIT ALL OTHER COMPONENTS.

PCB 07-01691 ISSUE 5
ASSEMBLY 08-05129-001

CHANGE REQUEST

ISSUE 2
R11 WAS 390k
PCB WAS ISSUE 1
C/R 24093
NJA 16-11-94

ISSUE 3
C/R 24227
PCB WAS ISSUE 2
C.M 10-7-95

ISSUE 4
R12 FOOTPRINT CHANGED.
PCB WAS ISSUE 4
C/R 24696
BCL 26-8-96

FILE No.
08\05129_4.DWG

	SCALE 2:1		© CODAN PTY LTD. A.C.N. 007 590 605: 1996	
	DRN	I.T	DATE	TITLE
MATERIAL	CHKD	NJA	8-8-94	DISPLAY BOARD LCD ASSEMBLY
FINISH	APPD	C.M	9-8-94	DRAWING/DOC NO.
	TOLERANCES UNLESS OTHERWISE STATED			A2
2 PLACES DEC. ±0.5			ISS	SHT. 1
1 PLACE DEC. ±1				
0 PLACE DEC. ±2°				
ANGULAR				OF 1

DIMENSIONS IN mm