

DO NOT SCALE

CHANGE REQUEST

ISSUE B
V1 WAS BCX20
C/R 24530
NJA 22-05-96

ISSUE C
C3 POLARITY
ADDED.
C/R 24658
BCL 08-07-96

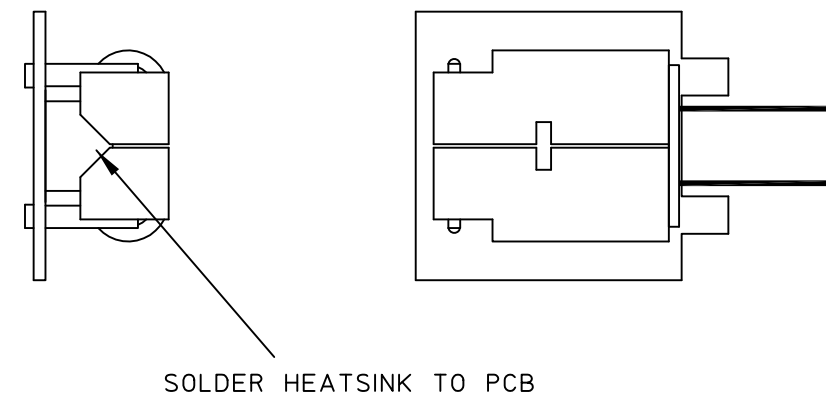
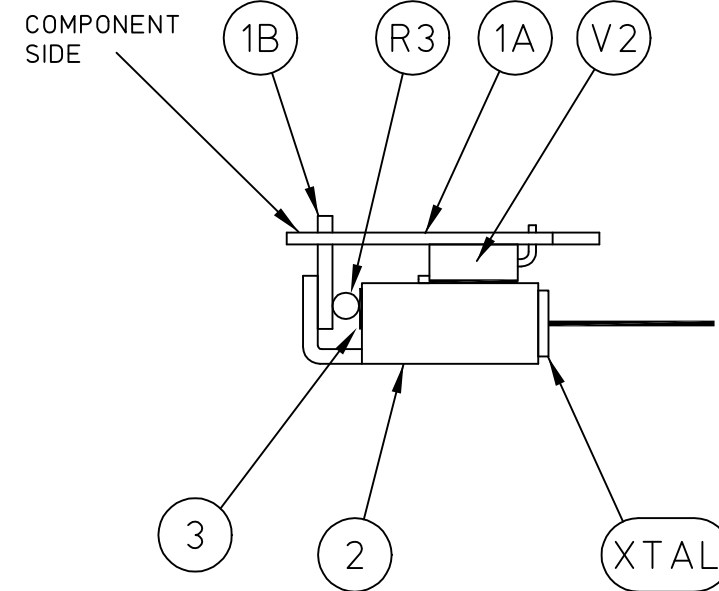
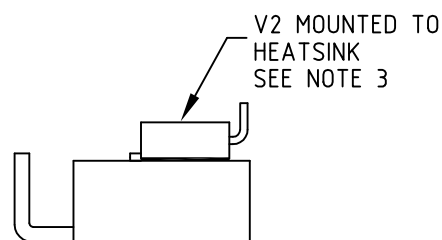
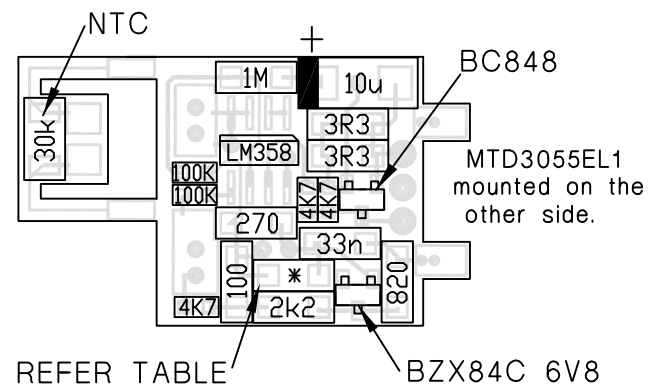
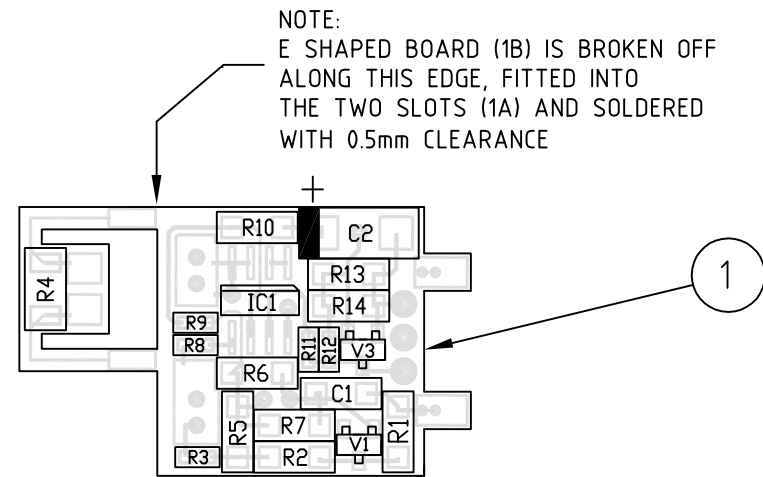
ISSUE 2
R9 WAS 270K
R1 WAS 4K7
R15, V3 ADDED.
C/R 24987
04-07-97 MJS

ISSUE 3
PCB SHORTENED,
COMPS RENUMB'RD
TABLE ADDED.
C/R 25721
09-11-98 RRU

ISSUE 4
NOTES 1-4 ADDED.
VIEW ADDED SHOWING V2
MOUNTED TO HEATSINK.
C/R 25886
13-198 PMK

ISSUE 5:
PCB WAS ISS -03
C/R 26392
GDD 21/12/99

FILE NAME
08\05235_5.DWG



NOTES:

1. E-SHAPED BOARD IS FITTED USING 75-80602.
2. V2 LEADS ARE PREFORMED USING 75-80601.
3. V2 IS MOUNTED TO HEATSINK USING 75-80600.
4. CARE MUST BE TAKEN TO AVOID EXCESS HEAT AS THIS CAN CAUSE HEATSINK TO COLLAPSE.

VERSION	R7
08-05235-001	220
08-05235-002	150

PCB 07-01732-04

		SCALE 2:1	© CODAN PTY LTD, A.C.N. 007 590 605: 1995									
	DRN	DB	DATE 09-01-96	TITLE CRYSTAL OVEN FINAL ASSEMBLY								
MATERIAL	CHKD	EF	26-02-96	DRAWING/DOC NO. 08-05235								
FINISH	APPD	JFB	30-09-96	A3	ISS					SHT. 1 OF 1		
	TOLERANCES UNLESS OTHERWISE STATED				B	C	1	2	3		4	5
	2 PLACES DEC.	±0.25	1 PLACE DEC.		±0.5	0 PLACE DEC.	±1	ANGULAR	±2			