

ISSUE CHANGE

ISSUE 8
PCB WAS ISS A.
C/R 25023
NOTE 5 ADDED.
C/R 25022
13-06-97 BCL

ISSUE 1
C138 WAS Bp2.
C160 WAS 1n.
C/R 25027
24-06-97 NJA

ISSUE 2
C/R 25100
C121 POLARITY +
WAS ON LH SIDE.
PCB WAS ISS 01
21-7-97 MJS

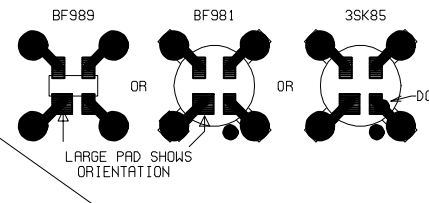
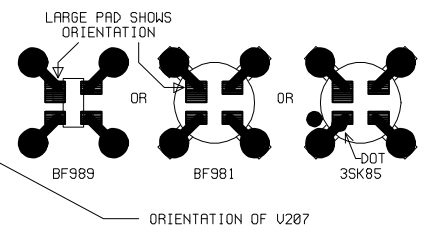
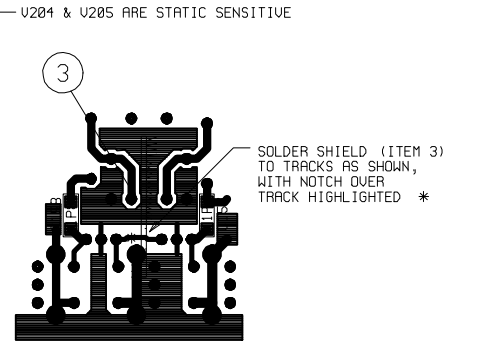
ISSUE 3
R52 WAS 10
C158 WAS 1p
R235 WAS 220
R237 WAS 390
C/R 25119
NOTE 5 ADDED.
DETAIL B ADDED.
C/R 25026
07-08-97 NGA

ISSUE 4
C127 WAS 33n.
C/R 25149
17-09-97 NGA

ISSUE 5
C/R 25167
E1 WAS 65-01000
REF TO E1 DEL D
FROM TABLE.
NOTE 7 ADDED.
30-10-97 NJA

ISSUE 6
R285 & U213
ADDED.
R235 WAS 180
R237 WAS 330
ITEM 7 WAS x12
C/R 25206
NJA 6-2-98

ISSUE 7:
ALTERNATIVE SMT
DEVICES ADDED
D20-D23 WERE
B8609A, D31 WAS
B8405B, U26, U204
& U205 WERE
BSD213.
PCB WAS ISS.-02
C/R 25951
6H 4-3-99

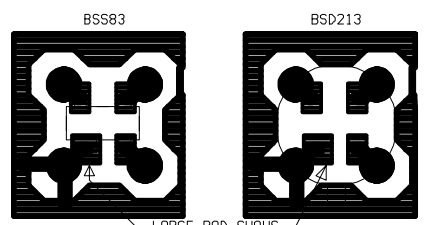


ORIENTATION OF U207

BF989 IS FITTED TO 4 HOLES.
NOTE ORIENTATION - REFER DETAIL.
LEADED VERSION OF 3SK85
IS FITTED TO 4 THRU HOLES,
MATCHING DOTS.

SMT VERSION OF 3SK85
IS SOLDERED OVER 4 THRU HOLES,
MATCHING DOTS.

BF989 IS FITTED TO SMT PADS.
NOTE ORIENTATION - REFER DETAIL.
U207 & U208 FITTED AT PREPARATION IF
LEADED ALTERNATIVE IS NOT AVAILABLE.



ORIENTATION OF U208

BSD213 IS FITTED TO 4 HOLES,
BEND EACH LEAD OUTWARDS 0.5mm TO FIT.
NOTE ORIENTATION - REFER DETAIL.
BSS83 IS FITTED TO SMT PADS.
NOTE ORIENTATION - REFER DETAIL.
U26, U204 & U205 FITTED AT PREPARATION IF
LEADED ALTERNATIVE IS NOT AVAILABLE.

Z1 & Z2
MATCHED PAIR
BLACK DOTS MUST FACE EACH OTHER
AND SEE NOTE 5.

L33 INDUCTOR TO SIT
FLUSH ON PCB SURFACE
SECURE WITH
JET MELT 3748

FIT SHIELD AT PCB TEST

C157 & C158
ARE FITTED
TO SIDE 1
(FIT AT
POST WAVE SOLDER)

MOUNTED UNDER PCB
SEE DETAIL A.

U204 & U205 ARE STATIC SENSITIVE

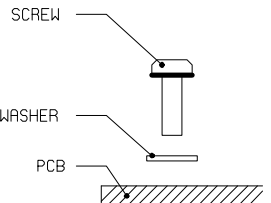
SECURE C94 AND C100
TO U8 & U9 WITH RTU
DO NOT USE
EXCESSIVE AMOUNTS

SECURE TO L32 WITH RTU

REFER NOTE 7

NOTES:-

1. THESE RESISTORS ARE 2% TOLERANCE.
2. ALL DIODES ARE BAW2 OR EQUIVALENT UNLESS OTHERWISE STATED.
3. * DENOTES - REFER TO TABLE.
4. FORM & SOLDER SHIELD IN PLACE - AFTER TEST (ITEM 2).
5. SECURE AFTER SOLDERING USING RTU SILICON.
6. PARTS ISSUED WITH METALWORK.
7. TO FIT CRYSTAL OVEN ASSEMBLY (E1):
 - A. APPLY ONE LAYER OF KAPTON TAPE TO THE TOP OF CRYSTAL (Z3). DO NOT COVER SIDES.
 - B. APPLY THERMA FLOW COMPOUND TO THE TEMPERATURE SENSOR (R3) AND TOP AND SIDES OF CRYSTAL, THEN SLIDE INTO OVEN ASSY (E1). ENSURE CRYSTAL IS NOT LOOSE IN THE METAL CLIP AND TOP OF CRYSTAL IS TOUCHING TEMPERATURE SENSOR.
 - C. FIT THE OVEN & CRYSTAL ASSY ON TO PCB AND SOLDER.



| ASSEMBLY | C249 & C250 | ITEM 4 | LINK WF | R213 | R214 | Z3 | Z201 | Z202 | C54 | D206 | IC210 | R273 & R276 |
|--------------|-------------|------------|---------|------|------------|------------------------|------------------------|---------------------------|------------|------------|------------|-------------|
| 08-05322-001 | NOT FITTED | NOT FITTED | OPEN | 1R | NOT FITTED | 730kHz 65-90078-000 | 181kHz 65-90080-000 | 2.5kHz BW 65-91116-000 | NOT FITTED | NOT FITTED | NOT FITTED | NOT FITTED |
| 08-05322-002 | 27p | FITTED | CLOSED | 1k8 | 4k3 | 730kHz 65-90080 | 181kHz 65-90089 | 3.0kHz BW 65-91120 | NOT FITTED | NOT FITTED | NOT FITTED | NOT FITTED |

PCB 07-01768-03

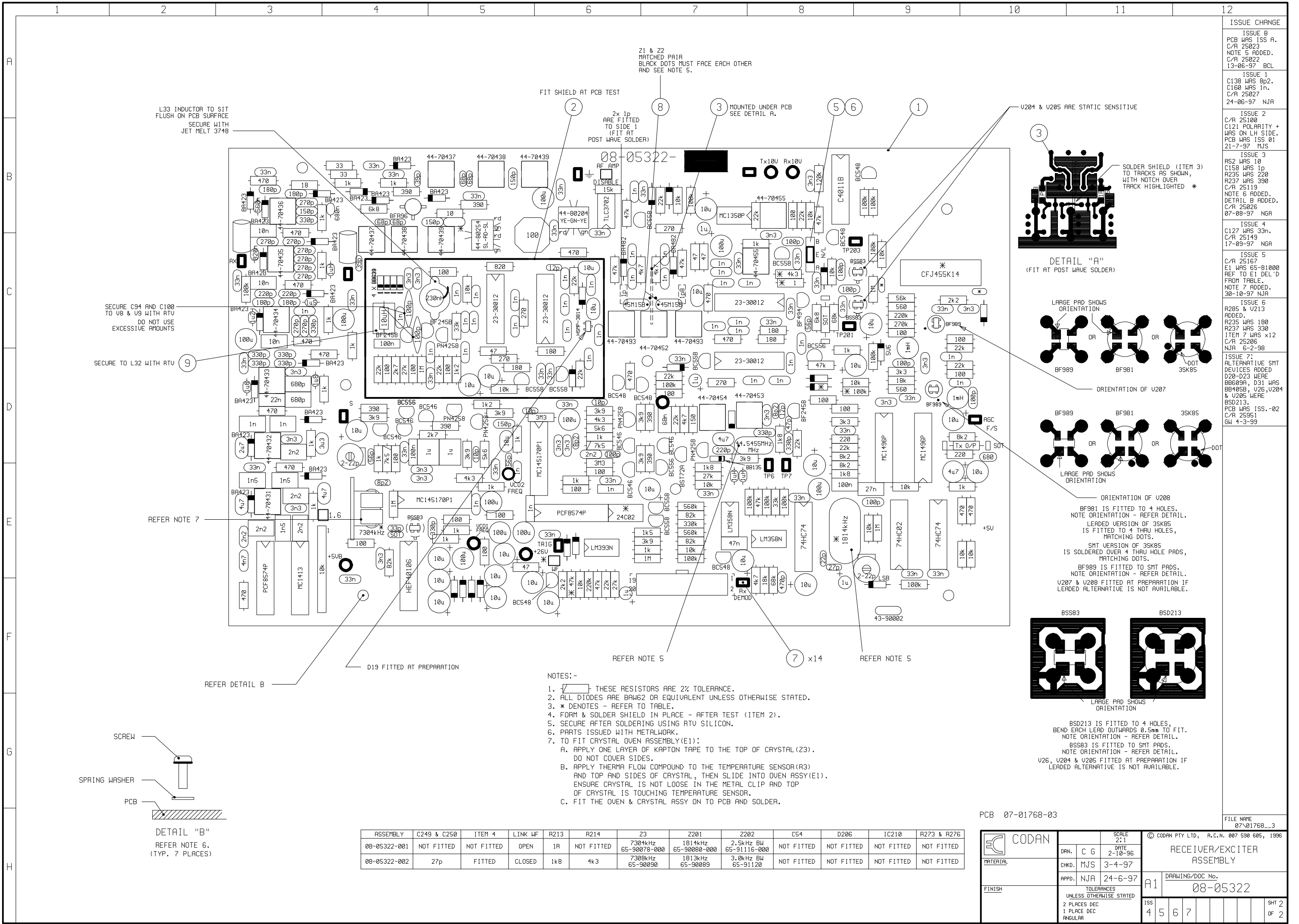
SCALE 2:1
DATE 2-10-96
DRA. C G
CHKD. MJS 3-4-97
APPD. NJA 24-6-97

© CODAN PTY LTD, A.C.N. 007 590 605, 1996
RECEIVER/EXCITER ASSEMBLY
DRAWING/DOC No. 08-05322

FINISH TOLERANCES UNLESS OTHERWISE STATED
2 PLACES DEC
1 PLACE DEC
ANGULAR

ISS 4 5 6 7

SHT 1 OF 2



ISSUE CHANGE

ISSUE 8
PCB WAS 135 A.
C/R 25023
NOTE 5 ADDED.
C/R 25022
13-06-97 BCL

ISSUE 1
C138 WAS 8p2.
C160 WAS 1n.
C/R 25027
24-06-97 NJA

ISSUE 2
C/R 25100
C121 POLARITY +
WAS ON LH SIDE.
PCB WAS ISS 01
21-7-97 MJS

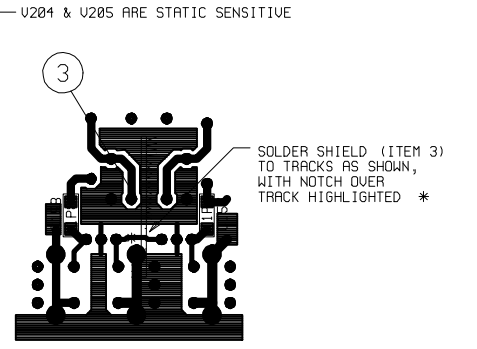
ISSUE 3
R52 WAS 10
C158 WAS 1p
R235 WAS 220
R237 WAS 390
C/R 25119
NOTE 5 ADDED.
DETAIL B ADDED.
C/R 25026
07-08-97 NGA

ISSUE 4
C127 WAS 33n.
C/R 25149
17-09-97 NGA

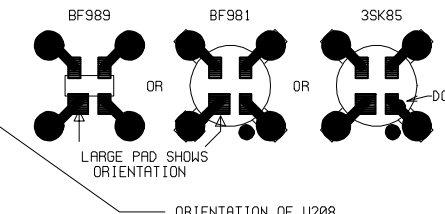
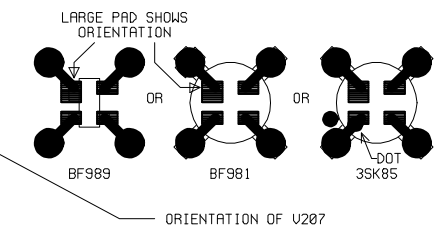
ISSUE 5
C/R 25167
E1 WAS 65-01000
REF TO E1 DEL D
FROM TABLE.
NOTE 7 ADDED.
30-10-97 NJA

ISSUE 6
R285 & U213
ADDED.
R235 WAS 180
R237 WAS 330
ITEM 7 WAS x12
C/R 25206
NJA 6-2-98

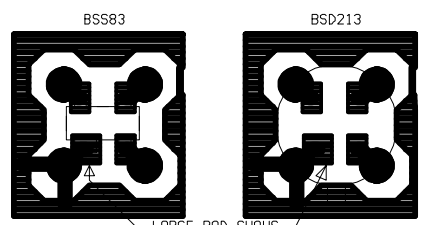
ISSUE 7:
ALTERNATIVE SMT
DEVICES ADDED
D20-D23 WERE
B8609A, D31 WAS
B8405B, U26, U204
& U205 WERE
BSD213.
PCB WAS ISS.-02
C/R 25951
6H 4-3-99



DETAIL "A"
(FIT AT POST WAVE SOLDER)



BF981 IS FITTED TO 4 HOLES.
NOTE ORIENTATION - REFER DETAIL.
LEADED VERSION OF 3SK85
IS FITTED TO 4 THRU HOLES,
MATCHING DOTS.
SMT VERSION OF 3SK85
IS SOLDERED OVER 4 THRU HOLES PADS,
MATCHING DOTS.
BF989 IS FITTED TO SMT PADS.
NOTE ORIENTATION - REFER DETAIL.
U207 & U208 FITTED AT PREPARATION IF
LEADED ALTERNATIVE IS NOT AVAILABLE.



BSD213 IS FITTED TO 4 HOLES,
BEND EACH LEAD OUTWARDS 0.5mm TO FIT.
NOTE ORIENTATION - REFER DETAIL.
BSS83 IS FITTED TO SMT PADS.
NOTE ORIENTATION - REFER DETAIL.
U26, U204 & U205 FITTED AT PREPARATION IF
LEADED ALTERNATIVE IS NOT AVAILABLE.

Z1 & Z2
MATCHED PAIR
BLACK DOTS MUST FACE EACH OTHER
AND SEE NOTE 5.

FIT SHIELD AT PCB TEST

2x 1p
ARE FITTED
TO SIDE 1
(FIT AT
POST WAVE SOLDER)

MOUNTED UNDER PCB
SEE DETAIL A.

L33 INDUCTOR TO SIT
FLUSH ON PCB SURFACE
SECURE WITH
JET MELT 3748

SECURE C94 AND C100
TO U8 & U9 WITH RTU
DO NOT USE
EXCESSIVE AMOUNTS

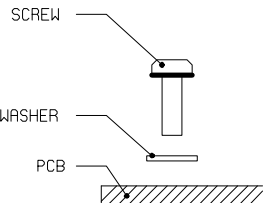
SECURE TO L32 WITH RTU

REFER NOTE 7

D19 FITTED AT PREPARATION

NOTES:-

1. THESE RESISTORS ARE 2% TOLERANCE.
2. ALL DIODES ARE BAW2 OR EQUIVALENT UNLESS OTHERWISE STATED.
3. * DENOTES - REFER TO TABLE.
4. FORM & SOLDER SHIELD IN PLACE - AFTER TEST (ITEM 2).
5. SECURE AFTER SOLDERING USING RTU SILICON.
6. PARTS ISSUED WITH METALWORK.
7. TO FIT CRYSTAL OVEN ASSEMBLY (E1):
 - A. APPLY ONE LAYER OF KAPTON TAPE TO THE TOP OF CRYSTAL (Z3).
DO NOT COVER SIDES.
 - B. APPLY THERMA FLOW COMPOUND TO THE TEMPERATURE SENSOR (R3)
AND TOP AND SIDES OF CRYSTAL, THEN SLIDE INTO OVEN ASSY (E1).
ENSURE CRYSTAL IS NOT LOOSE IN THE METAL CLIP AND TOP
OF CRYSTAL IS TOUCHING TEMPERATURE SENSOR.
 - C. FIT THE OVEN & CRYSTAL ASSY ON TO PCB AND SOLDER.



DETAIL "B"
REFER NOTE 6.
(TYP. 7 PLACES)

| ASSEMBLY | C249 & C250 | ITEM 4 | LINK WF | R213 | R214 | Z3 | Z201 | Z202 | C54 | D206 | IC210 | R273 & R276 |
|--------------|-------------|------------|---------|------|------------|-------------------------|-------------------------|---------------------------|------------|------------|------------|-------------|
| 08-05322-001 | NOT FITTED | NOT FITTED | OPEN | 1R | NOT FITTED | 7304kHz 65-90078-000 | 1814kHz 65-90080-000 | 2.5kHz BW 65-91116-000 | NOT FITTED | NOT FITTED | NOT FITTED | NOT FITTED |
| 08-05322-002 | 27p | FITTED | CLOSED | 1k8 | 4k3 | 7308kHz 65-90089 | 1813kHz 65-90089 | 3.0kHz BW 65-91120 | NOT FITTED | NOT FITTED | NOT FITTED | NOT FITTED |

PCB 07-01768-03

CODAN

SCALE 2:1

DATE 2-10-96

DRN. C G

CHKD. MJS

APPD. NJA

24-6-97

TOLERANCES UNLESS OTHERWISE STATED

2 PLACES DEC

1 PLACE DEC

ANGULAR

ISS 4

5 6 7

8

9

10

11

12

FILE NAME 07-01768_3

RECEIVER/EXCITER ASSEMBLY

DRAWING/DOC No. 08-05322

SHT 2 OF 2