

ELGAR

400SR

SIGNAL ROUTING PLUG-IN

Instruction Manual

ELGAR ELECTRONICS CORPORATION

9250 Brown Deer Road
San Diego, CA 92121-2294
1-800-733-5427
Tel: (858) 450-0085
Fax: (858) 458-0267
Email: sales@elgar.com
www.elgar.com

©1999 by Elgar Electronics Corporation

This document contains information proprietary to Elgar Electronics Corporation. The information contained herein is not to be duplicated or transferred in any manner without prior written permission from Elgar Electronics Corporation.

Document No. 604-241-90

ELGAR TWO-YEAR WARRANTY

Elgar Electronics Corporation (hereinafter referred to as Elgar) warrants its products to be free from defects in material and workmanship. This warranty is effective for two years from the date of shipment of the product to the original purchaser. Liability of Elgar under this warranty shall exist provided that:

- the Buyer exposes the product to normal use and service and provides normal maintenance on the product;
- Elgar is promptly notified of defects by the Buyer and that notification occurs within the warranty period;
- the Buyer receives a Return Material Authorization (RMA) number from Elgar's Repair Department prior to the return of the product to Elgar for repair, phone 800-73-ELGAR (800-733-5427), ext. 2295;
- the Buyer returns the defective product in the original, or equivalent, shipping container;
- if, upon examination of such product by Elgar it is disclosed that, in fact, a defect in materials and/or workmanship does exist, that the defect in the product was not caused by improper conditions, misuse, or negligence; and,
- that Elgar QA seal and nameplates have not been altered or removed and the equipment has not been repaired or modified by anyone other than Elgar authorized personnel.

This warranty is exclusive and in lieu of all other warranties, expressed or implied, including, but not limited to, implied warranties of merchantability and fitness of the product to a particular purpose. Elgar, its agents, or representatives shall in no circumstance be liable for any direct, indirect, special, penal, or consequential loss or damage of any nature resulting from the malfunction of the product. Remedies under this warranty are expressly limited to repair or replacement of the product.

CONDITIONS OF WARRANTY

- To return a defective product, contact an Elgar representative or the Elgar factory for an RMA number. Unauthorized returns will not be accepted and will be returned at the shipper's expense.
- For Elgar products found to be defective within thirty days of receipt by the original purchaser, Elgar will absorb all ground freight charges for the repair. Products found defective within the warranty period, but beyond the initial thirty-day period, should be returned prepaid to Elgar for repair. Elgar will repair the unit and return it by ground freight pre-paid.
- Normal warranty service is performed at Elgar during the weekday hours of 7:30 am to 4:30 pm Pacific time. Warranty repair work requested to be accomplished outside of normal working hours will be subject to Elgar non-warranty service rates.
- Warranty field service is available on an emergency basis. Travel expenses (travel time, per diem expense, and related air fare) are the responsibility of the Buyer. A Buyer purchase order is required by Elgar prior to scheduling.
- A returned product found, upon inspection by Elgar, to be in specification is subject to an inspection fee and applicable freight charges.
- Equipment purchased in the United States carries only a United States warranty for which repair must be accomplished at the Elgar factory.

ELGAR

Committed to Quality...Striving for Excellence

400SR SIGNAL ROUTING PLUG-IN

The 400SR Plug-In is a universal signal routing plug-in used in multiphase systems to route drive signals from a master plug-in oscillator or an external oscillator source. The routing is accomplished by the closing of specific switches on the 8 pole single throw dip switch. Standard plug-ins are as follows:

- | | |
|--------------|--|
| Model 400A | External oscillator adoptor. Has front panel phone jack and routes signal to power amplifier input. Dip switch not necessary. If present, switches 7 & 8 must be on, connecting pins 14 to 21 and 16 to 12. |
| Model 400B | Blank plug-in used in 2nd amplifier (B phase) of multi-amplifier system. Routes appropriate signal from oscillator in 1st amplifier (A phase) to 2nd amplifier input. Switches 6, 7 & 8 must be on, connecting pins 22 to 11, 21 to 14 and 16 to 12. |
| Model 400C | Blank plug-in used in 3rd amplifier (C phase) of 3 amplifier, 3 phase system. Routes appropriate signal from oscillator in 1st amplifier to 3rd amplifier input. Switches 5, 7 & 8 must be on, connecting pins 22 to 10, 21 to 14 and 16 to 12. |
| Model 400BT | Blank plug-in used in 2nd amplifier(s) in a tandem system such as 2000-1. Also used in single phase TB704A systems or in phase A of multiphase TG704A-3 systems. Switches 4, 7 & 8 must be on, connecting pins 22 to 9, 21 to 14 and 16 to 12. |
| Model 400DPA | Blank plug-in used in single phase DAP systems or in phase A of multiphase DAP systems. Switches 4 & 8 must be on, connecting pins 14 to 9 and 16 to 12. |
| Model 400DPB | Blank plug-in used in phase B of multiphase DAP systems. Swotches 1 & 8 must be on, connecting pins 14 to 11 and 16 to 12. |
| Model 400DPC | Blank plug-in used in phase C of multiphase DAP systems. Switches 2 & 8 must be on, connecting pins 14 to 10 and 16 to 12. |
| Model 400TG3 | Plug-in used in single package 3 phase units such as 1753B. When used with TG704A-3 it has front panel B and C phase amplitude potentiometers. Switches 4, 7 & 8 must be on, connecting pins 22 to 9, 21 to 14 and 16 to 12. |

The 400 SR plug-in is a universal signal routing plug-in used in multi-phase systems to route drive signal from a master plug-in oscillator or an external oscillator source. The routing is accomplished by the closing of specific switches on the 8 pole single throw DIP Switch. Standard plug-ins are as follows. (for special configurations refer to the addendum):

Model 400-A External oscillator adaptor. Has front panel phone jack and routes signal to power amplifier input. DIP Switch not necessary. If present switches 7 & 8 must be ON connecting pins 14 to 21 and 16 to 12

400-B Blank plug-in used in 2nd amplifier (B phase) of multi-phase system. Routes appropriate signal from oscillator in 1st amplifier in-put switches 6 7 8 must be ON, connecting pins 22 to 11, 21 to 14, 16 to 12

400-C Blank plug-in used in 3rd amplifier (C phase) of 3 amplifier, 3 phase system. Routes appropriate signal from oscillator in 1st amplifier to 3rd amplifier input. Switches 5 7 8 must be ON, connecting pins 22-10, 21-14, 16 to 12

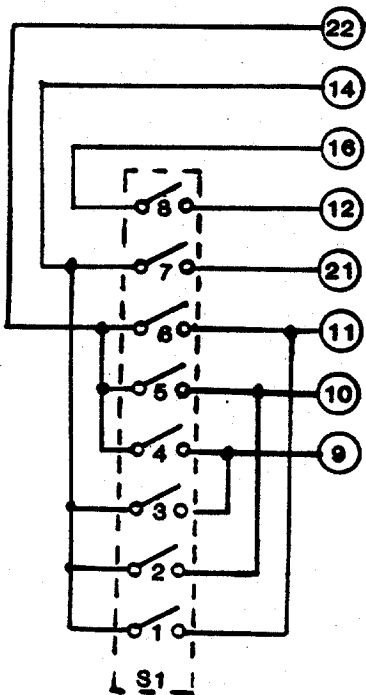
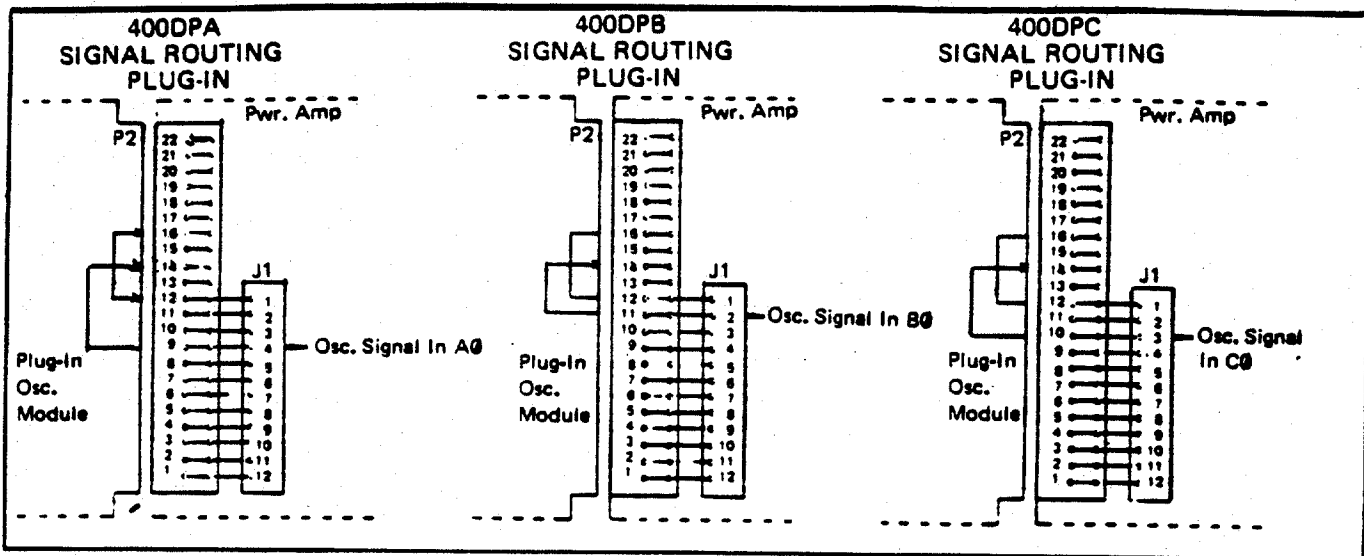
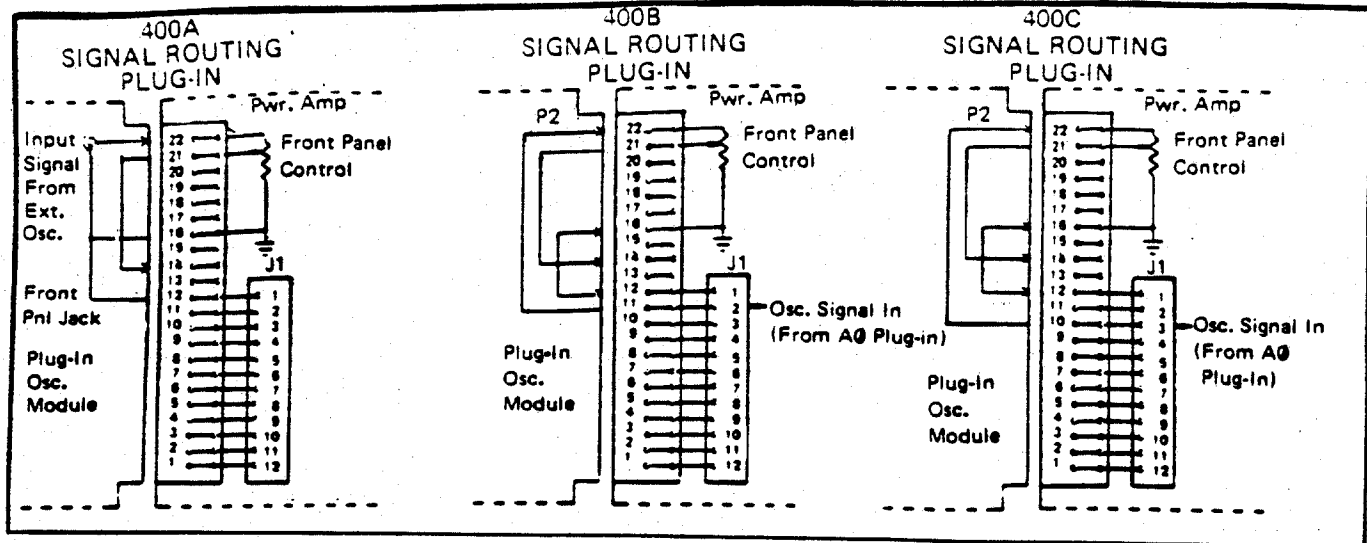
400 BT Blank plug-in used in 2nd amplifier(s) in a Tandem System such as 2000-1. Also used in single phase TG 704A systems or in phase A of multi-phase TG 704A-3 systems. Switches 4 7 8 must be ON connecting pins 22 to 9, 21 to 14 and 16 to 12

400-DPA Blank plug-in used in single phase DAP systems or in phase A of multi-phase DAP systems. Switch 3 8 must be ON connecting pins 14 to 9 and 16 to 12

400-DPB Blank plug-in used in phase B of multi-phase DAP systems. Switches 1 8 must be ON connecting pins 14 to 11 and 16 to 12

400-DPC Blank plug-in used in phase C of multi-phase DAP systems. Switches 2 8 must be ON connecting pins 14 to 10 and 16 to 12

400-TG3 Plug in used in single package 30 units such as 1753B when used with TG 704A-3. It has front panel B and C phase amplitude pots. Switches 4 7 8 must be ON connecting pins 22 to 9, 21 to 14 and 16 to 12



MODEL 400SR CONTAINS AN 8 POLE SWITCH, S1, WHICH IS USED TO SELECT 1 OF 7 CONFIGURATIONS.

REFER TO SECTION III FOR ADDITIONAL INFORMATION.

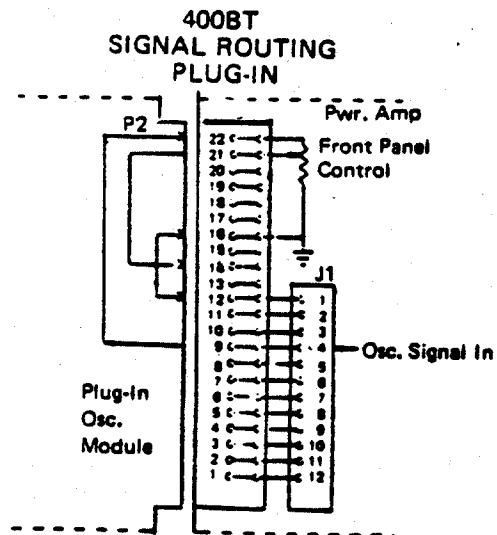


Figure 1. Signal Routing Plug-In Connections