



SunSet €20[™]
User's Manual
for
Remote Control

SS266-9

Version 1.02

Sunrise Telecom... A Step Ahead

MAN-11100- 009 Rev. A

SSE20 Using Remote Control in Windows 98

The SunSet €20 Remote Control program (option SW 600 WIN) makes it easy to use the complete functionality of the SunSet €20 from a remote location, controlled with ease from your own desk (or wherever your laptop may be), using Windows 95, 98, or NT 4.0. Use a direct connection, or connect via a modem.

Install the SS €20 Remote Control software

- a) Place the CD-ROM into the computer's CD-ROM drive.
- b) The program should start automatically. If it doesn't:
- c) Go to MY COMPUTER and double click on the CD-ROM icon.

OR

- a) Download the software from our web site to your hard drive.
- b) Unzip the file.
- c) Double click on Install.

- d) Follow the instructions.

Make sure your SunSet €20 is connected to your computer.

You will need the following:

- 1) Serial port—DB9 cable to connect to your computer.
- 2) SS122B null modem adapter to put between the computer cable and the remote control cable.
- 3) SS115D DIN8—DB9 cable to connect to your unit (the other end goes to the SS122B).

The next two figures show the two ways to connect, directly (for demonstration or other purposes) and remotely (to use the €20 at a remote site).

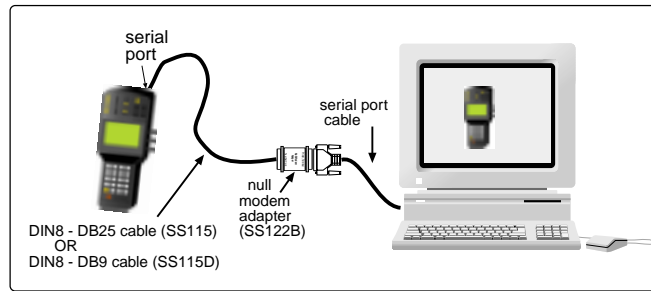


Figure 1 Remote Control, Direct Connection

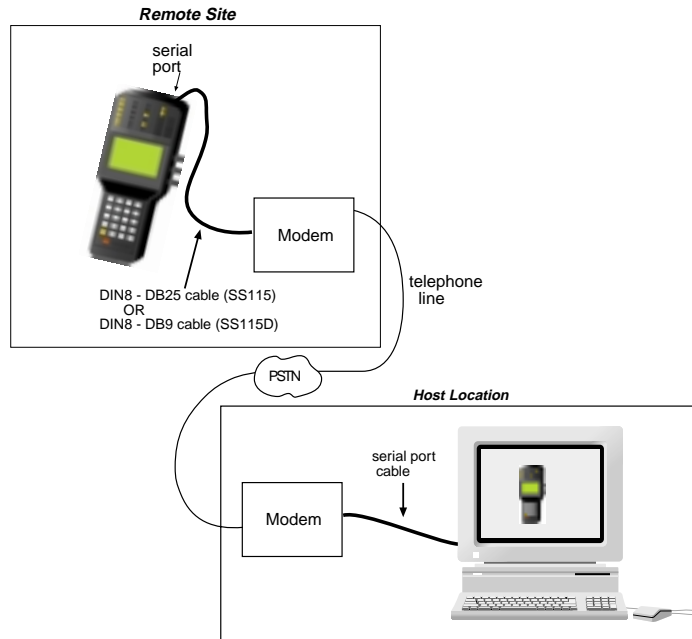


Figure 2 Remote Control, Remote Site

Important Note:

If you start the Remote Control program and power it up before connecting a SunSet €20, the program will lock up. You will need to shut it down then restart it before running a remote control session. It is also best to start Remote Control before powering up the unit, if possible.

Running Remote Control

1. Click on START.
 - a) Cursor to PROGRAMS.
 - b) Select E20 Remote Control/ E20 Remote Control.

After a few moments, a full-size graphic of the SunSet €20 will appear on your screen, as shown in Figure 3.



Figure 3 SSE20 Remote Control Graphic

Press the POWER button on the graphical unit (use your mouse). A menu will appear, as shown in the bottom right of Figure 3.

Here are the menu choices:

Login: Press to start a remote control session.

Logoff: Press to end a remote control session.

Serial Port properties: Press to access a screen which allows you to configure the serial port, as illustrated in the next figure:

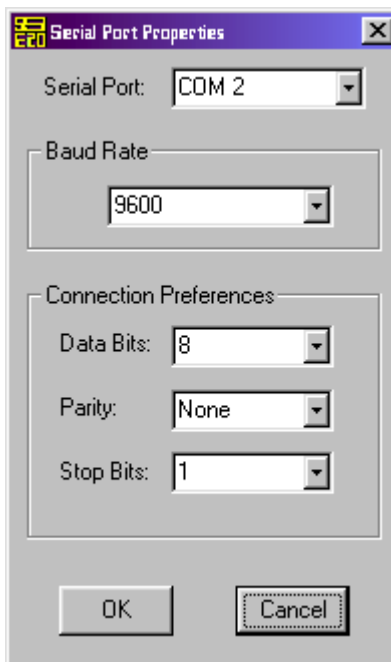


Figure 4 Serial Port Properties

Highlight each option as desired. Your choice will then appear in the window.

Serial Port

Options: COM1—COM6

Determine which of your computer's communication ports will be used to connect to the SunSet.

Baud Rate

Options: 1200, 2400, 4800, 9600, 14400, 19200, 38400

Determine the number of shortest signalling elements per second on a transmission medium. Note that a rate of 9600 or higher is preferred.

Connection Preferences

Data Bits

Options: 4–8

Determine the number of bits per character.

Parity

Options: Even, None, Odd

Determine the parity of the accuracy check bits.

Stop Bits

Options: 1, 2

Determine if the stop bit will be one or two characters.

To Start a Remote Control Session:

Use the mouse to cursor to LOGIN, and right click. The LCD screen on the graphical unit will come to life, displaying the MAIN MENU.

Other options available, once you are logged in, are MINIMIZE, which makes the remote control window vanish, though it remains alive on the screen tool bar; ABOUT, which brings up the program description; EXIT, which both logs you out of the remote control session and terminates the program; and LOGOFF, which ends the current remote control session, but leaves the program open.

Use the arrow **cursor** keys on the graphical unit, or the arrow keys on your computer keyboard, to move through the menus. You may perform operations as usual.

To press the **F-keys**, use the mouse to point and click on the graphical unit, or use the computer keyboard's F1-F4 keys (usually in the top row on the keyboard).

To **ESCape**, press the graphical unit's ESCape key with a right click of the mouse, or press the computer keyboard's Esc(ape) key. **ENTER** works the same way; press the graphical unit's ENTER key with a mouse click, or use the computer keyboard's Enter key.

The **GRAPHic** screen is available.

Here is a sample figure, showing a Measurement Results screen.



Figure 3 Active Remote Control; Results Screen

To End a Remote Control Session

When you are through with remote control, press the graphical unit's POWER key, and select LOGOFF.

